

FOR SALE

CLAY TWP • CASS COUNTY

70^{+/-} ACRES

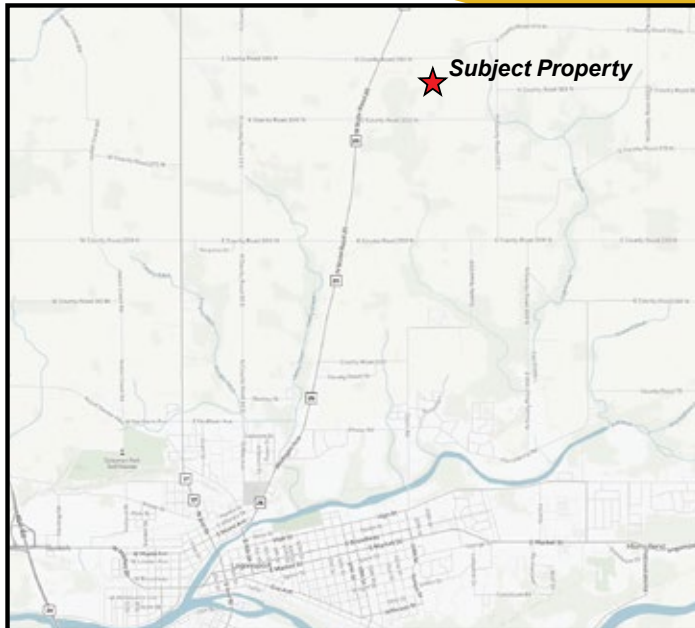
3 Tracts

Rural Home, Farmland, Recreation & Hunting



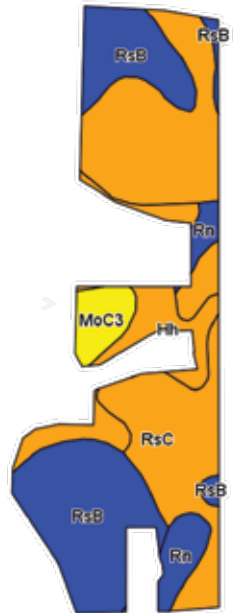
3^{+/-} Acre Homesite

3401 E 325 N • Logansport, IN 46947



Soils Information

Code	Soil Description <small>Field borders provided by Farm Service Agency as of 5/21/2008. Soils data provided by USDA and NRCS.</small>	Acres	Corn	Soybeans
R sC	Riddles silt loam, 6 to 12 percent slopes	15.70	135	47
R sB	Riddles silt loam, 2 to 6 percent slopes	11.57	140	49
Hh	Houghton muck, drained	3.89	150	40
R n	Rensselaer loam, till substratum	2.03	175	49
MoC3	Miami clay loam, 6 to 14 percent slopes, severely eroded	1.65	125	44
Weighted Average		140.2	46.9	



32^{+/-} Tillable • 34^{+/-} Woods & Recreational

Larry Jordan
765-473-5849
lj@halderman.com

AJ Jordan
317-697-3086
ajj@halderman.com

HALDERMAN
REAL ESTATE
SERVICES
HLS# LWJ-11734 (16)



800.424.2324 | www.halderman.com

Larry Jordan
765-473-5849
lj@halderman.com

AJ Jordan
317-697-3086
ajj@halderman.com

HALDERMAN
REAL ESTATE
SERVICES
HLS# LWJ-11734 (16)
800.424.2324 | www.halderman.com



FOR SALE

CLAY TWP • CASS COUNTY

*Rural Home, Farmland,
Recreation & Hunting*

70^{+/-} ACRES
3 Tracts



Property Information

Location: 3 miles NE of Logansport, IN

Zoning: Agricultural

Topography: Level - Gently Rolling

School District: Logansport Community
School Corporation

Annual Taxes: \$1,494.88

Tract Information:

Tract 1: 38.69^{+/-} Acres, 32^{+/-} Tillable

Tract 2: 28.4^{+/-} Acres Woods,
Hunting & Recreational

Tract 3: 3^{+/-} Acre Homesite



*Single story frame home with 2 bedrooms,
1 bath and an attached garage*