



LA - Claiborne Vaughan Estate
348 acres +/-
362.49 Acres
\$600,000

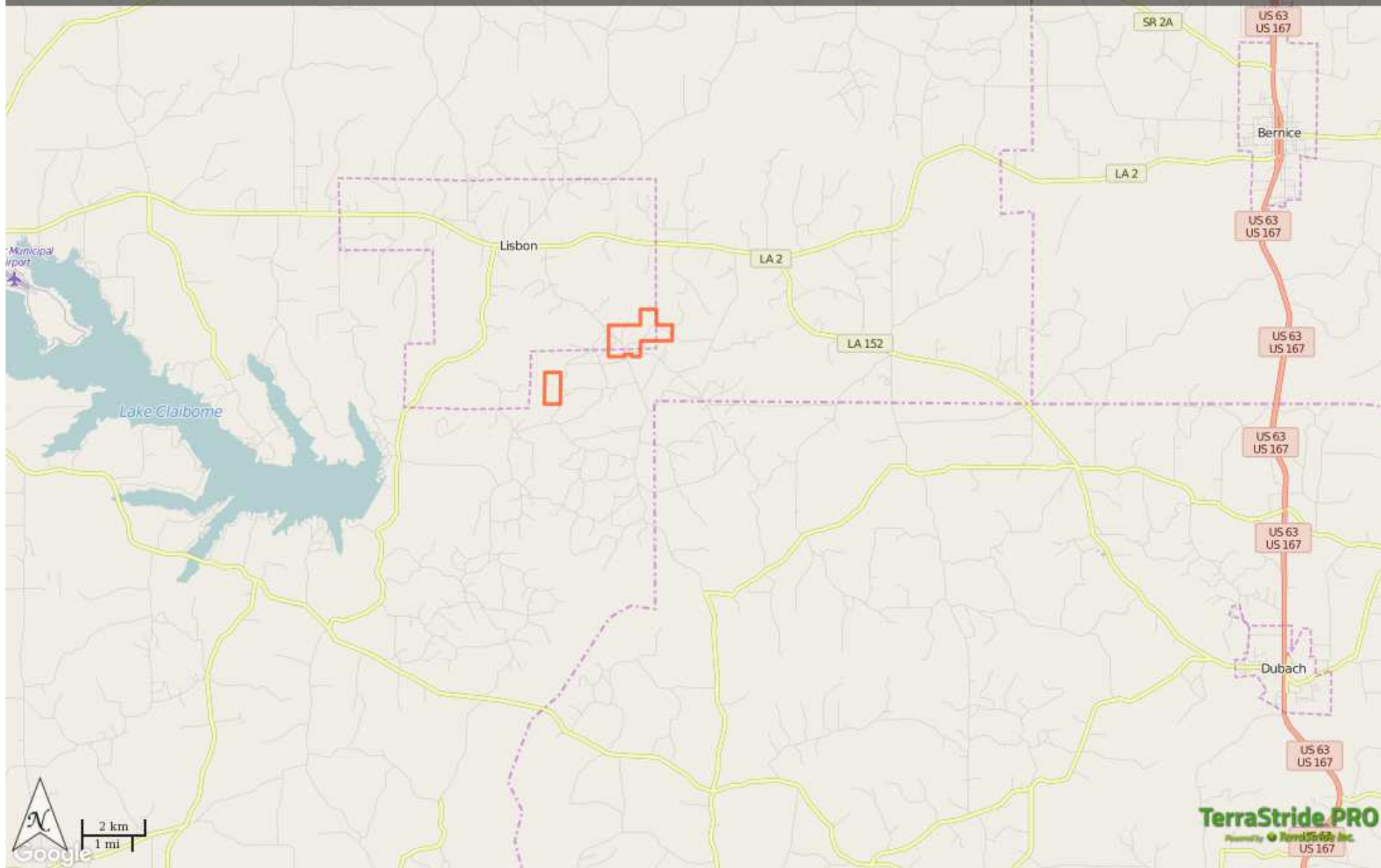
Brown Realty Co

Brad Brown

(318) 680-7809

bbrown@brownrealtyco.com

<http://www.brownrealtyco.com/>



Property Report—LA - Claiborne Vaughan Estate 348 acres +/-

Legend

Feature	Icon	Colors
Boundary		

Description

This is a young planted pine tract located off of Pattontown road south of Lisbon. This tract will offer income in the future from pine timber. The timber ages range from 4 years old to 24 years old. This tract has about 1/2 mile frontage on Pattontown Road and 1/4 mile of frontage on Tenneco Road. Along with the pine timber income you can enjoy being able to hunt deer and turkey. This tract is priced to sell. Brown Realty Co Jerry Brown, Broker 2189 Hwy 425 Rayville LA 71269 318-728-9544

DISCLAIMER: The information contained herein is as obtained by this broker from sellers, owners, or other sources. This information is considered reliable, neither this broker nor owners make any guarantee, warranty or representation as to correctness of any data or descriptions and the accuracy of such statements. The correctness and / or accuracy of any and all statements should be determined through independent investigation made by the prospective purchaser. Any offer for sale is subject to prior sale, errors and omissions, change of price, terms or other conditions or withdrawal from sale

Generated on: Feb. 18, 2016