

Howe Farm DeWitt County, Illinois



40.41 Acres

**Located in Section 16 of
Rutledge Township**

Listing Price: \$10,800/ Acre

Class A Soils Consisting of:

Sable, Ipava, Harpster, and Catlin.

Soil Productivity Index of 142.1

Location:

5 miles south of LeRoy.

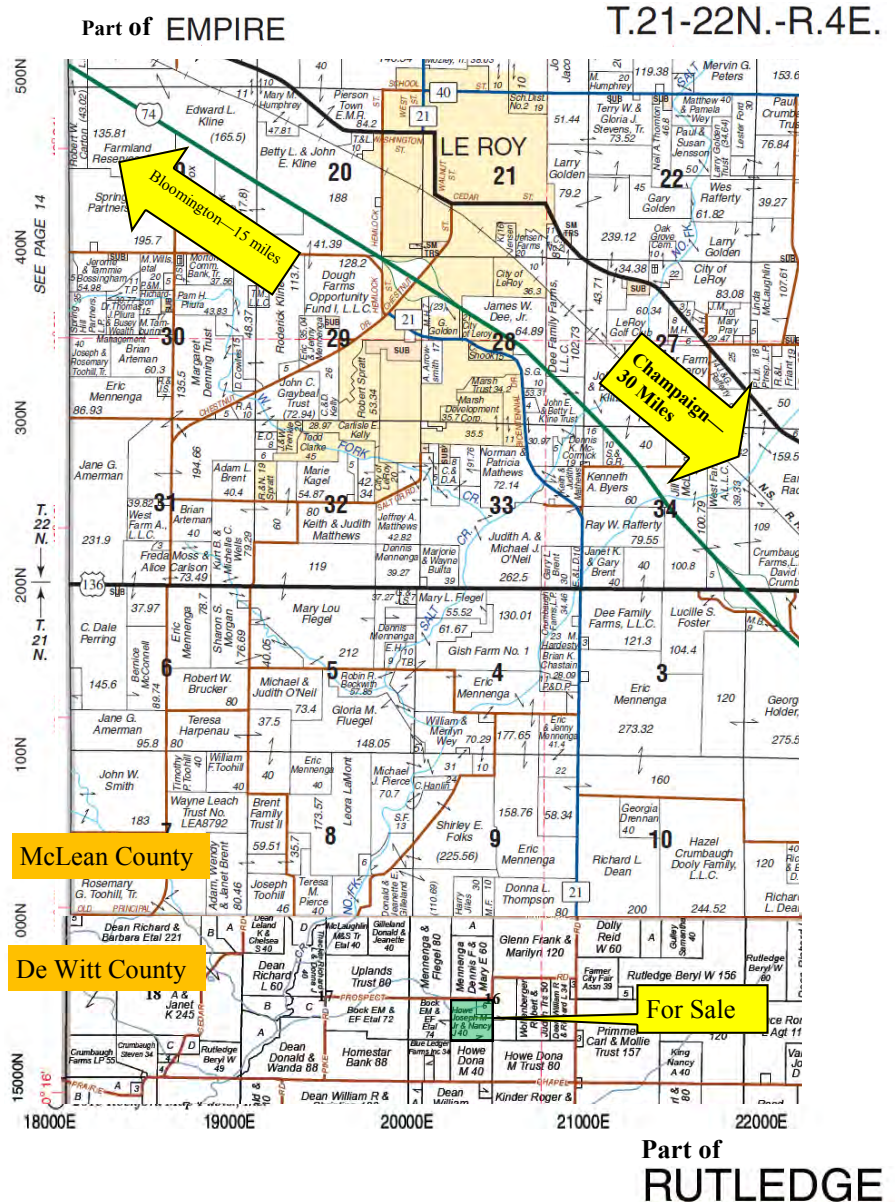
**1/2 mile west of the intersection of
Le Roy Road and Prospect Road.**

15 minutes from Bloomington.

30 minutes from Champaign.

Brief Summary of Terms:

10% down payment, 30 day closing.
Possession granted at closing.
Any unpaid 2015 real estate taxes to
be paid by Seller via credit at closing.
2016 and all future real estate taxes to
be paid by the Buyer.



Contact us for questions or to request a complete brochure.

Tyler Roth, Broker

troth@soybank.com

217-421-9619

Jim Flanigan, Managing Broker

jflanigan@soybank.com

217-421-9614

The information provided is believed to be accurate and representative. However, it is subject to verification and no liability for error omissions is assumed. The property is being sold in "as is" condition with no financing or inspection contingencies. There are no warranties, expressed or implied, as to the information contained herein and it is recommended that all buyers make an independent inspection of the property with the assistance of the listing broker. Soy Capital Ag Services, a division of Soy Capital Bank and Trust Company is the listing Broker, Tyler Roth, Broker is the designated agent and represents the Sellers in this transaction. Soy Capital, the Sellers and designated agent expressly disclaim any liability for errors, omissions or changes regarding any information provided. Potential buyers are urged to rely solely upon their own inspections and opinions in preparing to purchase this property and are expressly advised to not rely on any representations made by the Sellers or their agents. Tract does not contain a wetland..