

LAND FOR SALE

Medicine Creek Hunting & Range



Location:

Property is located approximately 1 mile south of Wellfleet, Nebraska bisected by Niles Road and bordered on the eastern boundary by Hwy 83.

Legal Description:

Pt. of E1/2 lying west of Hwy 83, SW1/4 Section 22-T9N-R30W of the 6th P.M., Lincoln County, Nebraska.

Acres:

Approximately 256 acres

Taxes:

Estimated 2015 taxes - \$1,460

Land Use:

Canyon rangeland with access to Medicine Creek.

Price:

~~\$320,000~~ **Price Reduced** \$299,000

Comments:

Excellent upland game hunting with productive range-land. Outdoor opportunities in fishing on area lakes, and public hunting on over 400 acres of State land located 1/2 mile to the east.

Contact:

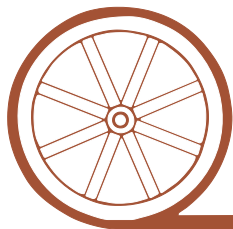
Bruce Dodson; Listing Agent 308-539-4455 or bruce@agriaffiliates.com
Jerry Weaver, Chase Dodson, Tony Eggleston, Mike Polk, Don Walker

Agri Affiliates—Providing Farm, Ranch Real Estate Services



Bruce Dodson,
Listing Agent

Offered Exclusively By:



AGRI AFFILIATES, INC.

...Providing Farm - Ranch Real Estate Services...

NORTH PLATTE OFFICE

P.O. Box 1166

I-80 & US Hwy 83

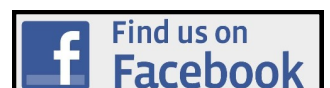
North Platte, NE 69103

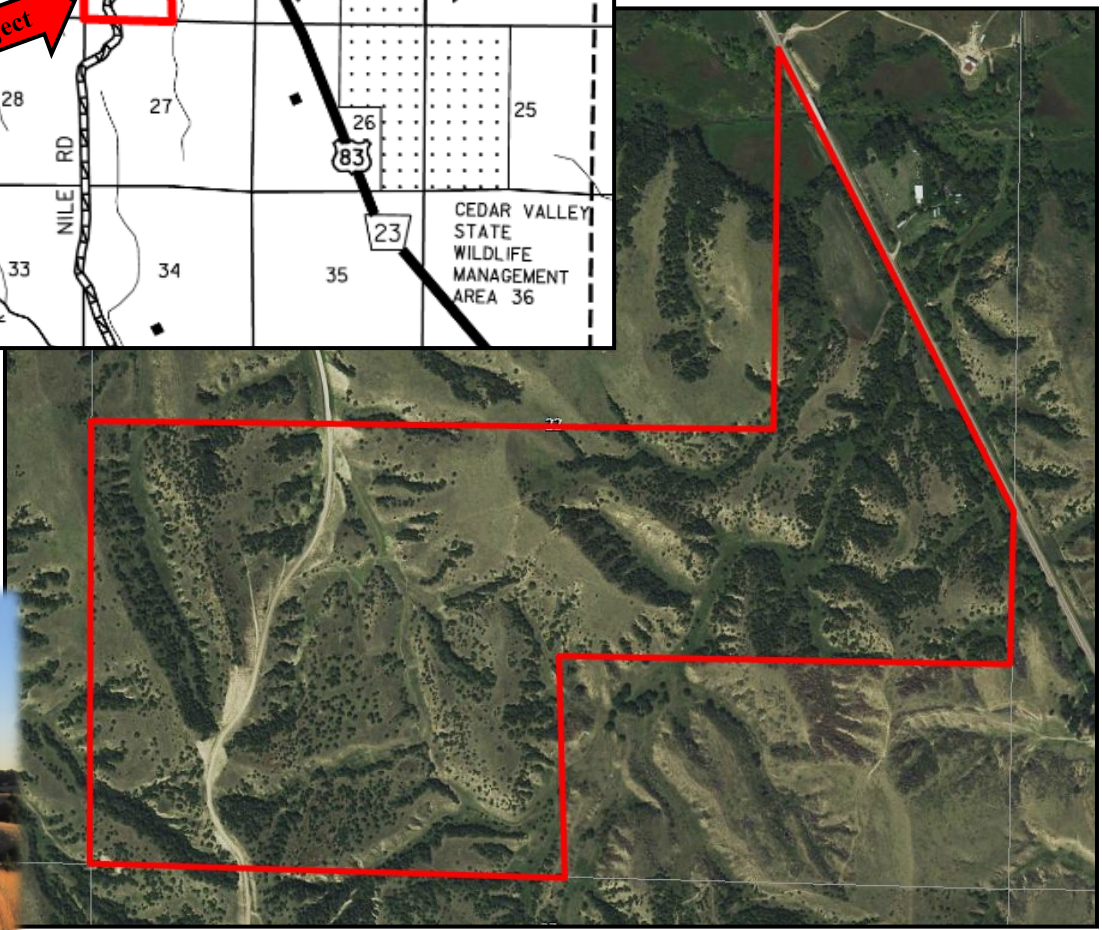
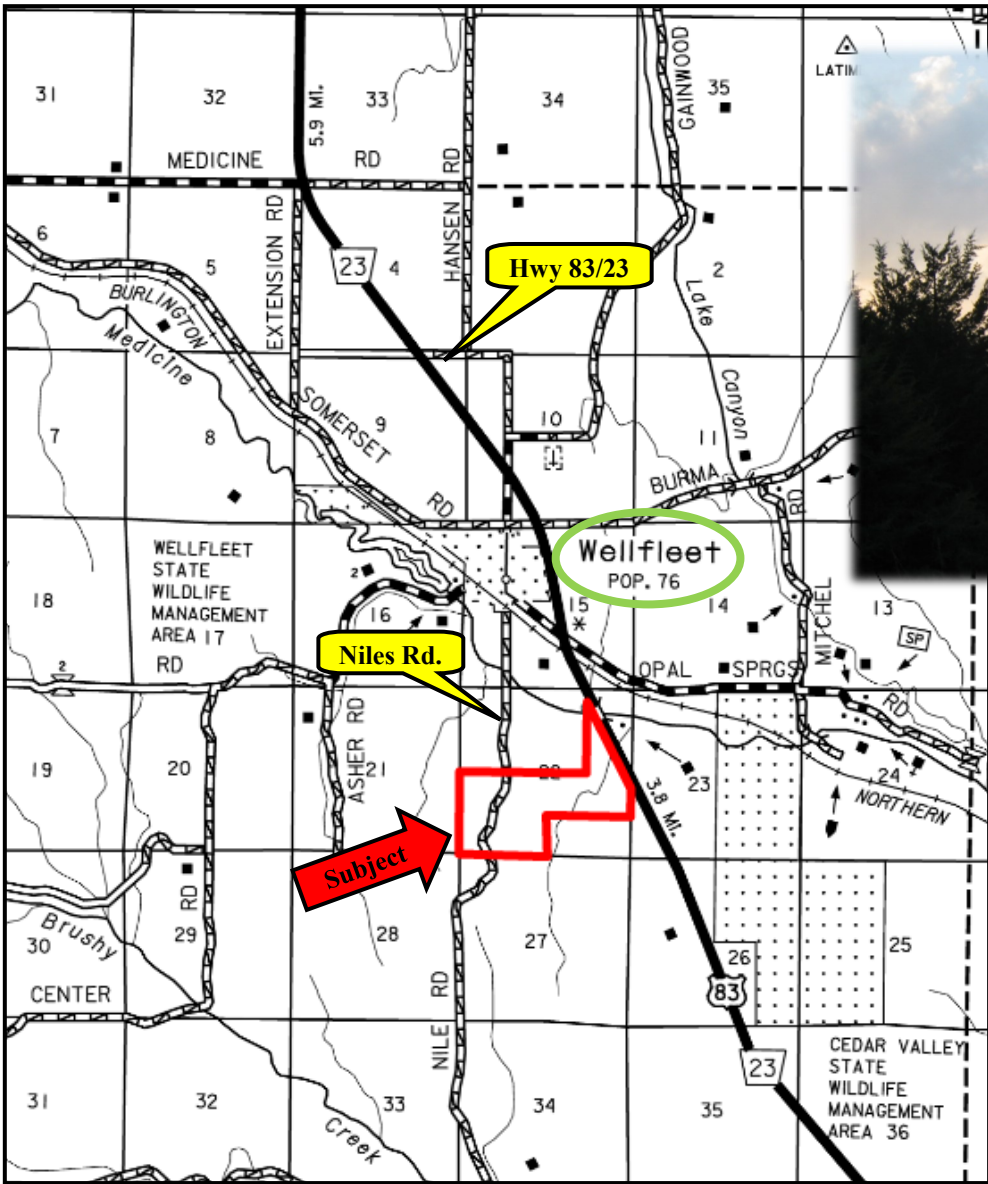
www.agriaffiliates.com

(308) 534-9240

Fax (308) 534-9244

Information contained herein was obtained from sources deemed reliable. We have no reason to doubt the accuracy, but we do not guarantee it. Prospective Buyers should verify all information, including items of income and expense. All maps provided by Agri Affiliates, Inc. are approximations only, to be used as a general guideline, and not intended as survey accurate. As with any agricultural land, this property may include noxious weeds.







AGRI AFFILIATES, INC.

... Providing Farm - Ranch Real Estate Services. ...