

LAND FOR SALE

Minatare Range



Location:

Three miles north of Lake Minatare on Henderson Road, or 7 miles east and 9.5 miles north of Scottsbluff, Nebraska.

Legal Description:

N1/2 Section 14; All Section 15, 21, 22, 24, 25, 26, 34, 35; E1/2, SW1/4 Section 27-T24N-R54W; All Section 30-T24N-R53W of the 6th PM, Sioux County, Nebraska. NE1/4, Part N1/2SE1/4, Part NE1/4SW1/4, NE1/4, Pt. N1/2SE1/4, Pt. NE1/4SW1/4, Pt NW1/4 Section 1-T23N-R54W of the 6th PM, Scottsbluff County, Nebraska.
School Lease - All of Section 36-T24N-R54W of the 6th PM, Sioux County, Nebraska.

Acres:

7,551.75 total acres, consisting of 6,911.75 deeded acres and 640 acre State Lease.

Taxes:

2015 taxes payable in 2016 - \$18,811.16

Rangeland:

Cross-fenced into 9 pastures and watered by 13 windmills and a solar well with bottomless tanks, 3 submersible wells and pipeline, for a total of 21 water sites. Access from county graveled Henderson Road.



Price:

Price Reduced to \$3,975,000

Comments:

Excellent hardland summer range for yearlings or pairs.

Contact:

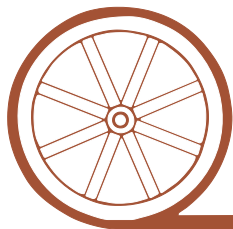
Bruce Dodson; Co-Listing Agent 308-539-4455 or bruce@agriaffiliates.com

Mike Polk; Co-Listing Agent 308-539-4446 or mike@agriaffiliates.com

Jerry Weaver, Dallas Dodson, Roger Luehrs, Chase Dodson, Tony Eggleston, Don Walker

Agri Affiliates—Providing Farm, Ranch Real Estate Services

Offered Exclusively By:



AGRI AFFILIATES, INC.

...Providing Farm - Ranch Real Estate Services...

NORTH PLATTE OFFICE

P.O. Box 1166

I-80 & US Hwy 83

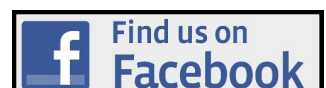
North Platte, NE 69103

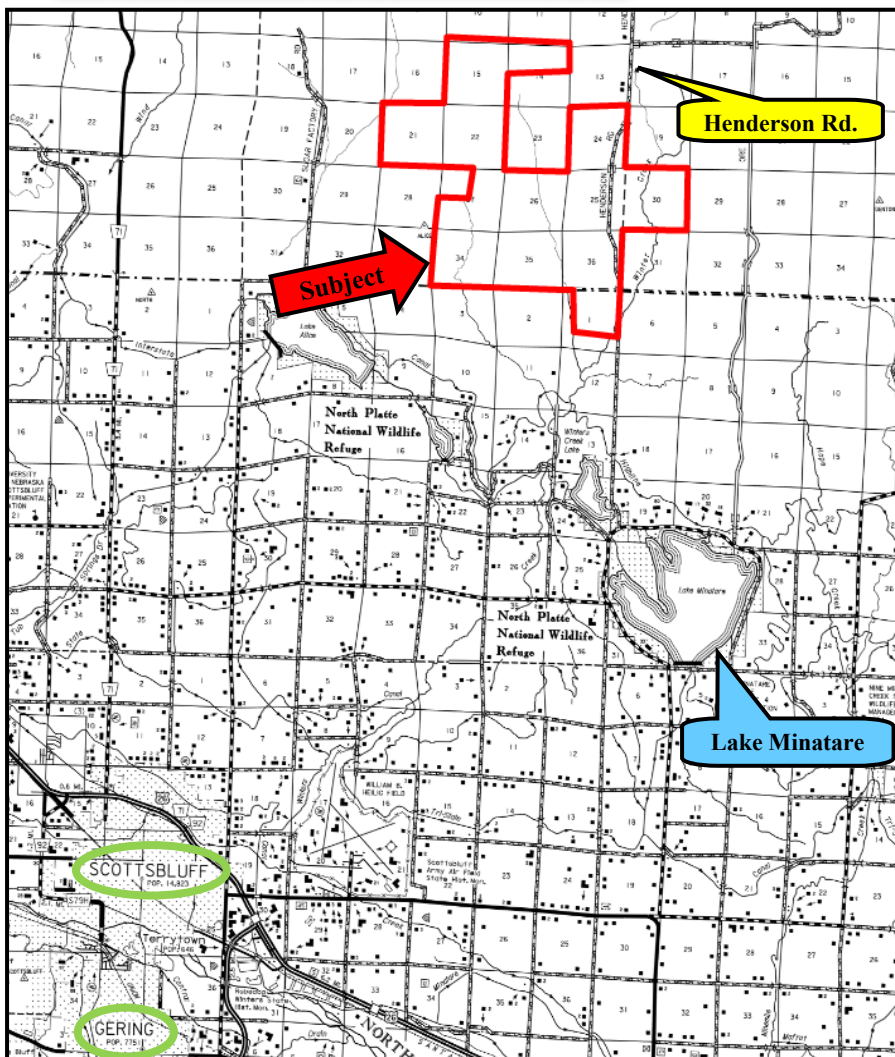
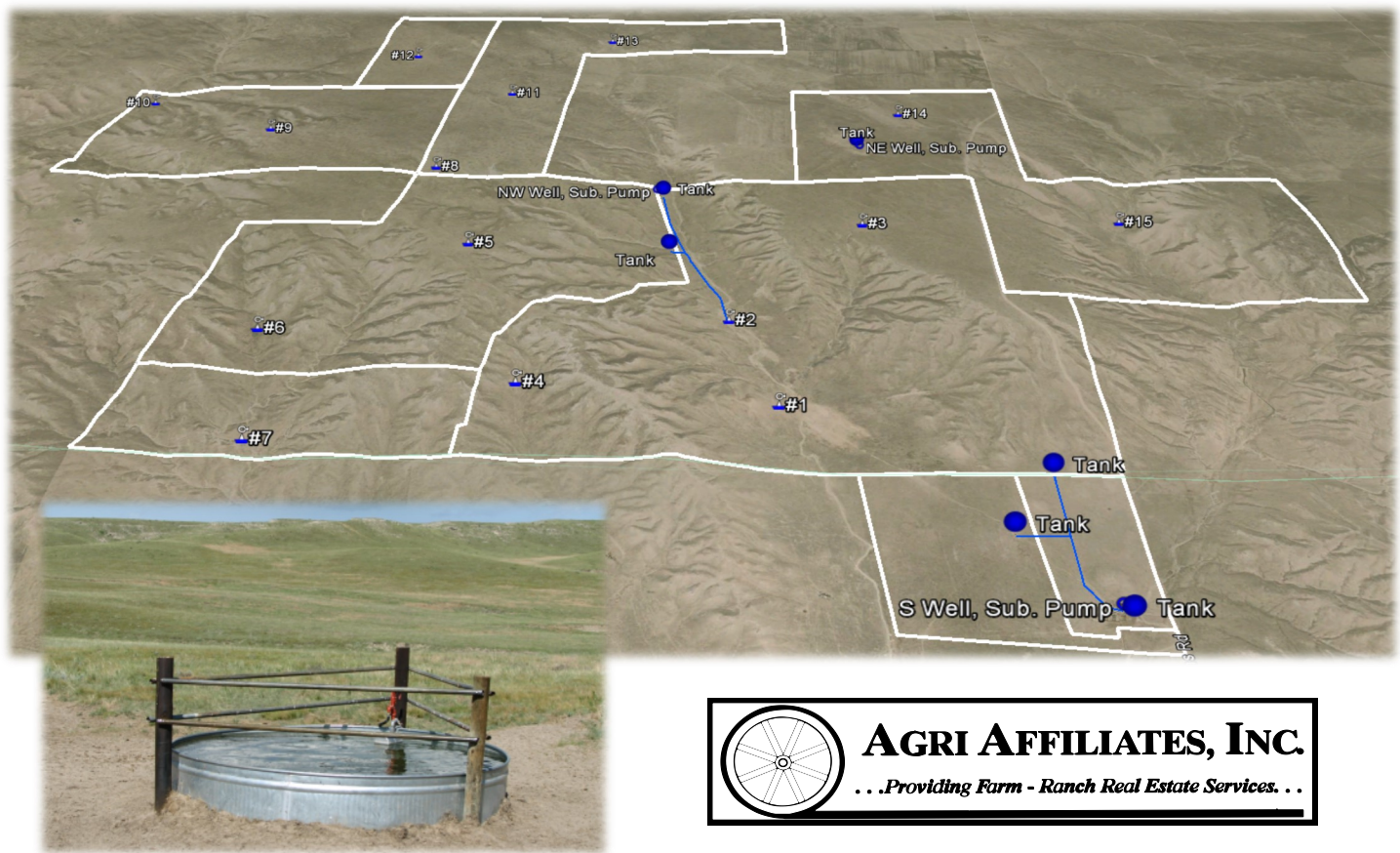
www.agriaffiliates.com

(308) 534-9240

Fax (308) 534-9244

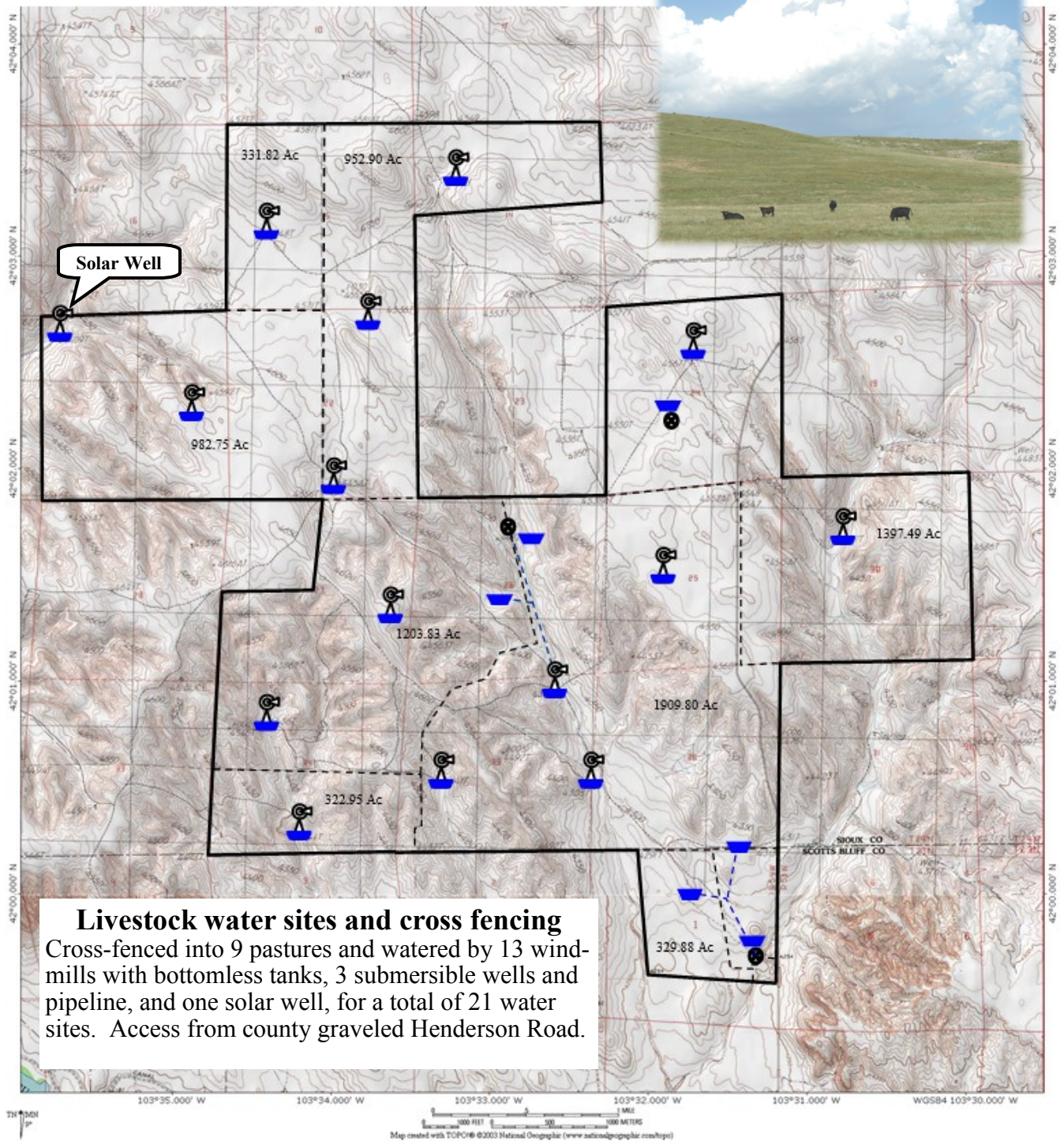
Information contained herein was obtained from sources deemed reliable. We have no reason to doubt the accuracy, but we do not guarantee it. Prospective Buyers should verify all information, including items of income and expense. All maps provided by Agri Affiliates, Inc. are approximations only, to be used as a general guideline, and not intended as survey accurate. As with any agricultural land, this property may include noxious weeds.





All maps provided by Agri Affiliates, Inc. are approximations only, to be used as a general guideline, and not intended as survey accurate.







AGRI AFFILIATES, INC.

...Providing Farm - Ranch Real Estate Services. . .



Scenic open spaces...

