

\$1,165,500



Yocona River Ranch

518+/- Acres Recreation / Investment Property

Lafayette County, MS

[Click to View Map](#)

- + Excellent recreation tract—hunt deer, turkey, and ducks
- + Diverse land set up perfectly for wildlife
- + Great mix of row crop, hardwoods, and several ages of planted pine
- + Several wildlife food plots connected by internal road system
- + Property borders the beautiful Yocona River
- + County road frontage with several access points
- + Approximately 90 acres farmed and cash rented
- + Less than 20 miles from Oxford
- + Remarkable buy in Lafayette County at only \$2,250/acre

Fargason Erb, ALC | ferb@burchrealtygroup.com | 901.277.9055

www.burchrealtygroup.com | 6879 Crumpler Blvd, Suite 101 Olive Branch, MS 38654

Yocona River Ranch

518+/- Acres Recreation / Investment Property



Fargason Erb, ALC | ferb@burchrealtygroup.com | 901.277.9055

www.burchrealtygroup.com | 6879 Crumpler Blvd, Suite 101 Olive Branch, MS 38654

Yocona River Ranch

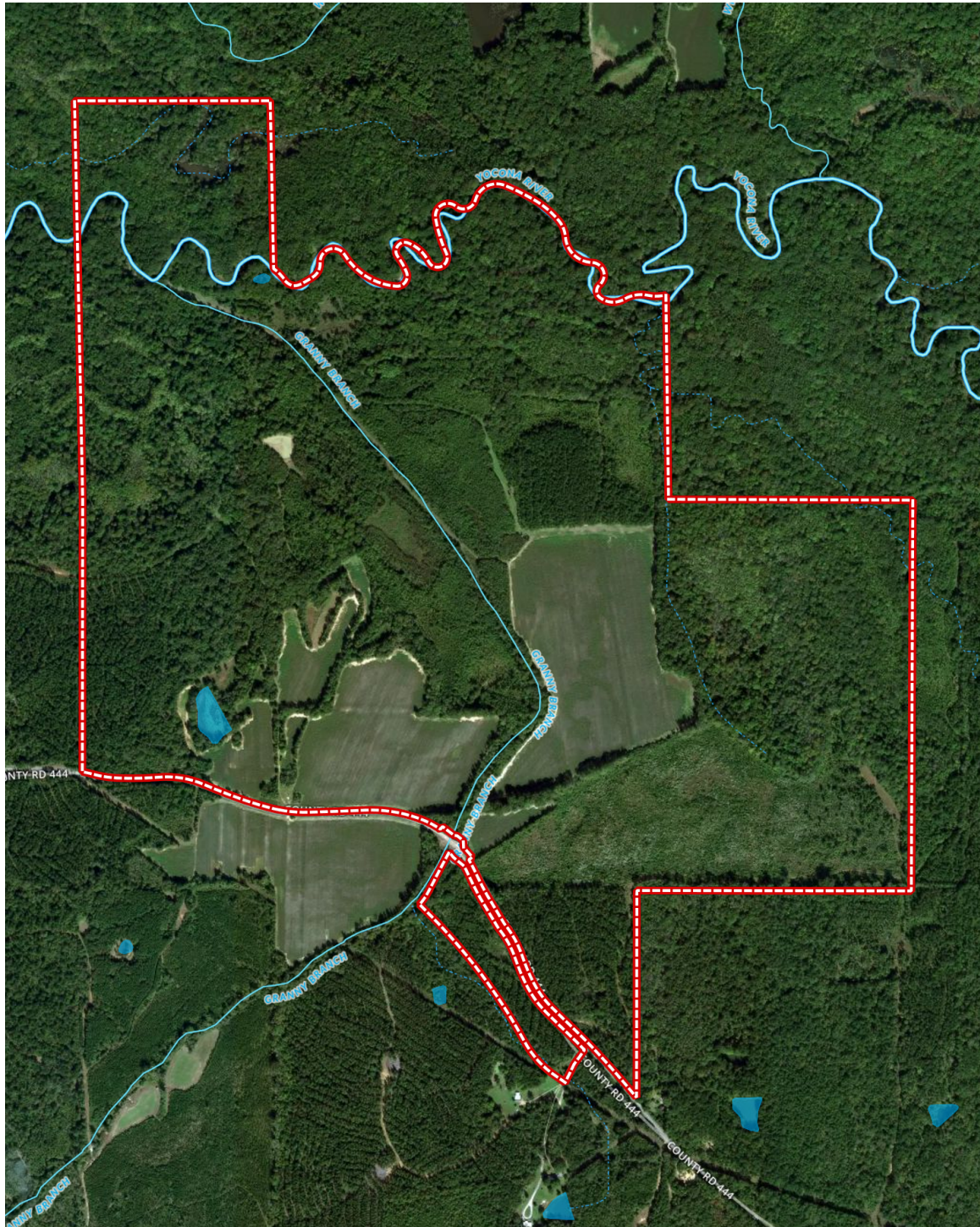
518+/- Acres Recreation / Investment Property



Fargason Erb, ALC | ferb@burchrealtygroup.com | 901.277.9055

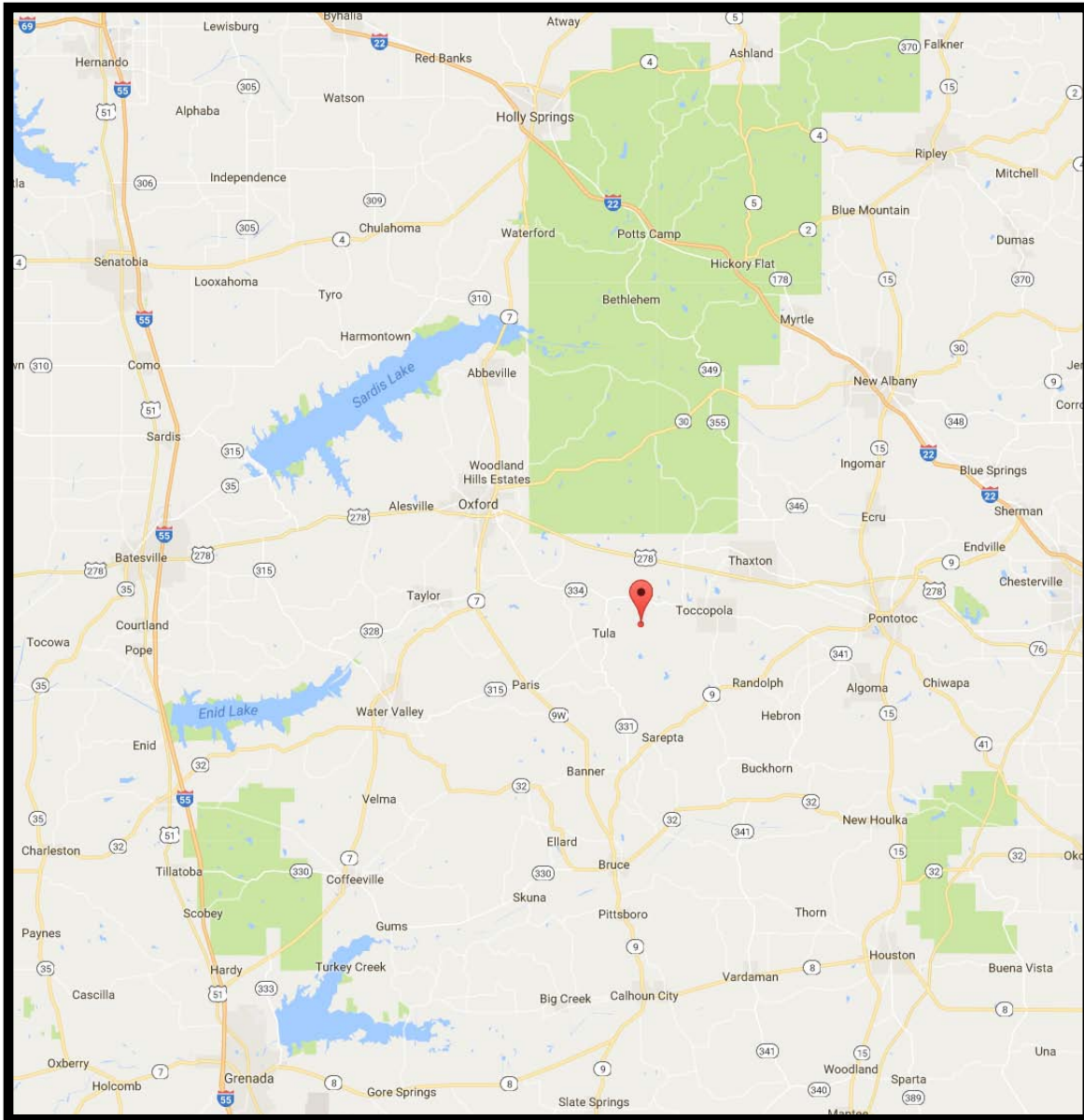
www.burchrealtygroup.com | 6879 Crumpler Blvd, Suite 101 Olive Branch, MS 38654

Aerial Map



Yocona River Ranch

Location Map



Burch Realty Group is the Exclusive Agent for the property described herein. This brochure and all information contained herein is believed to be correct; however, we make no guarantee as to its accuracy. Prospective buyers are urged to inspect the property and perform their own independent due diligence. Burch Realty Group and its agents assume no liability as to errors, omissions or investment results.

Fargason Erb, ALC | ferb@burchrealtygroup.com | 901.277.9055

www.burchrealtygroup.com | 6879 Crumpler Blvd, Suite 101 Olive Branch, MS 38654