



Trigg County Hunting Preserve "For Sale" 1,754 +/- Acres



Rare Hunting/Timber Investment Property in Western KY

Trigg County Hunting Preserve is a true legacy property. This preserve is located in the heart of Western Kentucky's big buck area only five miles from the famous Land between the Lakes National Recreation Area. The property offers first-class recreational opportunities and the ability to produce significant income from timber harvests.

HARVESTERS LAND CO.





Property Detail

World-class deer hunting is a reality at Trigg County Hunting Preserve. The preserve is the centerpiece of a 5,000+ acre contiguous block of private trophy deer management. A custom-built log cabin overlooking a beautiful 3.5 acre lake provides comfortable lodging and serves as a headquarters. In the springtime, you can sit on the cabin's porch and hear gobbles echo across the lake or watch deer feed above the lake in the clover. This is just the beginning..... There are over 30 established food plots and 11+ miles of roads and improved trails to explore. It is not uncommon to see 25+ deer and 30+ turkeys during an afternoon hunt in one of the larger food plots. The vast hardwood timber stands are impressive providing excellent wildlife habitat and a sustainable income stream. Weekend trips to the preserve from West and Middle Tennessee are an easy drive at only a 1 ½ hours from Nashville and 3 ½ hours from Memphis. Trigg County Hunting Preserve is perfect for a family retreat yet large enough for a first-class sporting club. Call today to schedule a tour of this rare property!

Features and Amenities:

- Custom-built log cabin overlooking 3.5 acre fishing lake
- Guest cabin with additional campsites and utilities connections
- 30+/- established food plots
- Significant timber value with over 1,300 acres of merchantable timber – primarily hardwood timber (timber cruise available upon request)
- Under professional wildlife and timber management for the last 9 years with low hunting pressure
- Intricate road system with 11 + miles of improved private trails and roads
- Wildlife ponds and food plots have been strategically developed throughout the property to enhance turkey and deer habitat
- Farm shop building
- Nearby watersports: Store your ski boat or fishing boat in the farm shop and enjoy the nearby 58,000 acre Lake Barkley (property is 4 miles from Lake Barkley public boat ramp)
- Excellent equity hunting club opportunity
- Scenic riding trails and pasture areas perfect for horse enthusiasts

HARVESTERS LAND CO.





Photo Tour



HARVESTERS LAND CO.





HARVESTERS LAND CO.





HARVESTERS LAND CO.





HARVESTERS LAND CO.



HARVESTERS LAND CO.





HARVESTERS LAND CO.

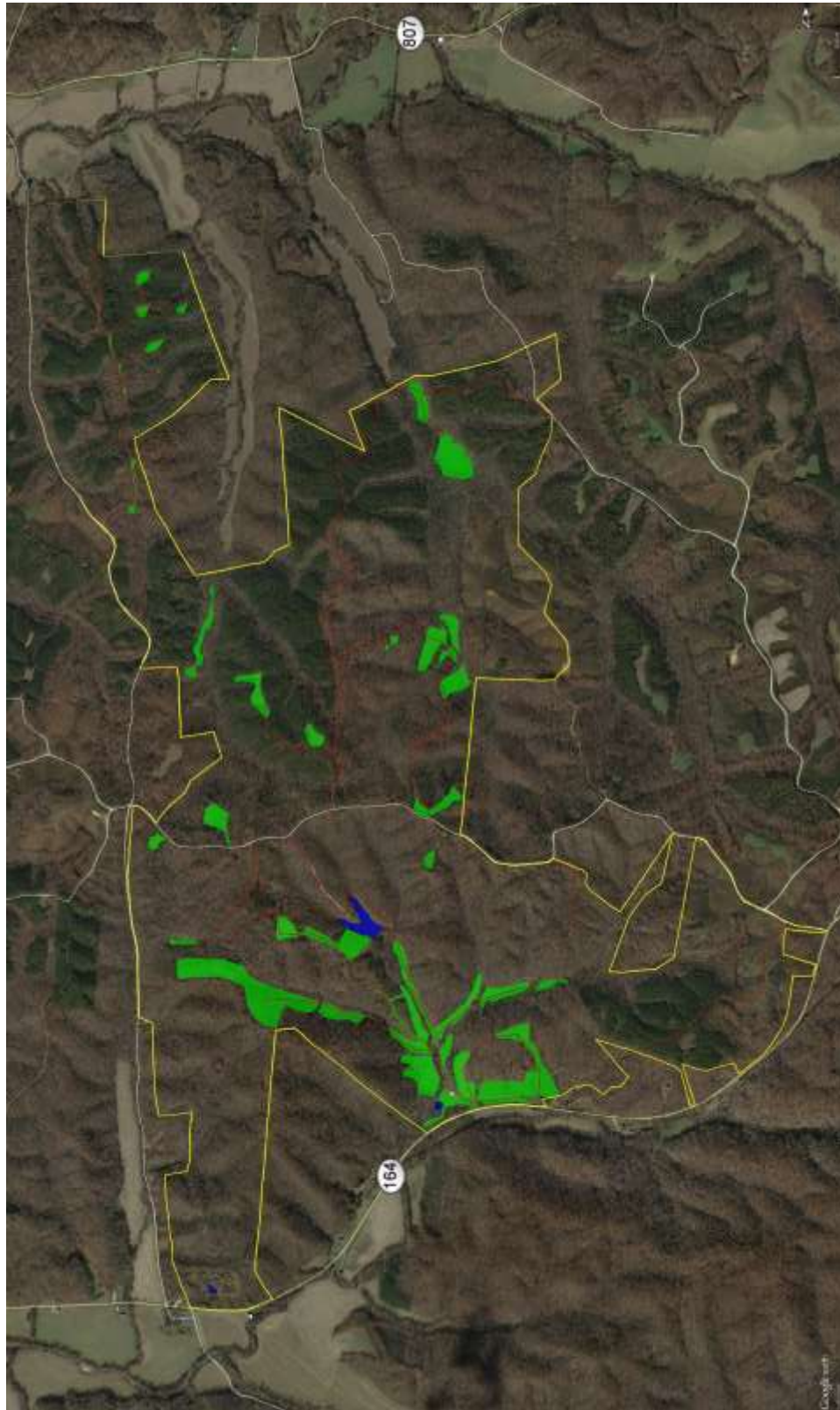


HARVESTERS LAND CO.





Satellite Photo

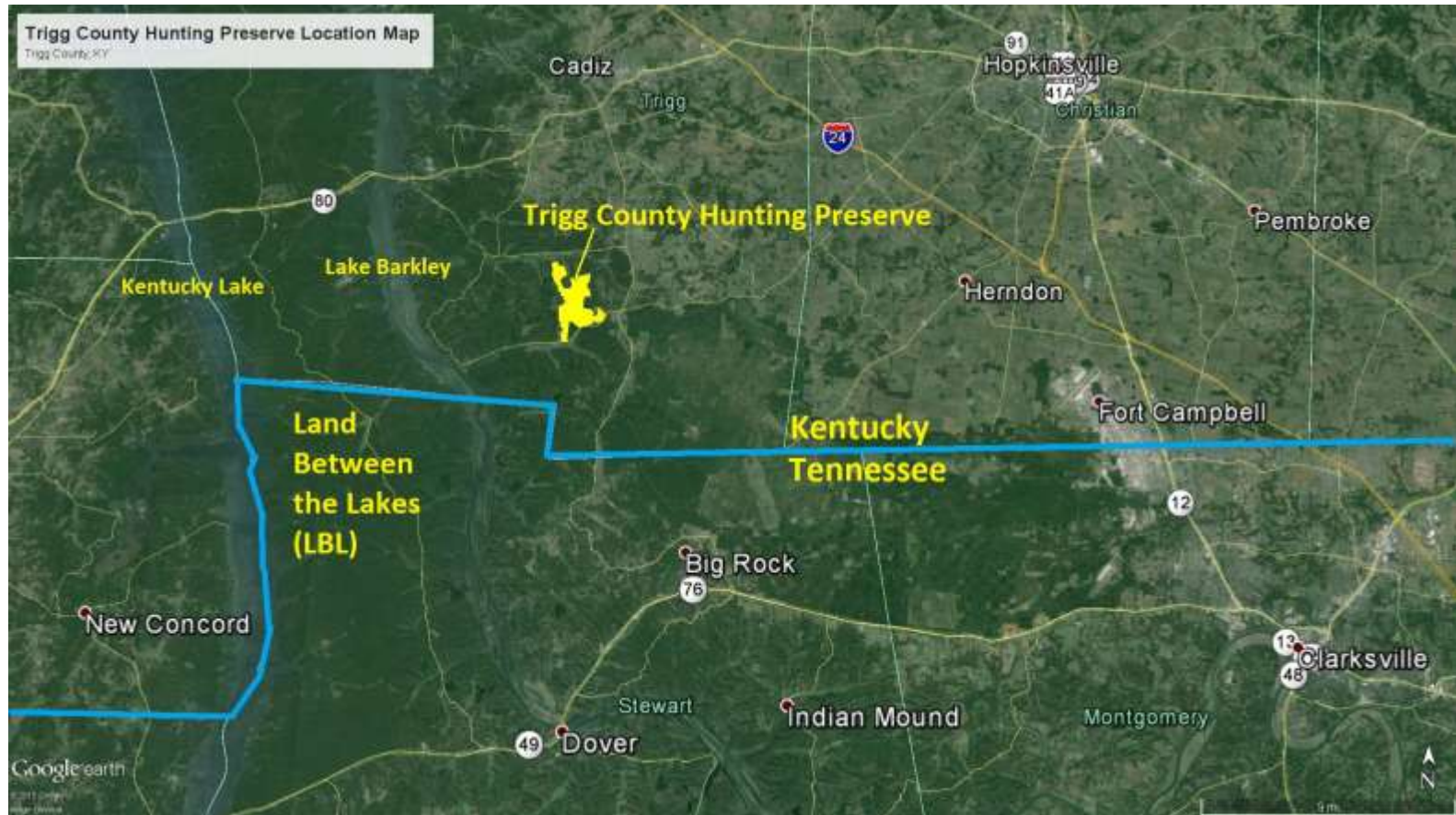


HARVESTERS LAND CO.





Location Map - Wide



HARVESTERS LAND CO.

