

GATLIN BLVD

2.43± acres

St. Lucie County, FL

**UNDER
CONTRACT**



LOCATION

The property is located on the northwest corner of Brescia Street and Gatlin Blvd.

SIZE

2.43± acres

PRICE

\$1,200,000 or \$11.34/sq ft

ZONING

Residential. FLU is Commercial Highway and Medium Density Residential.

ROAD FRONTAGE

160± feet on north side of Gatlin Blvd
435± feet on west side of Brescia Street

UTILITIES

Water and Sewer are available along Gatlin Blvd.

Offering subject to errors, omission, prior sale or withdrawal without notice.

LAND FOR SALE

— Commercial Real Estate Investments | Management | Brokerage | Development | Land

Maury L. Carter & Associates, Inc.
407-422-3144 | www.maurycarter.com

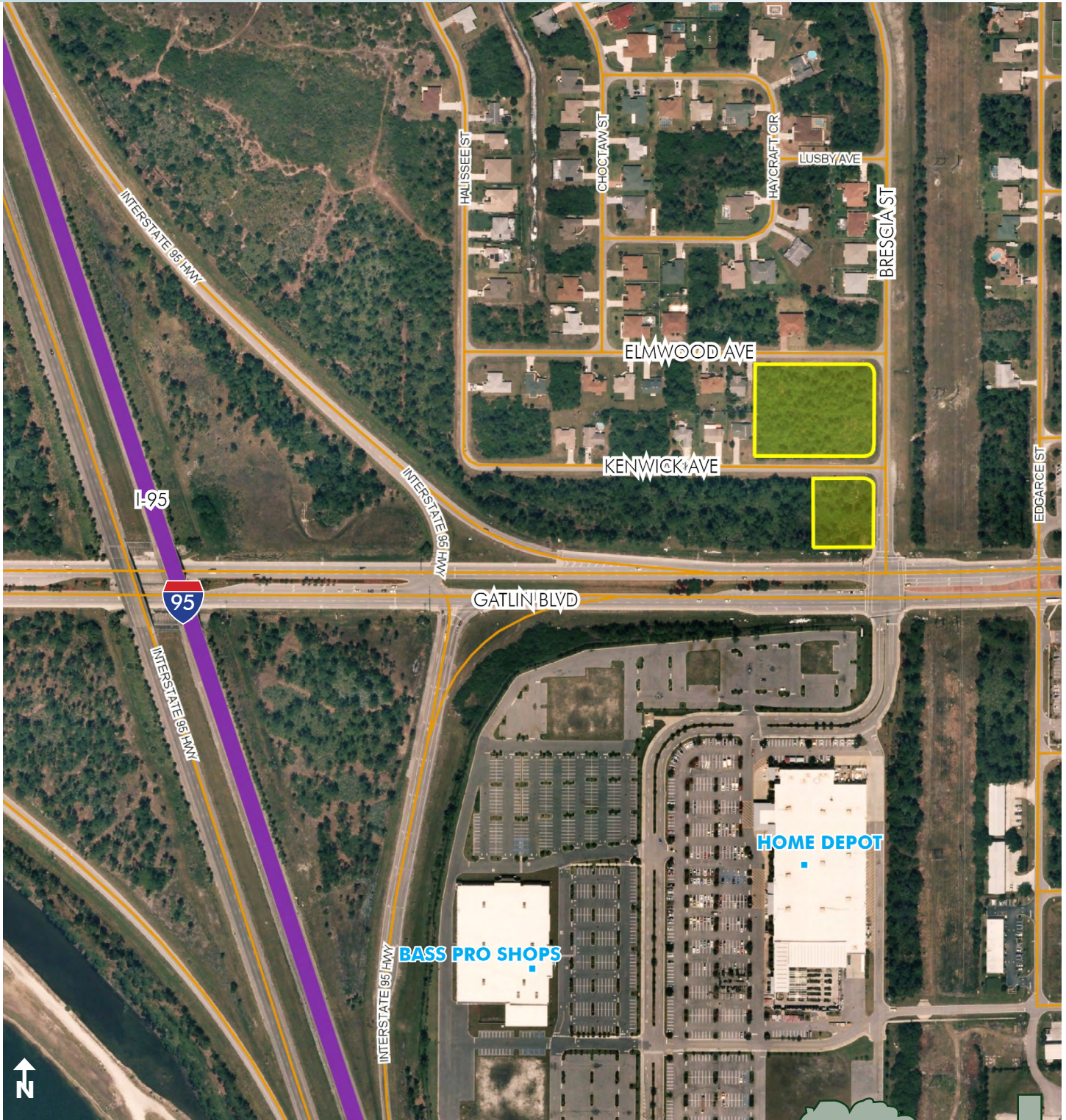


GATLIN BLVD

2.43± acres

St. Lucie County, FL

**UNDER
CONTRACT**



PROPERTY MAP

— Commercial Real Estate Investments | Management | Brokerage | Development | Land

Maury L. Carter & Associates, Inc.
407-422-3144 | www.maurycarter.com

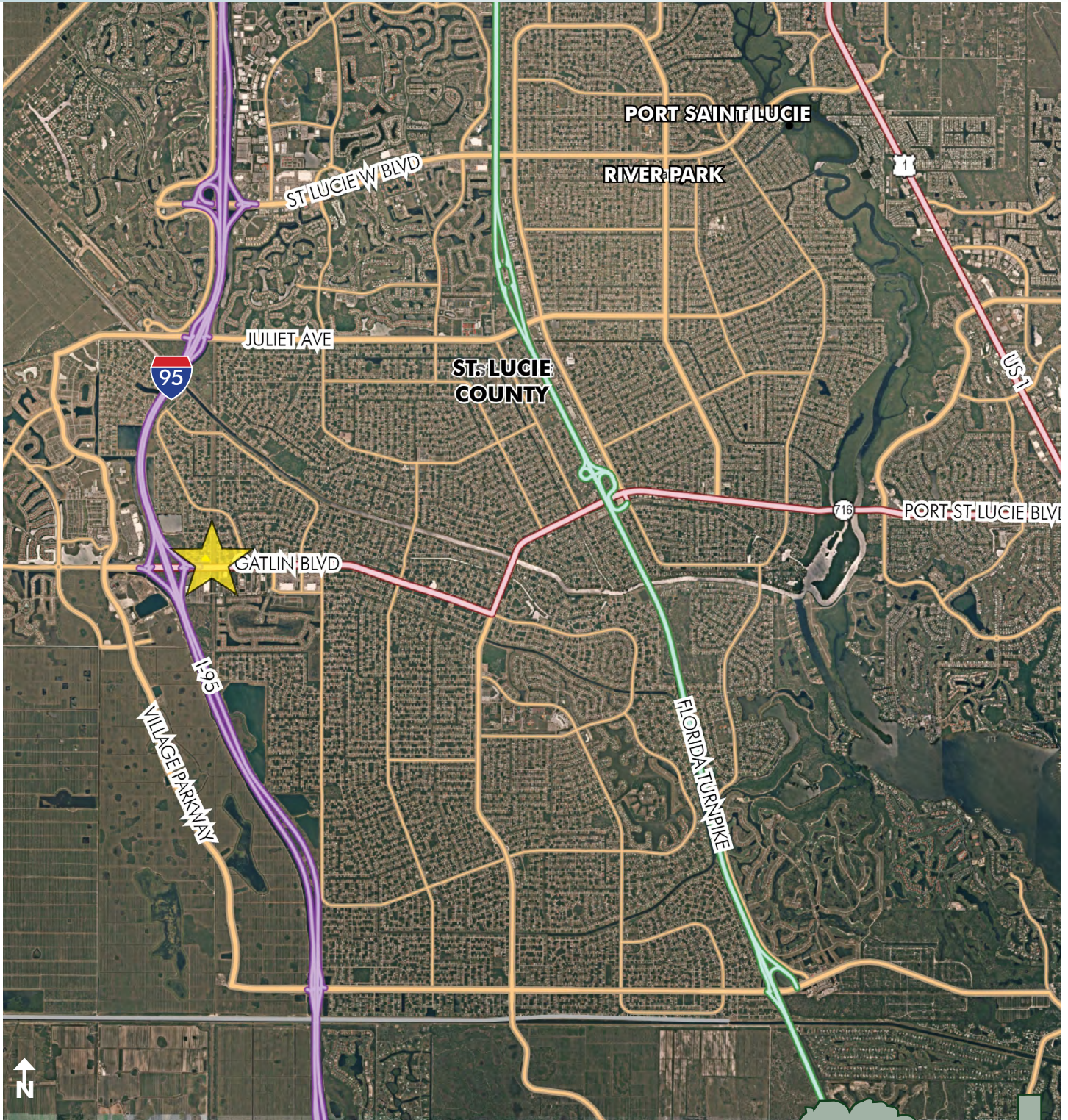


GATLIN BLVD

2.43± acres

St. Lucie County, FL

**UNDER
CONTRACT**



LOCATION MAP

— Commercial Real Estate Investments | Management | Brokerage | Development | Land

Maury L. Carter & Associates, Inc.

407-422-3144 | www.maurycarter.com

