



Sealed Bid Land Sale Map

Brooks Tract

Clay County GA

Bid Opening 11/12/2015
See Bid Invitation for Details

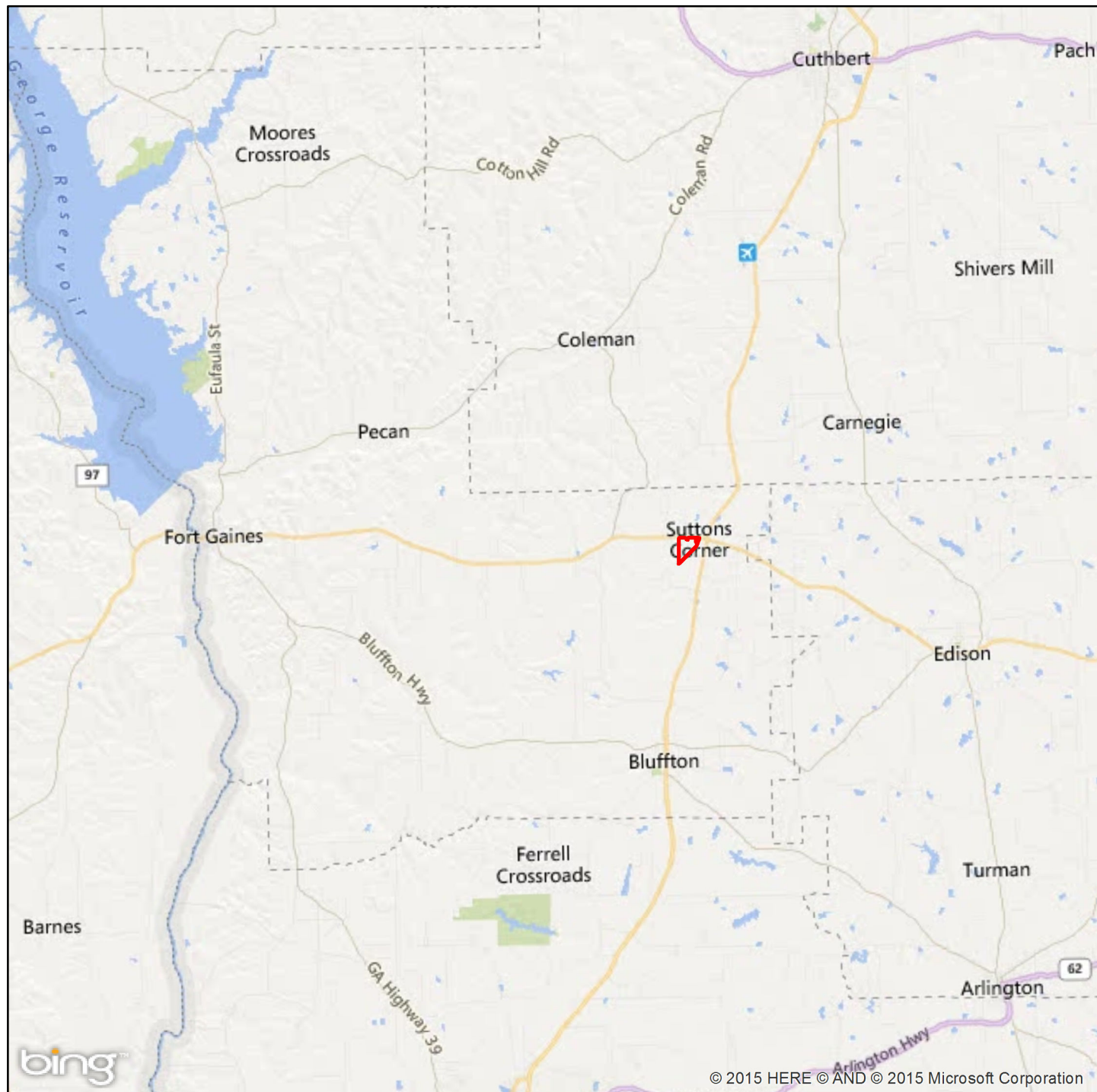
Legend

TractNum

1023

Note: The property was recently clearcut. The site is a great "old-field" site, ideal for ag conversion or highly productive timberland, and potential future development. The property is bounded by GA37 on the north, US27 on the east, power R/W on the southeast, and an irrigated ag field on the west.

*Property lines are approximate. Property to be surveyed prior to closing. See bid package for details.



www.matreforestry.com
Albany, Georgia
229-639-4973

1:227,273 1 in = 18,939 ft 1 in = 3.6 miles

0 2.5 5 10 Miles

© 2015 HERE © AND © 2015 Microsoft Corporation

Mapped by Mike Matre in ArcGIS.
Last update on 12/10/2015
Map information is not guaranteed.



Sealed Bid Land Sale Map

Brooks Tract

Clay County GA

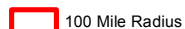
Bid Opening 11/12/2015
See Bid Invitation for Details

Legend

TractNum



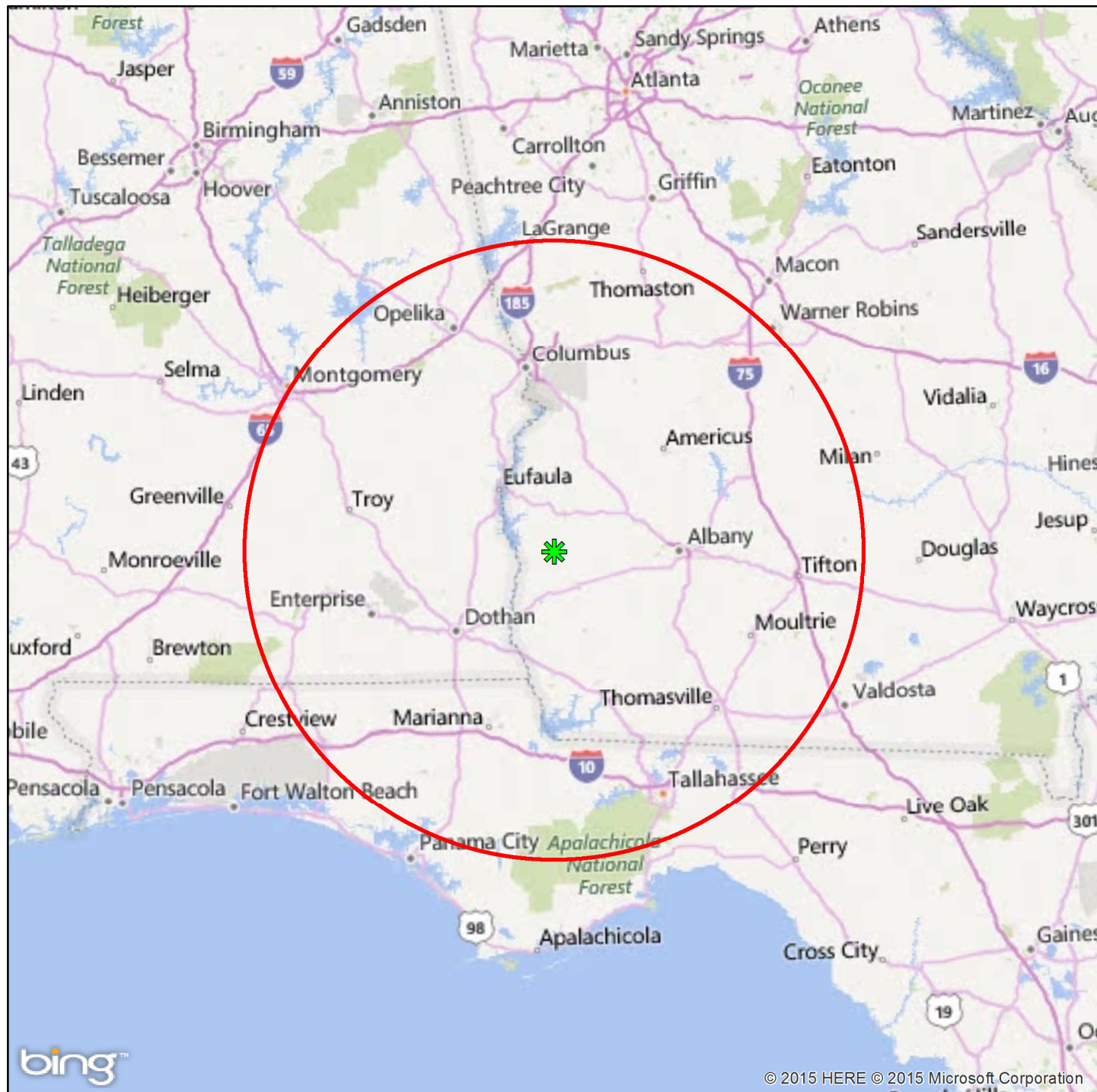
1023



100 Mile Radius

Note: The property was recently clearcut. The site is a great "old-field" site, ideal for ag conversion or highly productive timberland, and potential future development. The property is bounded by GA37 on the north, US27 on the east, power R/W on the southeast, and an irrigated ag field on the west.

*Property lines are approximate. Property to be surveyed prior to closing. See bid package for details.



www.matreforestry.com
Albany, Georgia
229-639-4973

1:3,000,000 in = 250,000 ft 1 in = 47.3 miles

0 25 50 100 Miles

© 2015 HERE © 2015 Microsoft Corporation

Mapped by Mike Matre in ArcGIS.
Last update on 12/10/2015
Map information is not guaranteed.




Sealed Bid Land Sale Map

Brooks Tract

Clay County GA

Bid Opening 11/12/2015
See Bid Invitation for Details

Legend

 Tract Boundaries

Note: The property was recently clearcut. The site is a great "old-field" site, ideal for ag conversion or highly productive timberland, and potential future development. The property is bounded by GA37 on the north, US27 on the east, power R/W on the southeast, and an irrigated ag field on the west.

*Property lines are approximate. Property to be surveyed prior to closing. See bid package for details.



www.matreforestry.com
Albany, Georgia
229-639-4973

1:7,920 1 in = 660 ft 1 in = 0.1 miles

0 330 660 1,320 Feet

Mapped by Mike Matre in ArcGIS.
Last update on 12/10/2015
Map information is not guaranteed.



Sealed Bid Land Sale Map

Brooks Tract

Clay County GA

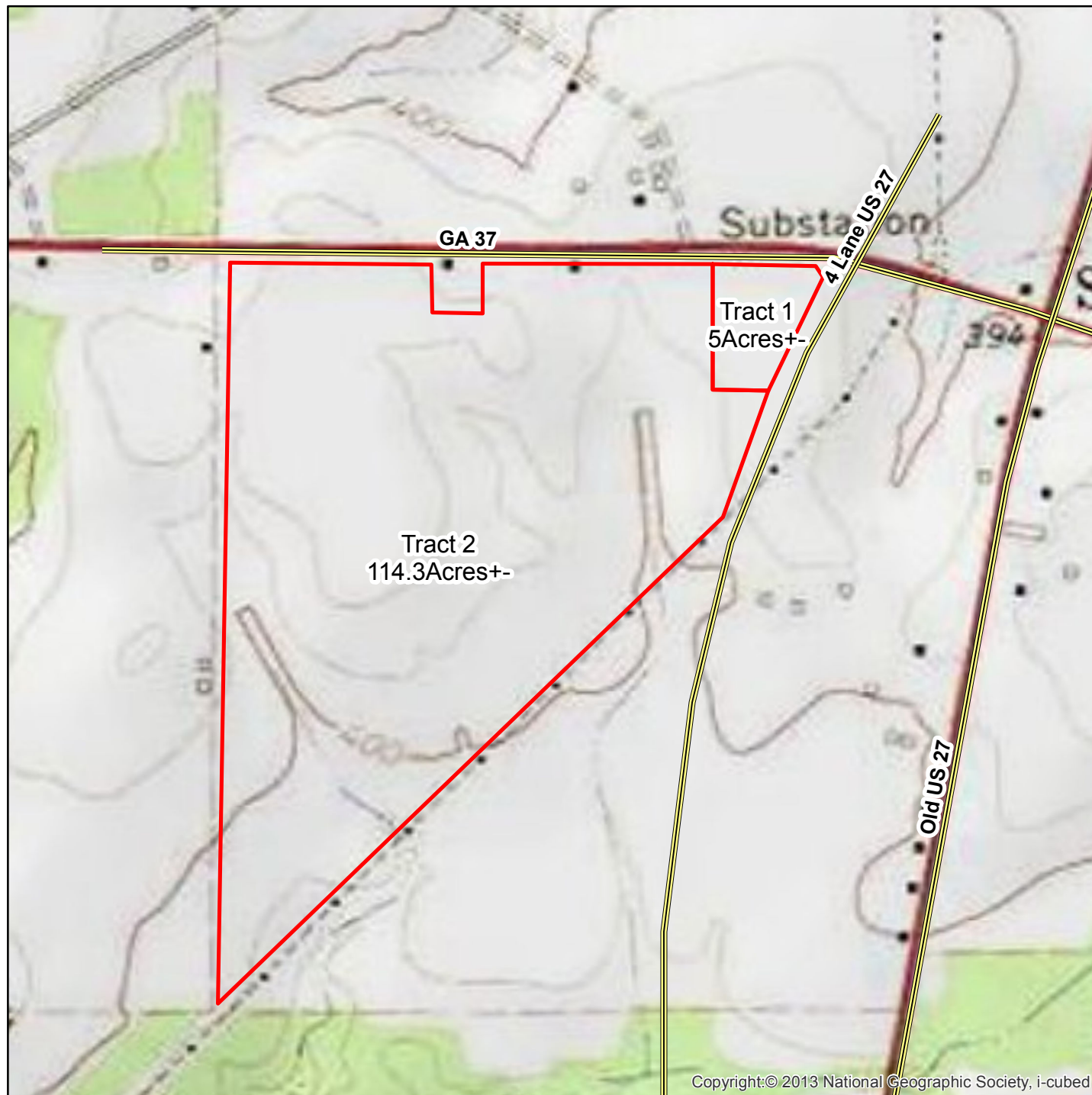
Bid Opening 11/12/2015
See Bid Invitation for Details

Legend

Tract Boundaries

Note: The property was recently clearcut. The site is a great "old-field" site, ideal for ag conversion or highly productive timberland, and potential future development. The property is bounded by GA37 on the north, US27 on the east, power R/W on the southeast, and an irrigated ag field on the west.

*Property lines are approximate. Property to be surveyed prior to closing. See bid package for details.



Copyright:© 2013 National Geographic Society, i-cubed



www.matreforestry.com
Albany, Georgia
229-639-4973

1:7,920 1 in = 660 ft 1 in = 0.1 miles

0 330 660 1,320 Feet

Mapped by Mike Matre in ArcGIS.
Last update on 12/10/2015
Map information is not guaranteed.