



**PRICE  
REDUCED!**

## FOR SALE

Amador Hilltop Cabin

12000 Twin Pines Road

Amador County

±40.09 acres

~~PRICE: \$259,000~~

**PRICE REDUCED**

**\$239,000**

## SUTTER CREEK HILLTOP CABIN

*1,480 square foot cabin situated on 40 acres on a hilltop with power to site. Excellent view of entire valley, Secluded. Close to Drytown and Sutter Creek. Views of the sierra mountains. Plenty of wildlife including deer and wild turkeys. Makes great second home between San Francisco and Lake Tahoe.*

**TRI Outdoor Properties**

LAND BROKERAGE / Recreational · Agricultural · Conservation

A Division of TRI Commercial Real Estate

*Building Great Relationships Between People and the Outdoors*



**SERVING  
NORTHERN & CENTRAL  
CALIFORNIA**



# SUTTER CREEK HILLTOP CABIN

**12000 Twin Pines  
Sutter Creek, CA 95685**

**Cross Street: Meath Drive**

**APN: 015-100-049**

**Acres: 40.09**

**Elevation: 1,500 to 1,600 feet**

**Latitude: 38.451026**

**Longitude: -120.789932**

**Zoning: Agriculture**

**MLS: 15021268 on realtor.com**

**Price: \$239,000**

**Improvements: 1,480 square foot  
cabin plus storage shed**

**Showing Instructions:  
Contact Listing Agents**



**TRI** *Outdoor Properties*

**LAND BROKERAGE / Recreational · Agricultural · Conservation**

*A Division of TRI Commercial Real Estate*

*Building Great Relationships Between People and the Outdoors*

**SERVING  
NORTHERN & CENTRAL  
CALIFORNIA**



## SUTTER CREEK HILLTOP CABIN

**TRI** *Outdoor Properties*

LAND BROKERAGE / Recreational · Agricultural · Conservation

A Division of TRI Commercial Real Estate

*Building Great Relationships Between People and the Outdoors*

SERVING  
NORTHERN & CENTRAL  
CALIFORNIA



# SUTTER CREEK HILLTOP CABIN



**TRI** *Outdoor Properties*

LAND BROKERAGE / Recreational · Agricultural · Conservation

A Division of TRI Commercial Real Estate

*Building Great Relationships Between People and the Outdoors*

SERVING  
NORTHERN & CENTRAL  
CALIFORNIA

# SUTTER CREEK HILLTOP CABIN



**TRI** *Outdoor Properties*  
LAND BROKERAGE / Recreational · Agricultural · Conservation  
A Division of TRI Commercial Real Estate  
*Building Great Relationships Between People and the Outdoors*

SERVING  
NORTHERN & CENTRAL  
CALIFORNIA



# SUTTER CREEK HILLTOP CABIN



Second Level



**TRI** *Outdoor Properties*

LAND BROKERAGE / Recreational · Agricultural · Conservation

A Division of TRI Commercial Real Estate

*Building Great Relationships Between People and the Outdoors*

SERVING  
NORTHERN & CENTRAL  
CALIFORNIA





# SUTTER CREEK HILLTOP CABIN

**TRI** *Outdoor Properties*

LAND BROKERAGE / Recreational · Agricultural · Conservation

A Division of TRI Commercial Real Estate

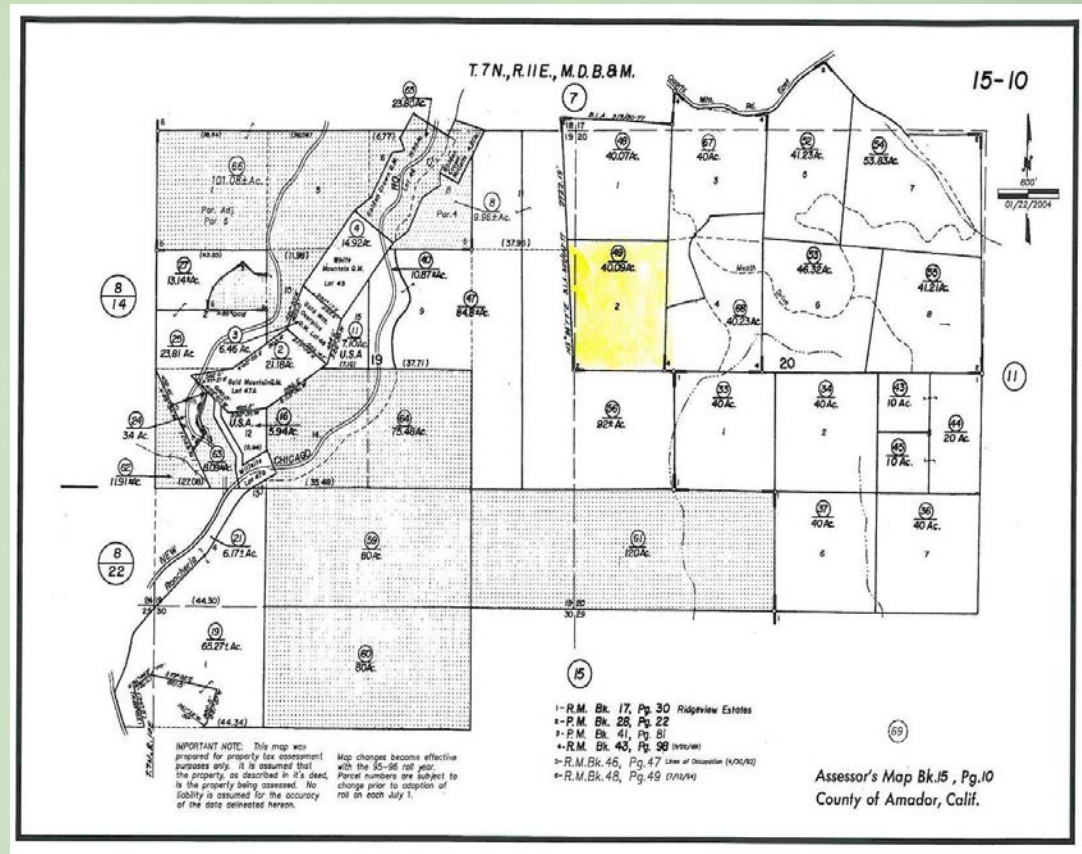
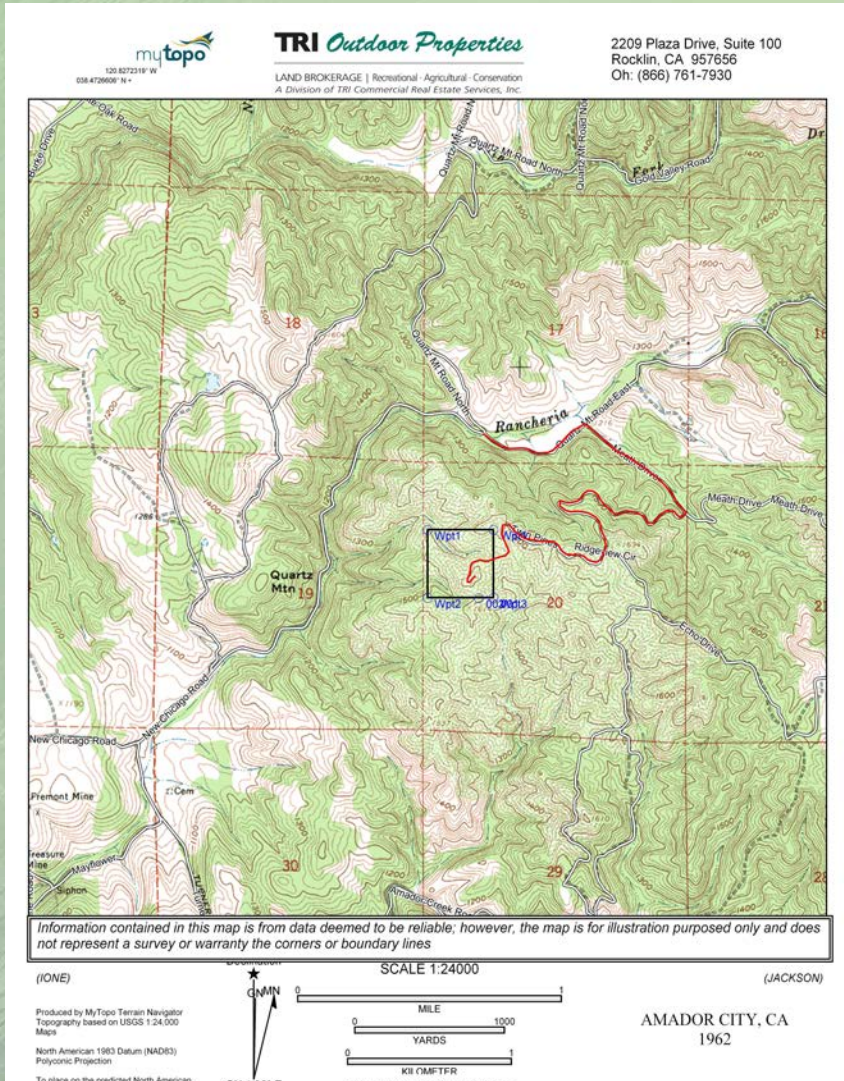
*Building Great Relationships Between People and the Outdoors*

SERVING  
NORTHERN & CENTRAL  
CALIFORNIA



# SUTTER CREEK HILLTOP CABIN

*Great Country Living, Amador County ±40.09 acres*



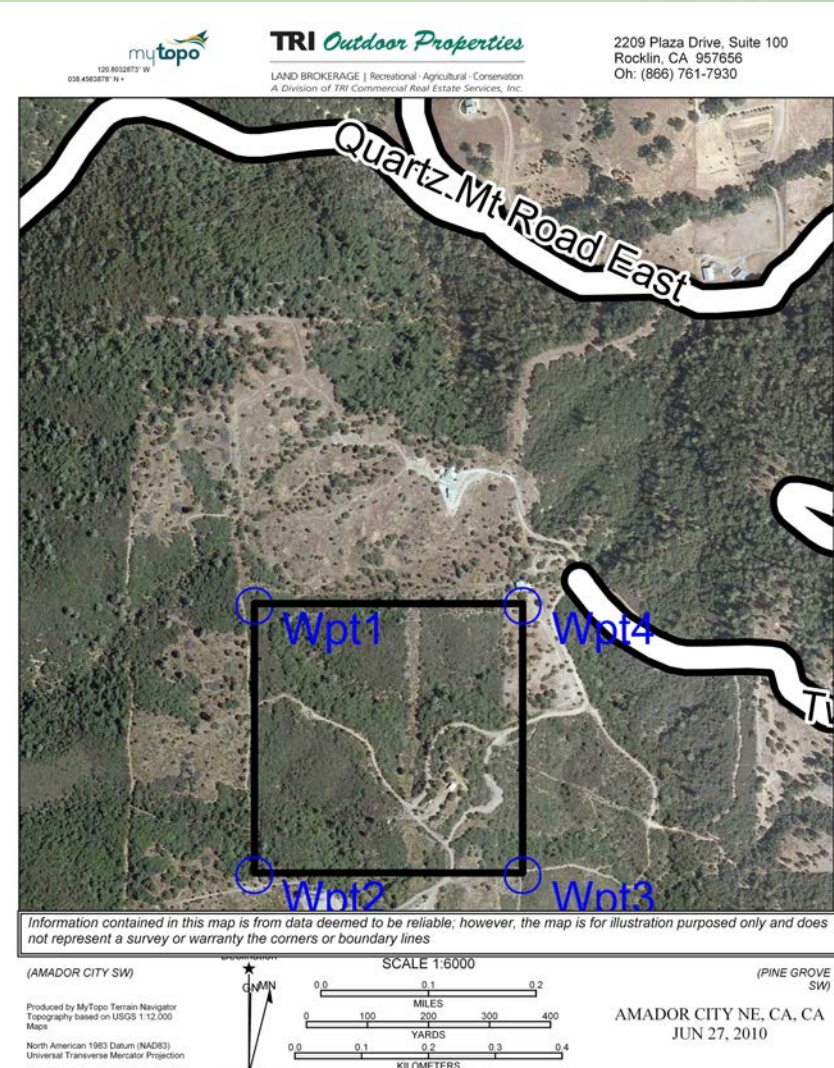
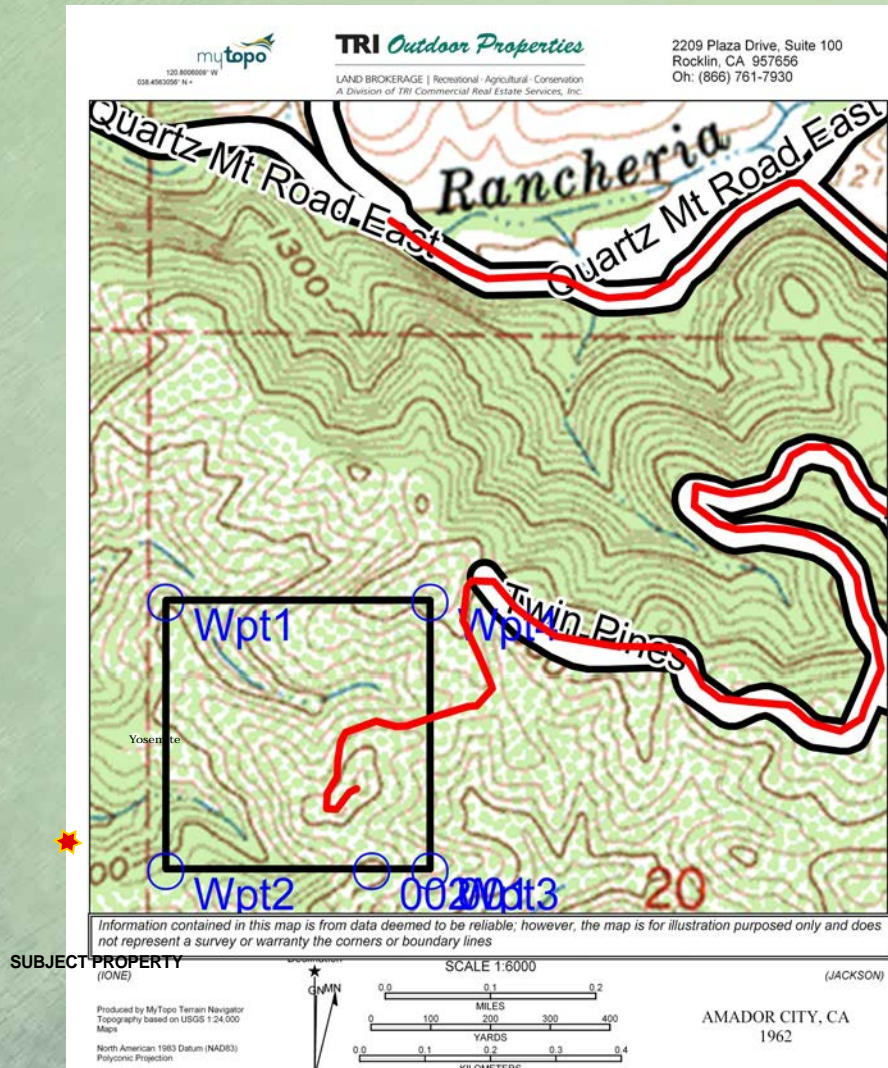
**TRI Outdoor Properties**  
LAND BROKERAGE / Recreational · Agricultural · Conservation  
A Division of TRI Commercial Real Estate  
*Building Great Relationships Between People and the Outdoors*

**SERVING  
NORTHERN & CENTRAL  
CALIFORNIA**



# SUTTER CREEK HILLTOP CABIN

*Great Country Living, Amador County ±40.09 acres*



## TRI Outdoor Properties

LAND BROKERAGE / Recreational · Agricultural · Conservation

A Division of TRI Commercial Real Estate

*Building Great Relationships Between People and the Outdoors*

**SERVING  
NORTHERN & CENTRAL  
CALIFORNIA**



# SUTTER CREEK HILLTOP CABIN

*Great Country Living, Amador County ±40.09 acres*

Home of the California 49'er Gold Rush and Jumping Frog, Mark Twain made Calaveras County California famous worldwide when he wrote of the "Celebrated Jumping Frog of Calaveras County" in 1865.

## TRI Outdoor Properties

LAND BROKERAGE | Recreational · Agricultural · Conservation  
A Division of TRI Commercial Real Estate Services, Inc.

Contact:

**Mike Kuppenbender**, SIOR, CCIM, ALC  
BRE: 00811112

**Olen Zirkle**, ALC  
BRE: 01190000

Tel ^ 866.761.7930

Fax ^ 916.960.5799

2209 Plaza Drive, Suite 100  
Rocklin, CA 95765

[www.trioutdoorproperties.com](http://www.trioutdoorproperties.com)



- Award-Winning Wineries
- Fishing
- Water & Snow Skiing
- Camping
- Bicycling
- Horseback Riding
- And Much More



*The information in this document was obtained from sources we deem reliable; however, no warranty or representation, expressed or implied, is made as to the accuracy of the information contained herein. All information should be verified by the recipient prior to purchase or execution of legal documents.*



## TRI Outdoor Properties

LAND BROKERAGE / Recreational · Agricultural · Conservation

A Division of TRI Commercial Real Estate

*Building Great Relationships Between People and the Outdoors*

SERVING  
NORTHERN & CENTRAL  
CALIFORNIA