

# 231 ac m/l Quality Investment Monroe County, IA

**\$1,258,950**

**\$5450/ac**

**\$49,830**  
**Annual CRP Income**



## GENERAL INFORMATION

Acres	231 ac
Crop Acres	186.41 ac
Topography	Level
Taxes	\$3362/year
on net taxable acres of 232.89	2015/16 payable
School District:	Albia Community

## FSA

Farm #	4083
Tract #	7111
FSA Crop Ac	186.4
CSR on Crop Ac	79.4

## CRP

Enrolled Acres	186.4
Expires	09/30/2025
CRP Payment per Ac	\$267.33
Annual CRP Payment	\$49,830

## RECREATIONAL OPPORTUNITIES

Whitetail Deer  
Turkey



The above information, although believed to be correct, is not warranted or guaranteed by the owner, listing firm or listing agent.

## Hawkeye Farm Mgmt & Real Estate



22 N Main, Albia IA Phone: 641-932-7796  
Email: [hawkeye@uciowa.com](mailto:hawkeye@uciowa.com)  
On the web: [www.uciowa.com](http://www.uciowa.com);  
[www.iowawhitetailfarms.com](http://www.iowawhitetailfarms.com)



**THE "AMMONS" FAMILY**

Ryan-641.777.2955 Alan-641.777.6927 Nate-641.777.2861  
[ryan@uciowa.com](mailto:ryan@uciowa.com) [alan@uciowa.com](mailto:alan@uciowa.com) [nate@uciowa.com](mailto:nate@uciowa.com)

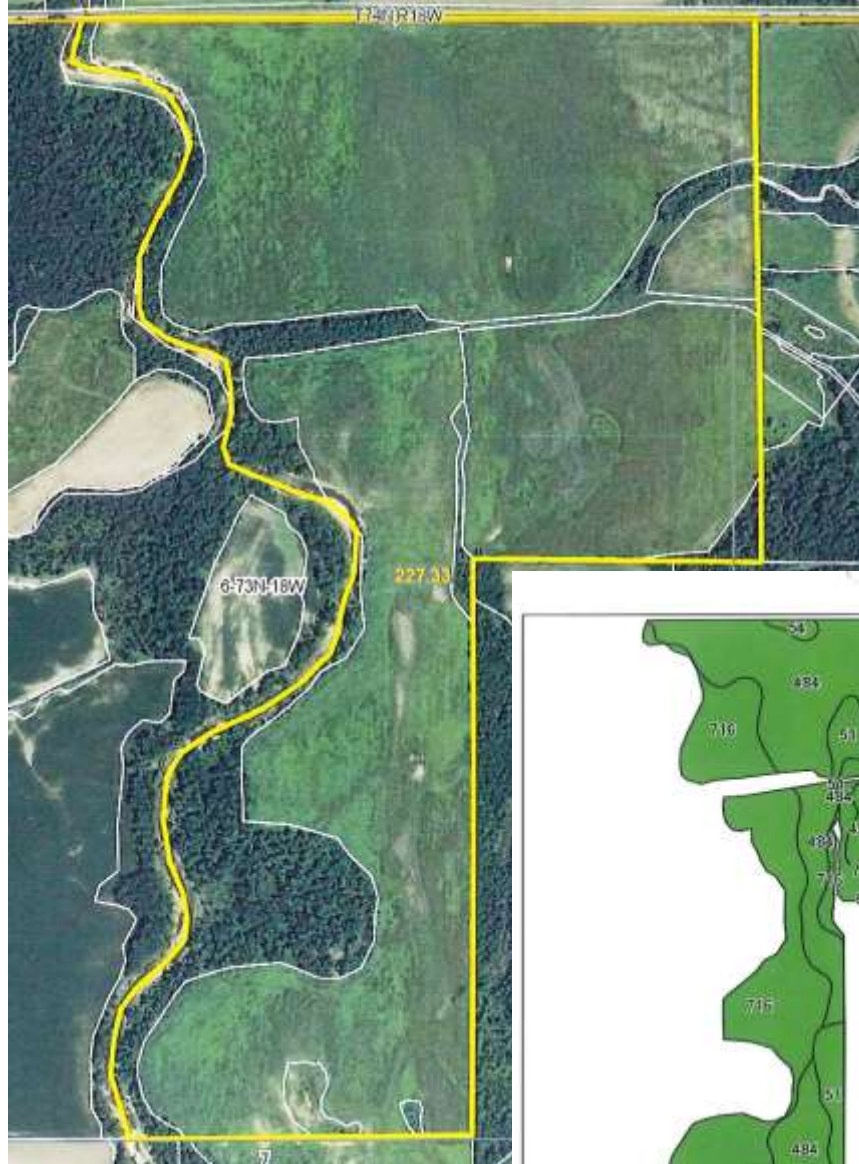
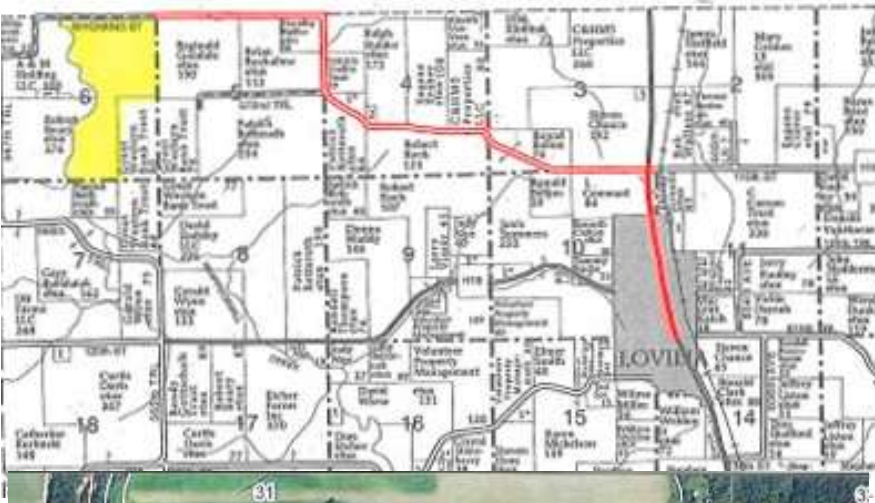
[www.uciowa.com](http://www.uciowa.com)  
[www.iowawhitetailfarms.com](http://www.iowawhitetailfarms.com)



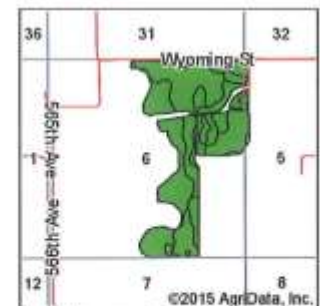
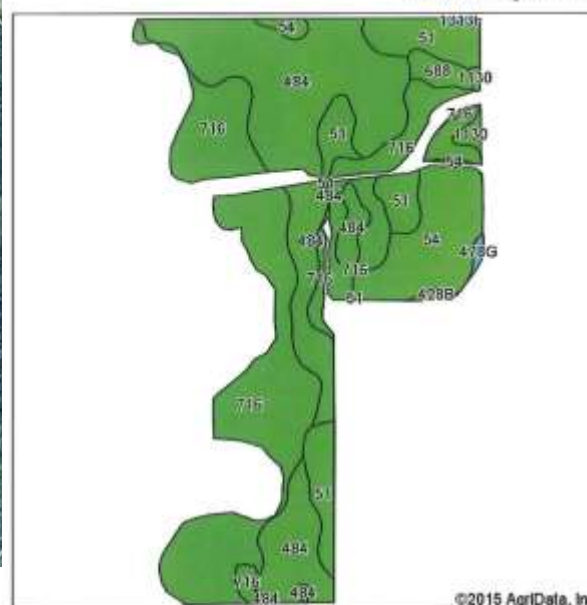
## Hawkeye Farm Mgmt & Real Estate

### DIRECTIONS

From Lovilia, Iowa: Drive north on Hwy 5 for 1 mile, turn west onto 110<sup>th</sup> Street for 2.5 miles. Turn West onto Wyoming Street, drive 1 mile and property begins on the south side of Wyoming St on Level B Road.



### Soils Map-CSR2



State: Iowa  
County: Monroe  
Location: 6-73N-18W  
Township: Union  
Acres: 188.68  
Date: 3/20/2015

Hawkeye Farm Mgmt & Real Estate

United Country Real Estate

Map Provided By:  surety

**LEGAL: 231 Acres m/l in  
Section 6 T-73-N R-18-W  
Union Twp, Monroe  
County IA. Exact Legal  
to come from Abstract.**

Area Symbol: IA135, Soil Area Version: 22						
Code	Soil Description	Acres	Percent of field	**CSR2 Legend	Non-Inv Class	CSR2** CSR
716	Lawson-Quiver-Nodaway complex, 0 to 2 percent slopes, occasionally flooded	70.55	37.4%		llw	76
484	Lawson silt loam, 0 to 2 percent slopes	67.64	36.0%		llw	87 90
51	Vesper silt loam, 0 to 2 percent slopes	21.38	11.3%		llw	74 70
54	Zook silty clay loam, 0 to 2 percent slopes	20.15	10.7%		llw	68 75
688	Koszta silt loam, 0 to 2 percent slopes	2.96	1.6%		I	88 85
832C2	Weller silty clay loam, benches, 5 to 8 percent slopes, moderately eroded	2.91	1.5%		lls	60 40
1130	Belinda silt loam, benches, 0 to 2 percent slopes	1.48	0.8%		llw	76 63
478G	Munster-Rock outcrop complex, 14 to 40 percent slopes	0.58	0.3%		Vlls	5 5
428B	Ely silty clay loam, 2 to 5 percent slopes	0.40	0.3%		lls	87 88
1313F	Munster silt loam, 18 to 25 percent slopes	0.26	0.1%		Vlls	5 5
Weighted Average						79.4