



READY-TO-GO FAMILY FARM— A MUST SEE!



- ♦ *13 acres of rolling open pasture with a nice double wide home (will subdivide)*
- ♦ *Located in WSD at 5076 Martinsville Rd, Wesson, MS*
- ♦ *840' of Road frontage, Ponds, Fenced, and many more improvements*
- ♦ *Priced only @ \$115,000.00 , call me for details TODAY!*



G.W. Stewart, REALTOR®
gwstewart@4cornerprop.com
601.757.3009 cell
601-510-9446 efax

4 Corner Properties, LLC (4CP)
77 Hwy 84E
Brookhaven, MS 39601
601-952-2828 office

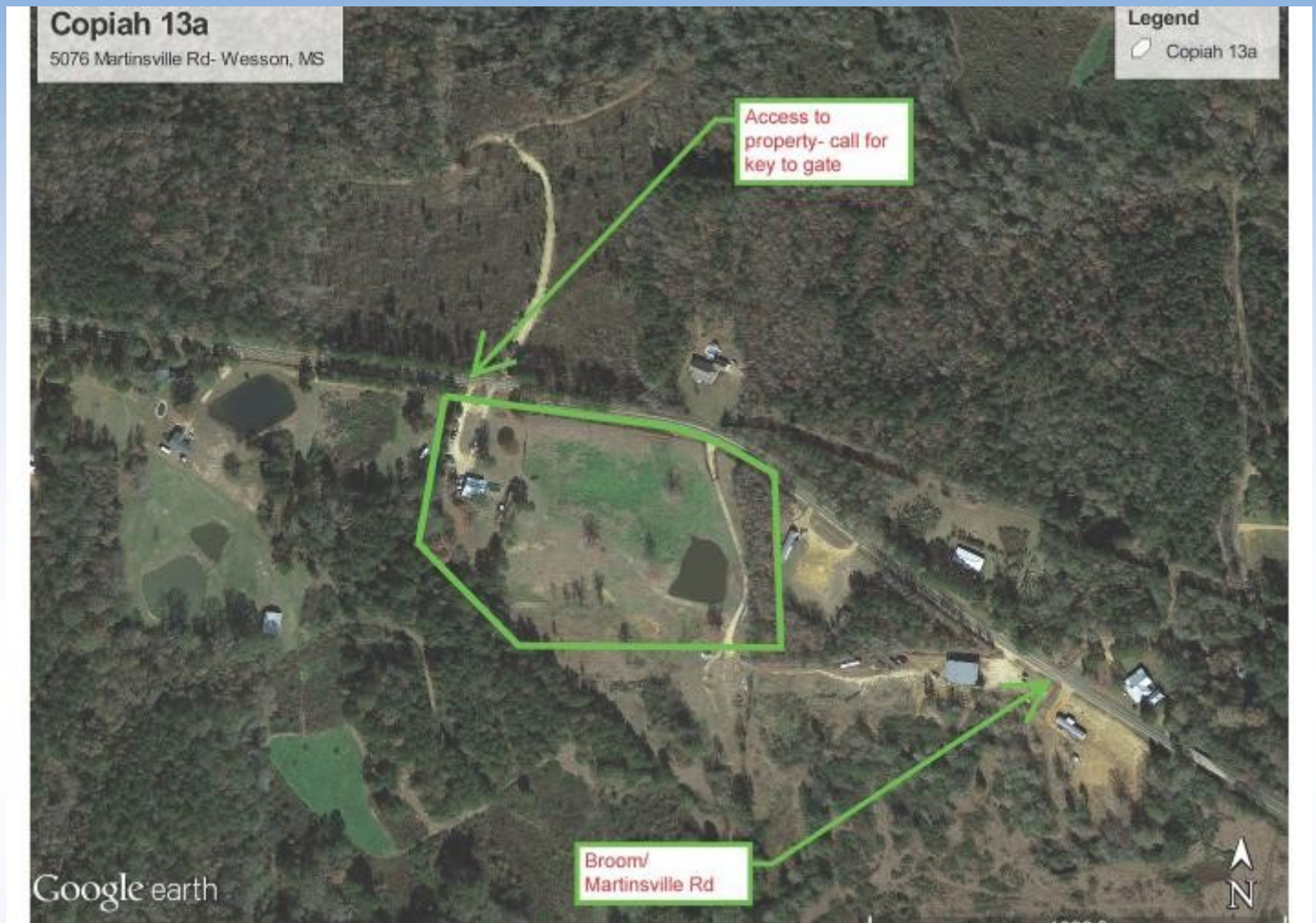
Visit us online at 4cplandandhomes.com











G.W. Stewart, REALTOR®
gwstewart@4cornerprop.com
601.757.3009 cell
601-510-9446 efax

4 Corner Properties, LLC (4CP)
77 Hwy 84 E
Brookhaven, MS 39601
601-952-2828 office

Visit us online at 4cplandandhomes.com