

LA - Catahoula Tom 48 acres

+/-
46.93 Acres
\$138,500

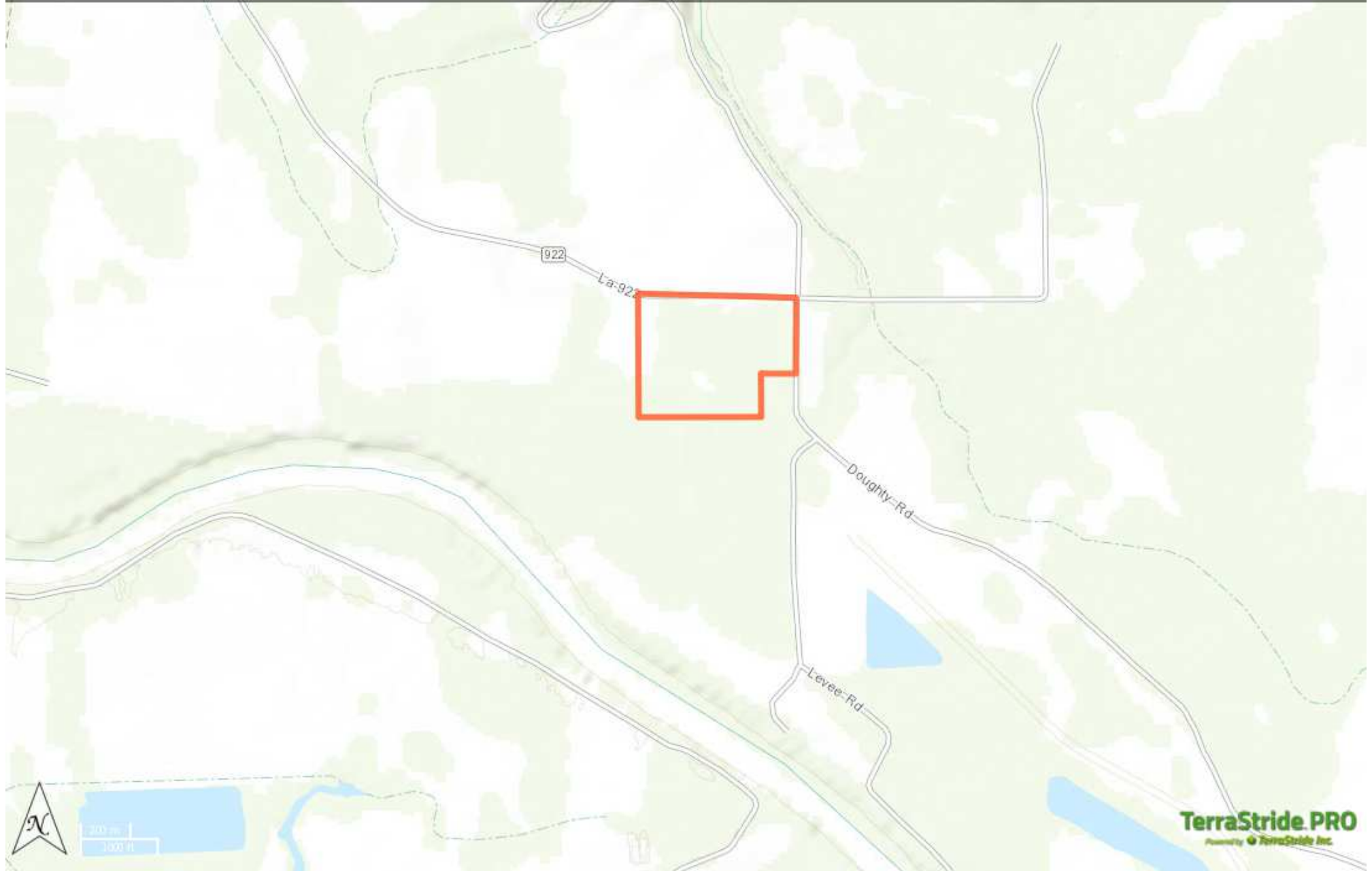
Brown Realty Co

Mike Cater

31877586701

mcater@brownrealtyco.com

<http://www.brownrealtyco.com/>



Property Report—LA - Catahoula Tom 48 acres +/-

Legend

Feature	Icon	Colors
Boundary		

Description

Small CRP tract located near Harrisonburg on Doty Rd. Has paved road on two sides with utilities nearby. Protected from backwater flooding with district levee. Contains levee easement, which assists with access, hunting, and may provide limited grazing. Has stocked ponds for limited fishing that could be enhanced. Adjoins large wooded area with good deer herd. Also has residential possibilities. Brown Realty Co Jerry Brown, Broker 2189 Hwy 425 Rayville, LA 71269 318-728-9544

DISCLAIMER: The information contained herein is as obtained by this broker from sellers, owners, or other sources. This information is considered reliable, neither this broker nor owners make any guarantee, warranty or representation as to correctness of any data or descriptions and the accuracy of such statements. The correctness and / or accuracy of any and all statements should be determined through independent investigation made by the prospective purchaser. Any offer for sale is subject to prior sale, errors and omissions, change of price, terms or other conditions or withdrawal from sale

Generated on: Sept. 30, 2015