



Selling Texas a Little at a Time

Stunning Home on 10.72 Acres



11905 FM 2657

Kempner, TX 76539

\$555,000

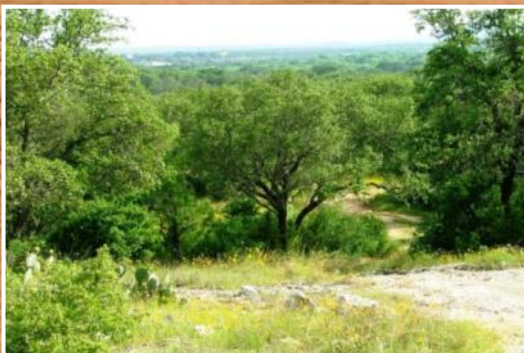
Text 'PROPID 375606' to 46786

GORE REAL ESTATE GROUP

2424 E. Main Street, Gatesville, TX 76528

254-248-0809 ~ 254-206-0915

www.GoreGroupTexas.com



**Additional 100 Acres
Available**





Property Information Overview

Acreage.....	10.72
Location.....	11905 FM 2657, Kempner, TX 76539
Price.....	\$499,000
Exterior Features.....	Large Patio, 2100 sq ft 30'x 70' Workshop, 16' x 18' Shed, Hot-Tub, Large Covered Porch, Fantastic Views
Trees.....	Live Oak & Cedar
Taxes w/out Exemptions....	\$7,703
Distance from Houston.....	220
Distance from Austin.....	60
Distance from Dallas.....	175

Details of Home

Sq. Ft.....	4,000
Bedrooms.....	4
Bathrooms	3.5
Additional Features.....	Walk-in Closets, Multiple Living Rooms, Custom Features

Directions: From Coryell County Court House: Head west on E Main Street, turn left onto FM 116 S, continue for 24 miles, then turn left onto W Avenue D.

Turn right onto US-190 W. After 2.8 miles, turn left onto FM 2657, continue for 6 miles. Property will be on your left. Wait until after you cross the Burnet County line to use street addresses as your guide for finding the property.



Elegant Detailing

High Ceilings

First-Rate Construction





**30' x 70'
Workshop with
Water and
Electricity**

Great Views



**16' x 18'
Shed**



Topographical Map

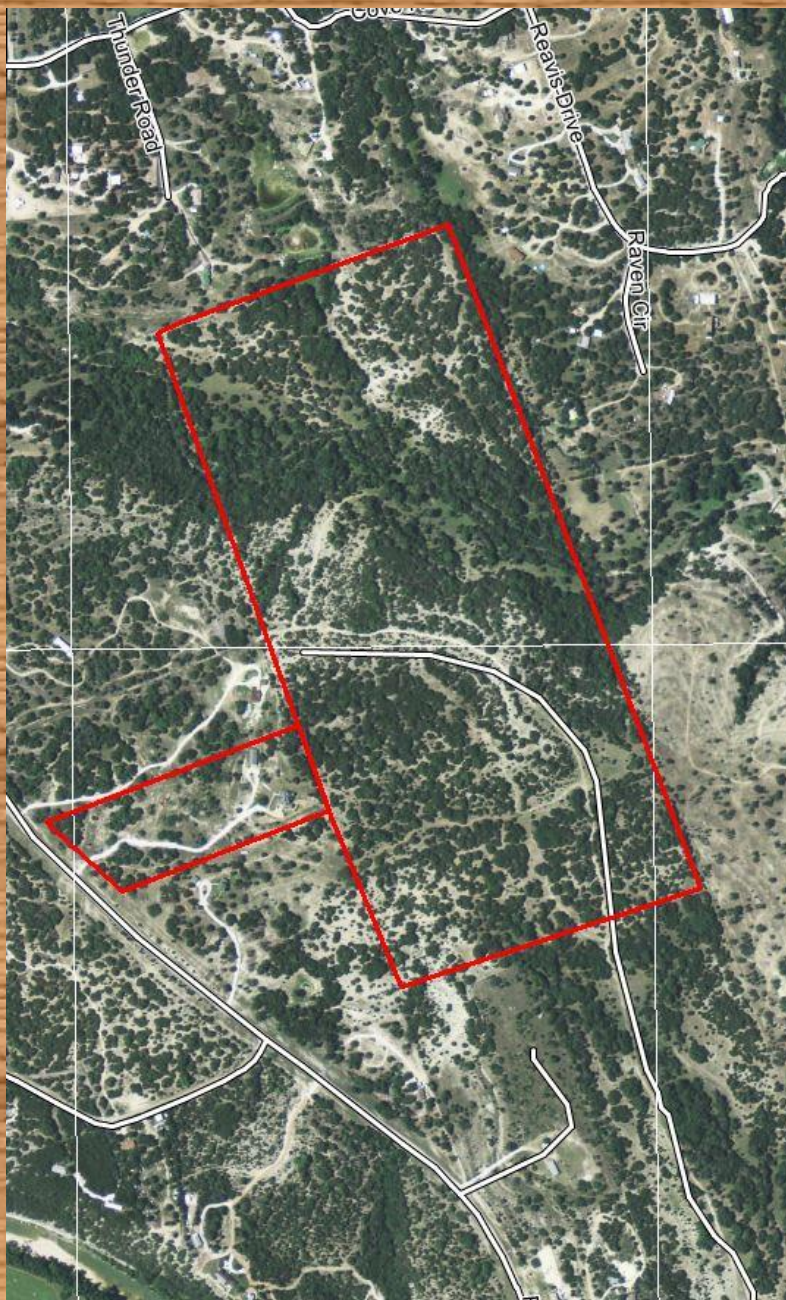


Aerial Map



Boundary Lines Are An Approximation And Are Not Exact

Aerial with 100 Additional Acres



Boundary Lines Are An Approximation And Are Not Exact



FOR MORE INFORMATION ON
THIS LISTING, PLEASE CONTACT
KIM GORE, BROKER

CELL: 254-206-0915

kim@goregrouptexas.com

DISCLAIMER

Broker and/or Agent does not make any representations, warranties or covenants of any kind or character, whether expressed or implied, with respect to the quality or condition of the property, the suitability of the property for any and all activities and uses which purchaser may conduct there on, compliance by the property with any laws, rules, ordinances or regulations if any applicable governmental authority, or habitability, merchantability, or fitness for any particular purpose. All drawings are neither legally recorded maps nor surveys and are not intended to be used as such. The information contained herein has been obtained from sources deemed reliable. However, we cannot warrant the complete accuracy thereof subject to errors, omissions, change of price, rental or other conditions, prior to sale, lease or financing, or withdrawal without notice. Broker and/or Agent does not make any representation regarding hazardous waste, as defined by the Texas Solid Waste Disposal Act and the regulations adopted there under, or the United States Environmental Protection Agency regulations or disposal or any other hazardous or toxic substance in or on the property; or the Endangered Species Act of 1973; or for live oak decline, oak wilt, or any other natural phenomena.



2424 E MAIN ST.,
GATESVILLE, TX 76528
www.GoreGroupTexas.com