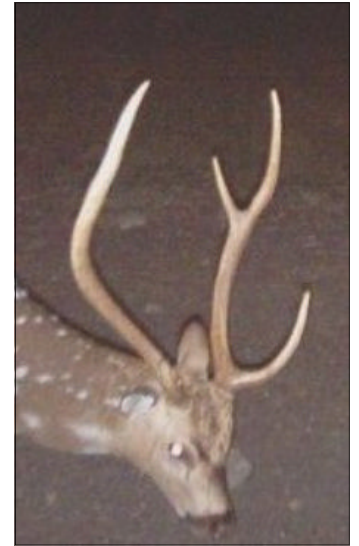




**Rockin' P Ranch**

**235.7 Acres**

**Edwards County, TX**



Located in North Central Edwards County      Strong water well      Electricity in place  
Gentle Rolling to Sloping, Live Oak Covered Terrain      Moderate to Heavy Cover  
Heavily Covered Draw through Middle of Property Allowing Sanctuary for Wildlife  
Large Earthen Pond      Water Line & Watering Troughs Located Throughout Ranch  
Blinds & Top of the line Feeders      3 Large Food Plot Areas in Various Locations  
Trophy Whitetail, Axis, Blackbuck, Turkey, Hog  
Highly Improved Road System throughout Property  
Motor Home      8'x40' Sea Container      20'x40' Pole Barn  
Mineral Rights to be determined by Title Commitment  
Ag Exempt Taxes      Best Hunting Edwards County has to Offer!  
\$469,950      (listing #254)



**Western Hill Country Realty**  
[glynn@westernhillcountryrealty.com](mailto:glynn@westernhillcountryrealty.com)

**Glynn Hendley: Broker**  
[www.westernhillcountryrealty.com](http://www.westernhillcountryrealty.com)

**830-683-4435**

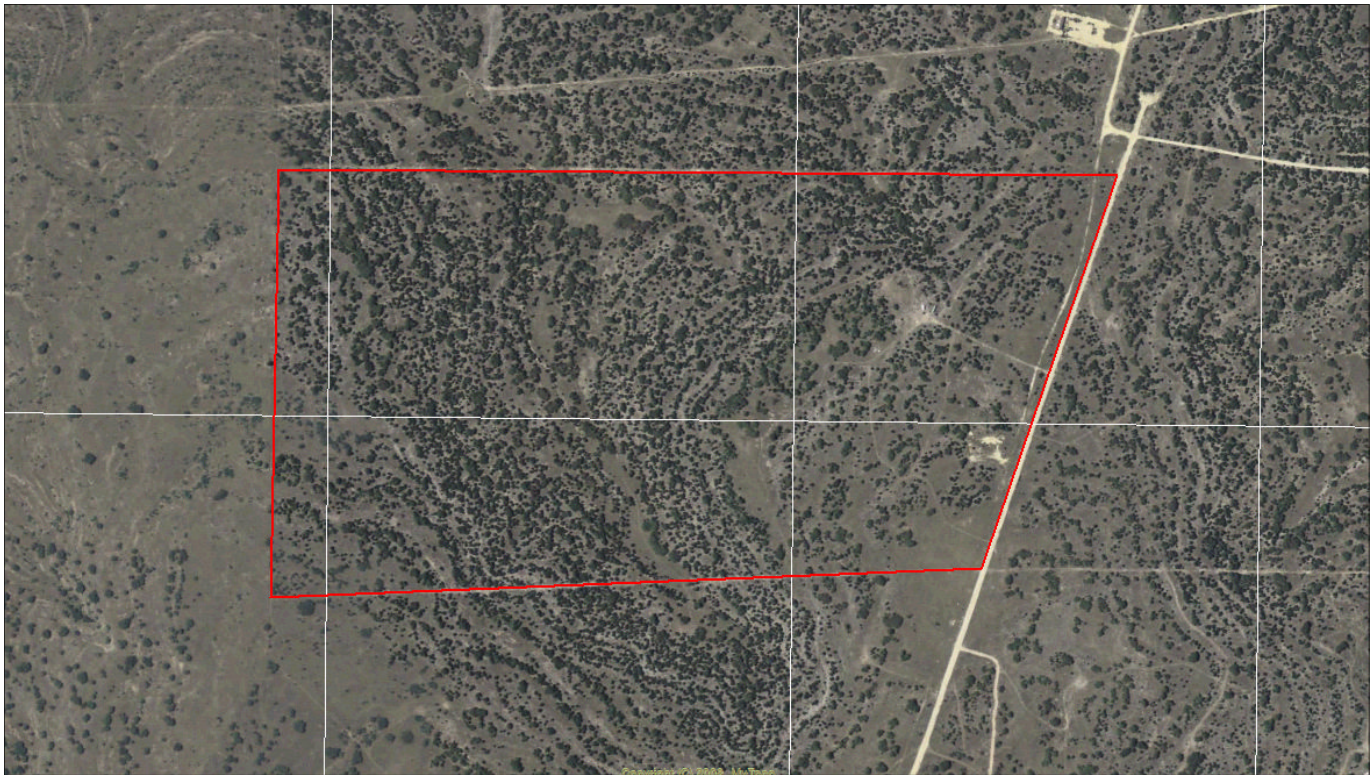




**Rockin' P Ranch**

**235.7 Acres**

**Edwards County, TX**



**Western Hill Country Realty**

**glynn@westernhillcountryrealty.com**

**Glynn Hendley: Broker**

**www.westernhillcountryrealty.com**

**830-683-4435**





**Rockin' P Ranch**

**235.7 Acres**

**Edwards County, TX**



**Western Hill Country Realty**

**glynn@westernhillcountryrealty.com**

**Glynn Hendley: Broker**

**www.westernhillcountryrealty.com**

**830-683-4435**

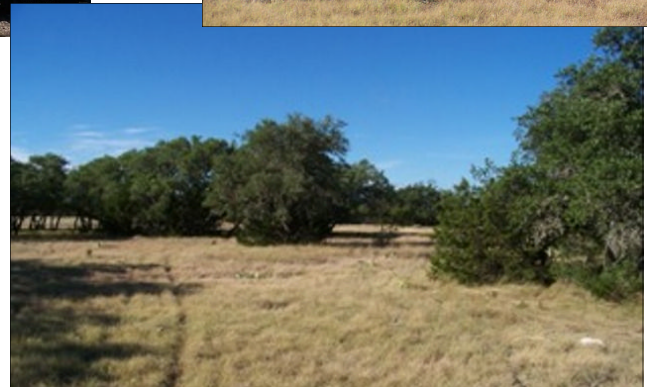




**Rockin' P Ranch**

**235.7 Acres**

**Edwards County, TX**



**Western Hill Country Realty**

**[glynn@westernhillcountryrealty.com](mailto:glynn@westernhillcountryrealty.com)**

**Glynn Hendley: Broker**

**[www.westernhillcountryrealty.com](http://www.westernhillcountryrealty.com)**

**830-683-4435**