



Comanche Valley Ranch 528.11 Acres Edwards County, TX



Located in West Central Edwards County Great Access
Rolling Hills and Large Fertile Valleys with Abundant Live Oaks
Large Low Fenced Neighbors
Two Water Wells Electricity Septic
Main lodge is a 2014 model 1280sqft 3/2 manufactured home in "like new condition"
12x80 metal covers on the front and rear
384sqft Main Bunk House with full bath
Additional 10'x16' Bunk House with ½ bath
Bunk Houses Situated on Top of Hill with Spectacular Views
480sqft Equipment Shed 8'x20' Storage Container
All weather skinning/processing area with walk-in cooler
Improved Internal Road System allowing Access to All Parts of Property
95% of the property boundary is driveable via new roads
Watering Troughs and Header Pond
Dirt tank that makes for a great dove hunting spot
Whitetail, Turkey, Hogs, Trophy Axis, Aoudad, Elk
First Class Blinds 7 Top of the Line feeders Exempt Taxes
Set up & Ready to Enjoy! \$975,000 Listing #505



Western Hill Country Realty

glynn@westernhillcountryrealty.com

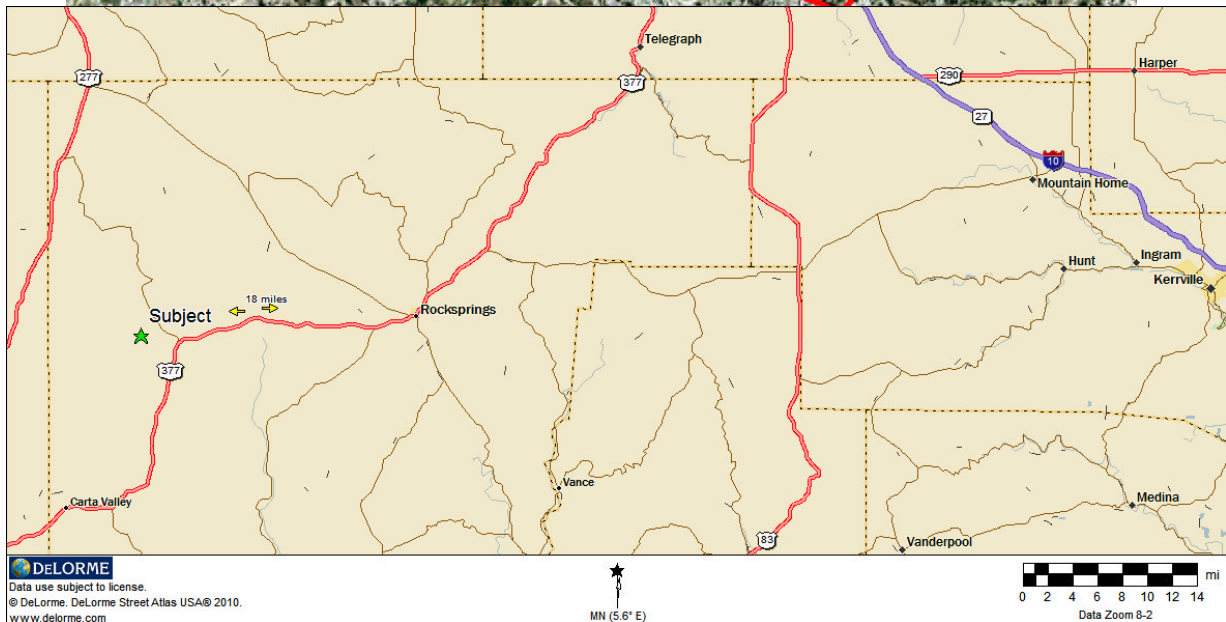
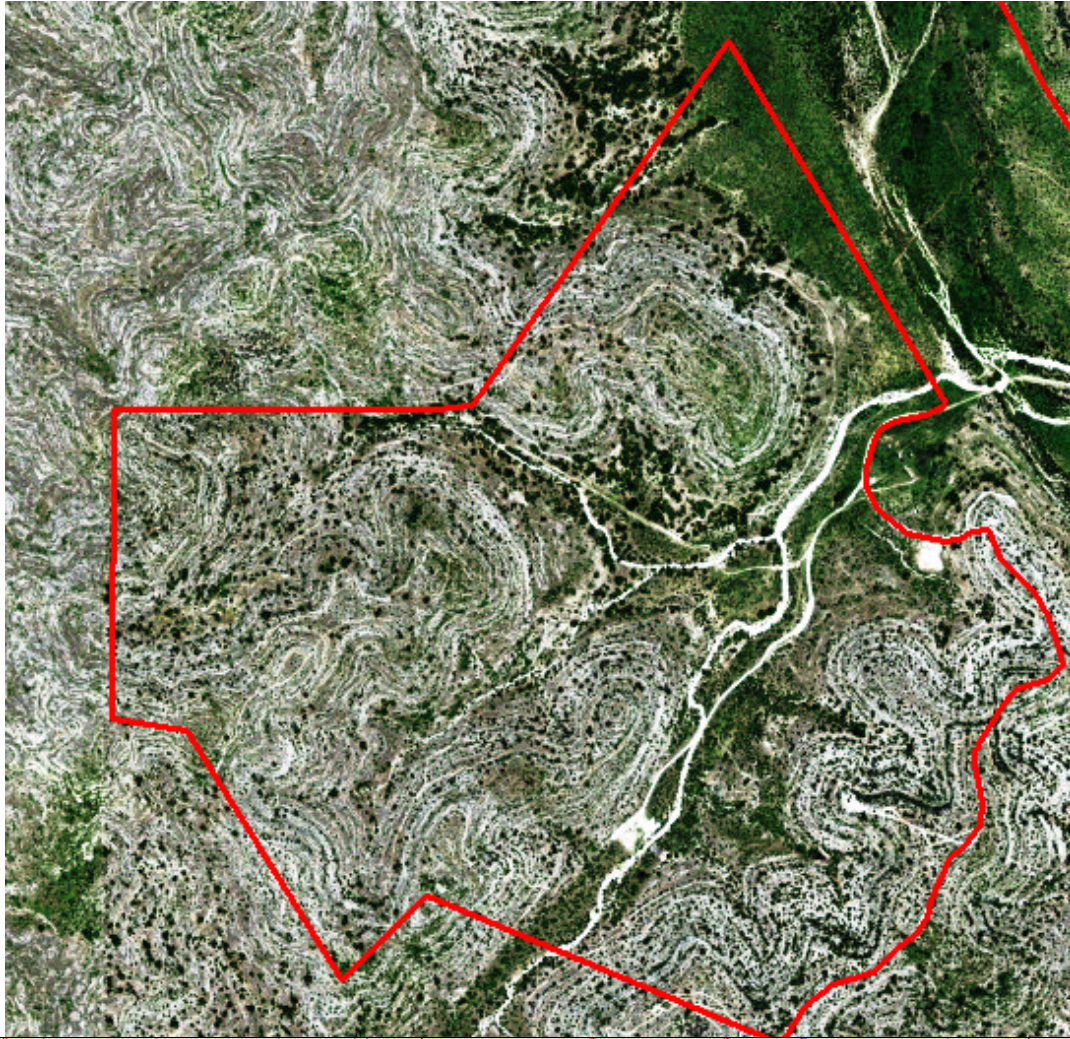
Glynn Hendley: Broker

www.westernhillcountryrealty.com

830-683-4435



Comanche Valley Ranch 528.11 Acres Edwards County, TX



Western Hill Country Realty
glynn@westernhillcountryrealty.com

Glynn Hendley: Broker
www.westernhillcountryrealty.com

830-683-4435



Comanche Valley Ranch 528.11 Acres Edwards County, TX

