

# FOR SALE

## 73 Acres MOL

### Cultivated & Pasture Land

Lott, Falls County, TX 76656

# \$227,294

For a virtual tour and investment offering go to: [www.texasfarmandranchrealty.com](http://www.texasfarmandranchrealty.com)



Morgan Tindle 254-721-9615 (mobile)

254-803-5263 (LAND)

Bob Dube 512-423-6670 (mobile)

[morgan@texasfarmandranchrealty.com](mailto:morgan@texasfarmandranchrealty.com)

[www.texasfarmandranchrealty.com](http://www.texasfarmandranchrealty.com)

**FOR  
SALE**

## **73 Acres MOL - Cultivated & Pasture Land Lott, Falls County, TX 76656**

### **Property Highlights**

**Location** – The property is located on CR 403 in Lott, Texas . At the intersection of Hwy 320 and Hwy 77 head south on Hwy 77 for 0.3 mile and turn left onto Falls Road. Travel 0.3 mile to Travis RD/ CR 403 and take a right. The property is 1.5 miles on the right look for the Texas Farm and Ranch Realty sign.

**Acres** – 73 acres MOL survey will have to be performed to determine exact acreage. Property has approximately 1016 linear feet of road frontage on County Road 403.

**Improvements**- Partially in Coastal Bermuda. There are several places for a beautiful home site.

**Water** – There is not a water meter on the property. Tri- County Water services the southern area and Stillhouse Water services the northern area. There is a tank on the property.

**Electricity** – There is not an electric meter on the property. Heart of Texas Electric services the area.

**Soil** – There are various soil types on the property. Please refer to the USDA Soil Map located in this brochure for soil types.

**Minerals** – The seller will convey all owned minerals and executory rights. Seller is not exactly sure what percentage of minerals are owned, or if past oil lease is still in effect. So Buyer will need to perform its due diligence to determine exact ownership.

**Topography** – The land is flat with multiple locations for a home site.

**Current Use** – Privately owned and is used for cattle grazing.

**Ground Cover** – Property has been planted in oats for winter grazing of cattle. Along the perimeter as well as around the tank area is in Coastal Bermuda.

**Easements** – An abstract of title will need to be performed to determine all easements that may exist. Easements known are for utility.

**Showings** - By appointment only. If applicable, buyers who are represented by an agent/broker must have its agent/broker present at all showings to participate in any co-brokerage commissions.

**Price** - \$227,294.00- \$3114.00 an acre



Morgan Tindle 254-721-9615 (mobile)

254-803-5263 (LAND)

Bob Dube 512-423-6670 (mobile)

morgan@texasfarmandranchrealty.com

www.texasfarmandranchrealty.com



**FOR  
SALE**

## **73 Acres MOL - Cultivated & Pasture Land Lott, Falls County, TX 76656**

### **Property Pictures**



**Morgan Tindle 254-721-9615 (mobile)**

**254-803-5263 (LAND)**

**Bob Dube 512-423-6670 (mobile)**

**[morgan@texasfarmandranchrealty.com](mailto:morgan@texasfarmandranchrealty.com)**

**[www.texasfarmandranchrealty.com](http://www.texasfarmandranchrealty.com)**



**FOR  
SALE**

## **73 Acres MOL - Cultivated & Pasture Land Lott, Falls County, TX 76656**

### **Property Aerial View**



**Morgan Tindle    254-721-9615 (mobile)**

**254-803-5263 (LAND)**

**Bob Dube    512-423-6670 (mobile)**

**[morgan@texasfarmandranchrealty.com](mailto:morgan@texasfarmandranchrealty.com)**

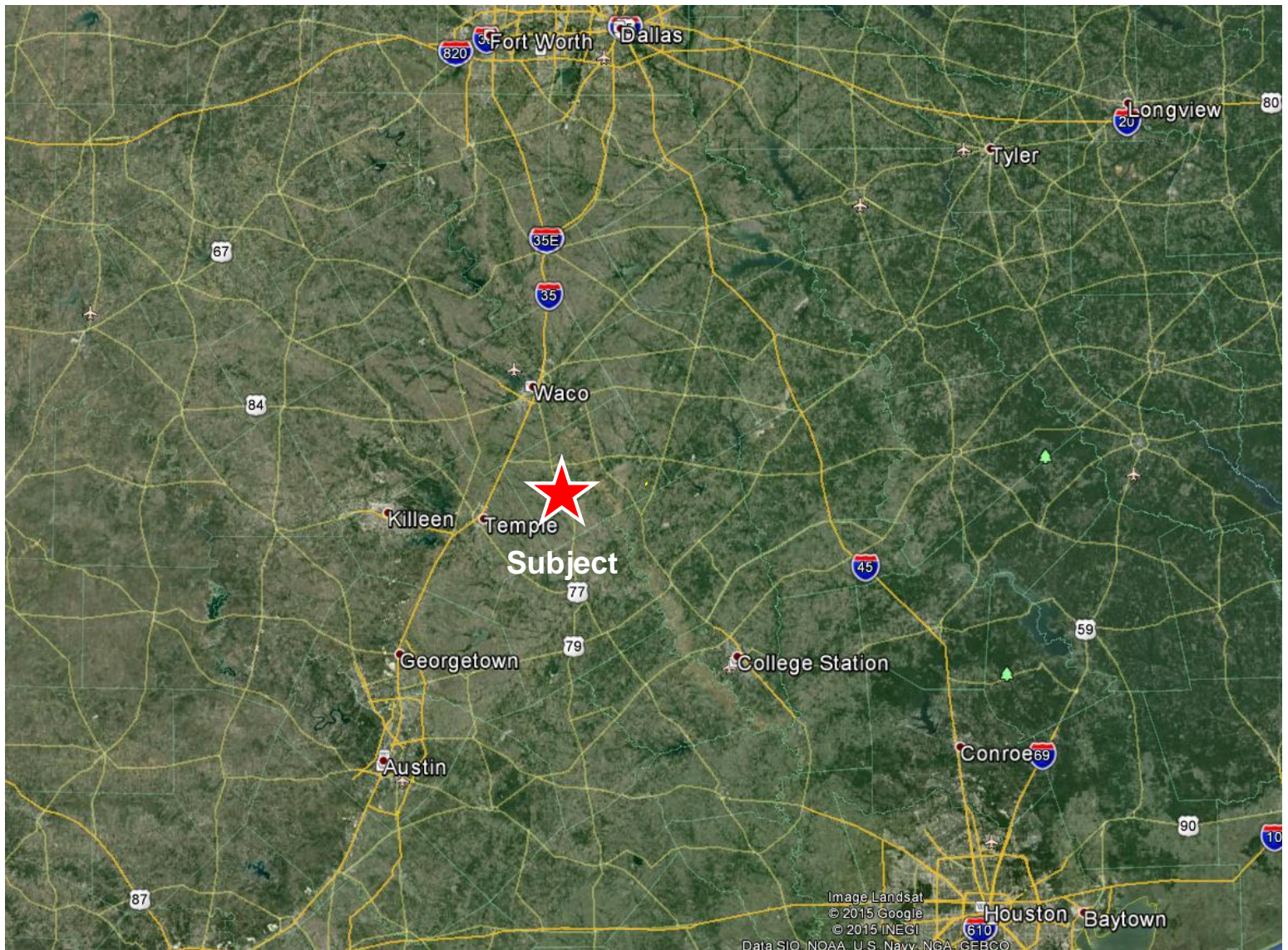
**[www.texasfarmandranchrealty.com](http://www.texasfarmandranchrealty.com)**



**FOR  
SALE**

## **73 Acres MOL - Cultivated & Pasture Land Lott, Falls County, TX 76656**

### **Property Location Relative to DFW, Austin and Houston**

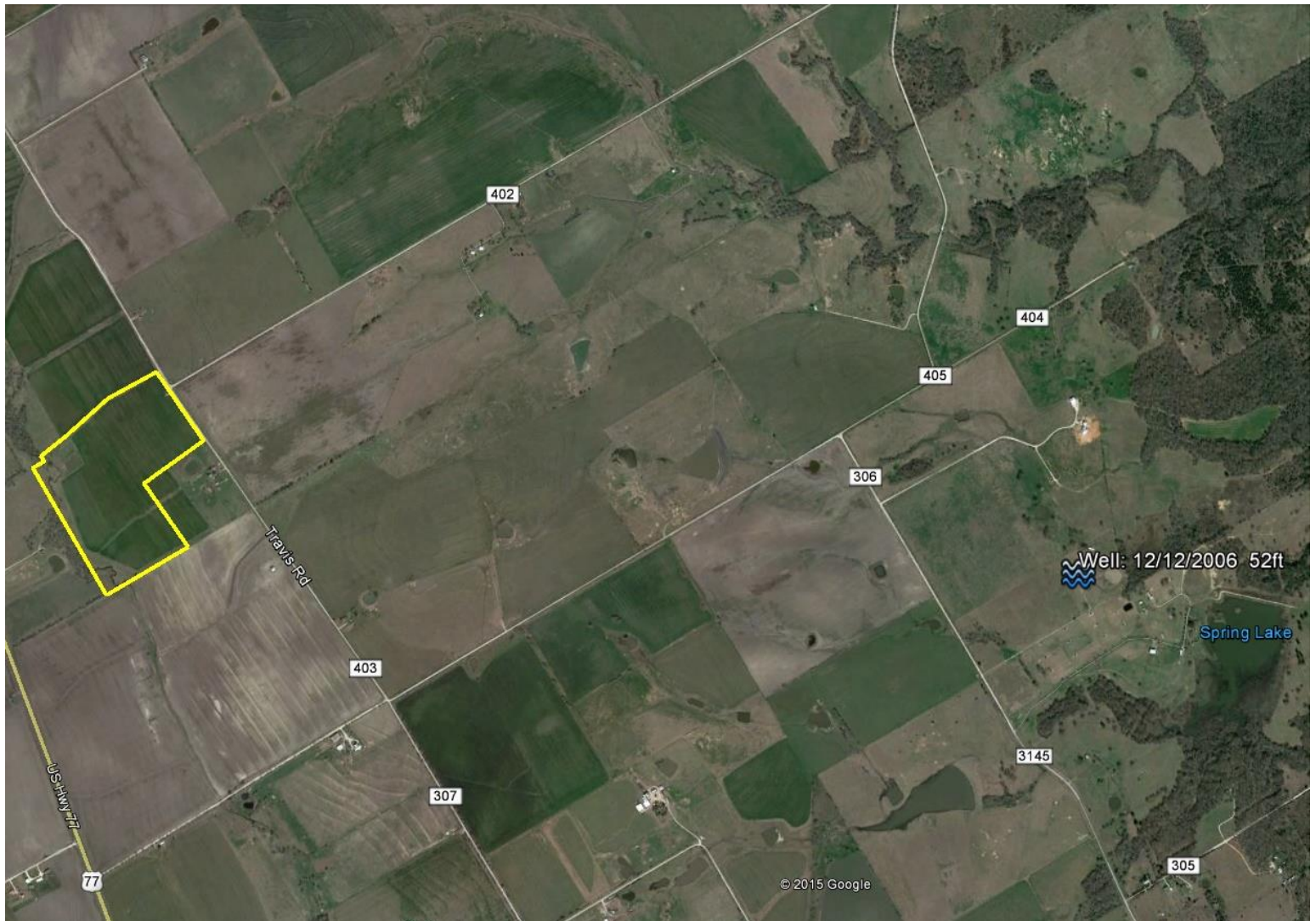




**FOR  
SALE**

## **73 Acres MOL - Cultivated & Pasture Land Lott, Falls County, TX 76656**

### **Aerial of Water Well Nearest Property**



—“Stewards of Land”—  
A DBA of Dube's Commercial, Inc. TREC# 484723

Morgan Tindle 254-721-9615 (mobile)

254-803-5263 (LAND)

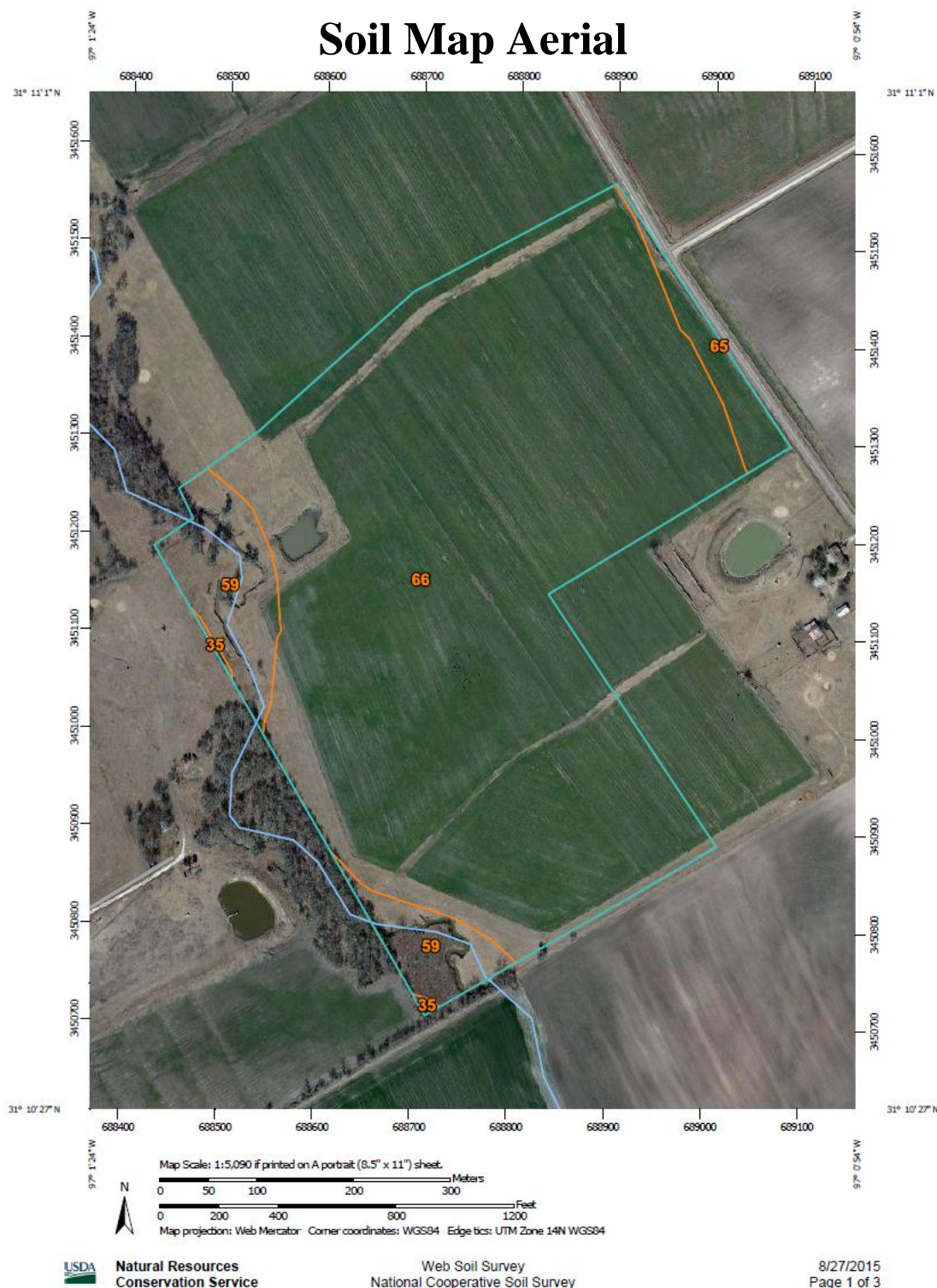
Bob Dube 512-423-6670 (mobile)

[morgan@texasfarmandranchrealty.com](mailto:morgan@texasfarmandranchrealty.com)

[www.texasfarmandranchrealty.com](http://www.texasfarmandranchrealty.com)

**FOR  
SALE**

# 73 Acres MOL - Cultivated & Pasture Land Lott, Falls County, TX 76656



— "Stewards of Land" —  
A DBA of Dube's Commercial, Inc. TREC# 484723

**Morgan Tindle 254-721-9615 (mobile)**

**254-803-5263 (LAND)**

**Bob Dube 512-423-6670 (mobile)**

**morgan@texasfarmandranchrealty.com**

**www.texasfarmandranchrealty.com**

**FOR  
SALE**

## **73 Acres MOL - Cultivated & Pasture Land Lott, Falls County, TX 76656**

### **Soil Type Legend**

Falls County, Texas (TX145)			
Map Unit Symbol	Map Unit Name	Acres in AOI	Percent of AOI
35	Houston Black clay, 1 to 3 percent slopes	0.1	0.2%
59	Tinn clay, frequently flooded	6.9	9.5%
65	Wilson silty clay loam, 0 to 1 percent slopes	1.9	2.7%
66	Wilson silty clay loam, 1 to 3 percent slopes	64.0	87.7%
Totals for Area of Interest		72.9	100.0%



~"Stewards of Land"  
A DBA of Dube's Commercial, Inc. TREC# 484723

**Morgan Tindle    254-721-9615 (mobile)**

**254-803-5263 (LAND)**

**Bob Dube    512-423-6670 (mobile)**

**morgan@texasfarmandranchrealty.com    www.texasfarmandranchrealty.com**



**FOR  
SALE**

## **73 Acres MOL - Cultivated & Pasture Land Lott, Falls County, TX 76656**

### **Soil Type – 35**

**35—Houston Black clay, 1 to 3 percent slopes.** This deep, moderately well drained, gently sloping soil is on smooth ridges on foot slopes of uplands. Slopes are convex. Areas are long and narrow to broad in shape and range from 10 to 50 acres in size.

The soil has a surface layer of very dark gray, moderately alkaline clay to a depth of 28 inches. The next layer is dark gray, moderately alkaline clay to a depth of 48 inches. Between depths of 48 and 67 inches is olive gray, moderately alkaline clay. The underlying layer, to a depth of 80 inches, is olive yellow and light brownish gray, moderately alkaline clay that has brownish yellow mottles.

This soil is difficult to work. When wet, it is sticky; when dry, it is hard and clods when plowed. Dense plowpan layers are common in cultivated areas. Permeability is very slow, and available water capacity is high. The root zone is deep, but penetration by roots is slow. Runoff is medium. The hazard of water erosion is moderate.

Included with this soil in mapping are small areas of Branyon, Burleson, and Heiden soils. The Branyon soils are on stream terraces. The Burleson and Heiden soils have no particular pattern of occurrence. The included soils make up 10 to 20 percent of this map unit.

This soil is used mainly for crops. The potential for growing crops is high. Cotton and grain sorghum are the main crops, but corn and small grain are also grown. The main objectives of management are controlling erosion and improving tilth. Growing crops that produce large amounts of residue or growing deep-rooted legumes help control erosion and maintain the tilth.

This soil has high potential for pasture. It is well suited to improved bermudagrass, kleingrass, and King Ranch bluestem. Proper pasture management includes fertilization, weed control, and controlled grazing.

This soil has high potential for range, but very few acres are used for this purpose. The climax plant community is tall grasses and an overstory of a few large live oak, elm, and hackberry trees along the drainageways.

This soil has low potential for most urban uses. Its most restrictive limitations are shrinking and swelling with changes in moisture, corrosivity to uncoated steel, low strength, and slow percolation.

The potential for recreation is low. The clayey surface layer and the very slow permeability are the most restrictive limitations for this use. Potential for both openland and rangeland wildlife habitat is medium. Capability subclass IIe; Blackland range site.



—“Stewards of Land”—  
A DBA of Dube’s Commercial, Inc. TREC# 484723

**Morgan Tindle    254-721-9615 (mobile)**

**254-803-5263 (LAND)**

**Bob Dube    512-423-6670 (mobile)**

**[morgan@texasfarmandranchrealty.com](mailto:morgan@texasfarmandranchrealty.com)    [www.texasfarmandranchrealty.com](http://www.texasfarmandranchrealty.com)**

**FOR  
SALE**

## **73 Acres MOL - Cultivated & Pasture Land Lott, Falls County, TX 76656**

### **Soil Type – 59**

**59—Trinity clay, frequently flooded.** This deep, somewhat poorly drained, nearly level soil is on flood plains of minor streams. It is flooded two or three times a year; flooding lasts from several hours to one day. These areas have plane to slightly concave slopes of 0 to 1 percent. The areas are in long, narrow bands paralleling the stream channel. Individual areas are 50 to about 500 acres in size.

The soil has a surface layer of dark gray, moderately alkaline clay about 47 inches thick. Between depths of 47 and 67 inches is gray, moderately alkaline clay. The underlying layer, to a depth of 80 inches, is olive gray, moderately alkaline clay.

Permeability is very slow, and available water capacity is high. The root zone is deep, but the clayey material restricts root penetration. Runoff is very slow. The hazard of water erosion is slight.

Included with this soil in mapping are a few areas of Trinity soils that are not flooded annually. Also included are a few intermingled areas of Ovan and Gowen soils. The included soils make up about 10 to 20 percent of this map unit.

This soil has low potential for production of crops, recreation, and urban uses. It is limited for this use by flooding, which can be overcome only by major flood control. The clayey surface layer also restricts some urban and recreation uses.

This soil has high potential for pasture. It is well suited to improved bermudagrass, common bermudagrass, johnsongrass, and kleingrass. Proper management includes fertilization, weed control, and controlled grazing.

This soil has medium potential for range production. The climax plant community is a mixture of tall and mid grasses and an overstory of oak, elm, hackberry, cottonwood, and black willow trees adjacent to the stream.

This soil has medium potential for both openland and rangeland wildlife habitat. Capability subclass Vw; Clayey Bottomland range site.



—“Stewards of Land”  
A DBA of Dube’s Commercial, Inc. TREC# 484723

**Morgan Tindle    254-721-9615 (mobile)**

**254-803-5263 (LAND)**

**Bob Dube    512-423-6670 (mobile)**

**[morgan@texasfarmandranchrealty.com](mailto:morgan@texasfarmandranchrealty.com)    [www.texasfarmandranchrealty.com](http://www.texasfarmandranchrealty.com)**



**FOR  
SALE**

## **73 Acres MOL - Cultivated & Pasture Land Lott, Falls County, TX 76656**

### **Soil Type – 65**

**65—Wilson silty clay loam, 0 to 1 percent slopes.** This deep, somewhat poorly drained, nearly level soil is on uplands and ancient stream terraces. Slopes are plane. Areas range from 20 to 200 acres in size.

This soil has a surface layer of dark gray, mildly alkaline silty clay loam about 6 inches thick. Below the surface layer, to a depth of 25 inches, is dark gray, mildly alkaline clay. Between depths of 25 and 39 inches is gray, mildly alkaline clay. Below this layer, to a depth of 58 inches, is light gray, moderately alkaline clay that has light yellowish brown mottles. The underlying layer, to a depth of 80 inches, is light olive gray, moderately alkaline clay that has yellowish brown mottles (fig. 10).

This soil is difficult to work because of surface crusts and dense plowpan layers that form in cultivated areas. When dry, this soil is extremely hard; when wet, it is sticky and plastic. Permeability is very slow, and available water capacity is high. The root zone is deep, but root penetration is slow and difficult in the underlying layers. Runoff is slow. The hazard of water erosion is slight.

Included with this soil in mapping are a few intermingled areas of Burleson, Crockett, and Normangee soils. The included soils make up about 10 to 20 percent of this map unit.

This soil has medium potential for production of crops. The major crops are grain sorghum, cotton, hay, and some small grain for winter grazing. The objectives of management are improving tilth and maintaining fertility. Growing crops that produce large amounts of residue and legumes helps maintain tilth.

This soil has medium potential for pasture. It is well suited to coastal bermudagrass, King Ranch bluestem, and weeping lovegrass. Pasture management needed includes fertilization, weed control, and controlled grazing.

This soil has medium potential for range. The climax plant community is a mixture of tall and mid grasses and an overstory of a few live oak, elm, and hackberry trees along streams and in occasional motts.

This soil has low potential for most urban uses. Its most restrictive limitation is shrinking and swelling with changes in moisture, occasional wetness, low strength, corrosivity to uncoated steel, and slow percolation. The potential for recreation is medium. Wetness and the very slow permeability are the most restrictive limitations for this use. Potential for both openland and rangeland wildlife habitat is medium. Capability subclass IIIw; Claypan Prairie range site.



— "Stewards of Land" —  
A DBA of Dube's Commercial, Inc. TREC# 484723

**Morgan Tindle    254-721-9615 (mobile)**

**254-803-5263 (LAND)**

**Bob Dube    512-423-6670 (mobile)**

**morgan@texasfarmandranchrealty.com    www.texasfarmandranchrealty.com**

**FOR  
SALE**

## **73 Acres MOL - Cultivated & Pasture Land Lott, Falls County, TX 76656**

### **Soil Type – 66**

**66—Wilson silty clay loam, 1 to 3 percent slopes.** This deep, somewhat poorly drained, gently sloping soil is on uplands and ancient stream terraces. Slopes are plane or slightly concave. Areas range from 15 to 150 acres in size.

The soil has a surface layer of very dark gray, mildly alkaline silty clay loam about 6 inches thick. Below the surface, to a depth of 28 inches, is dark gray, mildly alkaline clay. Between depths of 28 and 55 inches is gray, mildly alkaline clay. The underlying layer, to a depth of 80 inches, is light brownish gray, moderately alkaline clay that has brownish yellow mottles.

This soil is difficult to work because of surface crusts and dense plowpan layers that form in cultivated areas. When dry, this soil is extremely hard; when wet, it is sticky and gummy. Permeability is very slow, and available water capacity is high. The root zone is deep, but root penetration is slow and difficult in the underlying layers. Runoff is medium. The hazard of water erosion is moderate.

Included with this soil in mapping are a few intermingled areas of Burleson, Crockett, and Normangee soils. Also included are a few areas of eroded Wilson soils. The included soils make up about 10 to 20 percent of this map unit.

This soil has medium potential for production of crops, but it is limited for this use by surface crusting and rapid loss of soil moisture during the summer. The major crops are grain sorghum, cotton, and small grain for winter grazing. The major objectives of management are controlling erosion, maintaining fertility, and improving tilth. Growing crops that produce large amounts of residue or growing deep-rooted legumes help to control erosion and maintain tilth.

This soil has medium potential for pasture. It is well suited to coastal bermudagrass, King Ranch bluestem, and weeping lovegrass. Needed pasture management includes fertilization, weed control, and controlled grazing.

This soil has medium potential for range. The climax plant community is a mixture of tall and mid grasses and an overstory of a few live oak, elm, and hackberry trees along streams and occasionally in motts.

This soil has low potential for most urban uses. Its most restrictive limitations are shrinking and swelling with changes in moisture, occasional wetness, low strength, corrosivity to uncoated steel, and slow percolation. The potential for recreation is medium. Occasional wetness and the very slow permeability are the most restrictive limitations for this use. Potential for both openland and rangeland wildlife habitat is medium. Capability subclass IIIe; Claypan Prairie range site.



—“Stewards of Land”  
A DBA of Dube’s Commercial, Inc. TREC# 484723

**Morgan Tindle    254-721-9615 (mobile)**

**254-803-5263 (LAND)**

**Bob Dube    512-423-6670 (mobile)**

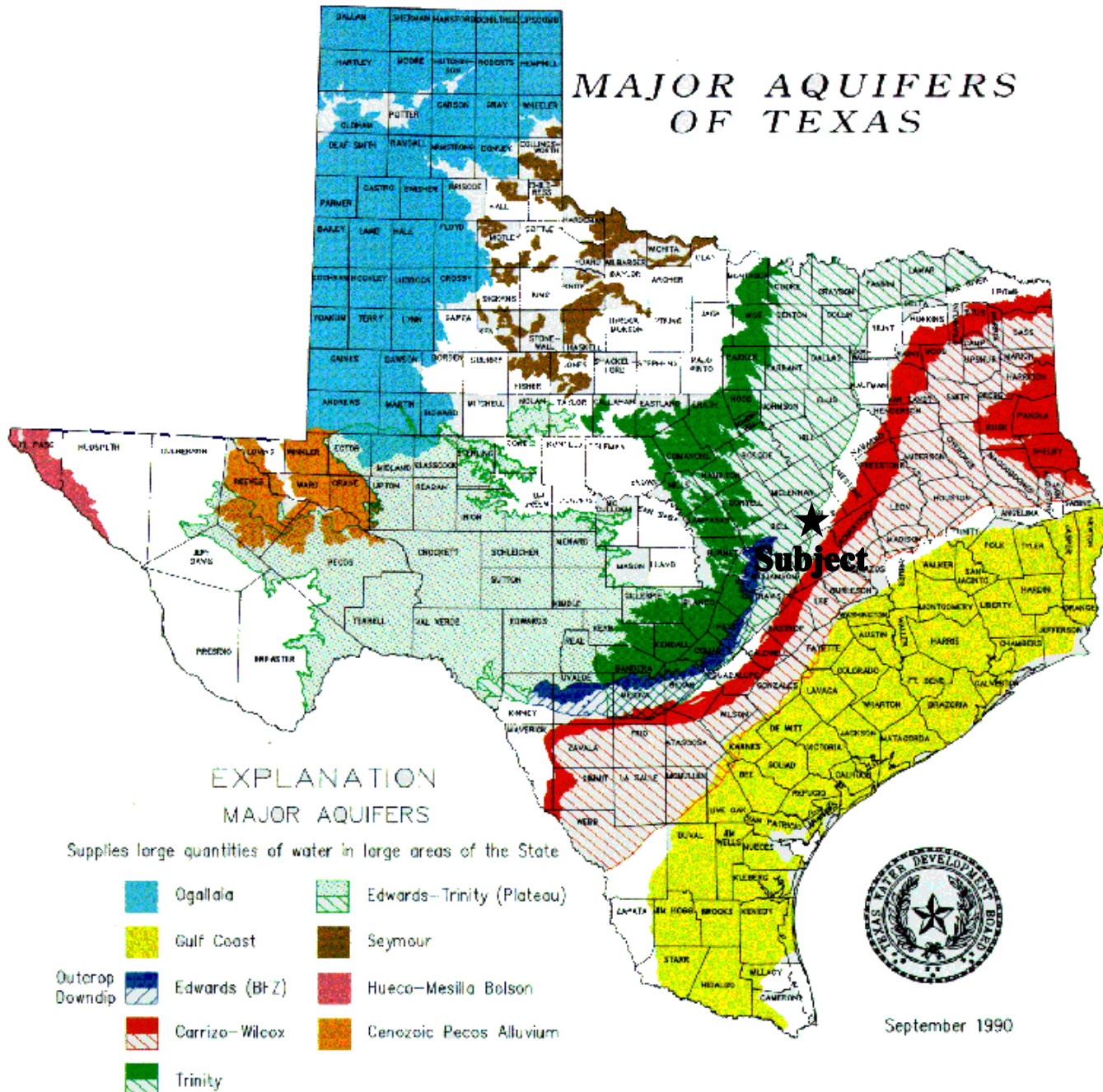
**morgan@texasfarmandranchrealty.com    www.texasfarmandranchrealty.com**



**FOR  
SALE**

## 73 Acres MOL - Cultivated & Pasture Land Lott, Falls County, TX 76656

### Property Location to Major Aquifers of Texas



**TEXAS**  
FARM & RANCH REALTY

—“Stewards of Land”—  
A DBA of Dube's Commercial, Inc. TREC# 484723

Morgan Tindle 254-721-9615 (mobile)

254-803-5263 (LAND)

Bob Dube 512-423-6670 (mobile)

[morgan@texasfarmandranchrealty.com](mailto:morgan@texasfarmandranchrealty.com) [www.texasfarmandranchrealty.com](http://www.texasfarmandranchrealty.com)





**FOR  
SALE**

## **73 Acres MOL - Cultivated & Pasture Land Lott, Falls County, TX 76656**

### **CONFIDENTIALITY & DISCLAIMER**

The information contained in the following Investment Brochure is proprietary and strictly confidential. It is intended to be reviewed only by the party receiving it from Dube's Commercial, Inc., DBA Texas Farm and Ranch Realty and should not be made available to any other person or entity without the written consent of Dube's Commercial, Inc., DBA Texas Farm and Ranch Realty. This Investment Brochure has been prepared to provide summary information to prospective investors, and to establish only a preliminary level of interest in the subject property. The information contained herein is not a substitute for a thorough due diligence investigation. Dube's Commercial, Inc., DBA Texas Farm and Ranch Realty makes no warranty or representation, with respect to the income or expenses for the subject property, the future projected financial performance of the property, the size and square footage of the property and improvements, the presence or absence of contaminating substances, PCB's or asbestos, the compliance with State and Federal regulations, the physical condition of the improvements thereon, or the financial condition or business prospects, or any buyer's plans or intentions to continue its ownership of the subject property. The information contained in this Investment Brochure has been obtained from sources we believe to be reliable; however, Dube's Commercial, Inc., DBA Texas Farm and Ranch Realty makes no warranty or representation whatsoever regarding the accuracy or completeness of the information provided.



— "Stewards of Land"  
A DBA of Dube's Commercial, Inc. TREC# 484723

**Morgan Tindle    254-721-9615 (mobile)**

**254-803-5263 (LAND)**

**Bob Dube    512-423-6670 (mobile)**

**[morgan@texasfarmandranchrealty.com](mailto:morgan@texasfarmandranchrealty.com)    [www.texasfarmandranchrealty.com](http://www.texasfarmandranchrealty.com)**



## Information About Brokerage Services

**B**efore working with a real estate broker, you should know that the duties of a broker depend on whom the broker represents. If you are a prospective seller or landlord (owner) or a prospective buyer or tenant (buyer), you should know that the broker who lists the property for sale or lease is the owner's agent. A broker who acts as a subagent represents the owner in cooperation with the listing broker. A broker who acts as a buyer's agent represents the buyer. A broker may act as an intermediary between the parties if the parties consent in writing. A broker can assist you in locating a property, preparing a contract or lease, or obtaining financing without representing you. A broker is obligated by law to treat you honestly.

### IF THE BROKER REPRESENTS THE OWNER:

The broker becomes the owner's agent by entering into an agreement with the owner, usually through a written - listing agreement, or by agreeing to act as a subagent by accepting an offer of subagency from the listing broker. A subagent may work in a different real estate office. A listing broker or subagent can assist the buyer but does not represent the buyer and must place the interests of the owner first. The buyer should not tell the owner's agent anything the buyer would not want the owner to know because an owner's agent must disclose to the owner any material information known to the agent.

### IF THE BROKER REPRESENTS THE BUYER:

The broker becomes the buyer's agent by entering into an agreement to represent the buyer, usually through a written buyer representation agreement. A buyer's agent can assist the owner but does not represent the owner and must place the interests of the buyer first. The owner should not tell a buyer's agent anything the owner would not want the buyer to know because a buyer's agent must disclose to the buyer any material information known to the agent.

### IF THE BROKER ACTS AS AN INTERMEDIARY:

A broker may act as an intermediary between the parties if the broker complies with The Texas Real Estate License Act. The broker must obtain the written consent of each party to the transaction to act as an

intermediary. The written consent must state who will pay the broker and, in conspicuous bold or underlined print, set forth the broker's obligations as an intermediary. The broker is required to treat each party honestly and fairly and to comply with The Texas Real Estate License Act. A broker who acts as an intermediary in a transaction:

(1) shall treat all parties honestly;

(2) may not disclose that the owner will accept a price less than the asking price unless authorized in writing to do so by the owner;

(3) may not disclose that the buyer will pay a price greater than the price submitted in a written offer unless authorized in writing to do so by the buyer; and

(4) may not disclose any confidential information or any information that a party specifically instructs the broker in writing not to disclose unless authorized in writing to disclose the information or required to do so by The Texas Real Estate License Act or a court order or if the information materially relates to the condition of the property.

With the parties' consent, a broker acting as an intermediary between the parties may appoint a person who is licensed under The Texas Real Estate License Act and associated with the broker to communicate with and carry out instructions of one party and another person who is licensed under that Act and associated with the broker to communicate with and carry out instructions of the other party.

**If you choose to have a broker represent you**, you should enter into a written agreement with the broker that clearly establishes the broker's obligations and your obligations. The agreement should state how and by whom the broker will be paid. You have the right to choose the type of representation, if any, you wish to receive. Your payment of a fee to a broker does not necessarily establish that the broker represents you. If you have any questions regarding the duties and responsibilities of the broker, you should resolve those questions before proceeding.

Real estate licensee asks that you acknowledge receipt of this information about brokerage services for the licensee's records.

Buyer, Seller, Landlord or Tenant

Date

Texas Real Estate Brokers and Salespersons are licensed and regulated by the Texas Real Estate Commission (TREC). If you have a question or complaint regarding a real estate licensee, you should contact TREC at P.O. Box 12188, Austin, Texas 78711-2188, 512-936-3000 (<http://www.trec.texas.gov>)

(TAR-2501) 10-10-11

TREC No. OP-K

Dube's Commercial Inc 401 Congress Austin, TX 78701  
Phone: (512)423-6670

Fax: (512)671-8011

Robert Dube

Untitled

Produced with ZipForm® by zipLogix 18070 Fifteen Mile Road, Fraser, Michigan 48026 [www.zipLogix.com](http://www.zipLogix.com)