

263 ac m/l in Marion County, IA

3 Bedroom Home, Pole Shed, Recreational Land

\$890,400



GENERAL INFORMATION

MLS #17395

Sale Acres	263 ac m/l
Square Feet Main	1102
Basement	550 finished
Lot Dimensions	5 acres m/l Subject to survey.
Type	Single Family Ranch
Bedrooms 3	Bathrooms 1.75
Porch	16 x 6.8 open front porch
Deck	Partial wrap: 30 x 42 x 10
Heating	Forced Air/Propane
Cooling	Central Air
Water	Rural Water
Sewer	Septic
Zoning	Agricultural
Topography	Rolling to Steep
Taxes	\$2338 (2015/16 payable)
School District:	Twin Cedars
Pole Building	50 x 104 Built in 1981
School District	Twin Cedars
CRP	75.4 ac
CRP Income	\$5,731 annually; expires 2017

KEY FEATURES & RECREATIONAL OPPORTUNITIES:

Modest Income	Mixed Terrain
Timber	Open Hay Ground
CRP Native Grasses	Potential Food Plots
Whitetail Deer	Turkey
Ponds & Creek	Hiking
Trails	ATV
Horseback Riding	



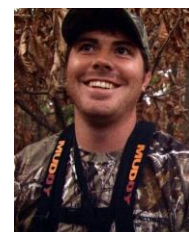
The above information, although believed to be correct, is not warranted or guaranteed by the owner, listing firm or listing agent.



**Hawkeye
Farm Mgmt &
Real Estate**

22 N Main, Albion IA Ph: 641-932-7796
Email: hawkeye@uciowa.com
On the web: www.uciowa.com
or www.iowawhitetailfarms.com

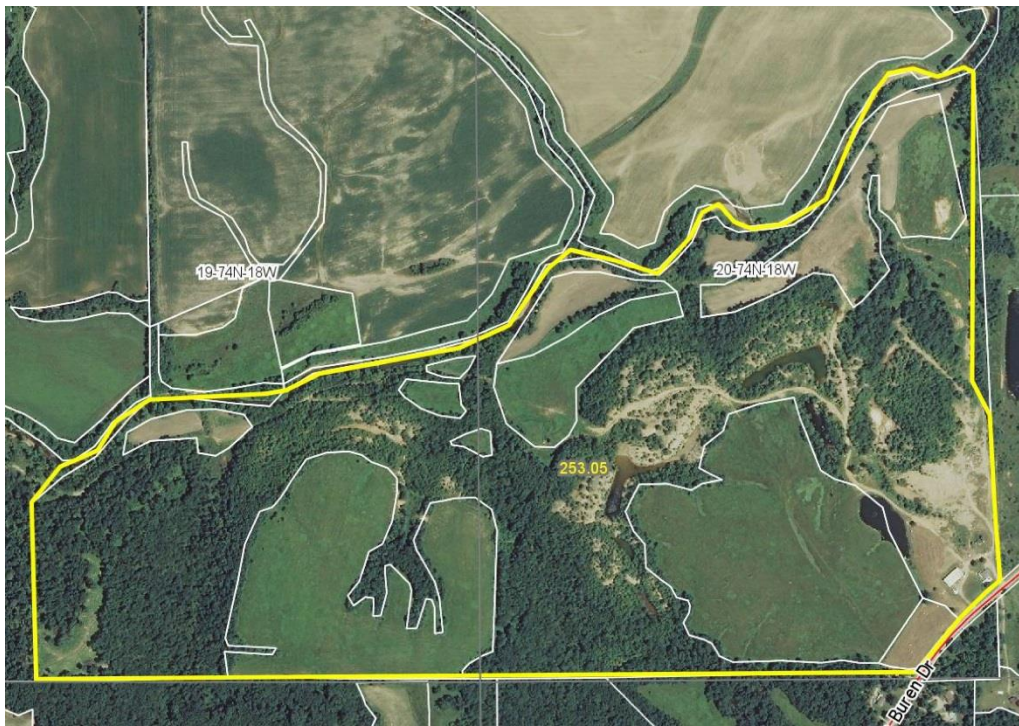
"Serving Southern Iowa & Northern Missouri"



Nate Ammons
® Realtor
641-777-2861



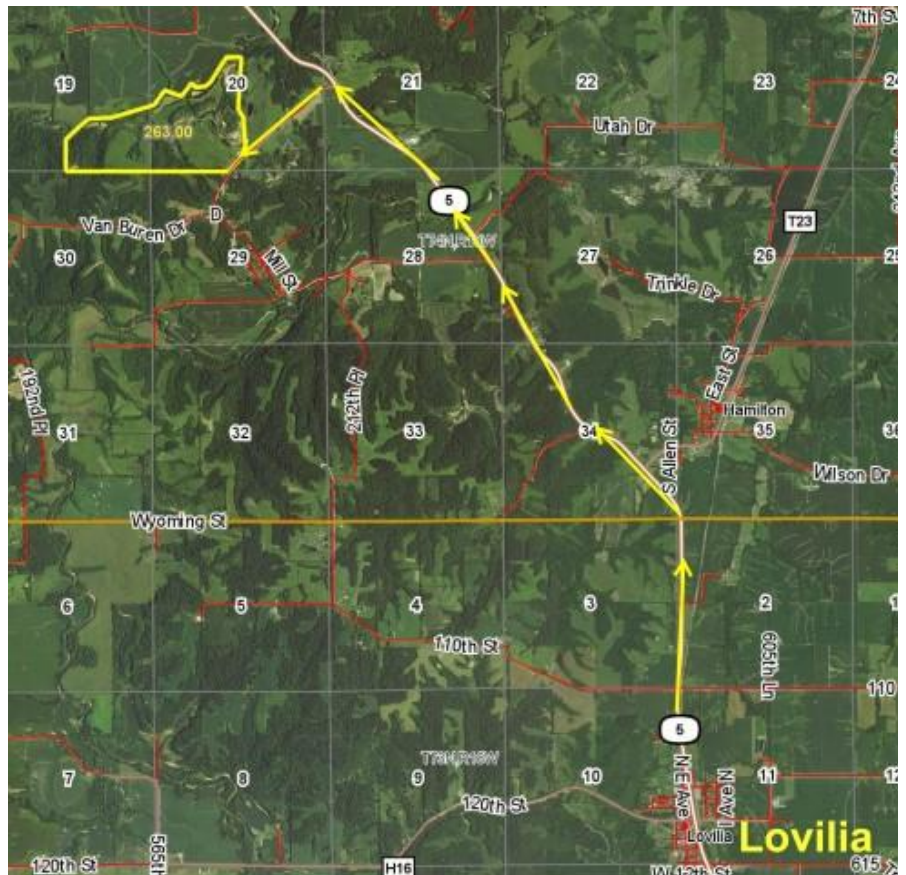
Dean Bettis
® Realtor
641-777-2597



LEGAL:

263 acres m/l in Section 19 & 20 of Liberty Twp; T74N, R18W. Subject to survey.

Exact legal to come from abstract.



DIRECTIONS: from Lovilia IA on Hwy 5 go north 5 miles; turn left onto Van Buren Drive, go approximately .7 mile and you will arrive at the property on your right. It is about 15 miles from Albia; 14 miles south of Knoxville and within 53 miles Des Moines, IA.



2015 UC-HFMRE



2015 UC-HFMRE