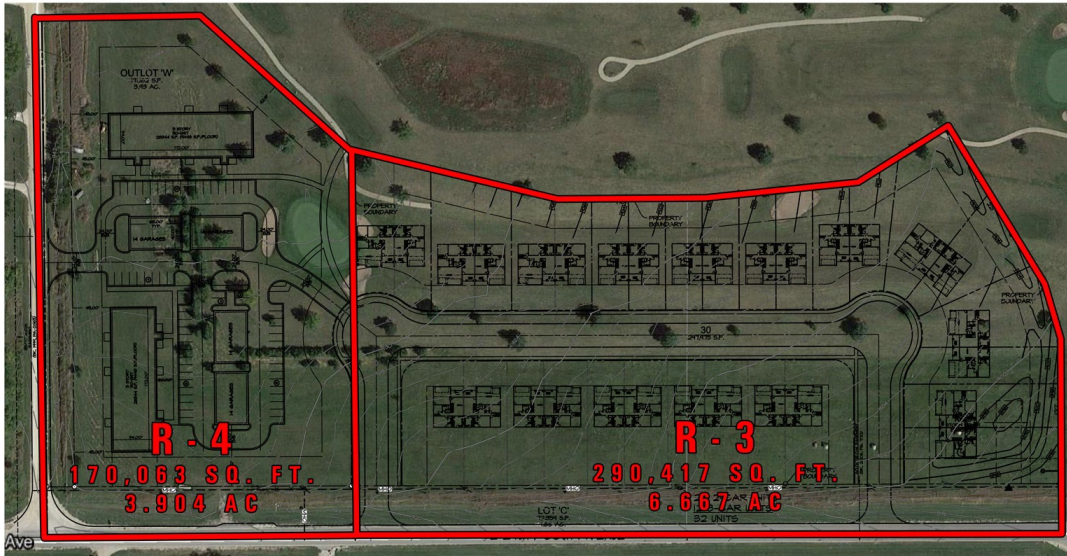


# LAND FOR SALE



## R-3 & R-4 MULTIFAMILY LAND NORWALK, IOWA



WARRIOR RUN MULTIFAMILY - NORWALK



© 2014 Peoples Company We obtained this information from sources we believe to be reliable. However, we have not verified its accuracy and make no guarantee, warranty or representation about it. It is submitted subject to the possibility of errors, omissions, change of price, rental or other conditions, prior sale, lease or financing, or withdrawal without notice. We include projections, opinions, assumptions or estimates for example only and they may not represent current or future performance of the property. You and your tax and legal advisors should conduct your own investigation of the property and transaction.

### LISTING #12412

#### PRICE:

R-3: \$406,584 (\$1.40 / Sq.Ft.)

R-4: \$238,088 (\$1.40 / Sq.Ft.)

**DESCRIPTION:** 10.571 Acres M/L of R-3 and R-4 multifamily land adjacent to the new Warrior Run Estates in Norwalk. Located along East 27th St., this property gives developers an easy to access location in a highly desirable community. Current concept shows 32 bi-attached units and 2 three-story buildings with 56 detached garage units. Warrior Run Estate Plat 1 single family lots were completed Summer 2015. Minutes to Hwy 5, the airport, and the Metro amenities.

**TAXES:** TBD

**SCHOOL DISTRICT:** Norwalk

**DIRECTIONS:** From Hwy 28 in Norwalk, turn east on North Road to 27th Street. Turn North on 27th Street, development entrance (Shady Lane Drive) is on the east side of the road.

**STEVE BRUERE**

C: 515.240.7500

O: 515.222.1347

Steve@PeoplesCompany.com