



For Sale
1500+/- Acres



Location: Holmes County, Madison County, Yazoo County Mississippi

Price: \$6,400,000

Access: Hwy 49; Hwy 22; Hwy 3

Cropland: 517 acres in Holmes Co.
255 acres in Madison Co.
453 acres in Yazoo Co.
1,225+/- acres cropland

Leases: \$252,500 annual farm lease payments

\$11,000 annual CRP payments

Additional opportunity for hunting leases



Rob N. Stockett, III, Broker
P.O. Box 751 • Madison, Mississippi 39130
Phone: 601-853-0032 • Fax: 601-898-1222

All information is deemed reliable but not guaranteed. Subject to price change or retraction from the market.
Madison Properties, Inc. is an agent of the Seller



For Sale
683+/- Acres
Holmes County, MS

Location: 1 mile Southwest of Tchula, MS

Price: \$3,000,000

Access: Hwy 49 East; County Road 212

Land: 517 acres Cropland; 370+/- acres landformed and irrigated;
3 irrigation wells; tailwater recovery system with surface
water pump and underground pipe connecting wells

81.61 acres CRP

Leases: \$105,000 annual lease ; expires 2017

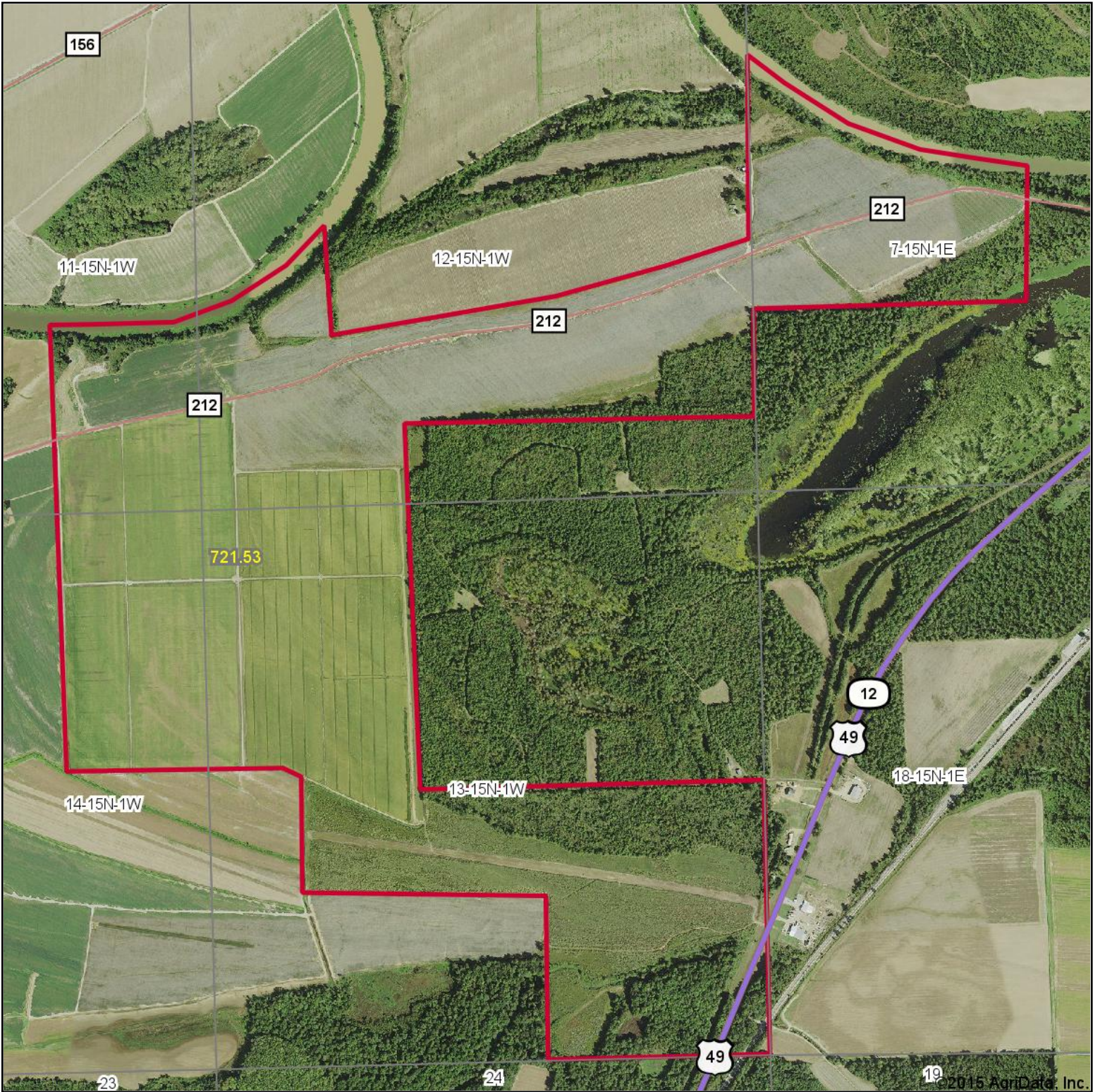
\$11,000+/- annual CRP payment through 2023

Additional opportunity for hunting lease at \$10,000
annually. Year-to-year, not currently leased for 2015-16
Season.



Rob N. Stockett, III, Broker
P.O. Box 751 • Madison, Mississippi 39130
Phone: 601-853-0032 • Fax: 601-898-1222

Aerial Map



Maps Provided By:
 **surety**
CUSTOMIZED ONLINE MAPPING
© AgriData, Inc. 2014 www.AgriDataInc.com

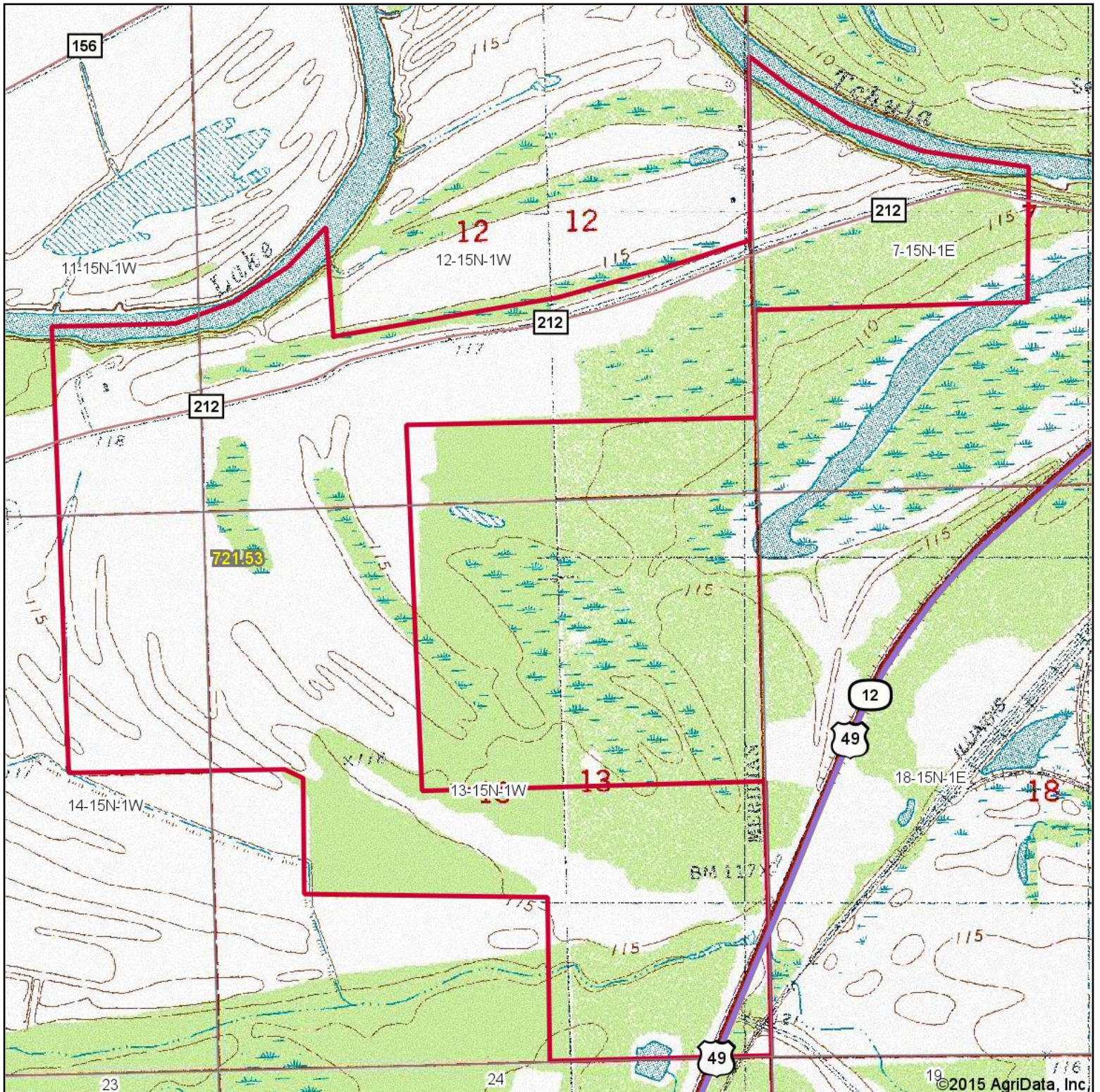
13-15N-1W
Holmes County
Mississippi

map center: 33° 10' 3.3, 90° 15' 1.35
scale: 17021



8/18/2015

Topography Map



Maps Provided By:

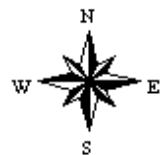


© AgriData, Inc. 2014 www.AgriDataInc.com

13-15N-1W
Holmes County
Mississippi

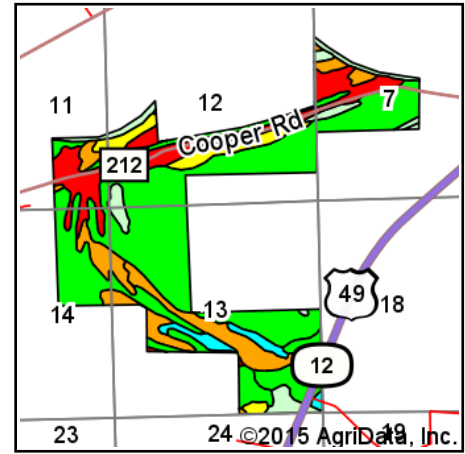
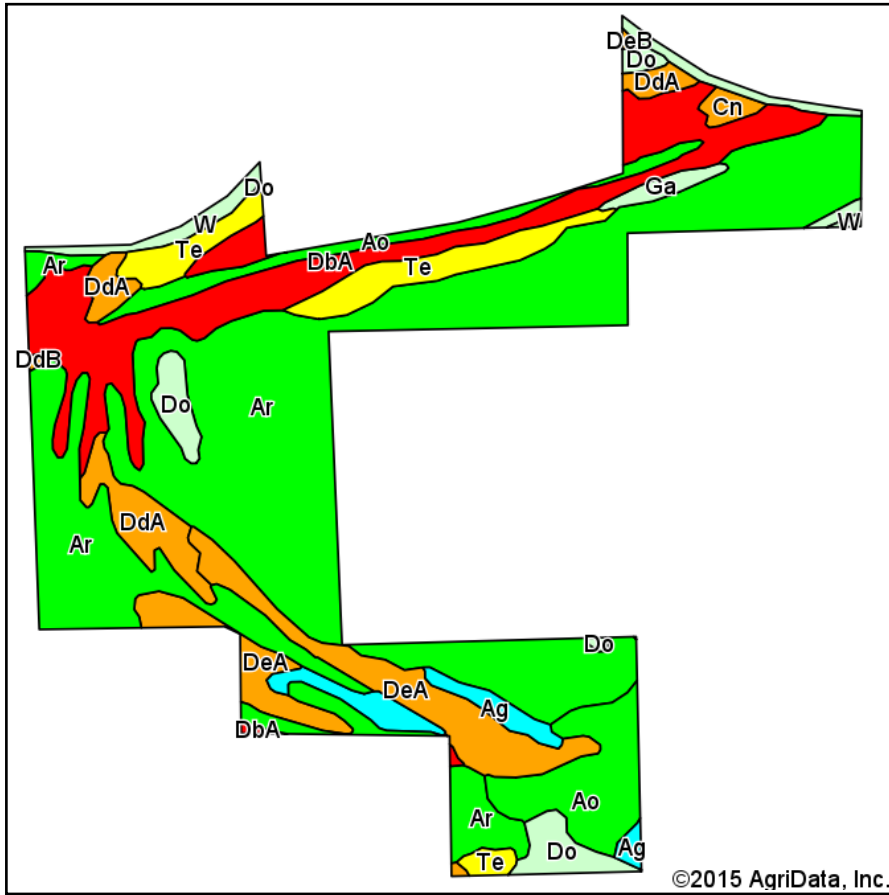
map center: 33° 10' 3.3, 90° 15' 1.35

scale: 17021



8/18/2015

Soil Map



State: **Mississippi**
 County: **Holmes**
 Location: **13-15N-1W**
 Township: **District 5**
 Acres: **721.53**
 Date: **8/18/2015**



Maps Provided By:

 CUSTOMIZED ONLINE MAPPING
 © AgriData, Inc. 2014 www.AgridataInc.com



Area Symbol: MS051, Soil Area Version: 9

Code	Soil Description	Acres	Percent of field	Non-Irr Class Legend	Non-Irr Class *c	Common bermudagrass	Corn	Cotton lint	Improved bermudagrass	Rice Irrigated	Soybeans	Tall fescue	Warm season grasses	Wheat
Ar	Alligator silty clay loam, occasionally flooded	362.39	50.2%		IVw	4.5					30			45
DbA	Dubbs silt loam, 0 to 2 percent slopes	105.54	14.6%		I		90	850	12		40	10	7	50
DeA	Dundee silty clay loam, 0 to 2 percent slopes	57.10	7.9%		IIw		85	750	9		40	9		45
Ao	Alligator silty clay, occasionally flooded	56.33	7.8%		IVw	4.5					30			45
Te	Tensas silty clay loam, 0 to 1 percent slopes, occasionally flooded	38.49	5.3%		IIIw	6.5		600	11	130	40	9		50
DdA	Dundee silt loam, 0 to 2 percent slopes	30.33	4.2%		IIw		85	750	9		40	9		45
Do	Dowling clay, frequently flooded	24.82	3.4%		VIIw									
Ag	Alligator clay, frequently flooded	19.24	2.7%		Vw	4.2								
W	Water	15.53	2.2%											
Ga	Gravel pits-Udorthents complex	5.52	0.8%		VIII									
Cn	Collins silt loam, occasionally flooded	4.42	0.6%		IIw		100	800	12		35	9.5		50

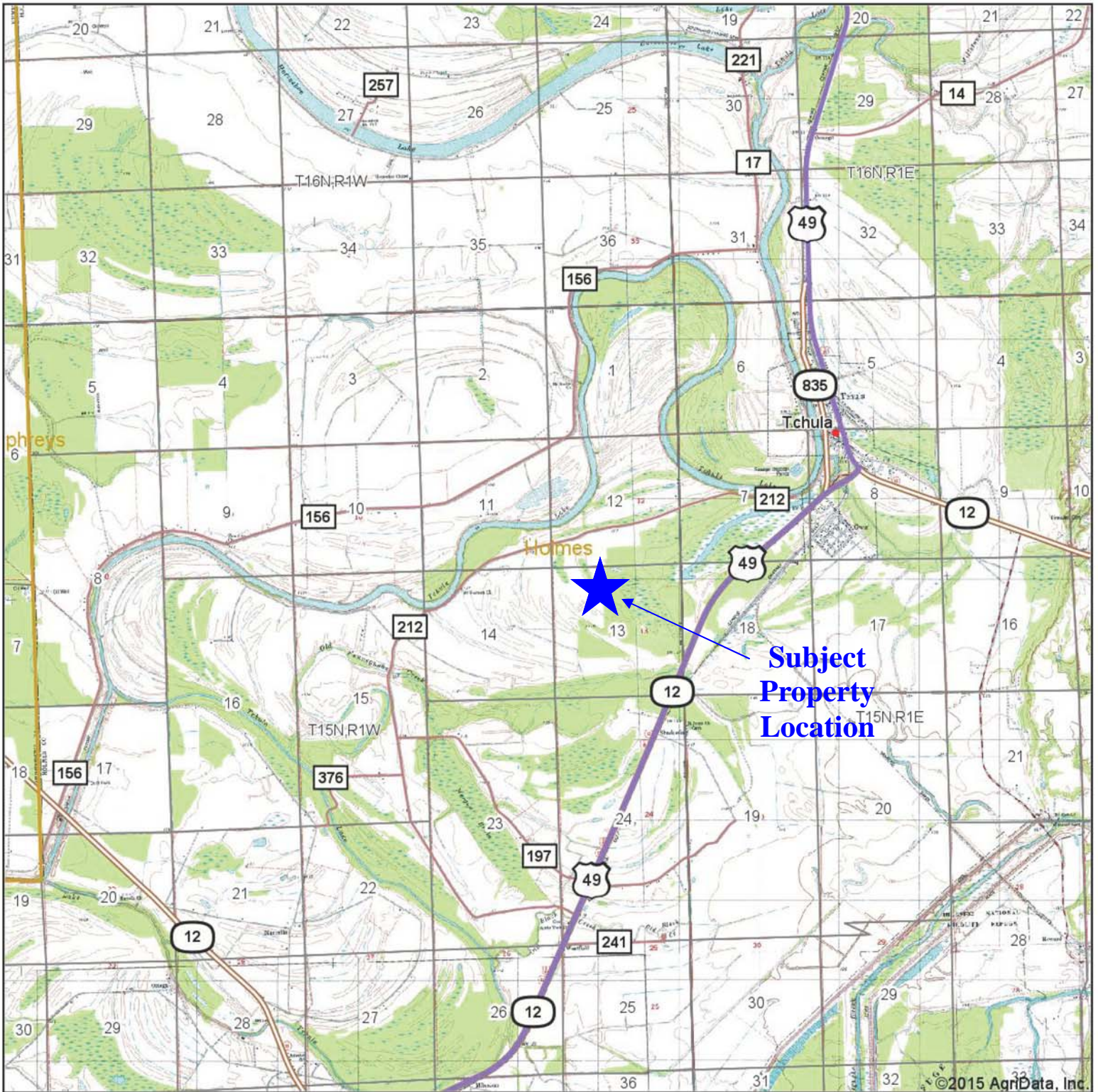
DdB	Dundee silt loam, 2 to 5 percent slopes	0.72	0.1%		Ile		80	700	9		35	9		40
DeB	Dundee silty clay loam, 2 to 5 percent slopes	0.61	0.1%		Ile		80	700	9		35	9		40
DbB	Dubbs silt loam, 2 to 5 percent slopes	0.49	0.1%		Ile		85	800	12		35	10	6.5	50
Weighted Average							3.1	24.3	254	3.5	6.9	30.5	3.1	42

Area Symbol: MS051, Soil Area Version: 9

*c: Using Capabilities Class Dominant Condition Aggregation Method

Soils data provided by USDA and NRCS.

Topography Map



MADISON PROPERTIES
BROKER/DEVELOPER

Maps Provided By:

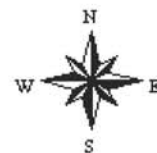
 **surety**[®]
CUSTOMIZED ONLINE MAPPING

© AgriData, Inc. 2014 www.AgriDataInc.com

11-15N-1W
Holmes County
Mississippi

map center: 33° 10' 15.81, 90° 15' 41.5

scale: 73121



8/21/2015

FSA - 578 (02-01-91)

REPORT OF COMMODITIES FARM AND TRACT DETAIL LISTING

DATE: 7-23-2014

PAGE: 1

Farm Number: 4085

Operator Name and Address

KILLEBREW COTTON CO
PO BOX 865
GREENWOOD, MS 38935-0865

Original: _____

Revision: _____

Cropland: 600.83

Farmland: 894.49

Tract Number	CLU/Field	Crop/Commodity	Variety/Type	Irr Prc	Int Use	Actual Use	Land Use	C/C Status	Reporting Unit	Reported Quantity	Determined Quantity	Crop Land	Field ID	Official/Measured	Planting Date	Planting Period	End Date
8613	1	CORN	YEL	N	GR			IP	A	3.62		Yes				01	
		Producer	COOPER PLANTING COMPANY						Share	100.00		RMA Unit				NAP Unit	1478
	2	CORN	YEL	N	GR			IP	A	45.14		Yes				01	
		Producer	COOPER PLANTING COMPANY						Share	100.00		RMA Unit				NAP Unit	1478
	2A	UPCN		N				M	A	40.00		Yes			4-21-2014	01	
		Producer	COOPER PLANTING COMPANY						Share	100.00		RMA Unit				NAP Unit	1478
	3	CORN	YEL	N	GR			IP	A	101.70		Yes				01	
		Producer	COOPER PLANTING COMPANY						Share	100.00		RMA Unit				NAP Unit	1478
	3A	RICE	LGR	N				J	A	68.70		Yes			5-25-2014	01	
		Producer	COOPER PLANTING COMPANY						Share	100.00		RMA Unit				NAP Unit	1478
	4	CORN	YEL	N	GR			IP	A	16.20		Yes				01	
		Producer	COOPER PLANTING COMPANY						Share	100.00		RMA Unit				NAP Unit	1478
	4A	RICE	LGR	N				J	A	6.60		Yes			5-25-2014	01	
		Producer	COOPER PLANTING COMPANY						Share	100.00		RMA Unit				NAP Unit	1478
	5	CORN	YEL	N	GR			IP	A	6.40		Yes				01	
		Producer	COOPER PLANTING COMPANY						Share	100.00		RMA Unit				NAP Unit	1478
	6	CORN	YEL	N	GR			IP	A	138.91		Yes				01	
		Producer	COOPER PLANTING COMPANY						Share	100.00		RMA Unit				NAP Unit	1478
	6	RICE	LGR	N				J	A	127.80		Yes			5-25-2014	01	
		Producer	COOPER PLANTING COMPANY						Share	100.00		RMA Unit				NAP Unit	1478
	7	CORN	YEL	N	GR			IP	A	74.86		Yes				01	
		Producer	COOPER PLANTING COMPANY						Share	100.00		RMA Unit				NAP Unit	1478
	7	UPCN		N				M	A	71.90		Yes			5-21-2014	01	
		Producer	COOPER PLANTING COMPANY						Share	100.00		RMA Unit				NAP Unit	1478
	8	CORN	YEL	N	GR			IP	A	3.47		Yes				01	
		Producer	COOPER PLANTING COMPANY						Share	100.00		RMA Unit				NAP Unit	1478
	9	CORN	YEL	N	GR			IP	A	26.34		Yes				01	
		Producer	COOPER PLANTING COMPANY						Share	100.00		RMA Unit				NAP Unit	1478
	9	UPCN		N				M	A	25.30		Yes			5-21-2014	01	
		Producer	COOPER PLANTING COMPANY						Share	100.00		RMA Unit				NAP Unit	1478
	10	CORN	YEL	N	GR			IP	A	40.08		Yes				01	
		Producer	COOPER PLANTING COMPANY						Share	100.00		RMA Unit				NAP Unit	1478
	10	UPCN		N				M	A	38.50		Yes			5-21-2014	01	
		Producer	COOPER PLANTING COMPANY						Share	100.00		RMA Unit				NAP Unit	1478
	11	GRASS	NAG	N	LS			I	A	1.37		Yes				01	
		Producer	COOPER PLANTING COMPANY						Share	100.00		RMA Unit				NAP Unit	1478
	21	CRP	031	N				I	A	28.28		Yes				01	2023
		Producer	WILLIAM J MCALPINE						Share	80.00		RMA Unit				NAP Unit	1479
			JOHN M MCALPINE							20.00							

FSA - 578 (02-01-91)

REPORT OF COMMODITIES FARM AND TRACT DETAIL LISTING

DATE: 7-23-2014

PAGE: 2

Farm Number: 4085

Tract Number	CLU/Field	Crop/Commodity	Variety/Type	Irr Prc	Int Use	Actual Use	Land Use	C/C Status	Reporting Unit	Reported Quantity	Determined Quantity	Crop Land	Field ID	Official/Measured	Planting Date	Planting Period	End Date
22		GRASS	NAG	N	LS			I	A	5.80		Yes				01	
		Producer	COOPER PLANTING COMPANY						Share	100.00		RMA Unit				NAP Unit	1478
23		CRP	031	N				I	A	41.42		Yes				01	2023
		Producer	WILLIAM J MCALPINE						Share	80.00		RMA Unit				NAP Unit	1479
			JOHN M MCALPINE							20.00							
24		CRP	031	N				I	A	8.34		Yes				01	2023
		Producer	WILLIAM J MCALPINE						Share	80.00		RMA Unit				NAP Unit	1479
			JOHN M MCALPINE							20.00							
27		GRASS	NAG	N	LS			I	A	6.77		Yes				01	
		Producer	COOPER PLANTING COMPANY						Share	100.00		RMA Unit				NAP Unit	1478
28		CRP	022	N				I	A	3.57		No				01	2023
		Producer	WILLIAM J MCALPINE						Share	80.00		RMA Unit				NAP Unit	1479
			JOHN M MCALPINE							20.00							

Cr/Co	Var/Type	Irr Prc	Int Use	Non-Irrig	Irrigated	Cr/Co	Var/Type	Irr Prc	Int Use	Non-Irrig	Irrigated	Cr/Co	Var/Type	Irr Prc	Int Use	Non-Irrig	Irrigated
CORN	YEL	N	GR	456.72		GRASS	NAG	N	LS	13.94		RICE	LGR	N		203.10	
UPCN		N		175.70		CRP	022	N		3.57		CRP	031	N		78.04	

Photo Number/Legal Description: F8 G7 S7,12,11,14,13 T15 R1W

Cropland: 548.70

Reported on Cropland: 548.70

Difference: 0.00

Reported on Non-Cropland: 3.57

NOTE: The authority for collecting the following information is Pub.L 107-76. This authority allows for the collection of information without prior OMB approval mandated by the Paperwork Reduction Act of 1995. The data will be used to determine eligibility for assistance. Furnishing the data is voluntary, however, without it assistance cannot be provided. The data may be furnished to any agency responsible for enforcing the provisions of the Act.

Producer Name	C/C	Share	C/C	Share	C/C	Share	C/C	Share
WILLIAM J MCALPINE	CRP	80.00						
COOPER PLANTING COMPANY	CORN	100.00	GRASS	100.00	UPCN	100.00	SOYBN	100.00
	RICE	100.00						
JOHN M MCALPINE	CRP	20.00						

CERTIFICATION: I certify to the best of my knowledge and belief that the acreage of crops/commodities and land uses listed herein are true and correct and that all required crops/commodities and land uses have been reported for the farms as applicable. Absent any different or contrary prior subsequent certification filed by any producer for any crop for which NAP coverage has been purchased, I certify that the applicable crop, type, practice, and intended use is not planted if it is not included on the Report of Commodities for this crop year. The signing of this form gives FSA representatives authorization to enter and inspect crops/commodities and land uses on the above identified land. A signature date (the date the producer signs the FSA-578) will also be captured.

Operator's Signature (By)

Date

This program or activity will be conducted on a nondiscriminatory basis without regard to race, color, religion, national origin, sex, age, marital status, or disability.

Rice 8% turn rows

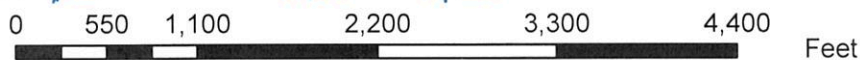


Cotton May 21

Rice May 25

Farm: 4085

Tract: 8613



Wetland Determination Identifiers

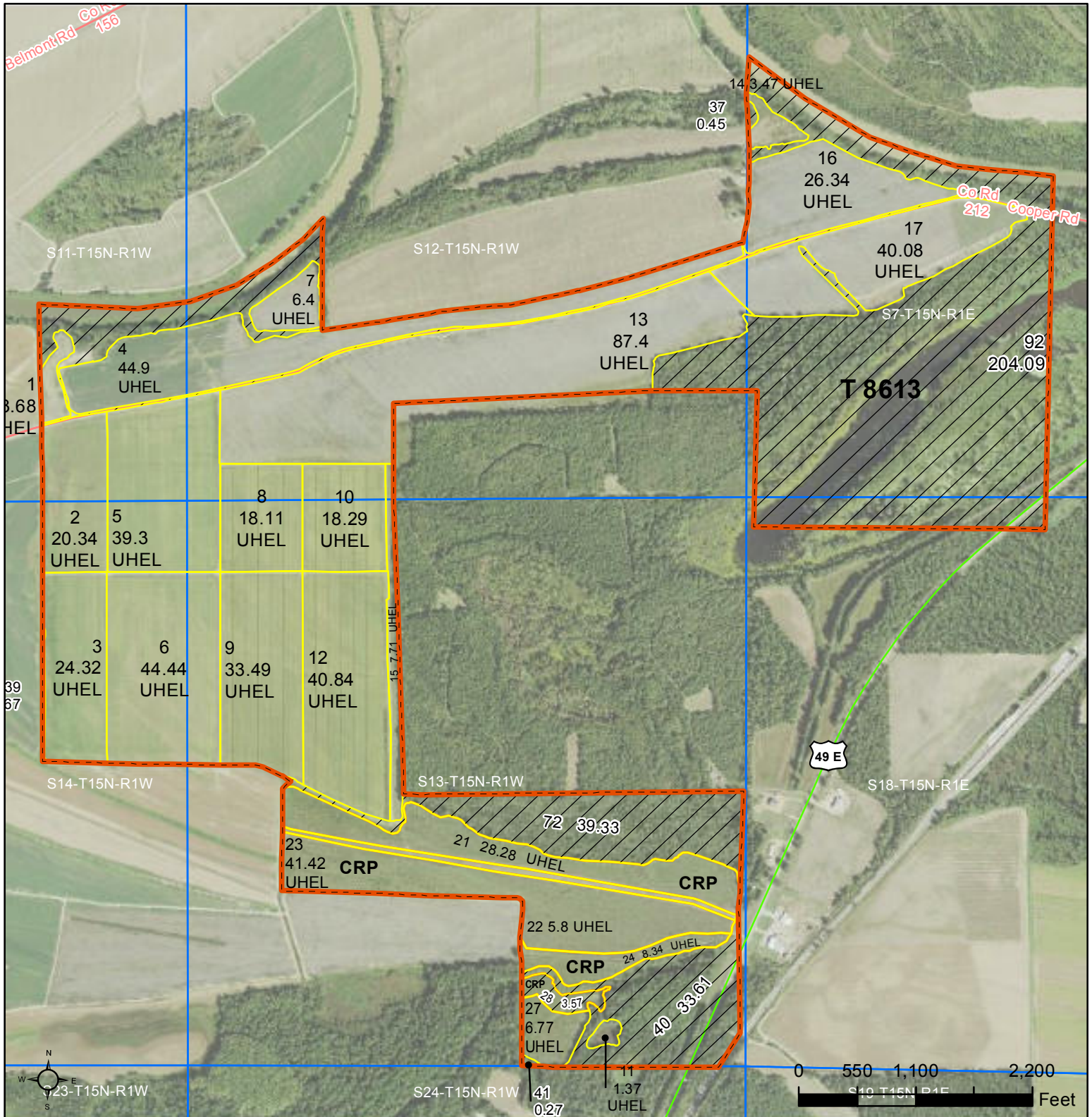
- Restricted use
- ▽ Limited Restrictions
- Exempt from Conservation Compliance Provisions



USDA Farm Service Agency
HOLMES County, Mississippi

Printed Date: May 16, 2014
Photography Date: 2012

Disclaimer: Wetland identifiers do not represent size, shape, or specific determination of area. Refer to your original determination (CPA-026 and attached maps) for exact wetland boundaries and determinations, or contact NRCS.



Common Land Unit

 	Non-Cropland
 	CRP
 	Cropland
 	Tract Boundary

Wetland Determination Identifiers

- Restricted Use
- ▼ Limited Restrictions
- Exempt from Conservation
- Compliance Provisions

Tract Cropland Total: 551.09 acres

2015 Program Year

Map Created August 14, 2015

Farm 4085

Tract 8613

Photography Year: 2014

United States Department of Agriculture (USDA) Farm Service Agency (FSA) maps are for FSA Program administration only. This map does not represent a legal survey or reflect actual ownership; rather it depicts the information provided directly from the producer and/or National Agricultural Imagery Program (NAIP) imagery. The producer accepts the data 'as is' and assumes all risks associated with its use. USDA-FSA assumes no responsibility for actual or consequential damage incurred as a result of any user's reliance on this data outside FSA Programs. Wetland identifiers do not represent the size, shape, or specific determination of the area. Refer to your original determination (CPA-026 and attached maps) for exact boundaries and determinations or contact USDA Natural Resources Conservation Service (NRCS).



For Sale
265+/- Acres
Madison County, MS

Location: Southwest of Flora, MS

Price: \$1,250,000

Access: Hwy 22; Shady Grove Rd.

Land: 255 acres Cropland; 2 waterfowl impoundments; deer food plots

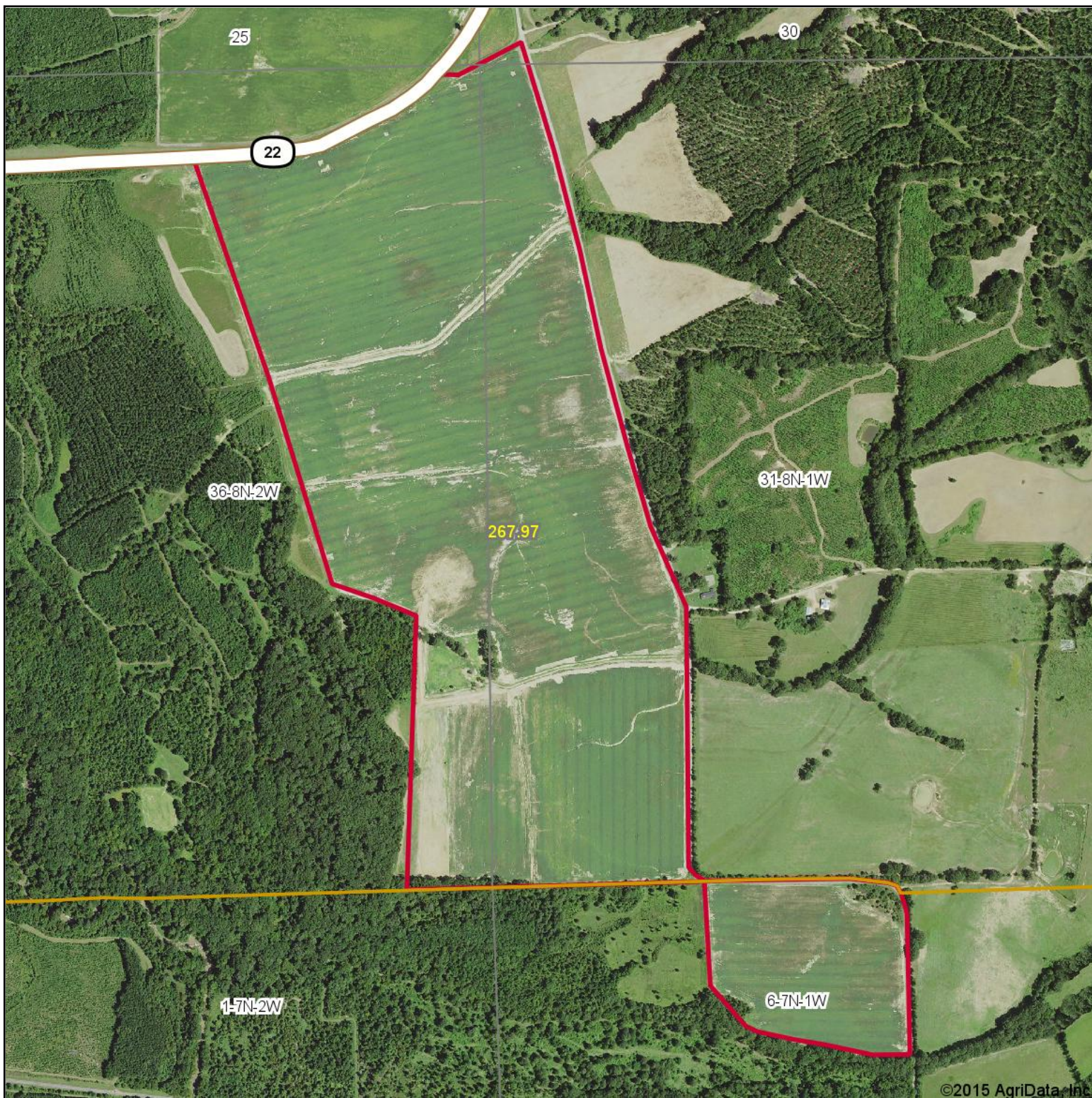
Leases: \$47,500 annual lease (\$185/ac); 2+/- years left on lease



Rob N. Stockett, III, Broker
P.O. Box 751 • Madison, Mississippi 39130
Phone: 601-853-0032 • Fax: 601-898-1222

All information is deemed reliable but not guaranteed. Subject to price change or retraction from the market.
Madison Properties, Inc. is an agent of the Seller

Aerial Map



©2015 AgriData, Inc.



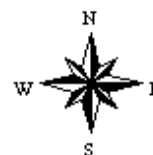
Maps Provided By:



© AgriData, Inc. 2014 www.AgriDataInc.com

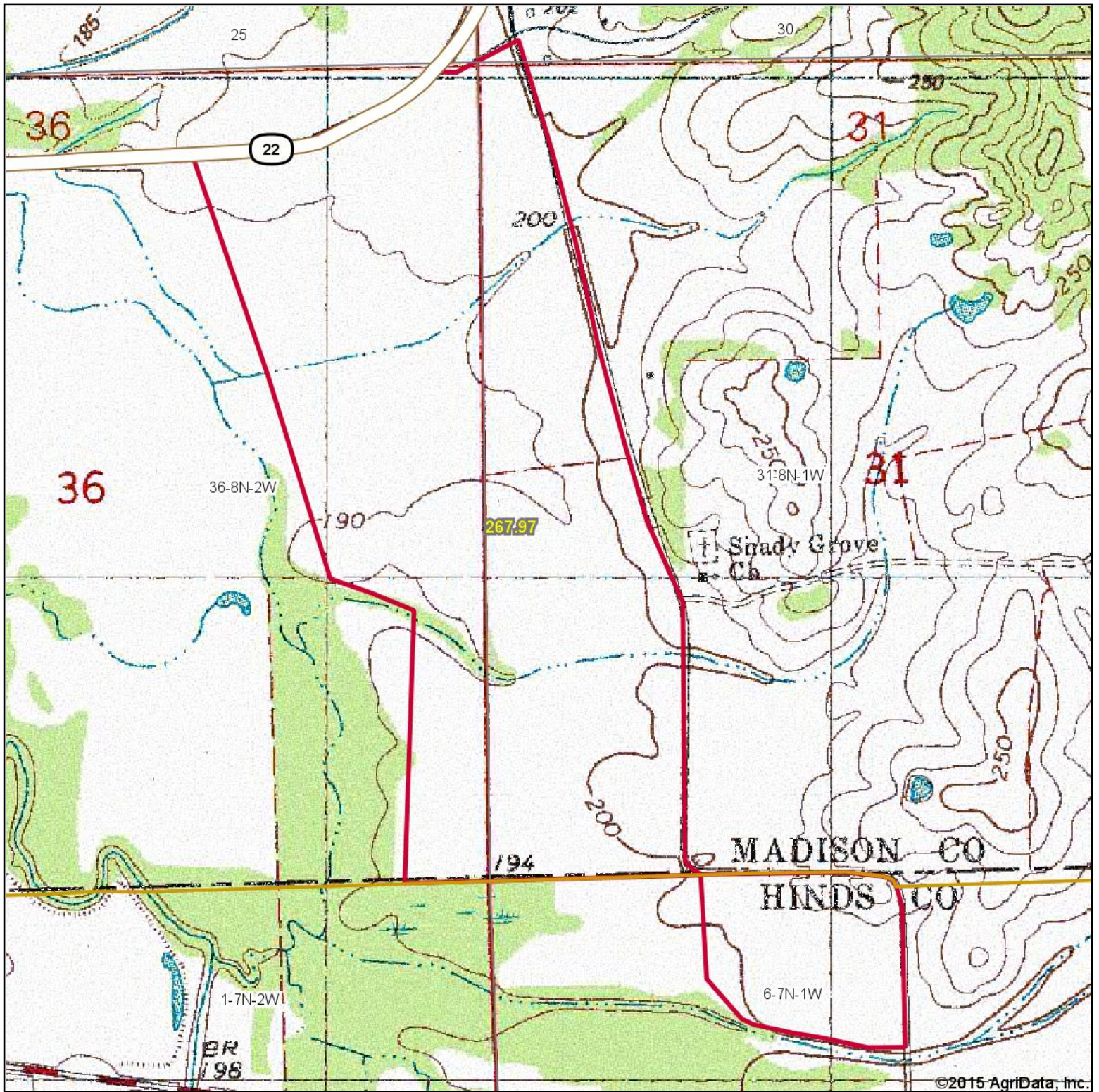
31-8N-1W
Madison County
Mississippi

map center: 32° 29' 37.38, 90° 20' 43.63
scale: 11624



8/18/2015

Topography Map



Maps Provided By:



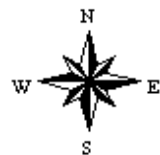
© AgriData, Inc. 2014

www.AgriDataInc.com

31-8N-1W
Madison County
Mississippi

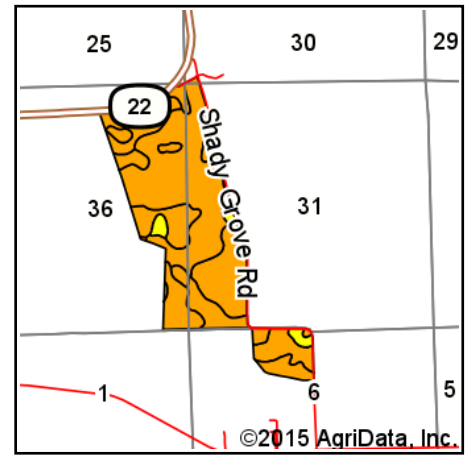
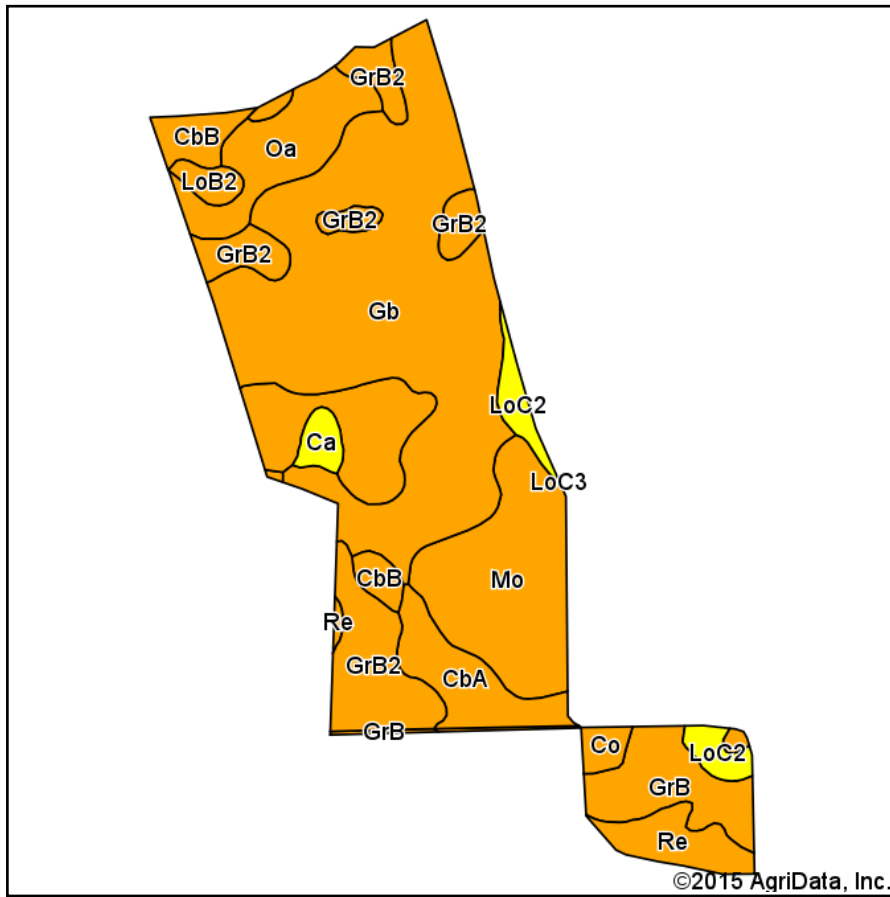
map center: 32° 29' 37.38, 90° 20' 43.63

scale: 11624



8/18/2015

Soil Map



State: **Mississippi**
 County: **Madison**
 Location: **31-8N-1W**
 Township: **District 4**
 Acres: **267.97**
 Date: **8/18/2015**



Maps Provided By:



Area Symbol: MS049, Soil Area Version: 12

Area Symbol: MS089, Soil Area Version: 9

Code	Soil Description	Acres	Percent of field	Non-Irr Class Legend	Non-Irr Class *c	Bahiagrass	Common bermudagrass	Corn	Cotton lint	Grass legume hay	Improved bermudagrass	Oats	Pasture	Rice Irrigated	Soybeans
Gb	Gillsburg silt loam	106.33	39.7%		Ilw		7	100	750		10				40
GrB2	Grenada silt loam, 2 to 5 percent slopes, eroded	47.30	17.7%		Ile			75	600	4	8				35
Mo	Morganfield silt loam	34.39	12.8%		Ilw	9.5		115	950		12	75			45
Oa	Oaklimeter silt loam	17.78	6.6%		Ilw		9	95	750		11				40
GrB	Grenada silt loam, 2 to 5 percent slopes	15.68	5.9%		Ile			75	600	4	8				35
CbA	Calloway silt loam, 0 to 1 percent slopes	13.17	4.9%		Ilw		6.5	90	700		9				38
Re	Riedtown silt loam	8.43	3.1%		Ilw		9	100	750		12				40
CbB	Calloway silt loam, 1 to 3 percent slopes	7.61	2.8%		Ile		6.5	90	700		9				38
LoC2	Loring silt loam, 5 to 8 percent slopes, eroded	3.73	1.4%		Ille			85	700				7.5		35

LoC2	Loring silt loam, 5 to 8 percent slopes, eroded	3.29	1.2%		Ille			85	700				7.5		35
Co	Calloway silt loam	3.14	1.2%		Ile		6.5	90	700		9				38
Ca	Calhoun silt loam	3.02	1.1%		Illw	6.5	5		400					120	25
LoB2	Loring silt loam, 2 to 5 percent slopes, eroded	2.78	1.0%		Ile			95	750				8		40
Re	Riedtown silt loam	0.67	0.3%		Ilw		9	100	750		12				40
MeB2	Memphis silt loam, 2 to 5 percent slopes, eroded, south	0.65	0.2%		Ile										
Weighted Average						1.3	4.3	93	728.9	0.9	9.3	9.6	0.3	1.4	38.9

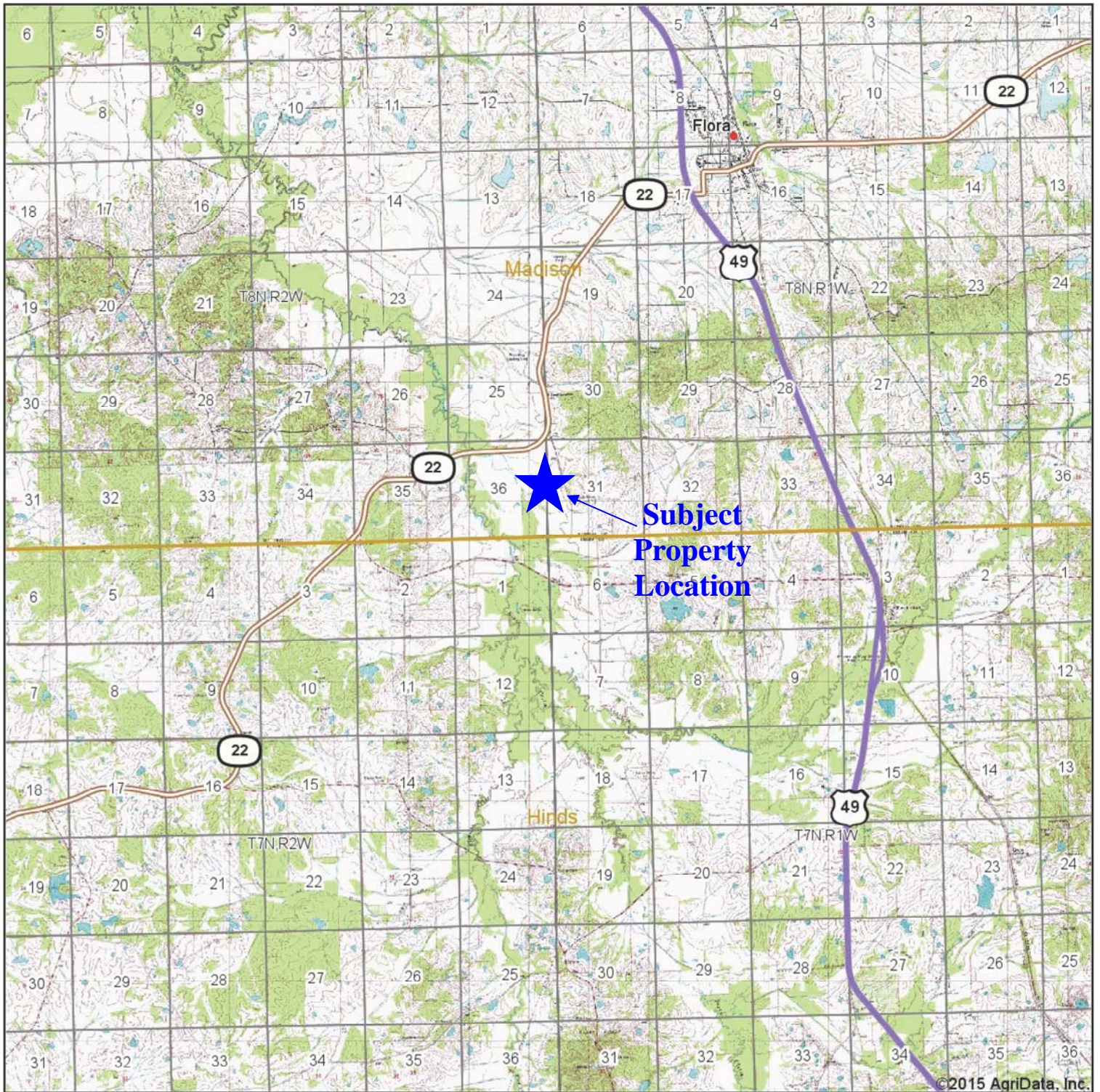
Area Symbol: MS049, Soil Area Version: 12

Area Symbol: MS089, Soil Area Version: 9

*c: Using Capabilities Class Dominant Condition Aggregation Method

Soils data provided by USDA and NRCS.

Topography Map



©2015 AgriData, Inc.



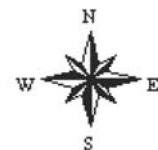
Maps Provided By:

CUSTOMIZED ONLINE MAPPING
© AgriData, Inc. 2014 www.AgriDataInc.com

6-7N-1W
Hinds County
Mississippi

map center: 32° 29' 9.61, 90° 20' 48.19

scale: 97830



8/21/2015

Mississippi
Madison

U.S. Department of Agriculture
Farm Service Agency

FARM: 5082
Prepared: 8/21/15 2:59 PM
Crop Year: 2015
Page: 1 of 2

Report ID: FSA-156EZ

Abbreviated 156 Farm Record

DISCLAIMER: This is data extracted from the web farm database. Because of potential messaging failures in MIDAS, this data is not guaranteed to be an accurate and complete representation of data contained in the MIDAS system, which is the system of record for Farm Records.

Operator Name	Farm Identifier	Recon Number
LITTLE ONWARD PLANTATION PARTNERSHIP	2012 Div of FSN 5040	2012 28089 47

Farms Associated with Operator:
4948

CRP Contract Number(s): None

Farmland	Cropland	DCP Cropland	WBP	WRP/EWP	CRP Cropland	GRP	Farm Status	Number of Tracts
390.72	367.17	367.17	0.0	0.0	0.0	0.0	Active	2
State Conservation	Other Conservation	Effective DCP Cropland	Double Cropped	MPL/FWP			FAV/WR History	
0.0	0.0	367.17	0.0	0.0			N	

	ARC/PLC	
ARC-IC	ARC-CO	PLC
NONE	WHEAT, OATS , FLAX CORN , SORGH, SNFLR SFLWR, SOYBN, BARLY RAPE , MUSTD, SESME CANOL, CRAMB, BEANS-GAR BEANS-GAD, PEAS , LENTI	PNUTS, RICE-LGR, RICE-MGR
		PLC-Default
		NONE

Crop	Base Acreage	CTAP Tran Yield	PLC Yield	CCC-505 CRP Reduction
GENERIC	340.6	673		0.0
Total Base Acres:	340.6			

Tract Number: 12852	Description: D-14; 8N, 2W, S23,25	FAV/WR History
BIA Range Unit Number:		N
HEL Status: HEL: conservation system is being actively applied		
Wetland Status: Tract does not contain a wetland		
WL Violations: None		

Farmland	Cropland	DCP Cropland	WBP	WRP/EWP	CRP Cropland	GRP
117.59	111.3	111.3	0.0	0.0	0.0	0.0
State Conservation	Other Conservation	Effective DCP Cropland	Double Cropped	MPL/FWP		
0.0	0.0	111.3	0.0	0.0		

Crop	Base Acreage	CTAP Tran Yield	PLC Yield	CCC-505 CRP Reduction
GENERIC	111.3	608		0.0
Total Base Acres:	111.3			

Owners: KEATH KILLEBREW HEATH KILLEBREW
Other Producers: None

Mississippi
Madison

U.S. Department of Agriculture
Farm Service Agency

FARM: 5082
Prepared: 8/21/15 2:59 PM
Crop Year: 2015
Page: 2 of 2

Report ID: FSA-156EZ

Abbreviated 156 Farm Record

DISCLAIMER: This is data extracted from the web farm database. Because of potential messaging failures in MIDAS, this data is not guaranteed to be an accurate and complete representation of data contained in the MIDAS system, which is the system of record for Farm Records.

Tract Number: 13001 **Description:** D-15, E-14,15; 8N,2W,S36; 8N,1W,S31; 7N,1W,S6 **FAV/WR History**
BIA Range Unit Number: **N**

HEL Status: HEL: conservation system is being actively applied

Wetland Status: Tract does not contain a wetland

WL Violations: None

Farmland	Cropland	DCP Cropland	WBP	WRP/EWP	CRP Cropland	GRP
273.13	255.87	255.87	0.0	0.0	0.0	0.0
State Conservation	Other Conservation	Effective DCP Cropland	Double Cropped	MPL/FWP		
0.0	0.0	255.87	0.0	0.0		

Crop	Base Acreage	CTAP Tran Yield	PLC Yield	CCC-505 CRP Reduction
GENERIC	229.3	704		0.0
Total Base Acres:	229.3			

Owners: KEATH KILLEBREW

HEATH KILLEBREW

Other Producers: None



Farm: 5099
Tract: 13021

0 265 530 1,060 1,590 2,120 Feet

Wetland Determination Identifiers
 ■ Restricted use
 ▲ Limited Restrictions
 ■ Exempt from Conservation Compliance Provisions



USDA Farm Service Agency
Madison County, Mississippi

Printed Date: August 21, 2015
Photography Date: 2014

Disclaimer: Wetland identifiers do not represent size, shape, or specific determination of area. Refer to your original determination (CPA-026 and attached maps) for exact wetland boundaries and determinations, or contact NRCS.



For Sale
550+/- Acres
Yazoo County, MS

Location: 1 mile North of Yazoo City, MS

Price: \$2,400,000

Access: Hwy 3

Land: 453.75 acres Cropland with 200+/- acres irrigated
(90 acres landformed, 110 acres pivot); 2 irrigation wells

100+/- acres woods, bayou, roads, ditches

Leases: \$100,000 annual lease (Tenant to add more pivot irrigation)

Additional income available for hunting lease.



Rob N. Stockett, III, Broker
P.O. Box 751 • Madison, Mississippi 39130
Phone: 601-853-0032 • Fax: 601-898-1222

All information is deemed reliable but not guaranteed. Subject to price change or retraction from the market.
Madison Properties, Inc. is an agent of the Seller

Aerial Map

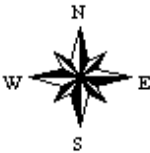


Maps Provided By:

© AgriData, Inc. 2014 www.AgriDataInc.com

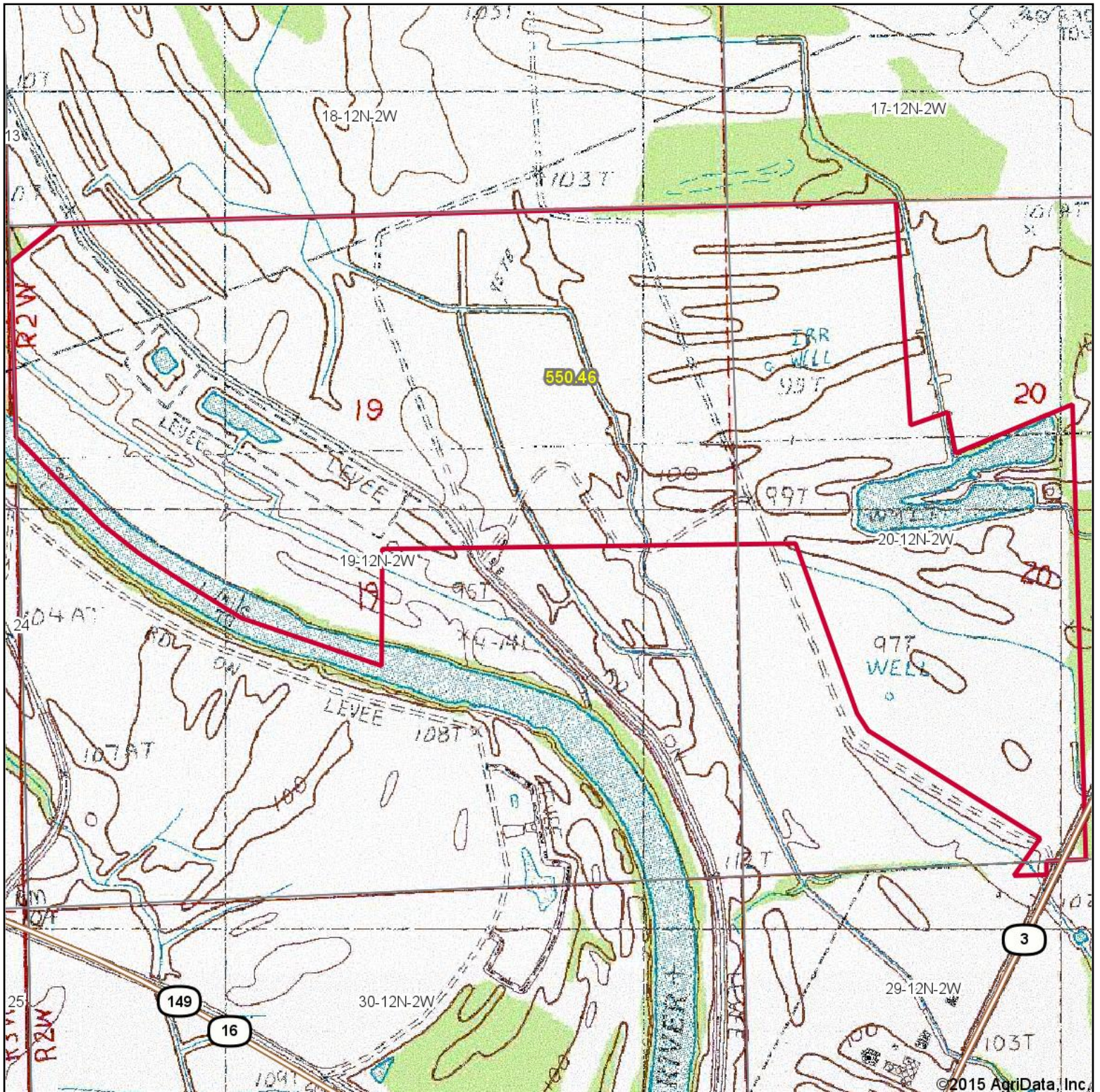
19-12N-2W
Yazoo County
Mississippi

map center: 32° 52' 22.61, 90° 26' 14.95
scale: 14038



8/21/2015

Topography Map



© 2015 AgriData, Inc.



Maps Provided By:



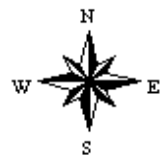
© AgriData, Inc. 2014

www.AgriDataInc.com

19-12N-2W
Yazoo County
Mississippi

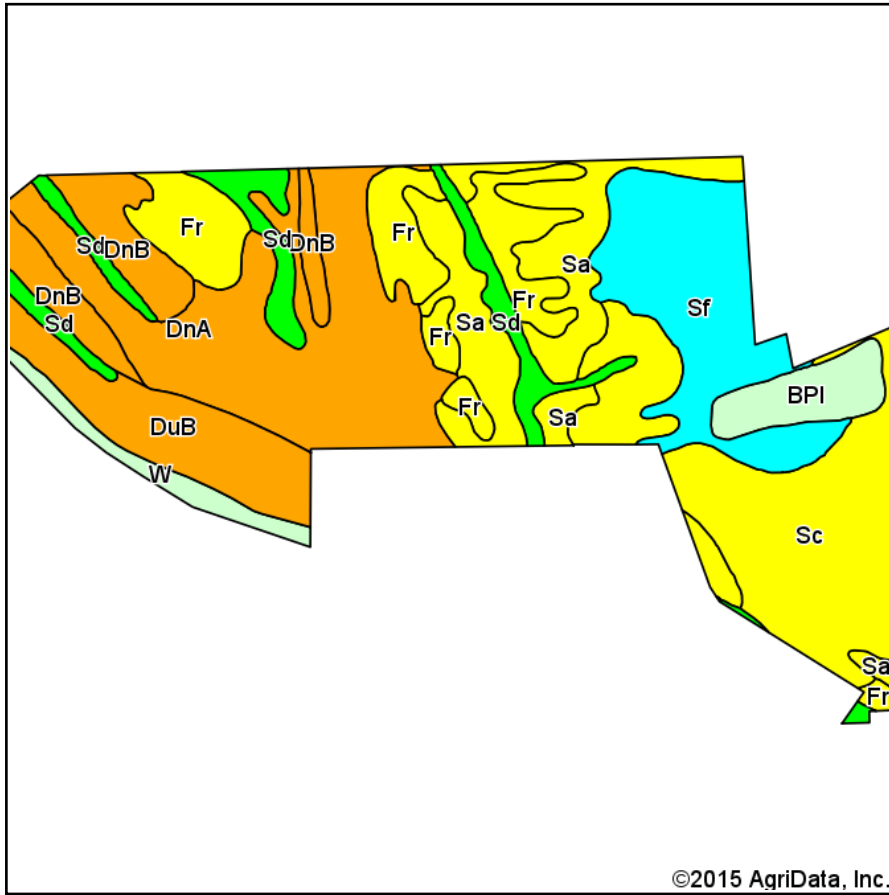
map center: 32° 52' 22.61, 90° 26' 14.95

scale: 14038

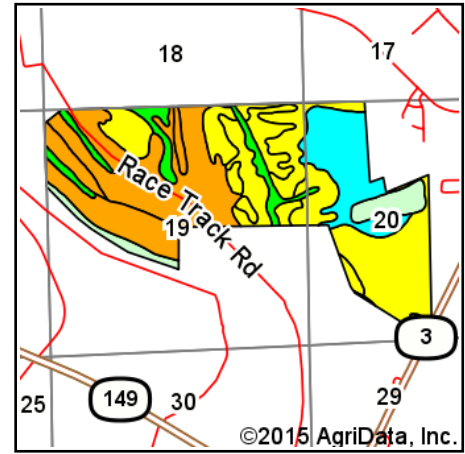


8/21/2015

Soil Map



Soils data provided by USDA and NRCS.



State: **Mississippi**
 County: **Yazoo**
 Location: **19-12N-2W**
 Township: **District 4**
 Acres: **550.46**
 Date: **8/21/2015**



Maps Provided By:



Area Symbol: MS163, Soil Area Version: 10

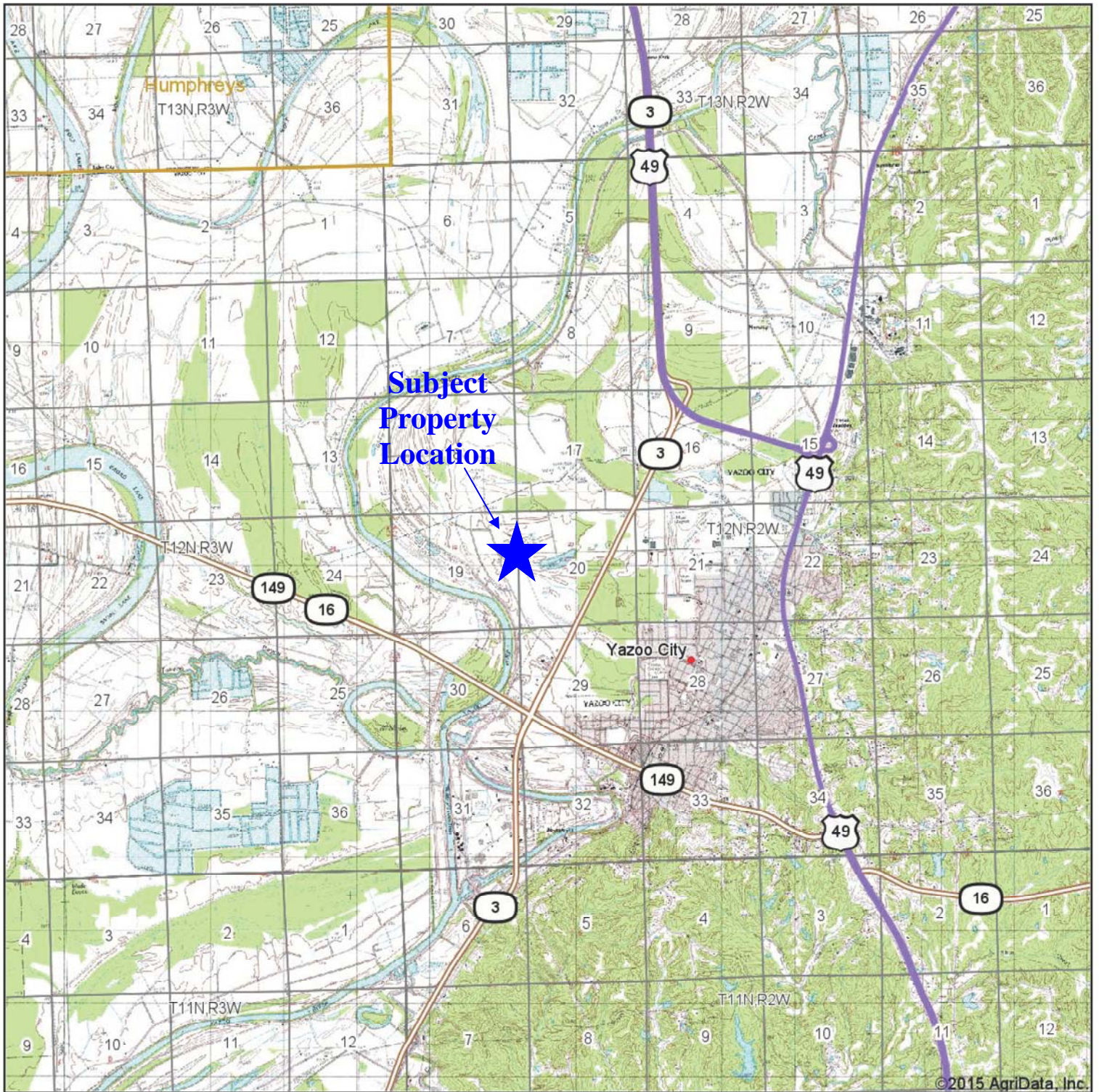
Code	Soil Description	Acres	Percent of field	Non-Irr Class Legend	Non-Irr Class *c	Common bermudagrass	Corn	Cotton lint	Improved bermudagrass	Rice Irrigated	Soybeans	Tall fescue	Wheat
DnA	Dundee silt loam, 0 to 2 percent slopes	109.00	19.8%		IIw		85	750	9		40	9	45
Sc	Sharkey clay, occasionally flooded	99.90	18.1%		IIIe	6.5		600	10		35	9	47
Sf	Sharkey and Forestdale soils, frequently flooded	70.04	12.7%		Vw	4.2							
Sa	Sharkey silty clay loam, occasionally flooded	67.08	12.2%		IIIe	6.5		600	10		35	9	47
Fr	Forestdale silty clay loam	58.70	10.7%		IIIw	6.5	50	600		130	35	9	40
DuB	Dundee silty clay loam, 2 to 5 percent slopes	43.03	7.8%		Ile		80	700	9		35	9	40
DnB	Dundee silt loam, 2 to 5 percent slopes	35.87	6.5%		Ile		80	700	9		35	9	40
Sd	Sharkey clay, depressional, occasionally flooded	35.42	6.4%		IVw	4.5					30		45
BPI	Borrow pits	19.17	3.5%										
W	Water	12.25	2.2%										
Weighted Average						3.5	33.6	494.8	6.1	13.9	29.2	6.8	36.1

Area Symbol: MS163, Soil Area Version: 10

*c: Using Capabilities Class Dominant Condition Aggregation Method

Soils data provided by USDA and NRCS.

Topography Map



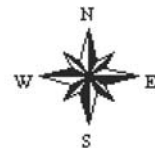
Maps Provided By:



20-12N-2W
Yazoo County
Mississippi

map center: 32° 52' 32.11, 90° 25' 41.8

scale: 80142



8/21/2015

Operator Name and Address

KILLEBREW COTTON CO
PO BOX 865
GREENWOOD, MS 38935-0865

Original: _____
Revision: _____
Cropland: 453.75
Farmland: 532.98

Tract Number	CLU/Field	Crop/Commodity	Variety/Type	Irr Prc	Int Use	Actual Use	Land Use	C/C Status	Reporting Unit	Reported Quantity	Determined Quantity	Crop Land	Field ID	Official/Measured	Planting Date	Planting Period	End Date
10159	1	CORN	YEL	N	GR			IP	A	21.35		Yes				01	
		Producer	KILLEBREW COTTON CO						Share	100.00		RMA Unit			NAP Unit	1733	
	2	CORN	YEL	N	GR			IP	A	38.28		Yes				01	
		Producer	KILLEBREW COTTON CO						Share	100.00		RMA Unit			NAP Unit	1733	
	3A	CORN	YEL	N	GR			IP	A	86.99		Yes				01	
		Producer	KILLEBREW COTTON CO						Share	100.00		RMA Unit			NAP Unit	1733	
	3A	SOYBN	COM	N	GR			J	A	83.42		Yes			5-21-2014	01	
		Producer	KILLEBREW COTTON CO						Share	100.00		RMA Unit			NAP Unit	1733	
	3B	UPCN		N				I	A	50.00		Yes			5-21-2014	01	
		Producer	KILLEBREW COTTON CO						Share	100.00		RMA Unit			NAP Unit	1733	
	4	CORN	YEL	N	GR			IP	A	88.34		Yes				01	
		Producer	KILLEBREW COTTON CO						Share	100.00		RMA Unit			NAP Unit	1733	
	4	RICE	LGR	I				J	A	84.00		Yes			5-21-2014	01	
		Producer	KILLEBREW COTTON CO						Share	100.00		RMA Unit			NAP Unit	1733	
	5	CORN	YEL	N	GR			IP	A	81.96		Yes				01	
		Producer	KILLEBREW COTTON CO						Share	100.00		RMA Unit			NAP Unit	1733	
	6	CORN	YEL	N	GR			IP	A	89.85		Yes				01	
		Producer	KILLEBREW COTTON CO						Share	100.00		RMA Unit			NAP Unit	1733	

Cr/Co	Var/Type	Irr Prc	Int Use	Non-Irrig	Irrigated	Cr/Co	Var/Type	Irr Prc	Int Use	Non-Irrig	Irrigated	Cr/Co	Var/Type	Irr Prc	Int Use	Non-Irrig	Irrigated
SOYBN	COM	N	GR	83.42		RICE	LGR	I			84.00	UPCN		N		50.00	
CORN	YEL	N	GR	406.77													
Photo Number/Legal Description: Sec 19,20,T12N, R2W																	
Cropland: 453.75					Reported on Cropland: 456.77					Difference: 3.02				Reported on Non-Cropland: 0.00			

FSA - 578 (02-01-91)

REPORT OF COMMODITIES
FARM SUMMARY

DATE: 8-20-2015
PAGE: 2

Farm Number: 4072

Operator Name and Address

KILLEBREW COTTON CO
PO BOX 865
GREENWOOD, MS 38935-0865

Original: _____
Revision: _____
Cropland: 453.75
Farmland: 532.98

NOTE: The authority for collecting the following information is Pub.L 107-76. This authority allows for the collection of information without prior OMB approval mandated by the Paperwork Reduction Act of 1995. The data will be used to determine eligibility for assistance. Furnishing the data is voluntary, however, without it assistance cannot be provided. The data may be furnished to any agency responsible for enforcing the provisions of the Act.

Producer Name				C/C	Share	C/C	Share	C/C	Share	C/C	Share
KILLEBREW COTTON CO				RICE	100.00	SOYBN	100.00	UPCN	100.00	CORN	100.00
Crop/ Commodity	Variety/ Type	Irr Prac	Int Use	Rpt Exp	Det Exp	Rpt Pvt	Det Pvt	Rpt Vol	Det Vol		
CORN	YEL	N	GR			406.77					
Crop/ Commodity	Variety/ Type	Irrigation Practice	Intended Use	Reported Quantity	Determined Quantity	Crop/ Commodity	Variety/ Type	Irrigation Practice	Intended Use	Reported Quantity	Determined Quantity
SOYBN	COM	N	GR	83.42		RICE	LGR	I		84.00	
UPCN		N		50.00							

CERTIFICATION: I certify to the best of my knowledge and belief that the acreage of crops/commodities and land uses listed herein are true and correct and that all required crops/commodities and land uses have been reported for the farms as applicable. Absent any different or contrary prior subsequent certification filed by any producer for any crop for which NAP coverage has been purchased, I certify that the applicable crop, type, practice, and intended use is not planted if it is not included on the Report of Commodities for this crop year. The signing of this form gives FSA representatives authorization to enter and inspect crops/commodities and land uses on the above identified land. A signature date (the date the producer signs the FSA-578) will also be captured.

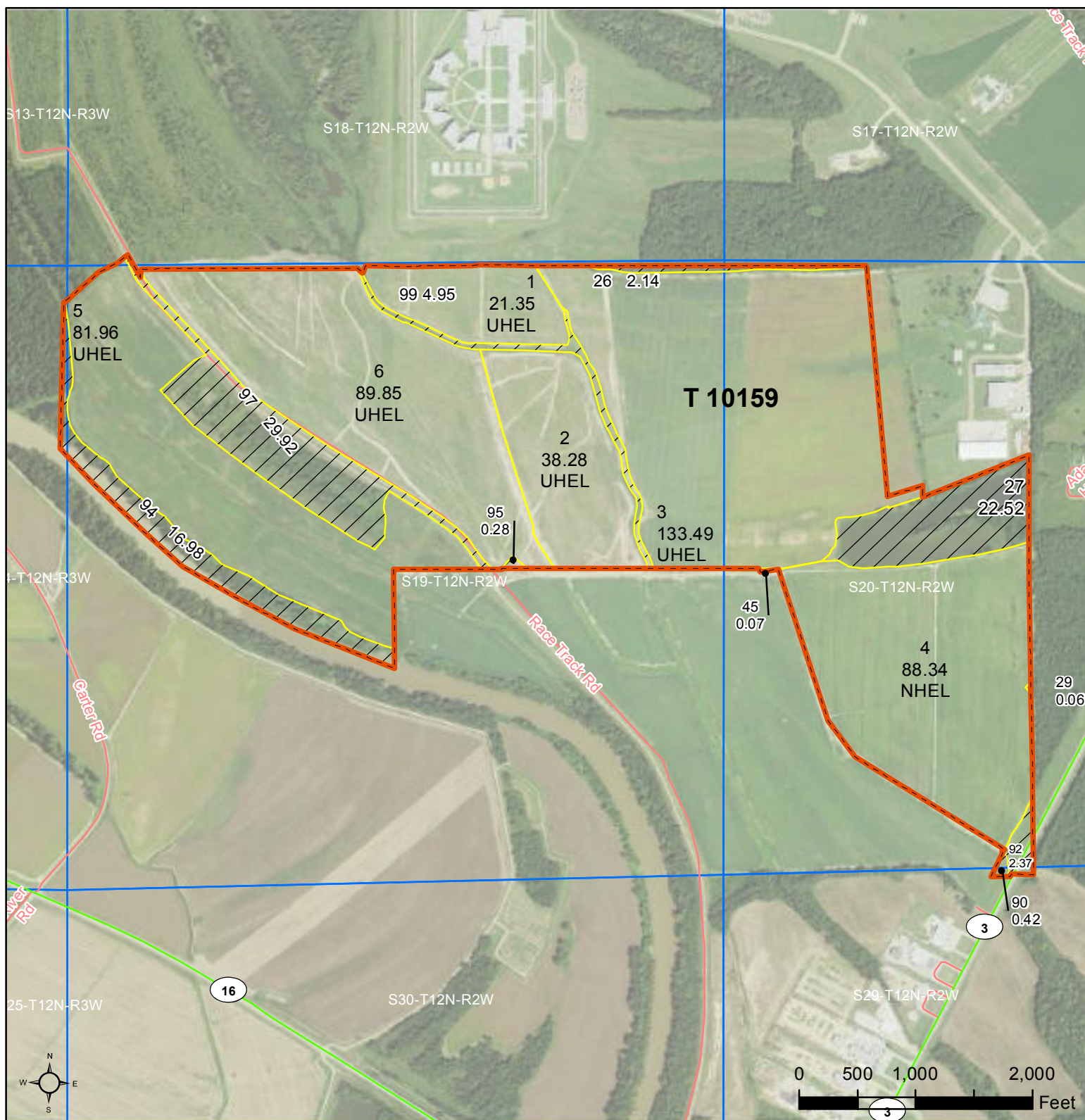
Operator's Signature (By)	Date
---------------------------	------

This program or activity will be conducted on a nondiscriminatory basis without regard to race, color, religion, national origin, sex, age, marital status, or disability.



United States
Department of
Agriculture

Yazoo County, Mississippi



Common Land Unit

clu_classification_code

Cropland

Non-Cropland

Tract Boundary

Wetland Determination Identifiers

- Restricted Use
- ▼ Limited Restrictions
- Exempt from Conservation Compliance Provisions

Tract Cropland Total: 453.75 acres

2015 Program Year

Map Created February 12, 2015

Farm **4072**
Tract **10159**

United States Department of Agriculture (USDA) Farm Service Agency (FSA) maps are for FSA Program administration only. This map does not represent a legal survey or reflect actual ownership; rather it depicts the information provided directly from the producer and/or National Agricultural Imagery Program (NAIP) imagery. The producer accepts the data 'as is' and assumes all risks associated with its use. USDA-FSA assumes no responsibility for actual or consequential damage incurred as a result of any user's reliance on this data outside FSA Programs. Wetland identifiers do not represent the size, shape, or specific determination of the area. Refer to your original determination (CPA-026 and attached maps) for exact boundaries and determinations or contact USDA Natural Resources Conservation Service (NRCS).

