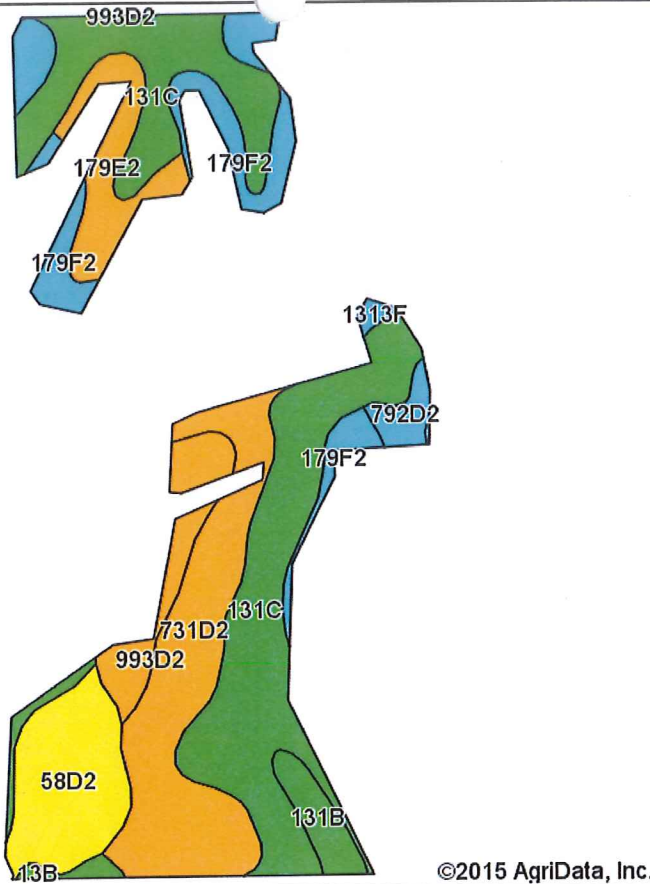
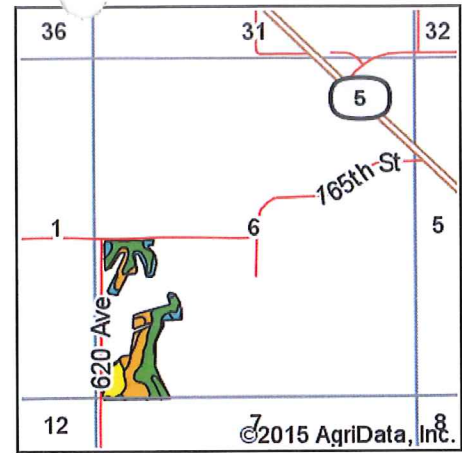


Soils Map-CSR2



Soils data provided by USDA and NRCS.



State: Iowa
County: Monroe
Location: 6-72N-17W
Township: Troy
Acres: 33.58
Date: 7/15/2015

Hawkeye Farm Mgmt & Real Estate

United Country Real Estate
22 N Main, Albion IA Phone: 641-932-7796
Email: hawkeye@uclwa.com
On the web: www.uclwa.com; www.iowa-whitetailfarms.com

Maps Provided By:

surety
CUSTOMIZED ONLINE MAPPING
© AgriData, Inc. 2014 www.AgriDataInc.com



Area Symbol: IA135, Soil Area Version: 22

Code	Soil Description	Acres	Percent of field	CSR2 Legend	Non-Irr Class *c	CSR2**	CSR
31C	Pershing silt loam, 5 to 9 percent slopes	12.50	37.2%		IIIe	65	49
31D2	Pershing silty clay loam, 9 to 14 percent slopes, moderately eroded	7.06	21.0%		IVe	35	31
8D2	Douds loam, 9 to 14 percent slopes, moderately eroded	3.89	11.6%		IVe	45	28
79F2	Gara loam, 18 to 24 percent slopes, moderately eroded	3.78	11.3%		VIe	12	13
79E2	Gara loam, 14 to 18 percent slopes, moderately eroded	2.18	6.5%		VIe	35	33
93D2	Gara-Armstrong loams, 9 to 14 percent slopes, moderately eroded	1.79	5.3%		IVe	35	20
31B	Pershing silt loam, 2 to 5 percent slopes	1.00	3.0%		IIIe	70	67
92D2	Armstrong loam, 9 to 14 percent slopes, moderately eroded	0.61	1.8%		IVe	5	13
3B	Olmitz-Colo-Vesser complex, 2 to 5 percent slopes	0.60	1.8%		IIw	82	60
313F	Munterville silt loam, 18 to 25 percent slopes	0.17	0.5%		VIIe	6	5
Weighted Average						45.9	36

Area Symbol: IA135, Soil Area Version: 22

IA has updated the CSR values for each county to CSR2.

: Using Capabilities Class Dominant Condition Aggregation Method

Soils data provided by USDA and NRCS.