



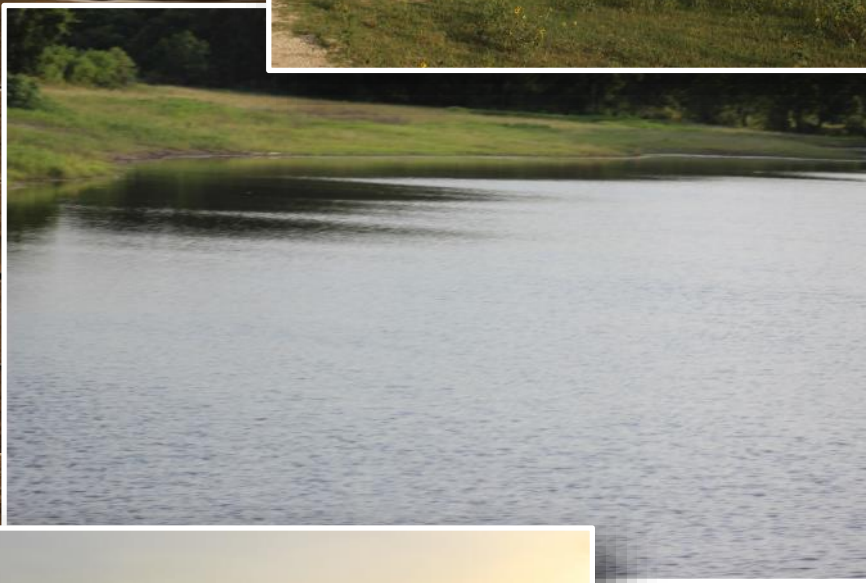
**198+/- Acre
High Fenced
Ranch**

TBD FM 932 • Purmela, TX

GoreGroupTexas.com

2424 E. Main St. • Gatesville, TX 76528

254.206.0915 • Office: 254.248.0809



Rare find in Coryell County! This 198+/- acre high fenced ranch boasts panoramic views of beautiful Texas countryside with mature trees, native grass and diverse topography. 3 tanks along with a seasonal creek that runs through the width of the property, makes this an ideal spot for recreational activities. The current inventory consists of 30-50 White Tail Deer with several Trophy Bucks, which will convey. The property is approximately 65% open and 35% cover with beautiful live oaks and native trees. There is Black and Rocky soil throughout. The property has Multi-County Water and Electric available and there are good roads throughout the property. Seller is motivated.

Your dreams are our goals...

GORE
REAL ESTATE GROUP

Property Information Overview

Acreage.....	198 +/- Acres
Location.....	FM 932, Purmela, TX
Price.....	\$645,000
Highest and Best Use.....	Recreational, Residential
Topography.....	Rolling, Varied, Open
Trees.....	Oak, Pecan, Cedar, Birch, Native Trees
Surface Water.....	4 ponds, 1 seasonal creek
Wildlife.....	White Tail Deer, Dove, Fox
School District.....	Evant ISD
Taxes.....	\$371.97 with Ag Exemption (2013 tax year)
Distance from Waco.....	53 Miles
Distance from Temple.....	50 Miles
Distance from Austin.....	110 Miles
Distance from DFW.....	126 Miles
Special Features.....	High Fenced Ranch

Directions: From Coryell County Courthouse: Head west on US 84 (13.6 miles), Turn right onto FM 932, Property is on the right approx. 2 miles down FM 932, look for signs.



Rare Find in Coryell County



High Fenced Ranch



White Tail Deer, Dove, & Fox



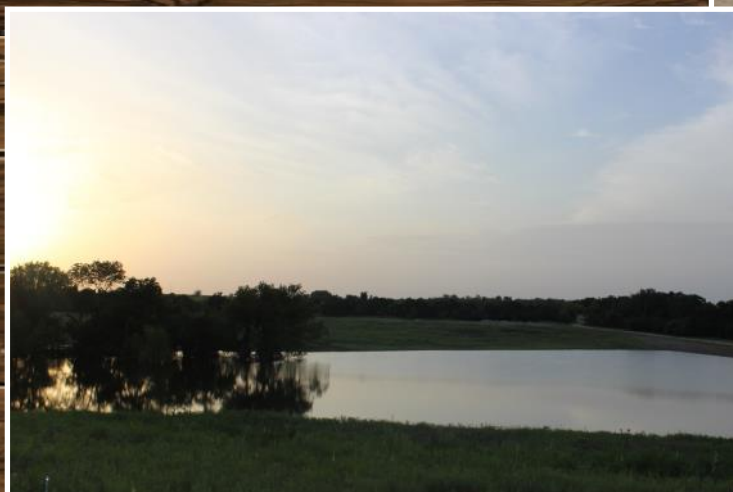
3 Tanks



1 Seasonal Creek

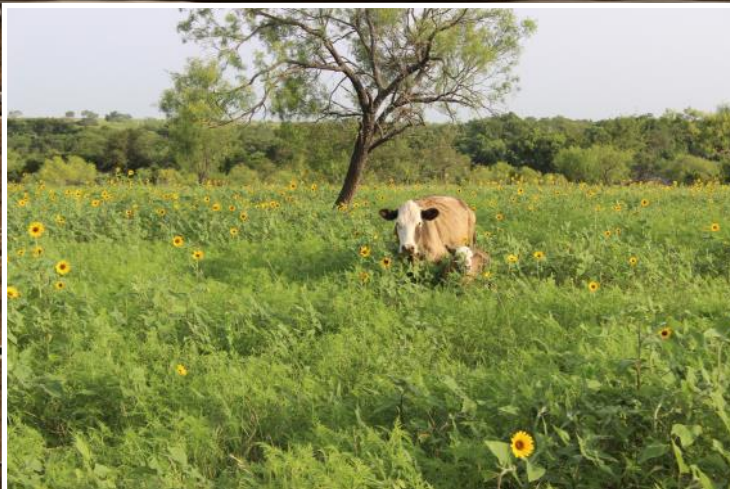


Amazing Views





Beautiful High Fenced Ranch
4 Ponds & 1 Seasonal Creek

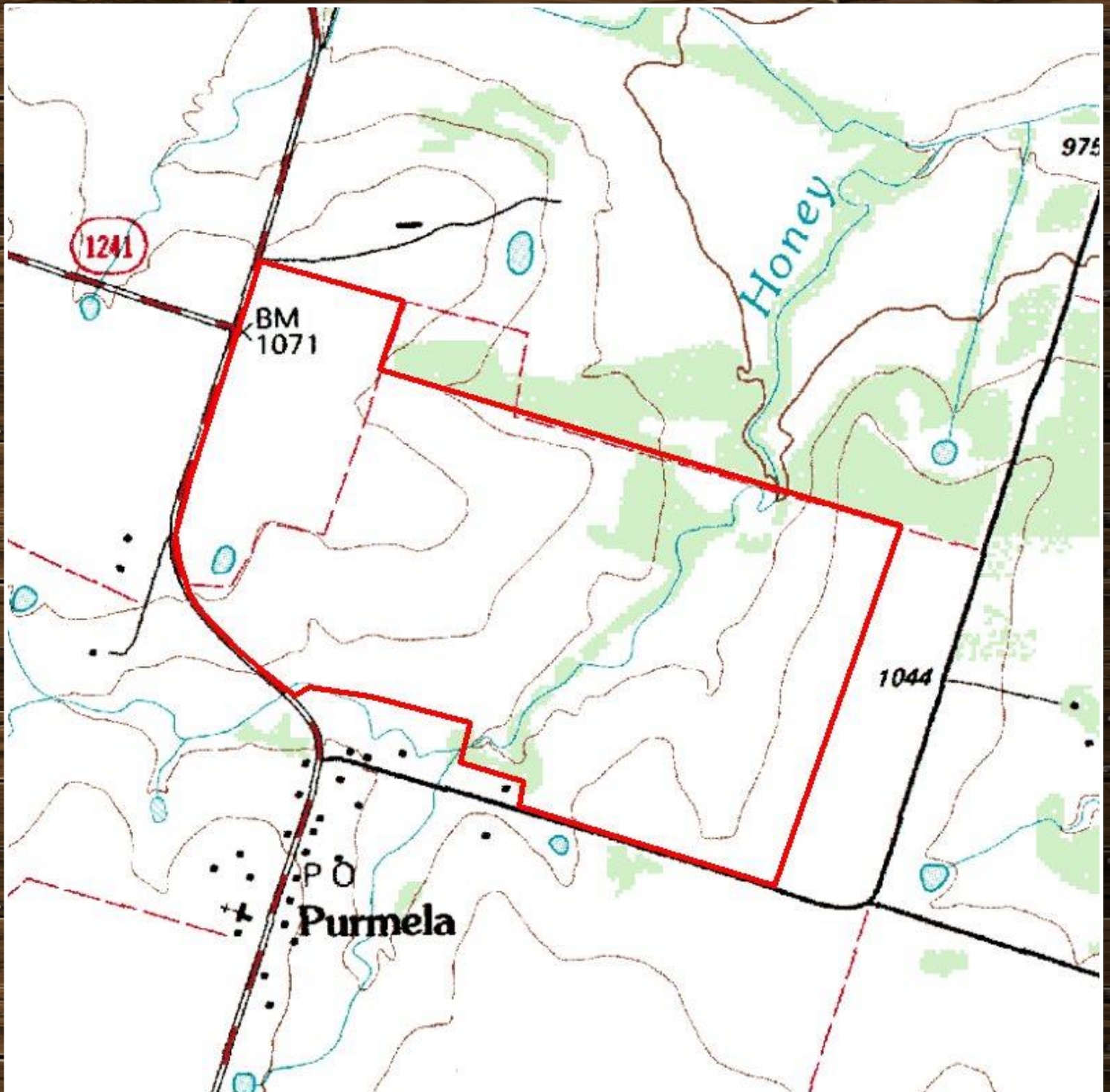


Aerial Map



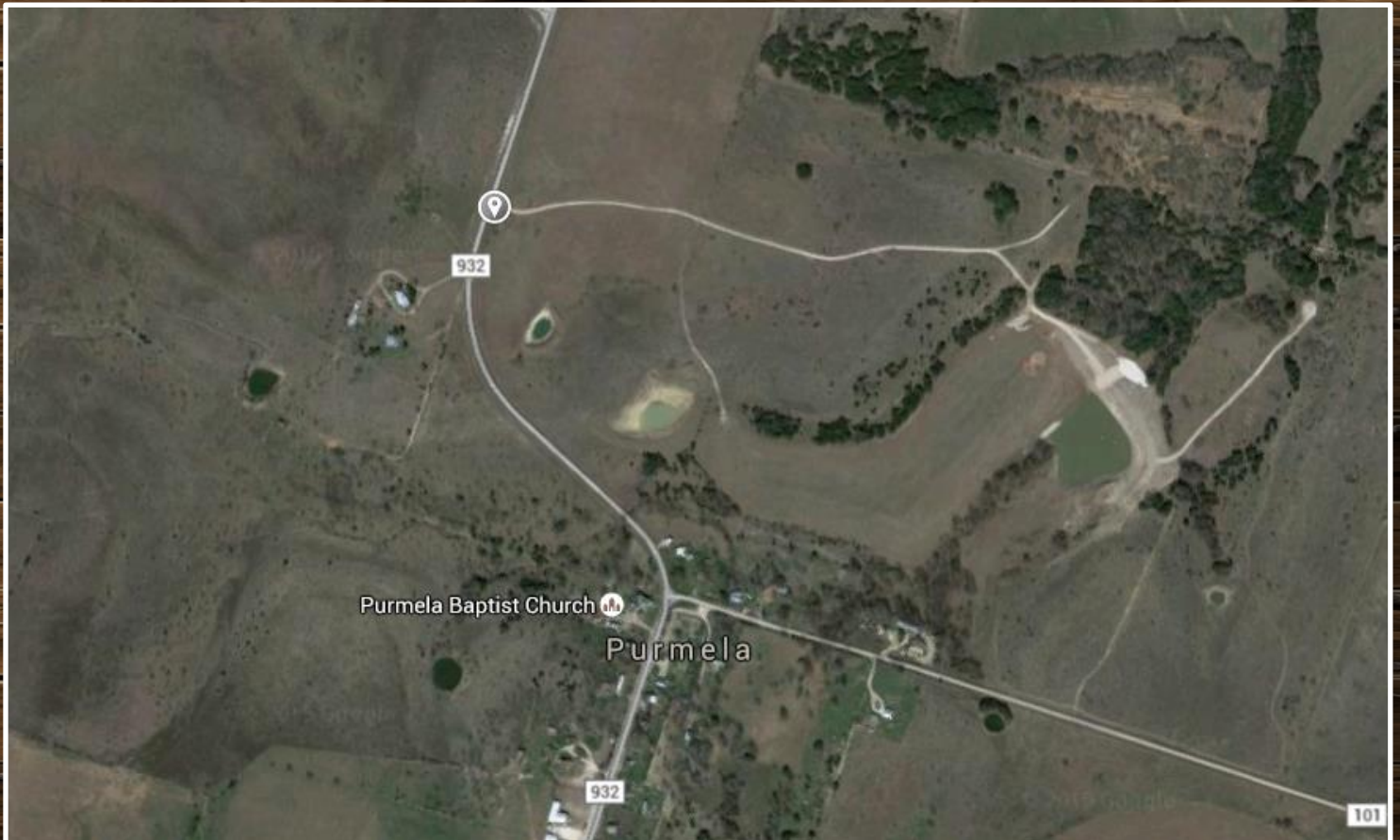
Boundary lines are an approximation and are not final.

Topographical Map



Boundary lines are an approximation and are not final.

Location Map



TBD FM 932 • Purmela, TX

**GPS Coordinates can be typed into Google Earth or
Google Maps for property location:**

31°29'19.85"N 97°57'52.57"W

Boundary lines are an approximation and are not final.



For more information on this listing, please contact:

Kim Gore, Broker

Cell: 254.206.0915

kim@goregrouptexas.com

DISCLAIMER

Broker and/or Agent does not make any representations, warranties or covenants of any kind or character, whether expressed or implied, with respect to the quality or condition of the property, the suitability of the property for any and all activities and uses which purchaser may conduct there on, compliance by the property with any laws, rules, ordinances or regulations if any applicable governmental authority, or habitability, merchantability, or fitness for any particular purpose. All drawings are neither legally recorded maps nor surveys and are not intended to be used as such. The information contained herein has been obtained from sources deemed reliable. However, we cannot warrant the complete accuracy thereof subject to errors, omissions, change of price, rental or other conditions, prior to sale, lease or financing, or withdrawal without notice. Broker and/or Agent does not make any representation regarding hazardous waste, as defined by the Texas Solid Waste Disposal Act and the regulations adopted there under, or the United States Environmental Protection Agency regulations or disposal or any other hazardous or toxic substance in or on the property; or the Endangered Species Act of 1973; or for live oak decline, oak wilt, or any other natural phenomena.

2424 E. Main St. • Gatesville, TX 76528

254.248.0809

GoreGroupTexas.com

