



# FOR SALE

1,035.18 Acres

Bradley, CA  
Monterey County

\$1,000,000

## STIMSON RANCH #1

*Prime Ranch Land For Sale! 1,035 acres of Monterey County Ranch Land located on New Pleyto Road, bordering Lake San Antonio. Property has good roads throughout with all weather access to most of the ranch. In addition to its grazing potential, property has exceptional hunting potential with populations of deer, elk and wild pigs. Property has a water right to Lake San Antonio which is supplied by a gas powered pump and pipe line. Property is perimeter fenced and has a current cattle lease.*



## **TRI** Outdoor Properties

**LAND BROKERAGE / Recreational · Agricultural · Conservation**

*A Division of TRI Commercial Real Estate*

*Building Great Relationships Between People and the Outdoors*

**SERVING  
NORTHERN & CENTRAL  
CALIFORNIA**



# STIMSON RANCH #1

*Panoramic views of Lake San Antonio.*

**TRI** *Outdoor Properties*

LAND BROKERAGE / Recreational · Agricultural · Conservation

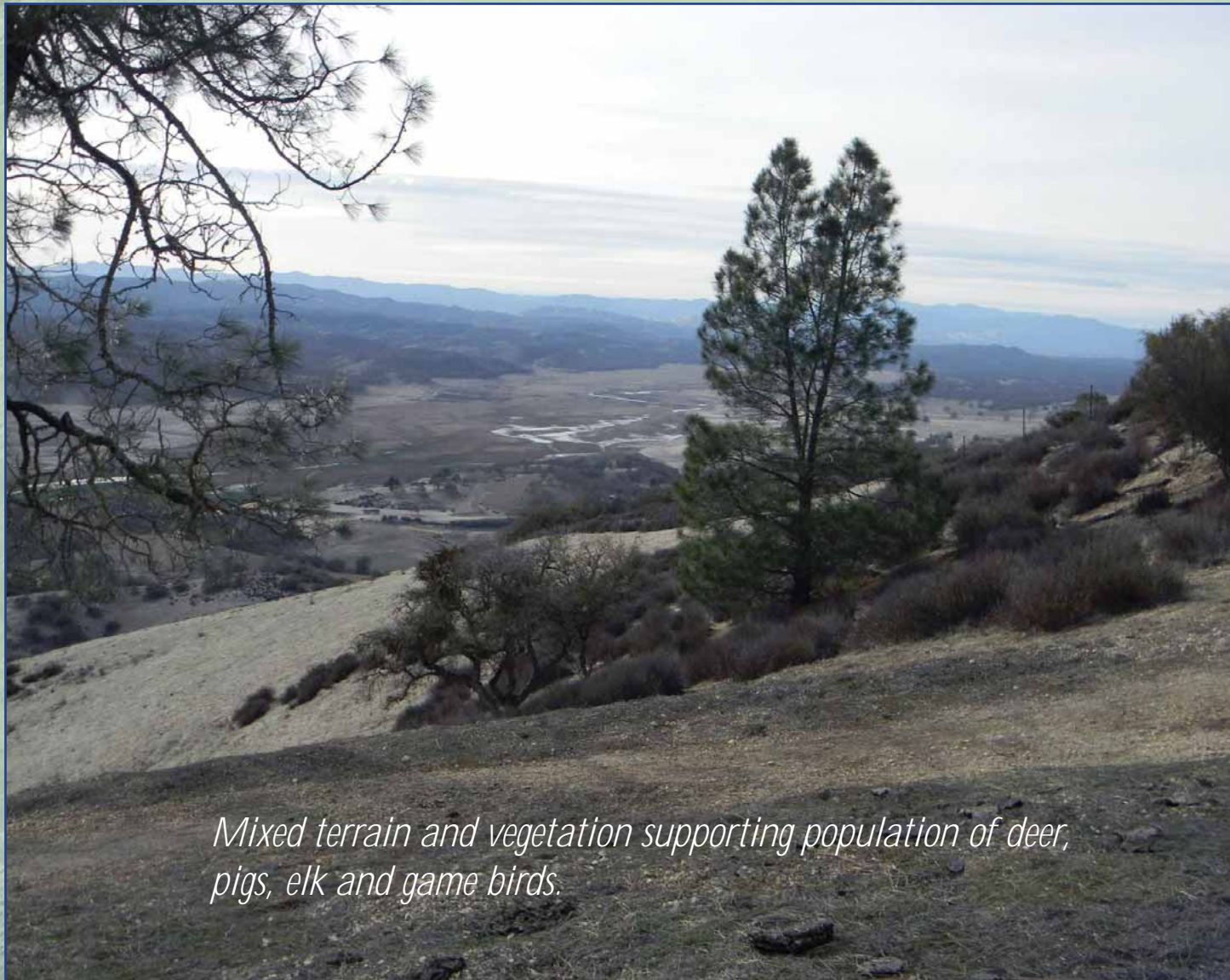
A Division of TRI Commercial Real Estate

*Building Great Relationships Between People and the Outdoors*

SERVING  
NORTHERN & CENTRAL  
CALIFORNIA



# STIMSON RANCH #1



*Mixed terrain and vegetation supporting population of deer, pigs, elk and game birds.*



## **TRI** Outdoor Properties

LAND BROKERAGE / Recreational · Agricultural · Conservation

A Division of TRI Commercial Real Estate

*Building Great Relationships Between People and the Outdoors*

SERVING  
NORTHERN & CENTRAL  
CALIFORNIA



# STIMSON RANCH #1



*Water is supplied by a gasoline powered pump and pipeline.*



**TRI** *Outdoor Properties*

LAND BROKERAGE / Recreational · Agricultural · Conservation

A Division of TRI Commercial Real Estate

*Building Great Relationships Between People and the Outdoors*

SERVING  
NORTHERN & CENTRAL  
CALIFORNIA



# STIMSON RANCH #1

New Pleyto Road  
Bradley, CA 93426

Cross Street: Lake San Antonio

APN: Multiple 424-061-031  
424-061-033, 424-061-035,  
424-081-030, 424-081-031,  
424-091-001.

Acres: 1,035.18

Elevation Minimum/Maximum:  
885 Feet - 1,486 Feet

Latitude: 35.838508

Longitude: -120.938029

Zoning: RG - 160

MLS# on Realtor.com: 15043871

Price: \$1,000,000

Terms: Cash or submit terms.

Amenities: Large open range  
property; mixed terrain and  
vegetation; good interior road system;  
easy access and reliable water.



*First Class Hunting Camp*

## **TRI** Outdoor Properties

LAND BROKERAGE / Recreational · Agricultural · Conservation

A Division of TRI Commercial Real Estate

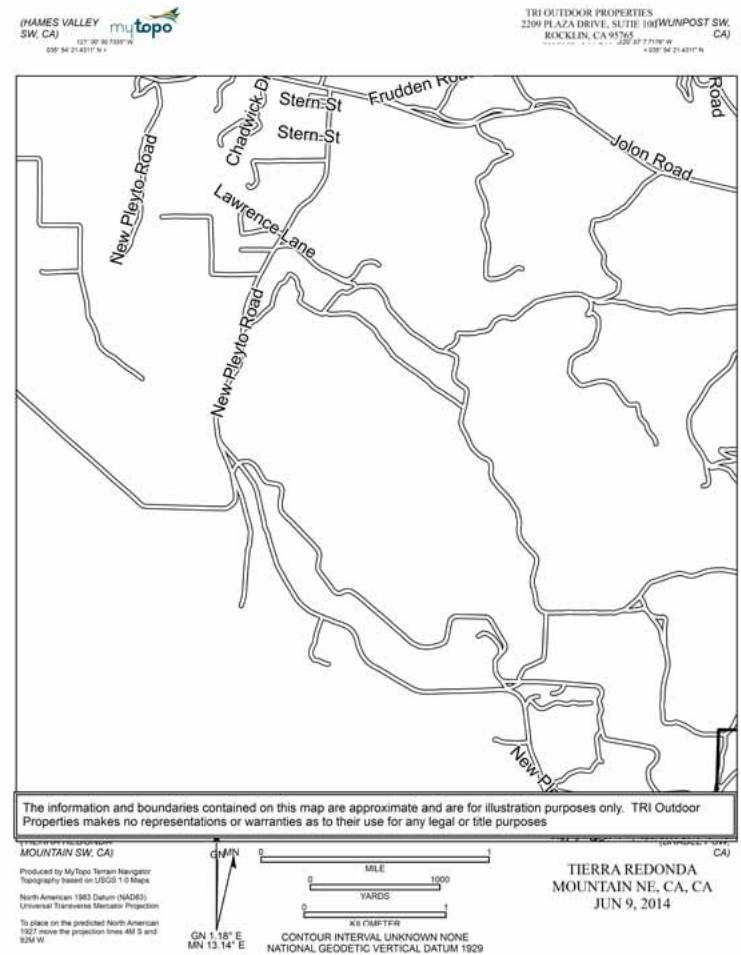
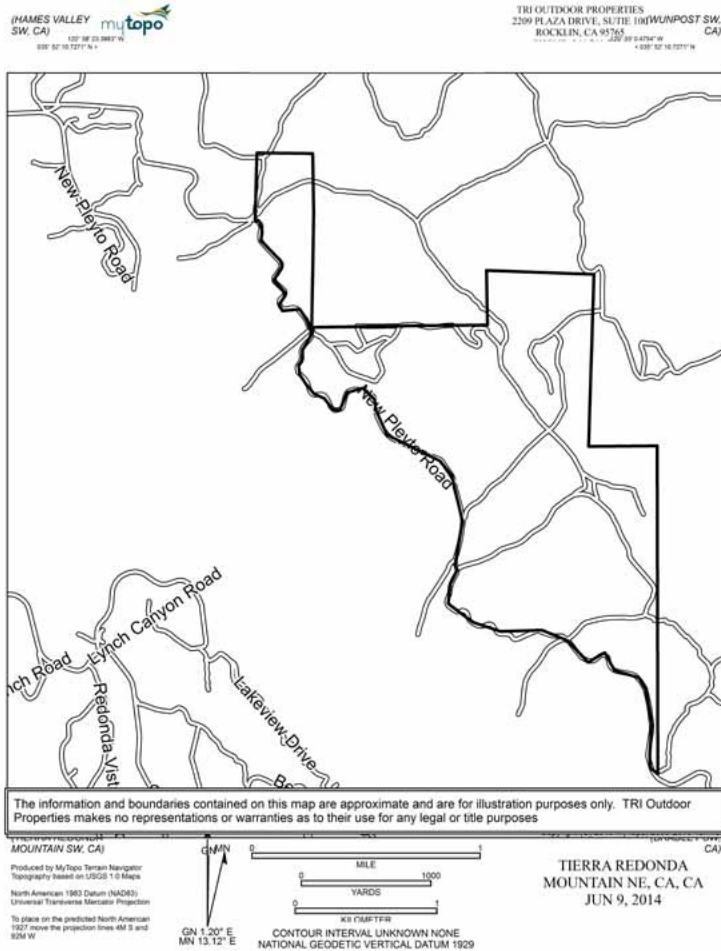
*Building Great Relationships Between People and the Outdoors*

SERVING  
NORTHERN & CENTRAL  
CALIFORNIA



# STIMSON RANCH #1

Monterey County +/-1,035.18 acres



## TRI Outdoor Properties

LAND BROKERAGE / Recreational · Agricultural · Conservation

A Division of TRI Commercial Real Estate

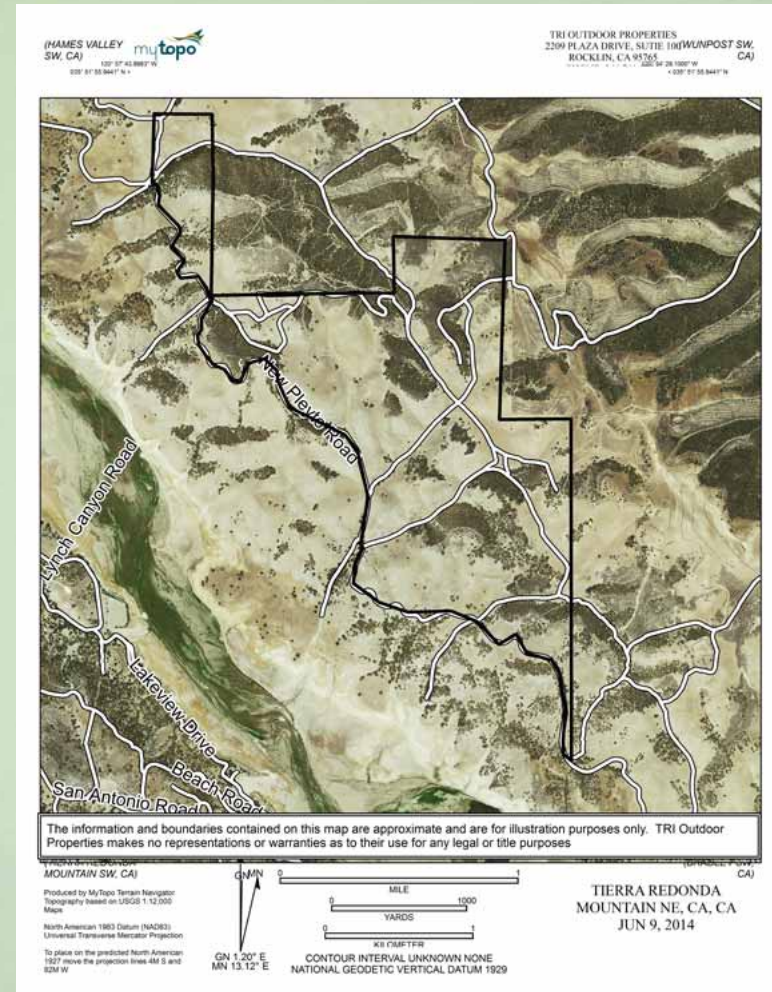
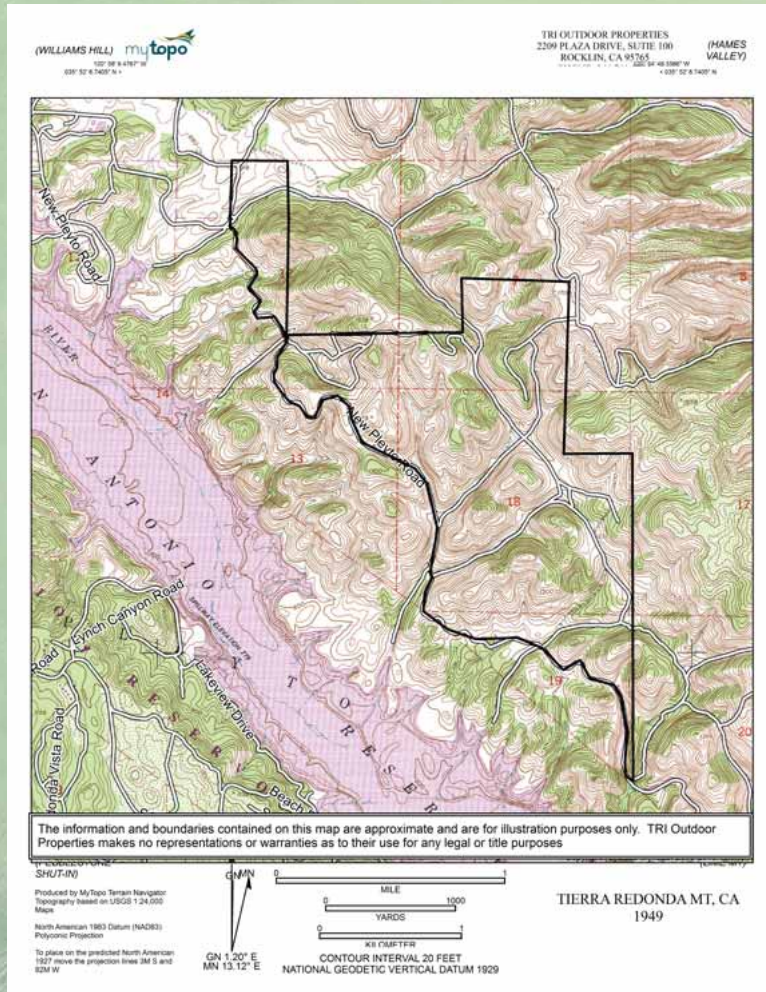
*Building Great Relationships Between People and the Outdoors*

SERVING  
NORTHERN & CENTRAL  
CALIFORNIA



# STIMSON RANCH #1

Monterey County +/-1,035.18 acres



## TRI Outdoor Properties

LAND BROKERAGE / Recreational · Agricultural · Conservation

A Division of TRI Commercial Real Estate

*Building Great Relationships Between People and the Outdoors*

SERVING  
NORTHERN & CENTRAL  
CALIFORNIA



# STIMSON RANCH #1

*Monterey County +/-1,035.18 acres*

## **TRI** *Outdoor Properties*

LAND BROKERAGE | Recreational · Agricultural · Conservation  
A Division of TRI Commercial Real Estate Services, Inc.

Contact:

**Mike Kuppenbender**, SIOR, CCIM, ALC  
BRE: 00811112

**Olen Zirkle**, ALC  
BRE: 01190000

**Tel:** 866.761.7930

**Fax:** 916.960.5799

2209 Plaza Drive, Suite 100  
Rocklin, CA 95765

[www.trioutdoorproperties.com](http://www.trioutdoorproperties.com)



## **TRI** *Outdoor Properties*

LAND BROKERAGE / Recreational · Agricultural · Conservation

A Division of TRI Commercial Real Estate

*Building Great Relationships Between People and the Outdoors*

**SERVING  
NORTHERN & CENTRAL  
CALIFORNIA**