

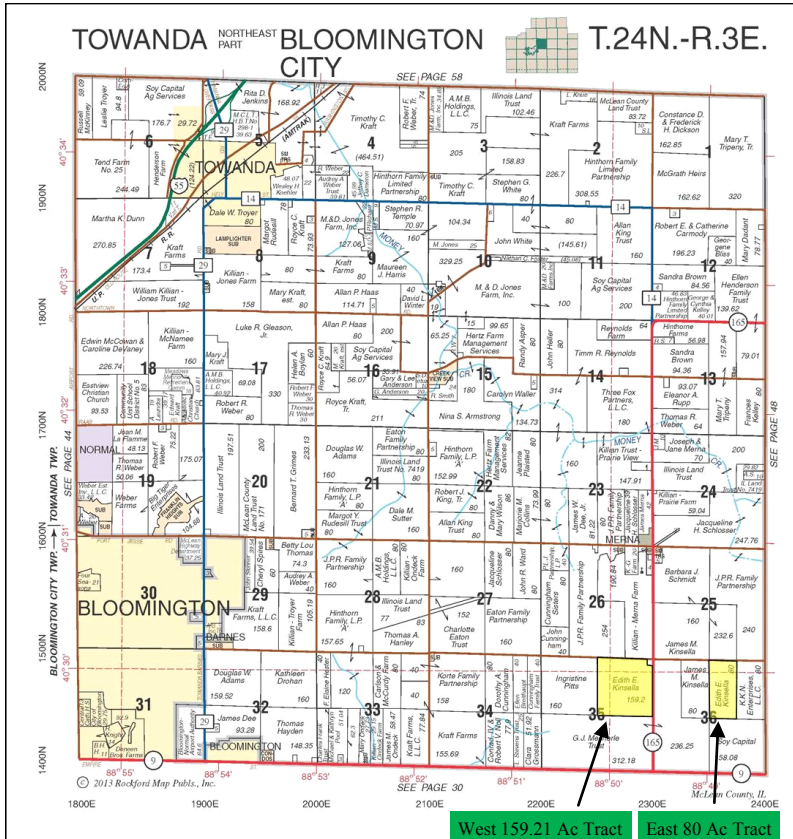
# HAROLD & EDITH KINSELLA FARM

239.21+/- Acres in Towanda Township  
McLean County, Illinois



A DIVISION OF SOY CAPITAL BANK & TRUST COMPANY

## FARMLAND FOR SALE



Reprinted with Permission from the Rockford Map



### LOCATION:

- 4 miles east of Bloomington, Illinois
- 135 miles southwest of "The Loop" Chicago, IL

### LISTING PRICE:

**\$12,400/acre or \$2,966,204.00**

### FARM INFORMATION:

- FSA Cropland Acres 237.7
- Includes 63'x42' pole metal machine shed
- **Weighted Soil Productivity Index:**
  - 159.21 Acre Tract = 138.8
  - 80 Acre Tract = 139.5
- **Primary Soils:** Sable, Ipava, Osco and Catlin soils.
- 5 Year Actual Average Yields
 

Corn - 208.1
Soybeans - 60.3

**Call us for a complete brochure with details:**

**John Feit, Broker**

[john.feit@frontier.com](mailto:john.feit@frontier.com)

(309) 838-4700

**V. Ross Albert, Broker**

[ralbert@soybank.com](mailto:ralbert@soybank.com)

(309)665-095

**David E. Klein, Managing Broker**

[dklein@soybank.com](mailto:dklein@soybank.com)

(800) 532-LAND

6 Heartland Drive, Suite A—Bloomington, IL 61702

The information provided is believed to be accurate and representative. However, it is subject to verification and no liability for error or omissions is assumed. The property is being sold in "as is" condition with no financing or inspection contingencies. There are no warranties, expressed or implied, as to the information contained herein and it is recommended that all buyers make an independent inspection of the property at their own risk, with the assistance of the listing broker. Soy Capital Ag Services, a division of Soy Capital Bank and Trust Company is the listing Broker, John Feit and V. Ross Albert, Real Estate Brokers, are the designated agents and represent the Sellers in this transaction. Soy Capital, the Sellers and designated agent expressly disclaim any liability for errors, omissions or changes regarding any information provided. Potential buyers are urged to rely solely upon their own inspections and opinions in preparing to purchase this property and are expressly advised to not rely on any representations made by the Seller or their agents. This farm is under a crop share lease for 2015 with the Seller planning to retain the landowner's share of the crop. Call for details.

[www.soycapital.com](http://www.soycapital.com) - Twitter: [@soycapitalag](https://twitter.com/soycapitalag)