

# Kansas, Comanche County

## 290 acres +/-



Brown Realty Co. of Rayville, Inc.  
Jerry Brown, Broker



[www.brownrealtyco.com](http://www.brownrealtyco.com)  
318.728.9544





## DESCRIPTION

### **290 acres +/- Comanche County, Kansas**

This tract has great things to offer. It has 2 box stands in place with food plots as well as a nice CRP payment of \$2023.00 per year for approximately 7 more years. There is great cover in the bottoms with big trees to bow hunt as well as thick cover for bedding. The west side is bordered by the golf course and coldwater lake property that is not hunted, including the 200 acre lake. There have been many trophy deer killed on this 290 acres. Call for details.

**Brown Realty Co. of Rayville, Inc.**  
Jerry Brown, Broker



**[www.brownrealtyco.com](http://www.brownrealtyco.com)**  
**318.728.9544**



## PROPERTY LOCATION

This property is located in Comanche County, Kansas 1 mile south of Coldwater, KS with access off of Hwy 183.



Brown Realty Co. of Rayville, Inc.  
Jerry Brown, Broker



[www.brownrealtyco.com](http://www.brownrealtyco.com)  
318.728.9544



## WILDLIFE

This property offers deer, turkey, quail, and doves hunting.



Brown Realty Co. of Rayville, Inc.  
Jerry Brown, Broker



[www.brownrealtyco.com](http://www.brownrealtyco.com)  
318.728.9544





## IMPROVEMENTS

2 – box stands and food plots, and CRP payments

### CRP Information

Acres - 62.5 acres +/-

Annual Payment - \$2,023.00

Date of Entry - 10/1/2011

Date of Expiration - 9/30/2021

Brown Realty Co. of Rayville, Inc.  
Jerry Brown, Broker



[www.brownrealtyco.com](http://www.brownrealtyco.com)  
318.728.9544





### PRICE

Total Price of this property is - **\$580,000.00**

Price Per Acre of this property is - **\$2,000.00**

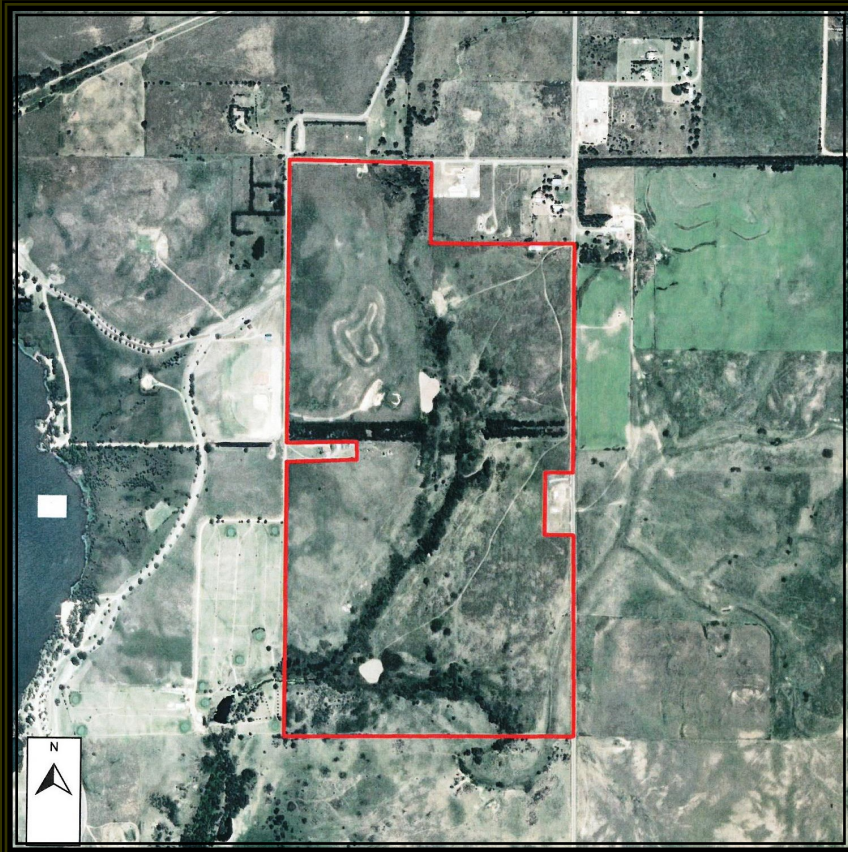
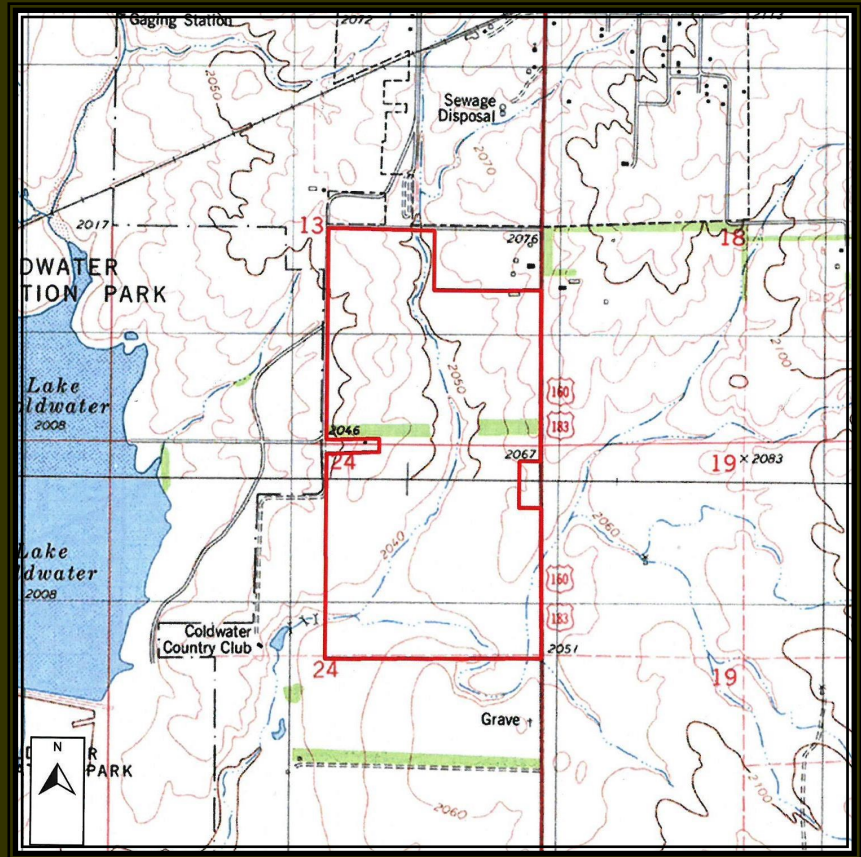
Brown Realty Co. of Rayville, Inc.  
Jerry Brown, Broker



[www.brownrealtyco.com](http://www.brownrealtyco.com)  
318.728.9544



# TOPOGRAPHY MAP



# AERIAL MAP

Brown Realty Co. of Rayville, Inc.  
Jerry Brown, Broker



[www.brownrealtyco.com](http://www.brownrealtyco.com)  
318.728.9544



# Kansas, Comanche County

## 290 acres +/-



### CONTACT INFORMATION

For more information on this property contact:

**Jim Rolfe, Agent**

**Cell: 318.376.5576**

**Office: 318.728.9544**

**Email: [jrolfe@brownrealtyco.com](mailto:jrolfe@brownrealtyco.com)**

**Website: [www.brownrealtyco.com](http://www.brownrealtyco.com)**