

Kansas, Bourbon County

317 acres +/-



Brown Realty Co. of Rayville, Inc.
Jerry Brown, Broker



www.brownrealtyco.com
318.728.9544



DESCRIPTION

317 acres +/- Bourbon County, Kansas

They call this tract Turkey Mountain for a reason. It is a fine tract with CRP cover and Timber. It is in one of the largest blocks of woods in the area that is holding power for turkey and trophy deer. The heads are on the wall to prove that this has been a spectacular hunting place. It also has good access from Fern Rd. and does not border any other public roads. A must see!!!

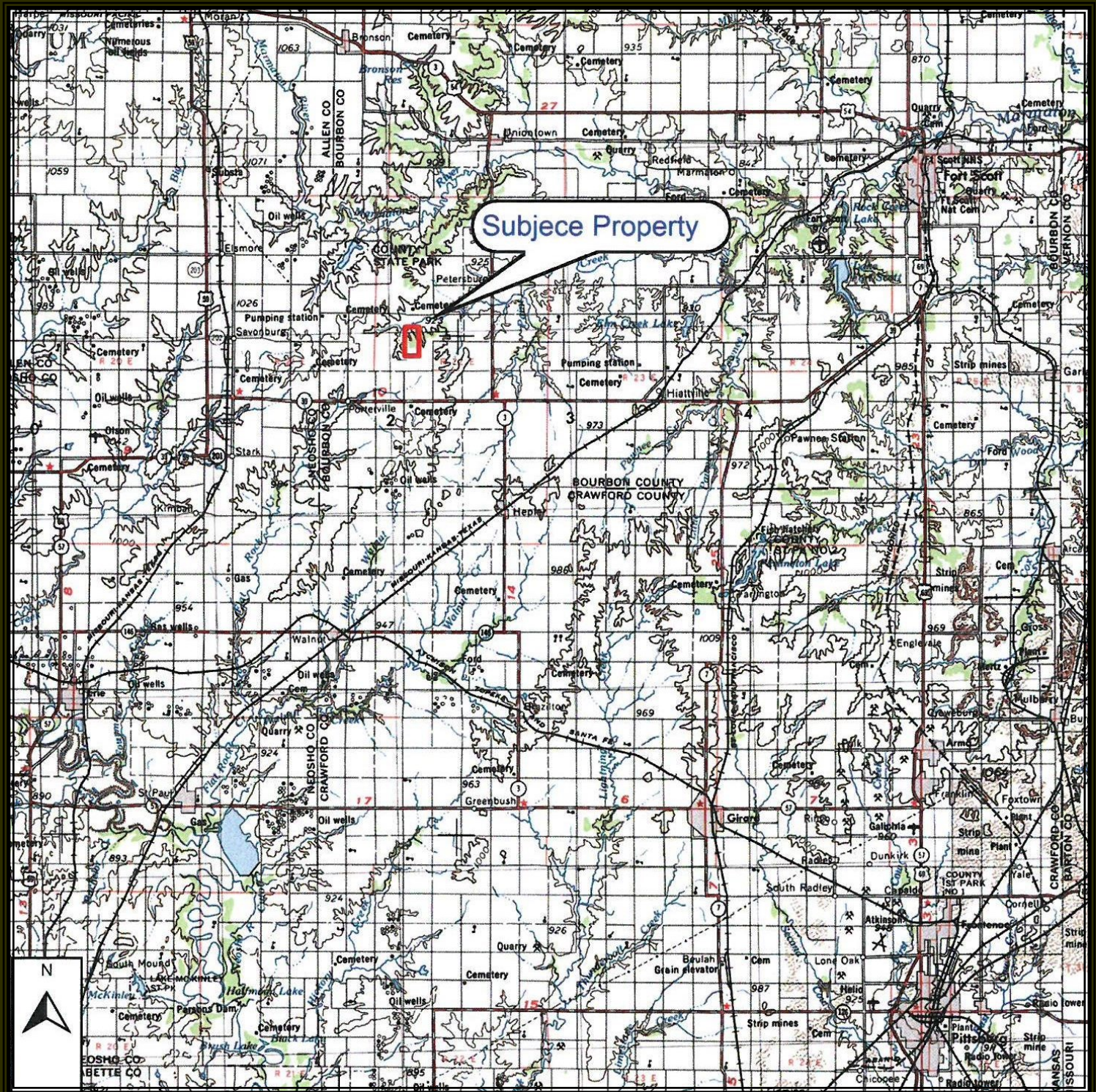
Brown Realty Co. of Rayville, Inc.
Jerry Brown, Broker



www.brownrealtyco.com
318.728.9544

PROPERTY LOCATION

This property is located in Bourbon County, Kansas in Uniontown, KS with access off of Hwy 3 and Fern Rd.



Brown Realty Co. of Rayville, Inc.
Jerry Brown, Broker



www.brownrealtyco.com
318.728.9544

WILDLIFE

This property offers deer, turkey, quail, doves, and squirrel hunting.



Brown Realty Co. of Rayville, Inc.
Jerry Brown, Broker



www.brownrealtyco.com
318.728.9544



IMPROVEMENTS

50% minerals conveyed, a couple of box stands and feeders, CRP payments, and timber

CRP Information

Acres – 71.8 acres +/-

Date of Entry – 10/1/2003

Date of Expiration – 9/30/2018

Annual Payment - \$3,638.00

Brown Realty Co. of Rayville, Inc.
Jerry Brown, Broker



www.brownrealtyco.com
318.728.9544



PRICE

Total Price of this property is - **\$951,000.00**

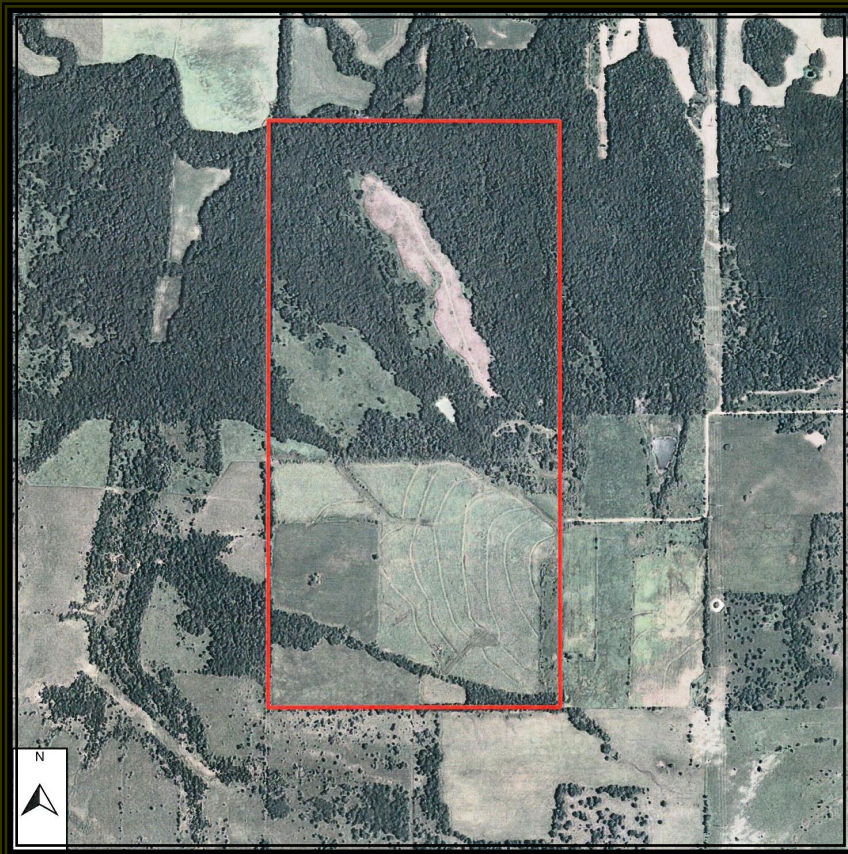
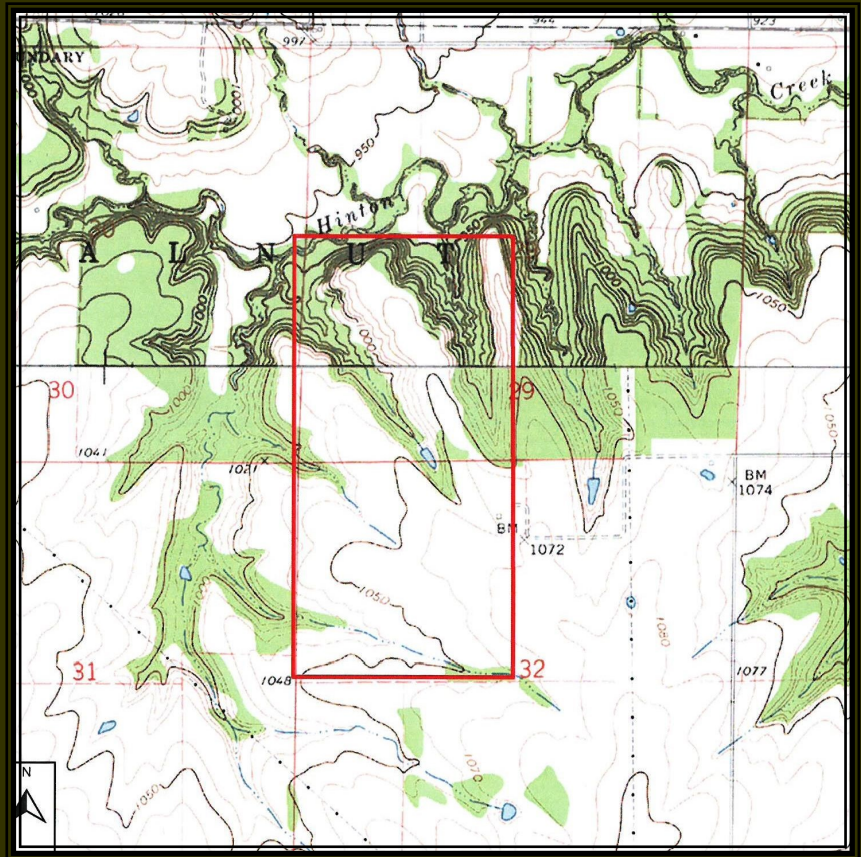
Price Per Acre of this property is - **\$3,000.00**

Brown Realty Co. of Rayville, Inc.
Jerry Brown, Broker



www.brownrealtyco.com
318.728.9544

TOPOGRAPHY MAP



AERIAL MAP

Brown Realty Co. of Rayville, Inc.
Jerry Brown, Broker



www.brownrealtyco.com
318.728.9544

Kansas, Bourbon County

317 acres +/-



CONTACT INFORMATION

For more information on this property contact:

Jim Rolfe, Agent

Cell: 318.376.5576

Office: 318.728.9544

Email: jrolfe@brownrealtyco.com

Website: www.brownrealtyco.com