

# Arkansas, Mississippi County

623 acres +/-



Brown Realty Co. of Rayville, Inc.  
Jerry Brown, Broker



[www.brownrealtyco.com](http://www.brownrealtyco.com)  
318.728.9544



## DESCRIPTION

### **623 acres +/- Mississippi County, Arkansas**

Farmland tracts with 95% tillable ground located near Dyess. The farm consist of five separate tracts in close proximity to each other all having good access. The farm is mostly irrigated, has four turbine wells and two submersible wells that provide plenty of irrigation water. Crop bases include 390.5 acres of various grains and 24.5 acres of cotton. The current rental arrangement is 25% share and West Memphis is only 40 miles.

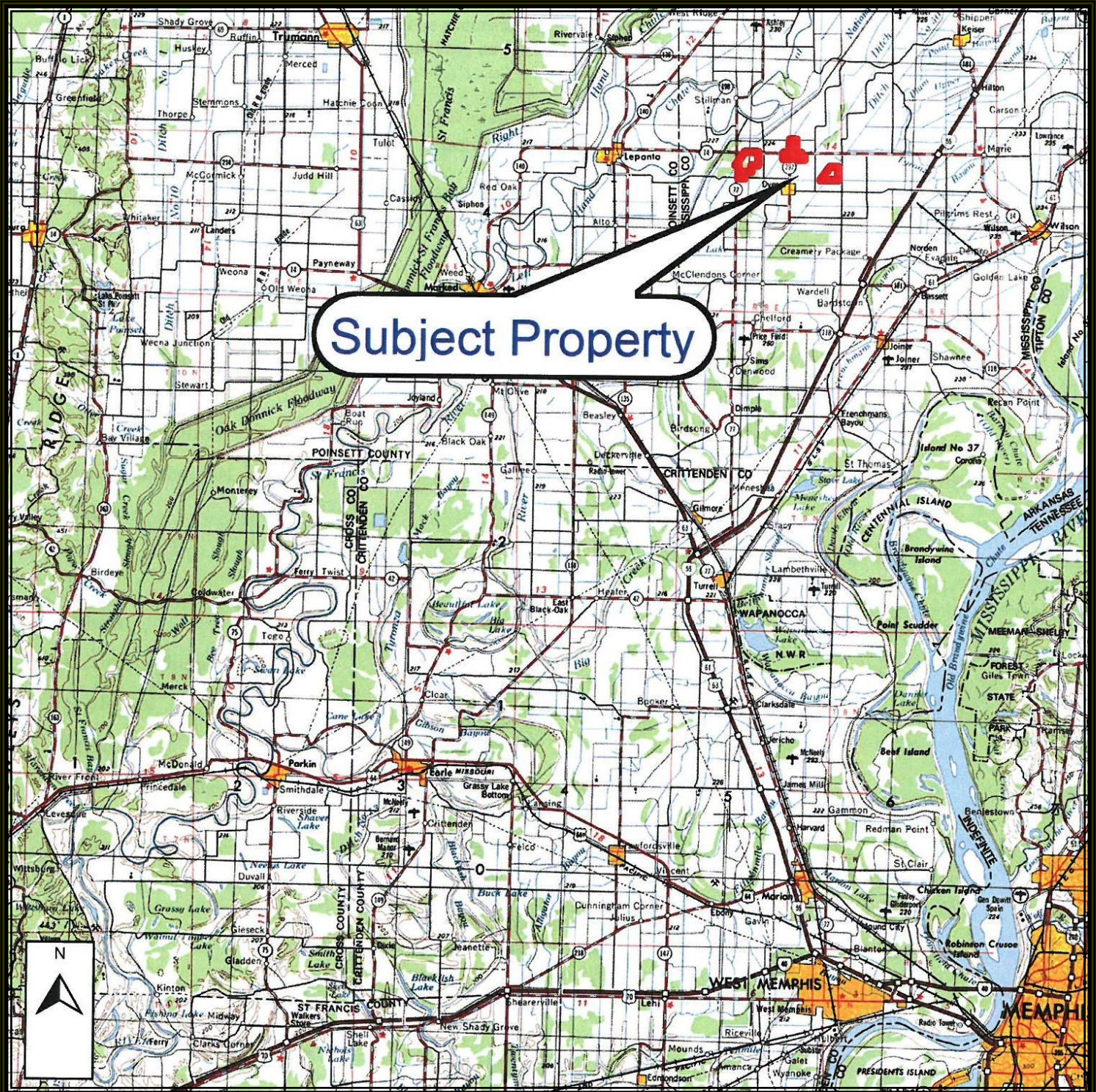
Brown Realty Co. of Rayville, Inc.  
Jerry Brown, Broker



[www.brownrealtyco.com](http://www.brownrealtyco.com)  
318.728.9544

# PROPERTY LOCATION

This property is located in Mississippi County, Arkansas close to East Central Arkansas



Brown Realty Co. of Rayville, Inc.  
Jerry Brown, Broker



[www.brownrealtyco.com](http://www.brownrealtyco.com)  
318.728.9544

## FARMLAND

590.9 acres of Cropland

**Bases** - Cotton, Rice, Wheat, Grain Sorghum, and Soybeans

**Soil Types** - Sharkey-Steel Complex, Tunica Soil



Brown Realty Co. of Rayville, Inc.  
Jerry Brown, Broker



[www.brownrealtyco.com](http://www.brownrealtyco.com)  
318.728.9544



Brown Realty Co. of Rayville, Inc.  
Jerry Brown, Broker



[www.brownrealtyco.com](http://www.brownrealtyco.com)  
318.728.9544



### PRICE

Total Price of this property is - **\$2,928,100.00**

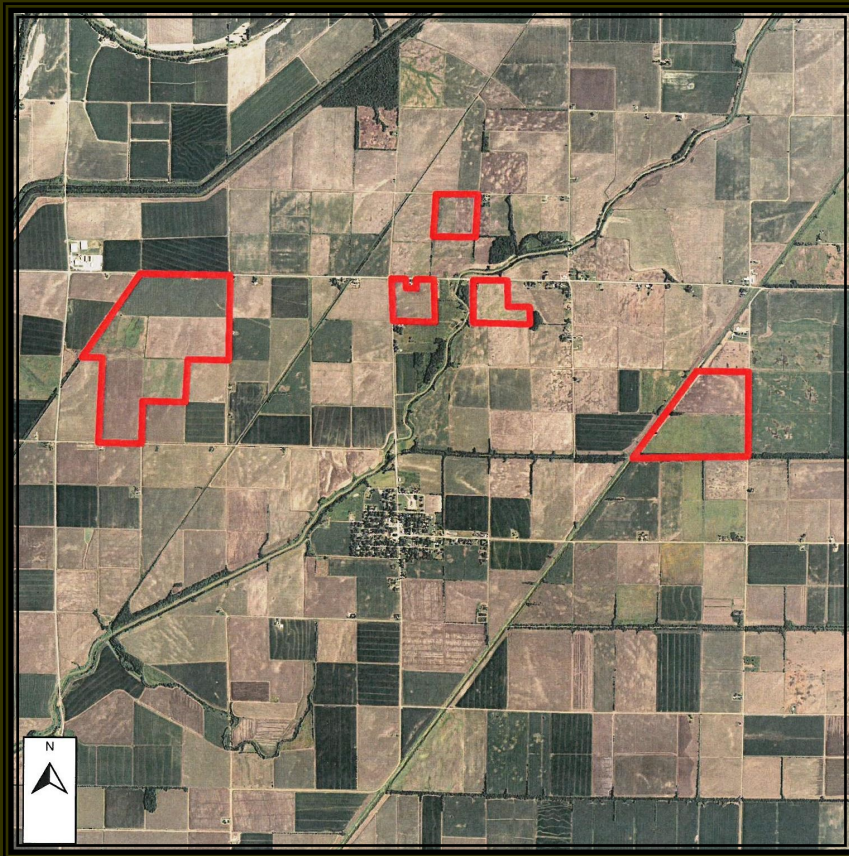
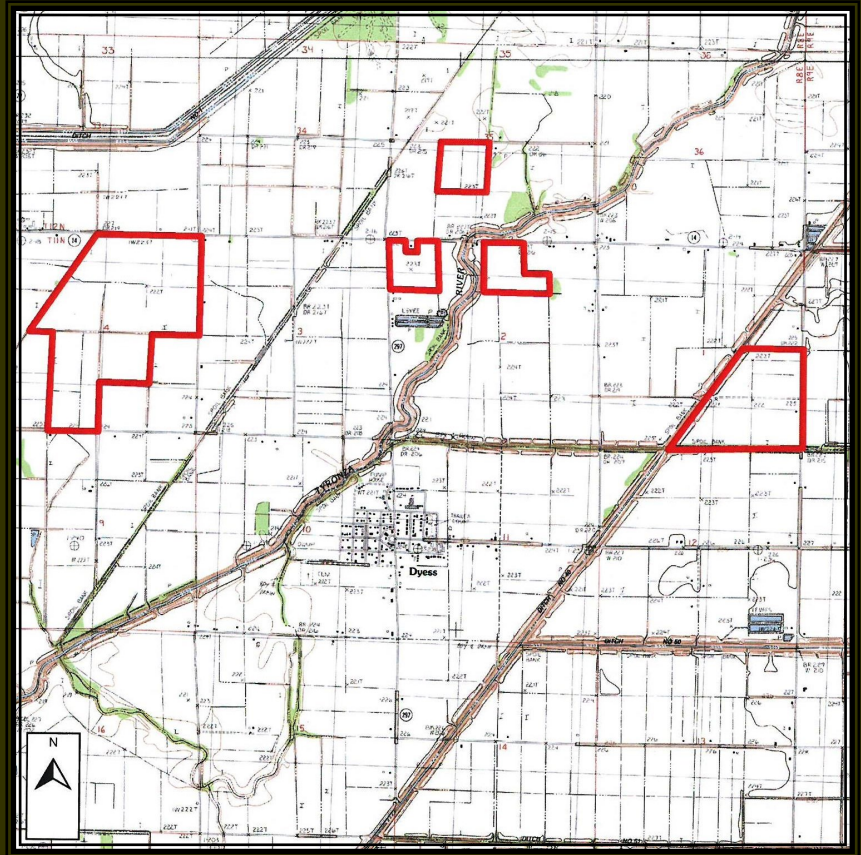
Price Per Acre of this property is - **\$4,700.00**

Brown Realty Co. of Rayville, Inc.  
Jerry Brown, Broker



[www.brownrealtyco.com](http://www.brownrealtyco.com)  
318.728.9544

# TOPOGRAPHY MAP



# AERIAL MAP

Brown Realty Co. of Rayville, Inc.  
Jerry Brown, Broker



[www.brownrealtyco.com](http://www.brownrealtyco.com)  
318.728.9544

# Arkansas, Mississippi County

## 623 acres +/-



### CONTACT INFORMATION

For more information on this property contact:

**Mike Watson, Agent**

**Cell: 318.547.7386**

**Office: 318.728.9544**

**Email: [mwatson@brownrealtyco.com](mailto:mwatson@brownrealtyco.com)**

**Website: [www.brownrealtyco.com](http://www.brownrealtyco.com)**