

MEXICAN LAKE ROAD RECREATIONAL RETREAT

FOR SALE

Multiple Recreation
including Biking, ATV,
Hiking and Camping

San Benito County

±160 Acres

~~PRICE: \$175,000~~

PRICE REDUCED!

\$150,000

PRICE
REDUCED!

San Benito County Land for Sale. 160 acres of deeded land for sale located in the Clear Creek Management Area. Property has mixed terrain consisting of mountains, valleys and seasonal streams. The site has several amenities including electric power, springs and seasonal creeks. Property is well suited for a variety of recreational uses including ATVs, dirt biking, hiking, hunting and camping. Property is surrounded by BLM land that is available for additional restricted uses.

TRI *Outdoor Properties*

Building Great Relationships Between People and the Outdoors

Participating with
Cabela's TROPHY PROPERTIES™
www.CabelasTrophyProperties.com

MEXICAN LAKE ROAD RECREATIONAL RETREAT



Mixed terrain including mountains, canyons and valleys



09.06.2011

TRI *Outdoor Properties*

Building Great Relationships Between People and the Outdoors

Participating with
Cabela's TROPHY PROPERTIES™
www.CabelasTrophyProperties.com

Address: Mexican Lake Road
Cross Street: Wild Ass Road

APN: 030-230-003
Acres: +/-160
Elevation: 4,500 ft
Longitude: -120.6177711
Latitude: 36.3571817
Zoning: AR
MLS: 110525338
Price: \$150,000
Terms: Available

Amenities:

Many campsites, developed road system,
several springs, power to site.

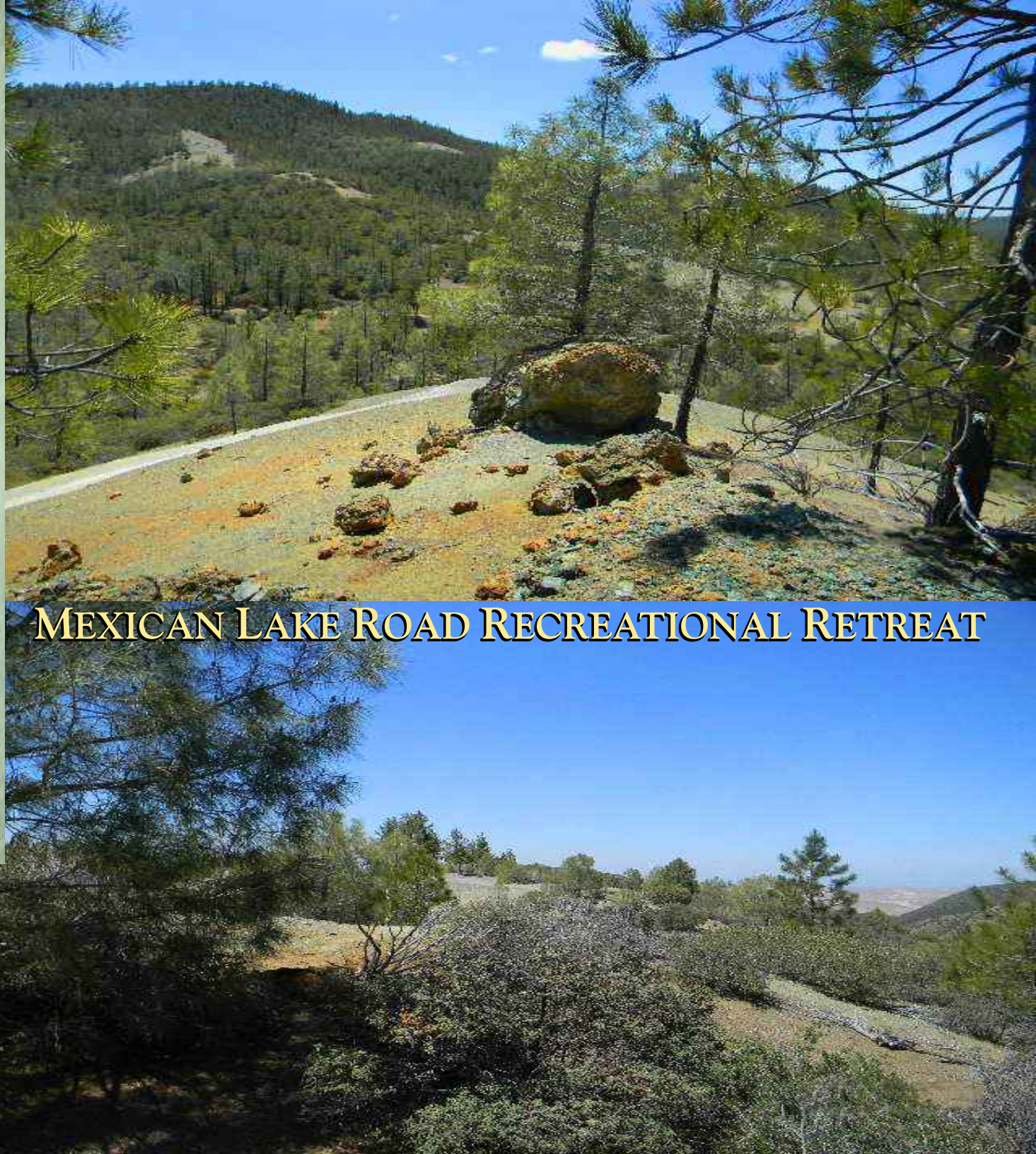
TRI *Outdoor Properties*

*Building Great Relationships
Between People and the Outdoors*

Participating with

Cabela's TROPHY PROPERTIES™

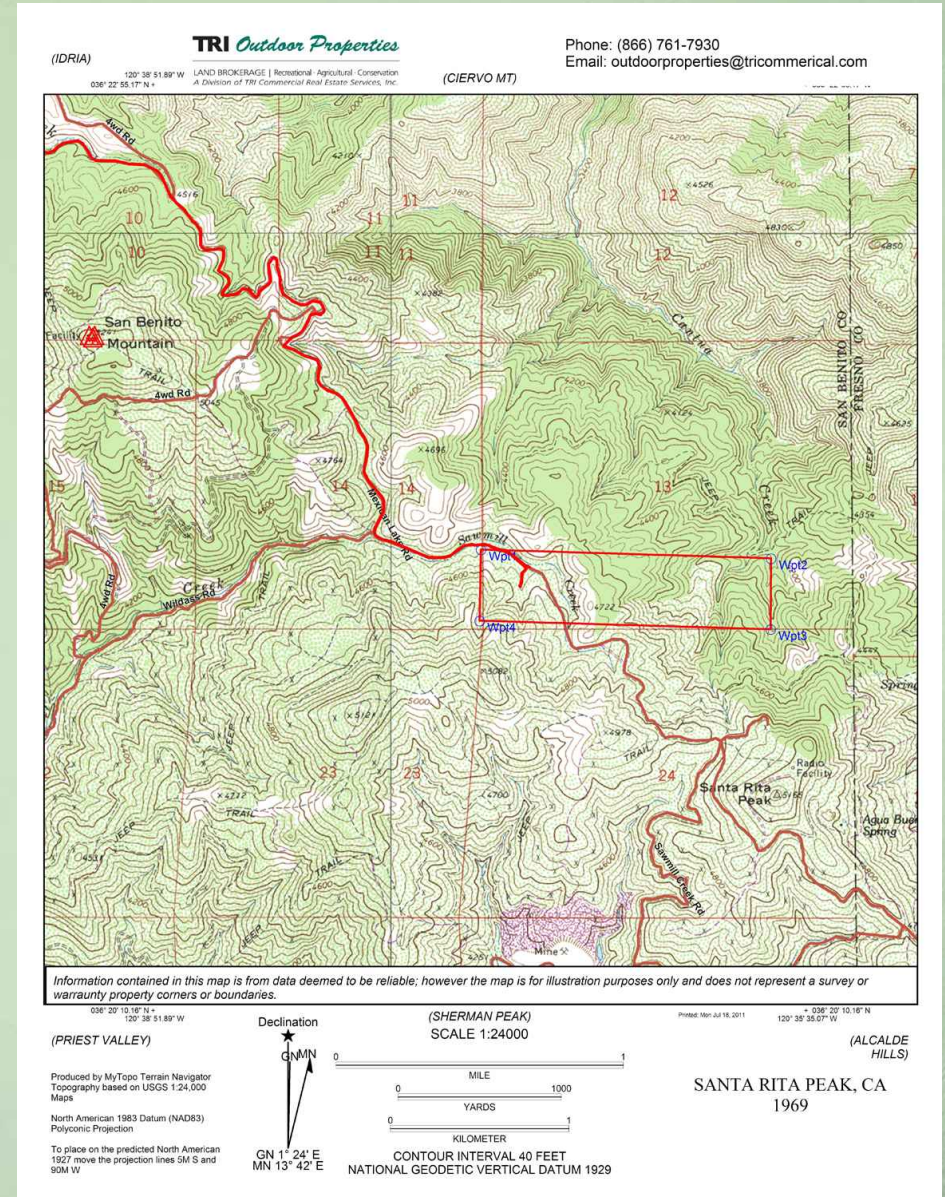
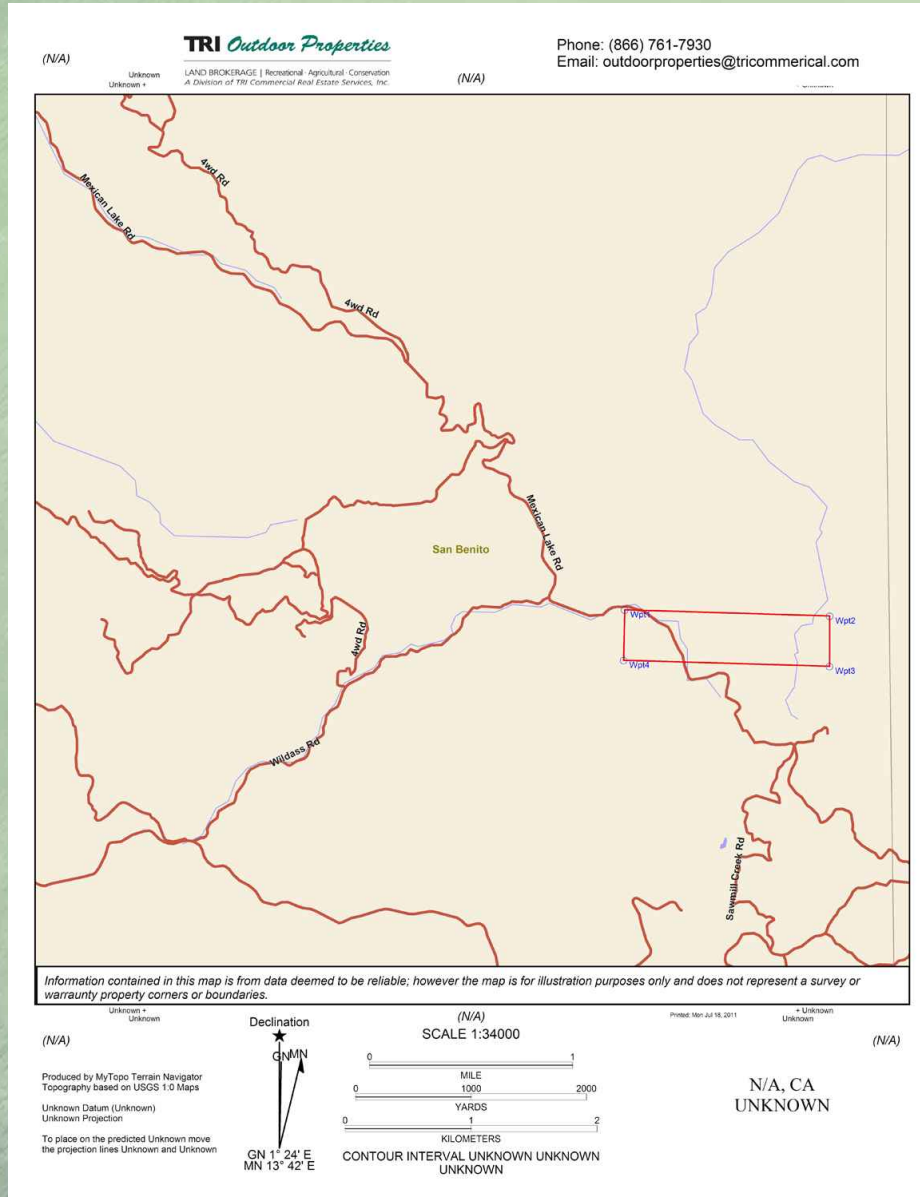
www.CabelasTrophyProperties.com



MEXICAN LAKE ROAD RECREATIONAL RETREAT

MEXICAN LAKE ROAD RECREATIONAL RETREAT

San Benito County, ±160 Acres



TRI Outdoor Properties

Building Great Relationships Between People and the Outdoors

Participating with
Cabela's TROPHY PROPERTIES™
 www.CabelasTrophyProperties.com

MEXICAN LAKE ROAD RECREATIONAL RETREAT

TRI Outdoor Properties

LAND BROKERAGE | Recreational · Agricultural · Conservation
A Division of TRI Commercial Real Estate Services, Inc.

Contact:
Mike Kuppenbender, SIOR, CCIM, ALC
BRE: 00811112

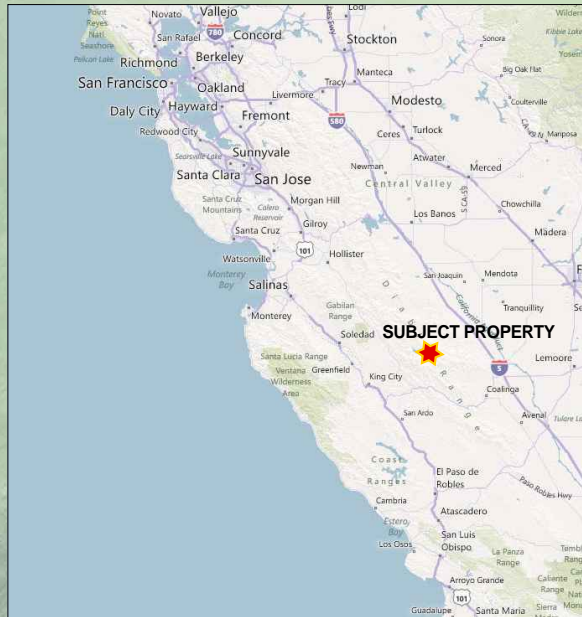
Olen Zirkle, ALC
BRE: 01190000

Tel ^ 866.761.7930

Fax ^ 916.960.5799

2209 Plaza Drive, Suite 100
Rocklin, CA 95765

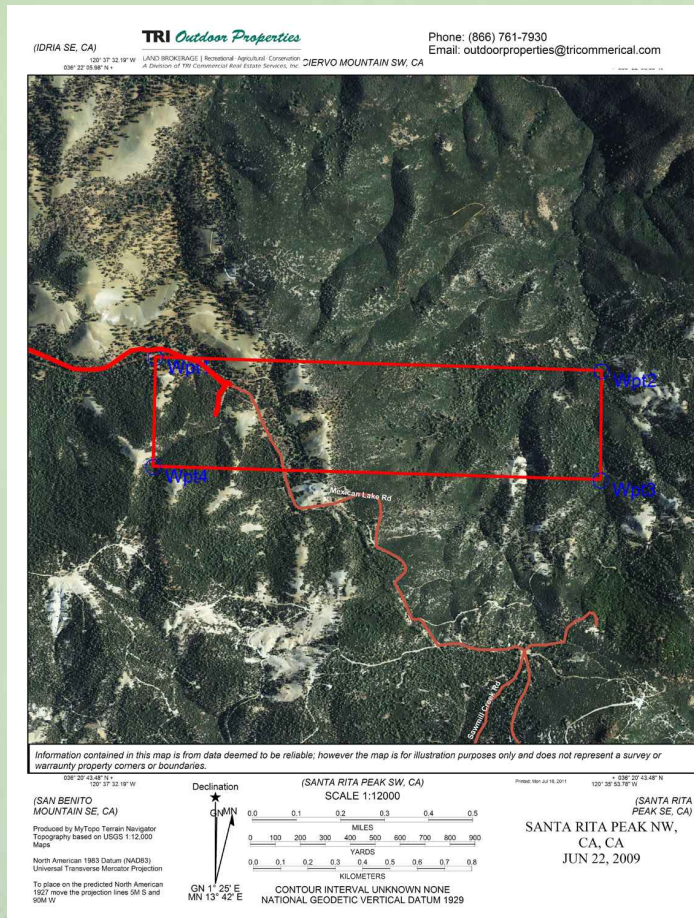
www.trioutdoorproperties.com



San Benito County, ±160 Acres

Amenities

- * *Improved Roads*
- * *Many Developed Campsites*
- * *Several Year Round Springs*
- * *Power To Site*



TRI Outdoor Properties

Building Great Relationships Between People and the Outdoors

The information in this document was obtained from sources we deem reliable; however, no warranty or representation, expressed or implied, is made as to the accuracy of the information contained herein.

All information should be verified by the recipient prior to purchase or execution of legal documents.

Participating with

Cabela's TROPHY PROPERTIES™

www.CabelasTrophyProperties.com