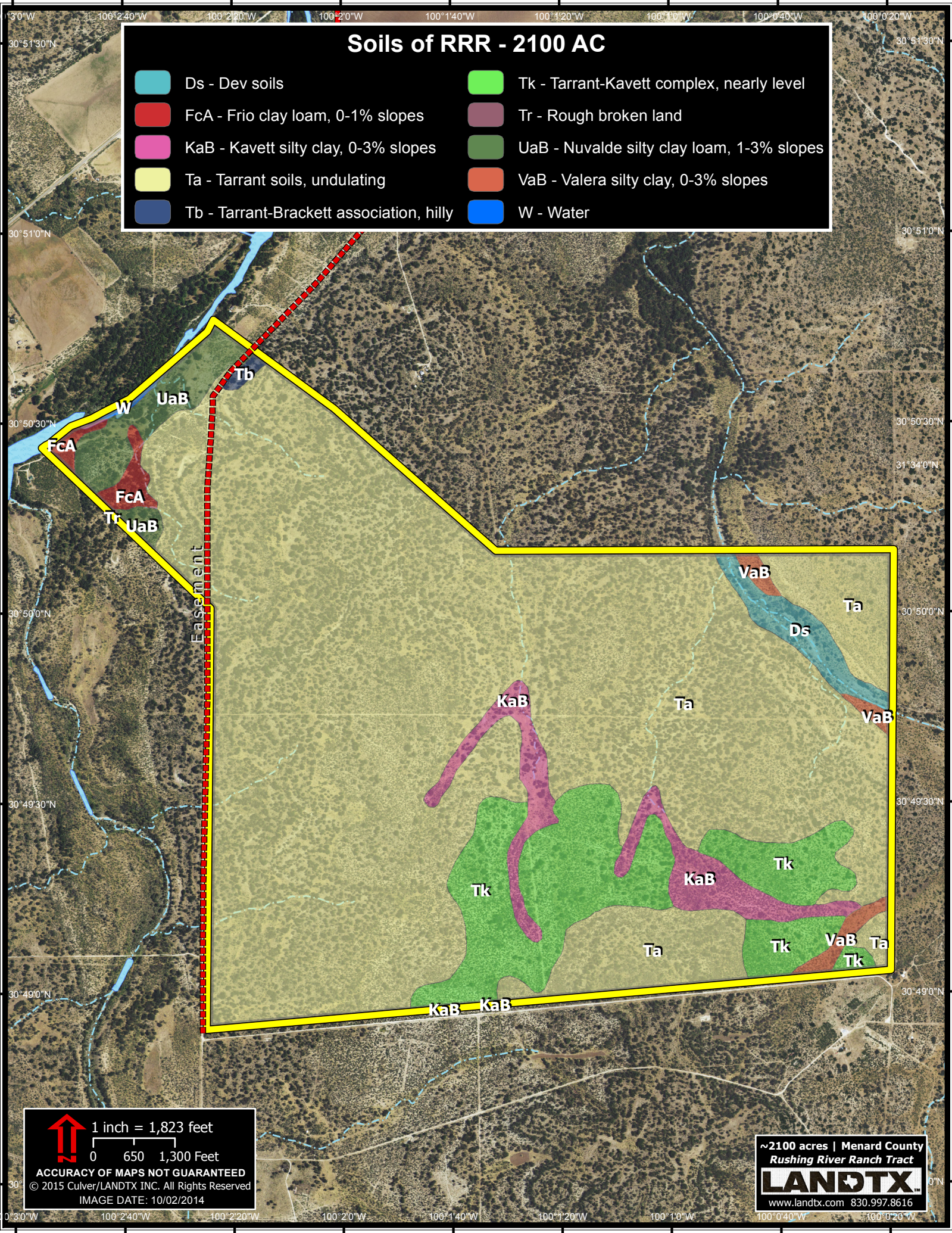


Soils of RRR - 2100 AC

- | | |
|--|--|
|  Ds - Dev soils |  Tk - Tarrant-Kavett complex, nearly level |
|  FcA - Frio clay loam, 0-1% slopes |  Tr - Rough broken land |
|  KaB - Kavett silty clay, 0-3% slopes |  UaB - Nuvalde silty clay loam, 1-3% slopes |
|  Ta - Tarrant soils, undulating |  VaB - Valera silty clay, 0-3% slopes |
|  Tb - Tarrant-Brackett association, hilly |  W - Water |



1 inch = 1,823 feet

0 650 1,300 Feet

ACCURACY OF MAPS NOT GUARANTEED

© 2015 Culver/LANDTX INC. All Rights Reserved

IMAGE DATE: 10/02/2014

~2100 acres | Menard County
Rushing River Ranch Tract

LANDTX
www.landtx.com 830.997.8616