

FOR SALE

RUSHCREEK TWP • LOGAN COUNTY

**Private Setting
with 38⁺ Acres**

PROPERTY INFORMATION

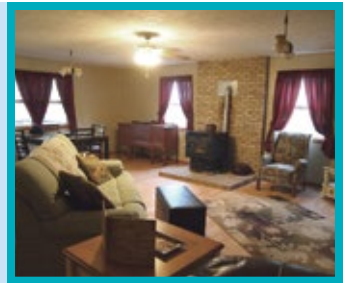
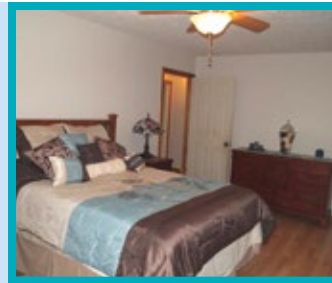
**LOCATION: 8 MILES NORTH OF RT 33 IN
BELLEFONTAINE, ALONG THE WEST SIDE OF US 68
ADDRESS: 9471 US 68 N, RUSHSYLVANIA, OHIO**

ZONING: AGRICULTURAL

SCHOOLS: BENJAMIN LOGAN LOCAL SCHOOL DISTRICT

ANNUAL TAXES: \$1,987.00

**27⁺ Tillable • 10⁺ Pasture
1⁺ Acre Homesite**



HOMESITE DETAILS

**2-Story home with 3 bedrooms,
2 baths, and full walkout basement.
Originally built as an Amish home,
200 amp service has been added
but it could easily be returned to
its original configuration. Heat is
provided by a pellet/corn stove and
additional propane heaters.**

**Outbuildings include: two barns,
and an insulated storage shed.**

HALDERMAN
REAL ESTATE
HLS# DMK-11614 (15)
SERVICES

800.424.2324 | www.halderman.com



DOWNLOAD!
Halderman Real Estate App
Available on Android & Apple iOS



DIEDRE KOIK
Urbana, OH
937-408-3647
dk@halderman.com