

Lee Co., AL

SEE PHOTOS
on web site!

www.cypruspartners.com

Reference # 322

More info at
334-321-1865

Land For Sale

5.11 acres +/-

\$29,900

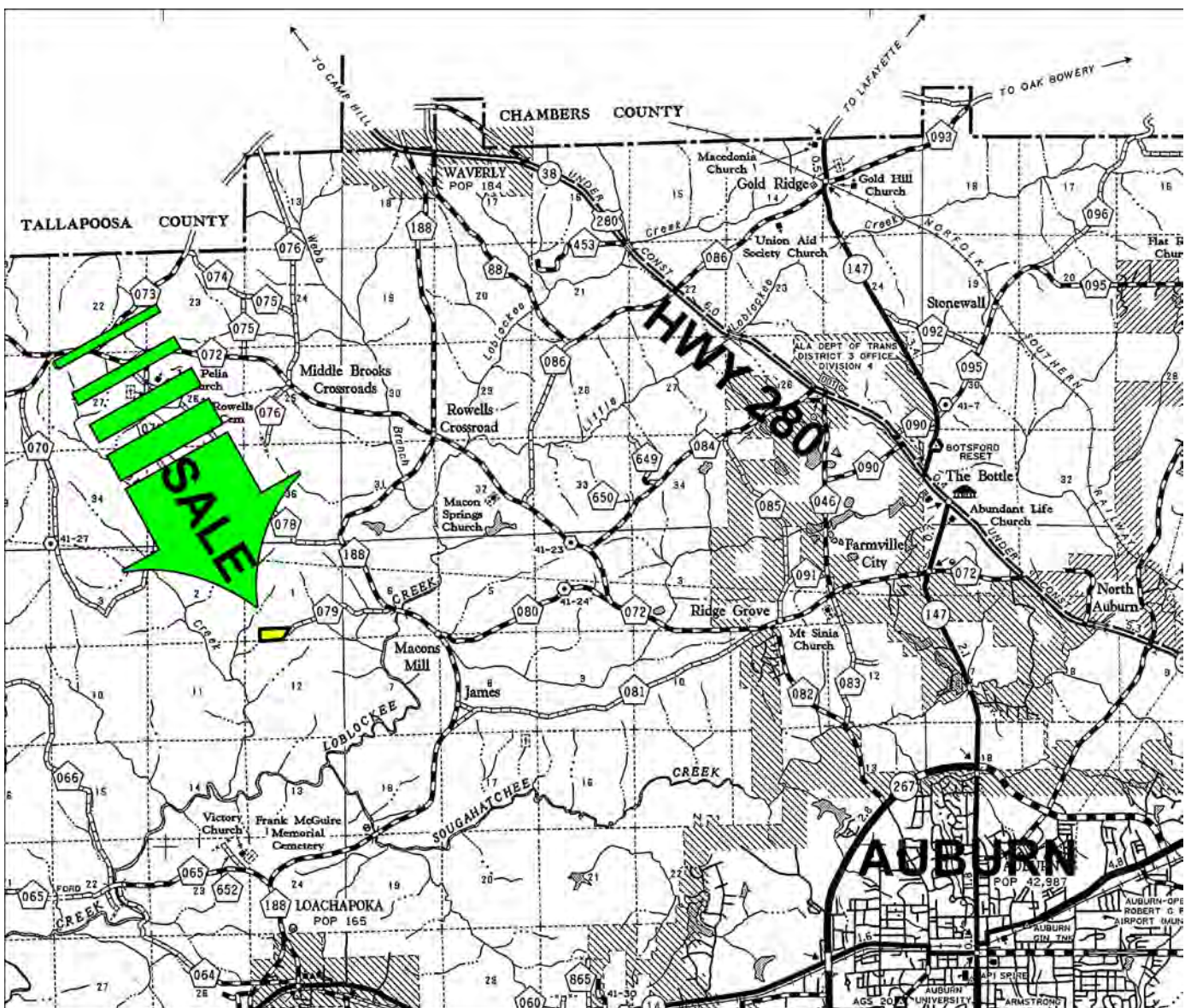
Exclusive Agent For Owner

CYPRUS
PARTNERS

P O Box 590045
Homewood, AL 35259

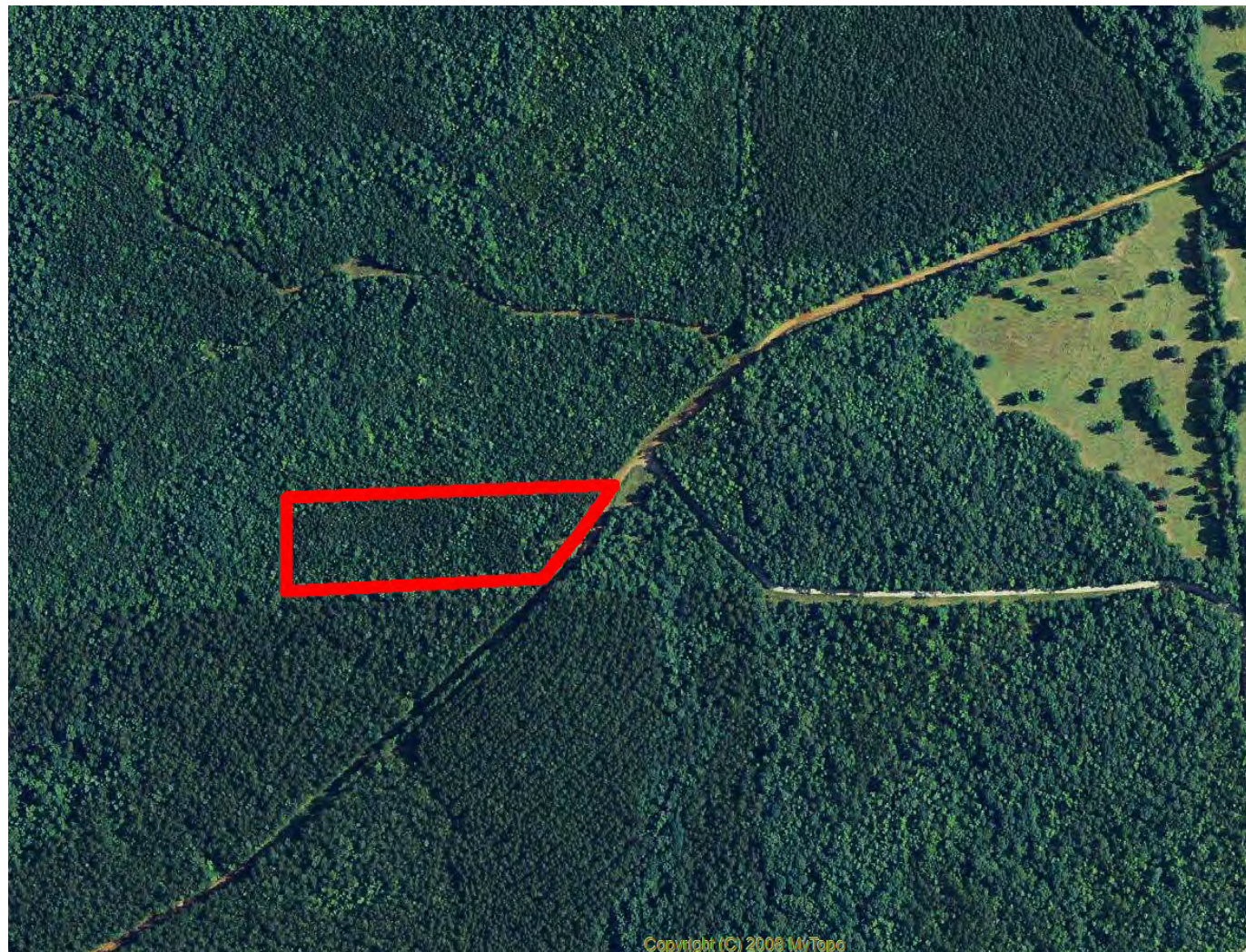
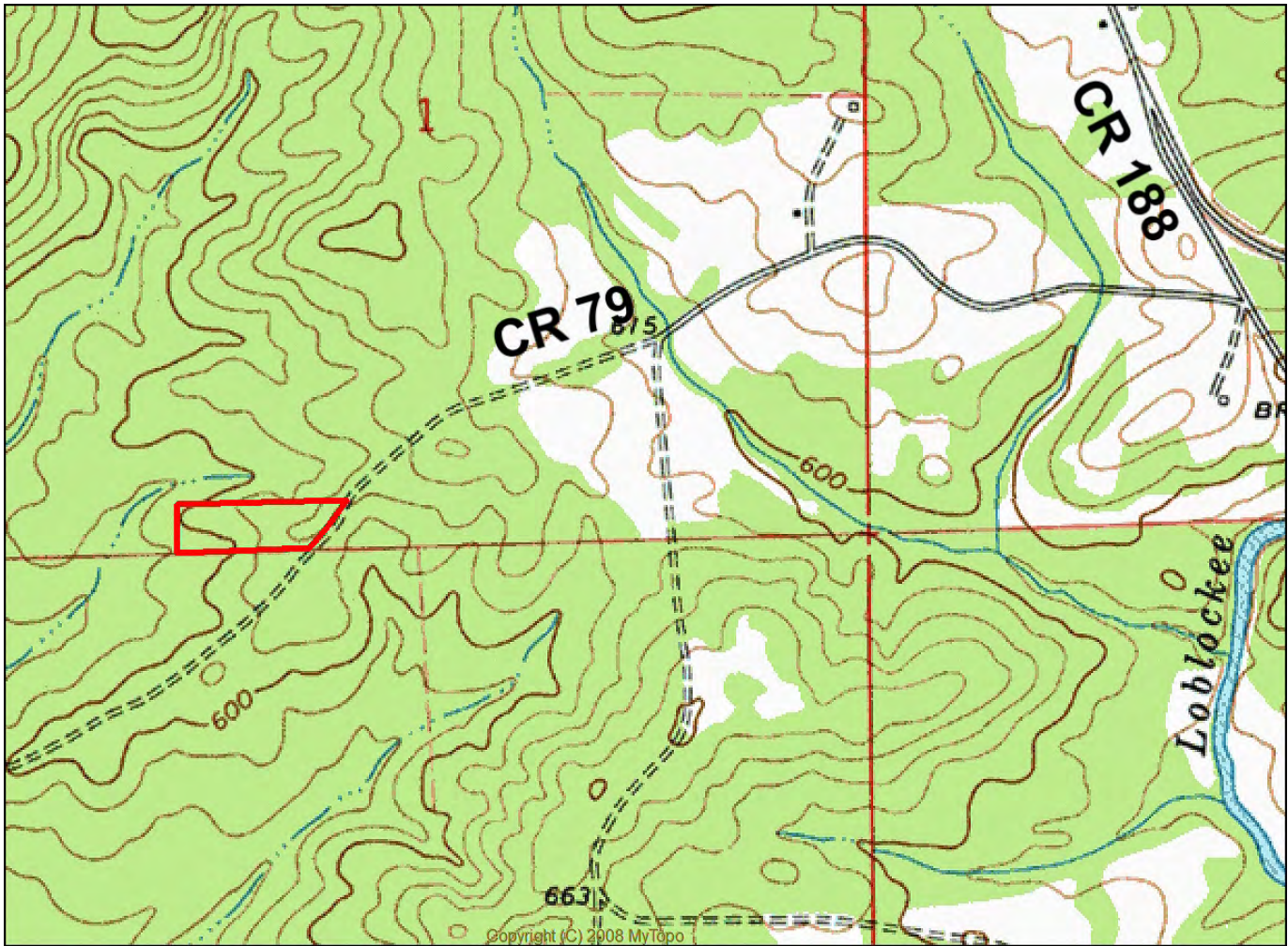
- Located in central Lee County about 10.2 miles west from Toomers Corner
- Access is on a county maintained gravel road. Maintenance ends at the property.
- Power is at the property. Water is nearby and obtainable but not to the property
- Timber is a beautiful mix of mature hardwood and pine timber
- No close neighbors, but there are other houses on the same road
- A rural setting with lots of wildlife in the area

All distances and acres are estimates and should be independently verified



Directions from Toomers Corner (South College and Magnolia Ave.): (24 minutes to the property)

From Toomers Corner go west on Magnolia Ave for 0.5 miles. Take a right on N. Donahue Dr. and go 4.1 miles to West Farmville Rd (Co. Rd 72). Take a left and go 1.8 miles to Co. Rd 80 (Bud Black Rd). Take a left and go 1.9 miles to Co. Rd. 188. Take a right and go 0.6 miles to Co. Rd. 79. Take a left and go 1.3 miles to the property. Look for a Cyprus Partners sign. You are welcome to look at the land on your own or you can set up an appointment. The property line is located at Lat: 33°46'44.06" N. Lon: 85°58'43.62" W.



Aerial view

NOTICE: Investment in land carries risk. Prospective buyers should understand and independently verify the risk factors before buying this property. All information furnished by Cyprus Partners about this property has been obtained from sources believed to be reliable. However, neither Cyprus Partners nor the property owner makes any representation or warranty as to completeness or accuracy. This property is subject to prior sale, price change and withdrawal from the market without notice. No representation or warranty is made, express or implied, as to the condition of the property, boundaries, fitness for any particular use, Fair Market Value, access, acres, zoning, or condition of title.