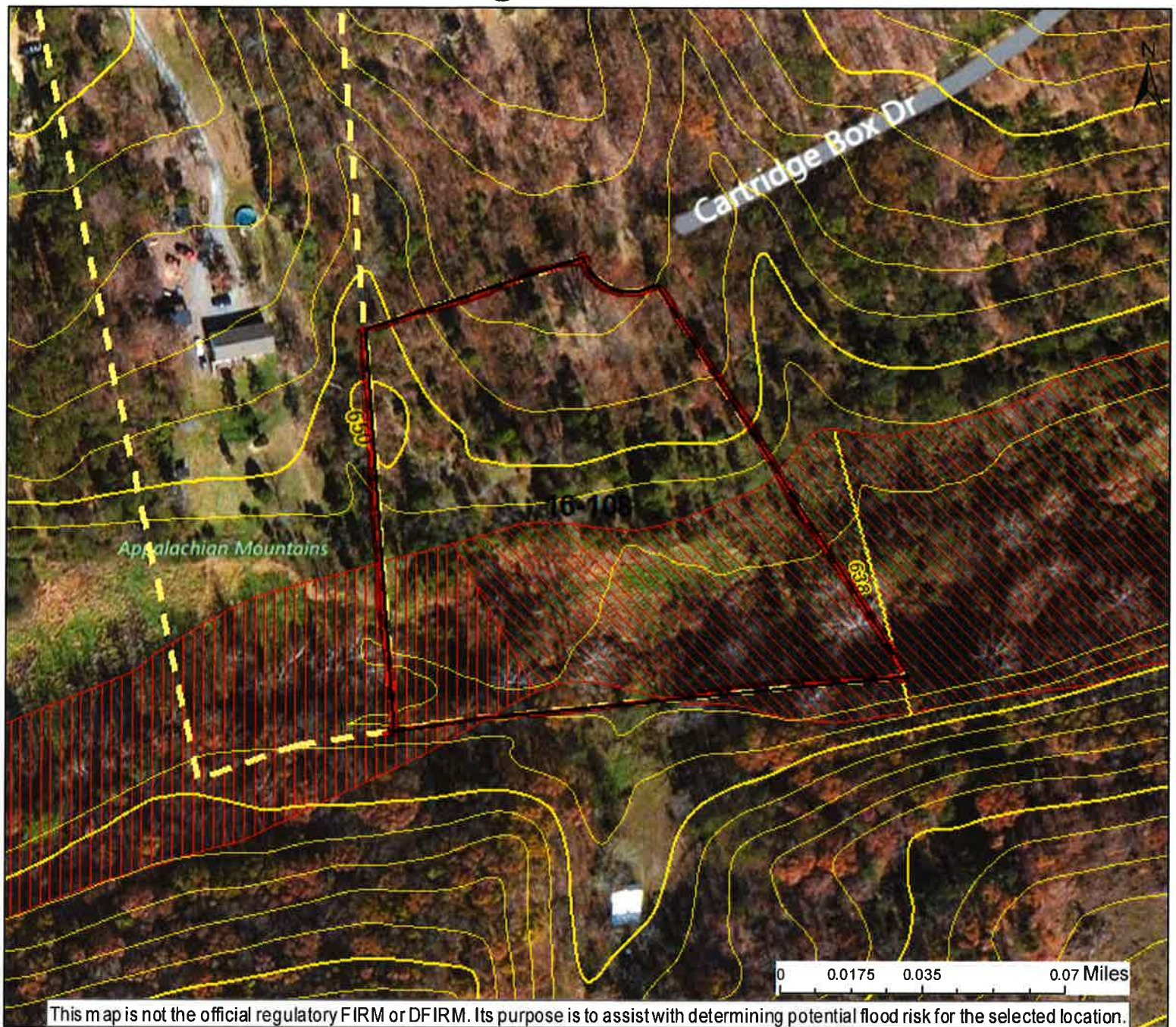


# 7 Long Acre Estates



Location of flood information

## User Notes:

- Cross Section (XS) Lines
- Base Flood Elevation (BFE) Lines
- ▨ Floodway

## Flood Hazard Zone

- ▨ Approximate Study (Zone A)
- ▨ Detailed Study (AE, AH, AO)

## Disclaimer:

The online map is for use in administering the National Flood Insurance Program. It does not necessarily identify all areas subject to flooding, particularly from local drainage sources of small size. To obtain more detailed information in areas where Base Flood Elevations have been determined, users are encouraged to consult the latest Flood Profile data contained in the official flood insurance study. These studies are available online at [www.msc.fema.gov](http://www.msc.fema.gov). WV Flood Tool (<http://www.MapWV.gov/flood>) is supported by FEMA, WV NFIP Office, and WV GIS Technical Center.

Map created on May 21, 2015

## Flood Hazard Area:

Flood Hazard Area:

## Flood Hazard Zone:

### Stream:

### FEMA Issued Flood Map:

### Watershed (HUC8):

### Advisory Flood Height:

### Water Depth:

### Elevation:

### Location (long, lat):

### Location (UTM 17N):

### Contacts:

### CRS Information:

### Flood Profile:

### HEC-RAS Model:

### Parcel Number:



