

Mobile: 601.916.0663
jbales@4cornerprop.com
www.mslandpro.com



Call Jared TODAY!
Office: 601.952.2828
Fax: 601.952.2829

92+/- Acres in Pearl River County

PRICED TO SELL!!

\$295,000.00



LOOKING FOR PRIME HUNTING WITH A CAMP IN SOUTH MISSISSIPPI?

- This **92 ACRES** consist of rolling hills, flat land, a small creek with a variety of hardwoods (that provides an abundant food source for wild game), 7-year-old pines that provides future timber value, as well as thick bedding areas for deer and wild game.
- Shooting house/deer stands along with food plots are already laid out and waiting on you
- The property features great private road frontage making it a prime secluded hunting spot.
- **POWER, WATER & SEPTIC, CAMPSITE, SHED, OLD BARN, 2 CAMPER TRAILERS, AND INTERNAL ROAD SYSTEM!**



Jared Bales
Land Specialist
4 Corner Properties-LLC
855 S. Pear Orchard Rd.
Ste. 401

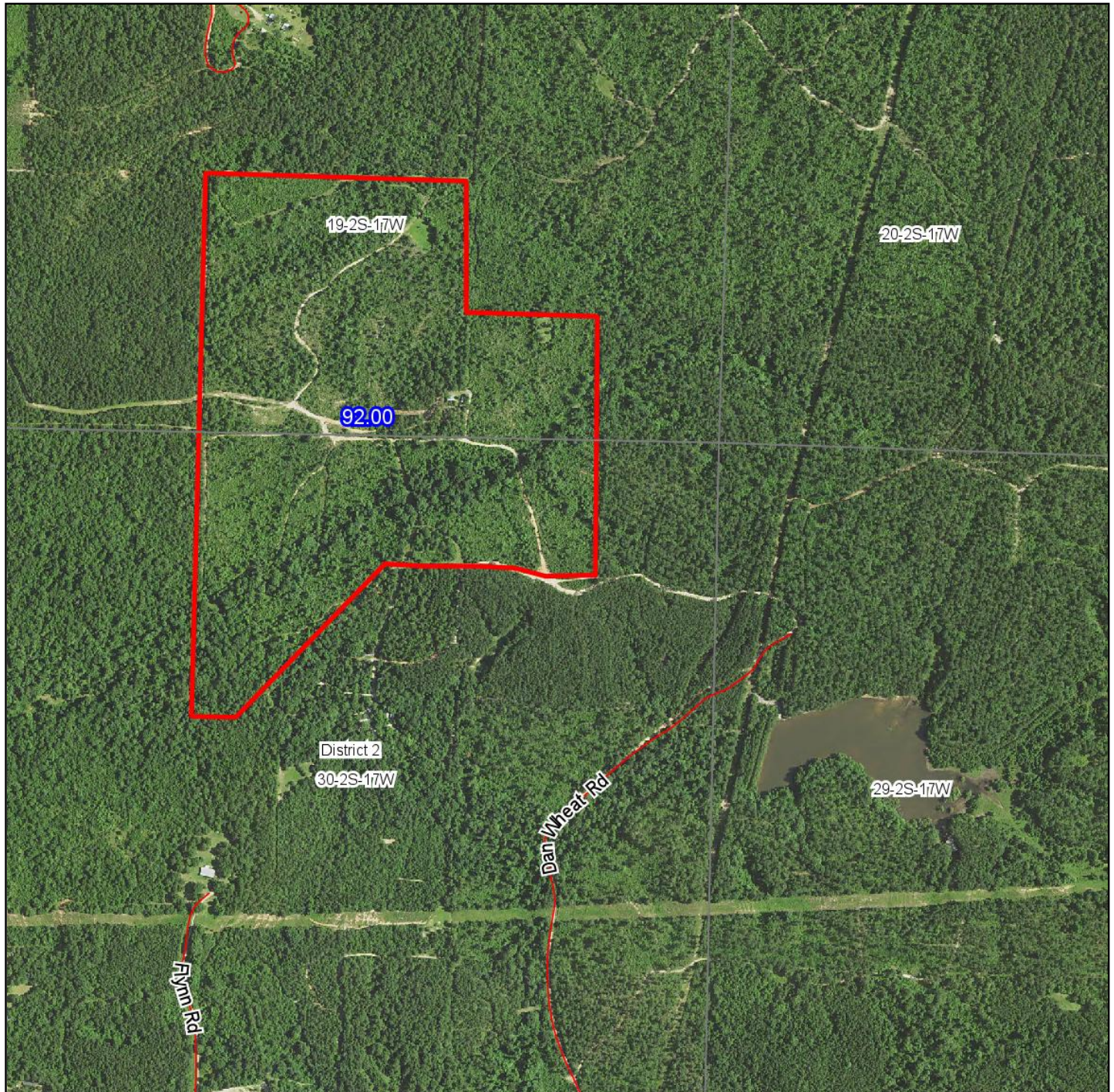




Jared Bales, Land Specialist
4 Corner Properties-LLC
855 S. Pear Orchard Rd. Ste. 401
Ridgeland, MS 39157



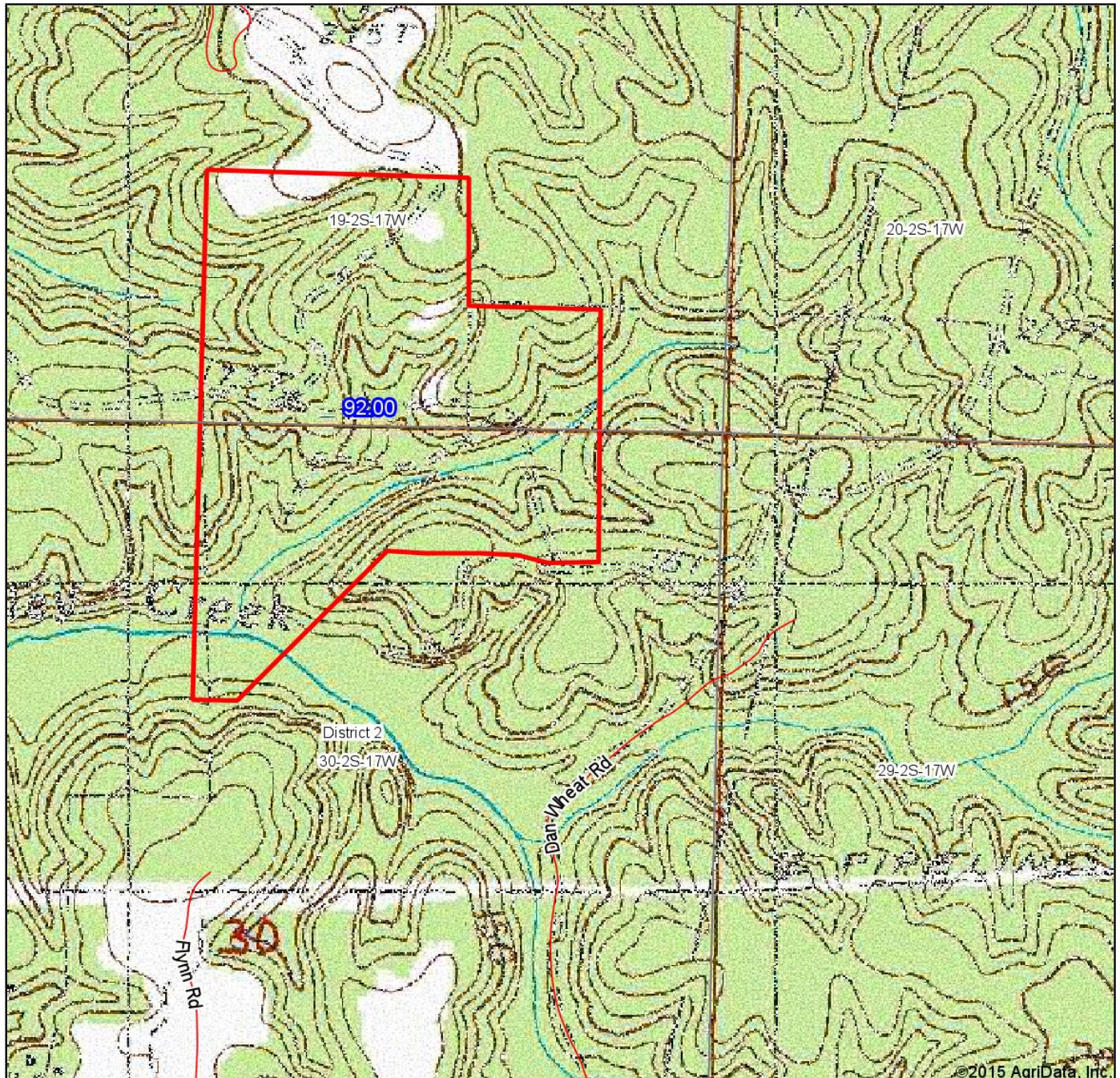
Aerial Map



Jared Bales, Land Specialist
4 Corner Properties-LLC
855 S. Pear Orchard Rd. Ste. 401
Ridgeland, MS 39157



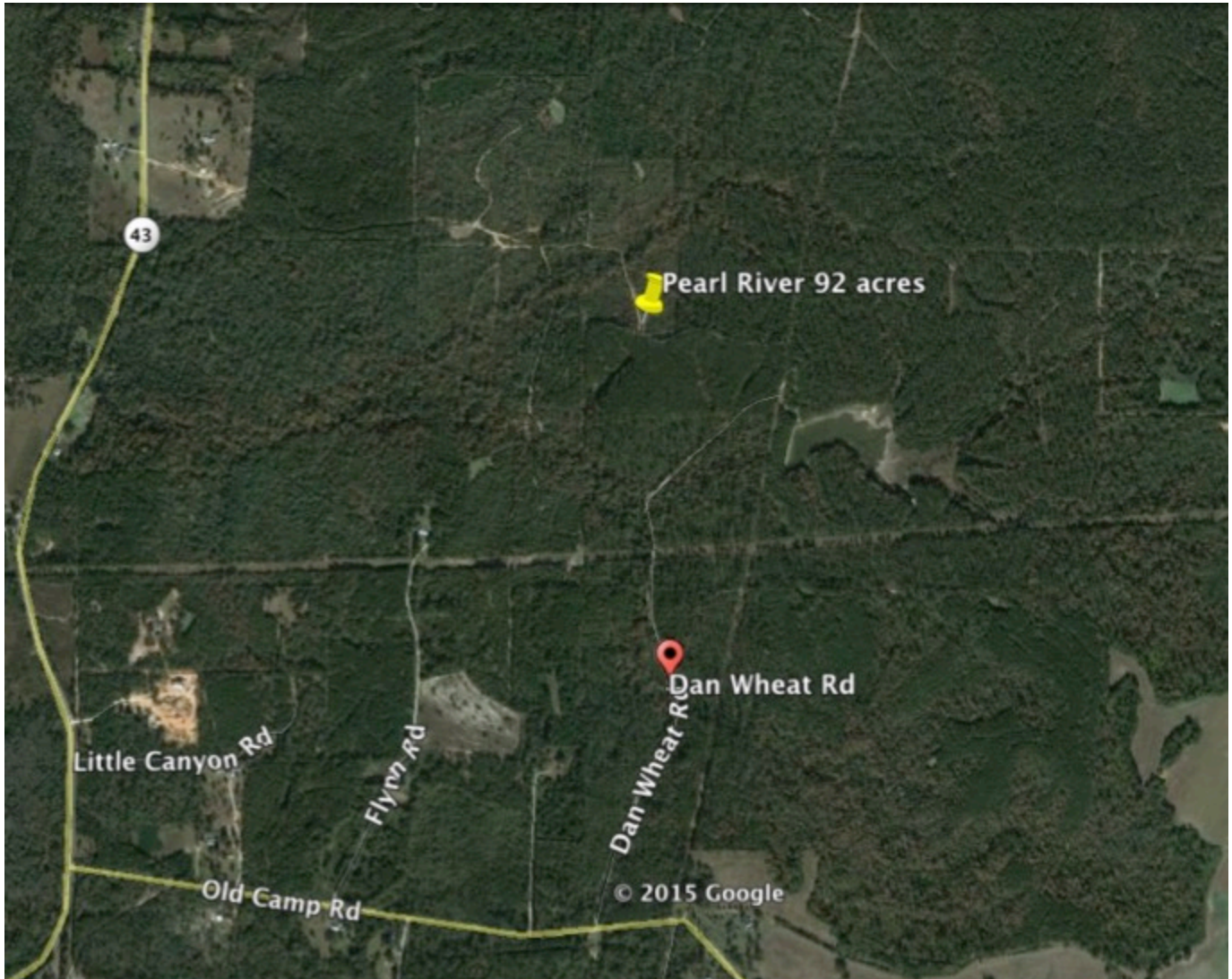
Topography Map



Jared Bales, Land Specialist
4 Corner Properties-LLC
855 S. Pear Orchard Rd. Ste. 401
Ridgeland, MS 39157



Directional Map



Directions

From Picayune, MS take HWY 43N for 25.1 miles, then turn right onto Old Camp Rd (Poplarville, MS), in 0.8 miles turn left onto Dan Wheat Rd. Property is located 0.2 miles behind the private gate.



Jared Bales, Land Specialist
4 Corner Properties-LLC
855 S. Pear Orchard Rd. Ste. 401
Ridgeland, MS 39157

