

Mobile: 601.503.5392
kcarruth@4cornerprop.com
www.4cornerprop.com

 **4 CORNER**
PROPERTIES • LLC
601.952.2828 • www.4cornerprop.com

Call Keith Today!
Office: 601.952.2828
Fax: 601.952.2829

60 +/- Acres in Claiborne County

Excellent Hunting Tract joining High Fence Property



- **Excellent Recreational Tract**
- **Loaded with Deer and Turkey**
- **Road Frontage**
- **Accessible to Utilities**
- **Backs up High Fence Property**
- **Live Creek**

This is the ideal tract in SW Mississippi that offers excellent deer and turkey hunting. This tract features a mixture of hardwoods and pine making it an excellent future timber investment. This property also has road frontage with utilities accessible to build a weekend getaway. Come and check out this outstanding tract today! Call for your private showing TODAY!!!!



Keith Carruth
Land Specialist
4 Corner Properties, LLC
855 S. Pear Orchard Rd. Ste. 401
Ridgeland, MS 39157





Keith Carruth
4 Corner Properties, LLC
855 S. Pear Orchard Rd. Ste. 401
Ridgeland, MS 39157
www.4cornerprop.com



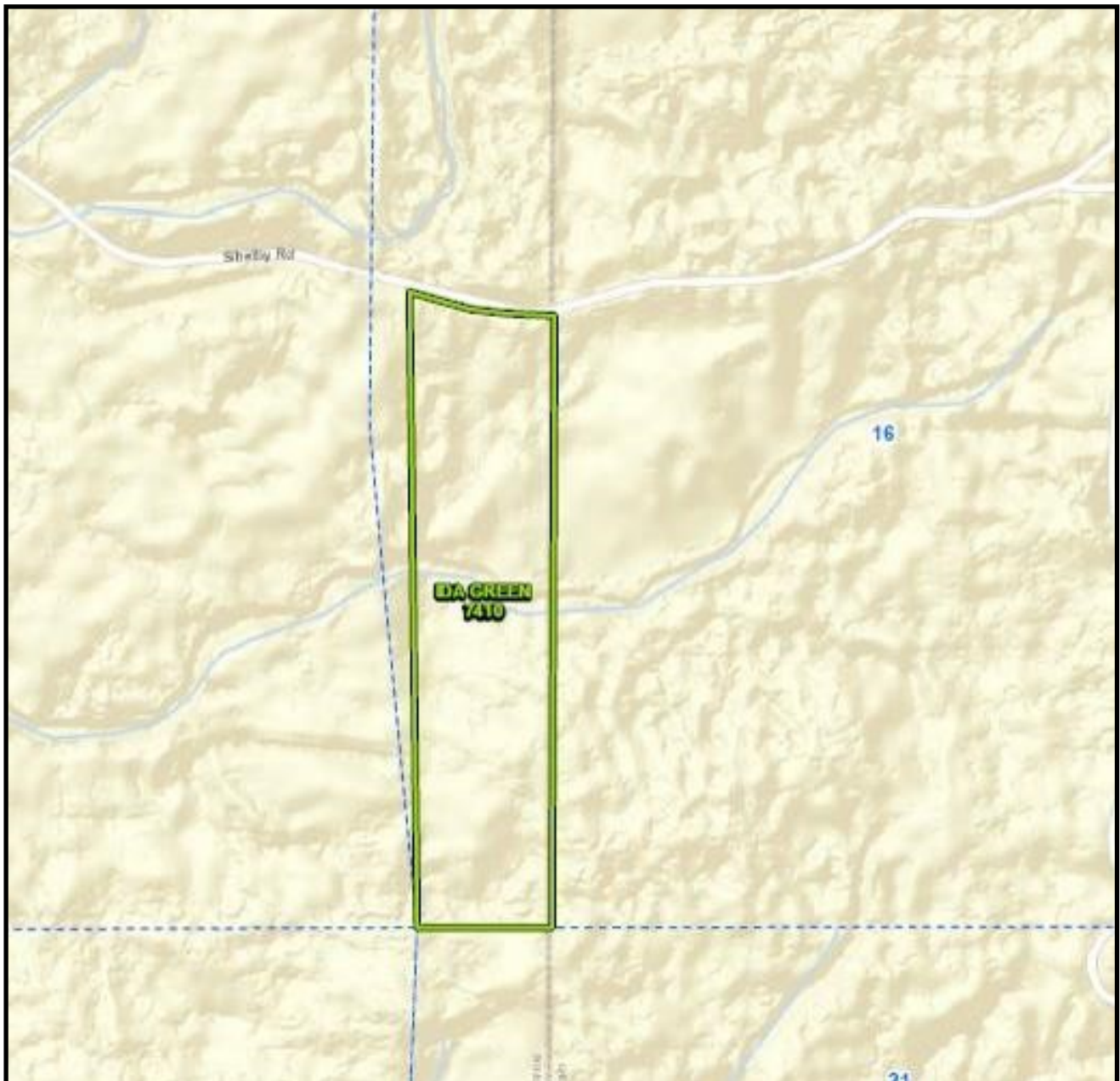


Aerial Map



Keith Carruth
4 Corner Properties, LLC
855 S. Pear Orchard Rd. Ste. 401
Ridgeland, MS 39157
www.4cornerprop.com





Directional Map



Keith Carruth
4 Corner Properties, LLC
855 S. Pear Orchard Rd. Ste. 401
Ridgeland, MS 39157
www.4cornerprop.com

