

Mobile: 601.916.0663  
[jbales@4cornerprop.com](mailto:jbales@4cornerprop.com)  
[www.mslandpro.com](http://www.mslandpro.com)



Call Jared TODAY!  
Office: 601.952.2828  
Fax: 601.952.2829

## 50+/- Acres in Pearl River County

**PRICED TO SELL!!**

**\$145,000.00**



### LOOKING FOR THE BEST HUNTING TRACK IN SOUTH MISSISSIPPI?

- This **50 ACRES** consist of rolling hills, flat land, a small creek with a variety of hardwoods (that provides an abundant food source for wild game), thick bedding areas for deer along with mature pines, and a cleared out campsite that has power and water already available.
- The property features great private road frontage making it a prime secluded hunting spot.
- Provides easy access to all parts of the property due to much man made atv/truck trails.
- **WATER, BEDDING AREA, NATURAL FOOD SOURCE, AND 6 FOOD PLOTS! THIS PROPERTY HAS ALL THE KEY FACTORS TO CONSISTENTLY HARVEST WILD GAME!**



Jared Bales  
Land Specialist  
4 Corner Properties-LLC  
855 S. Pear Orchard Rd.  
Ste. 401





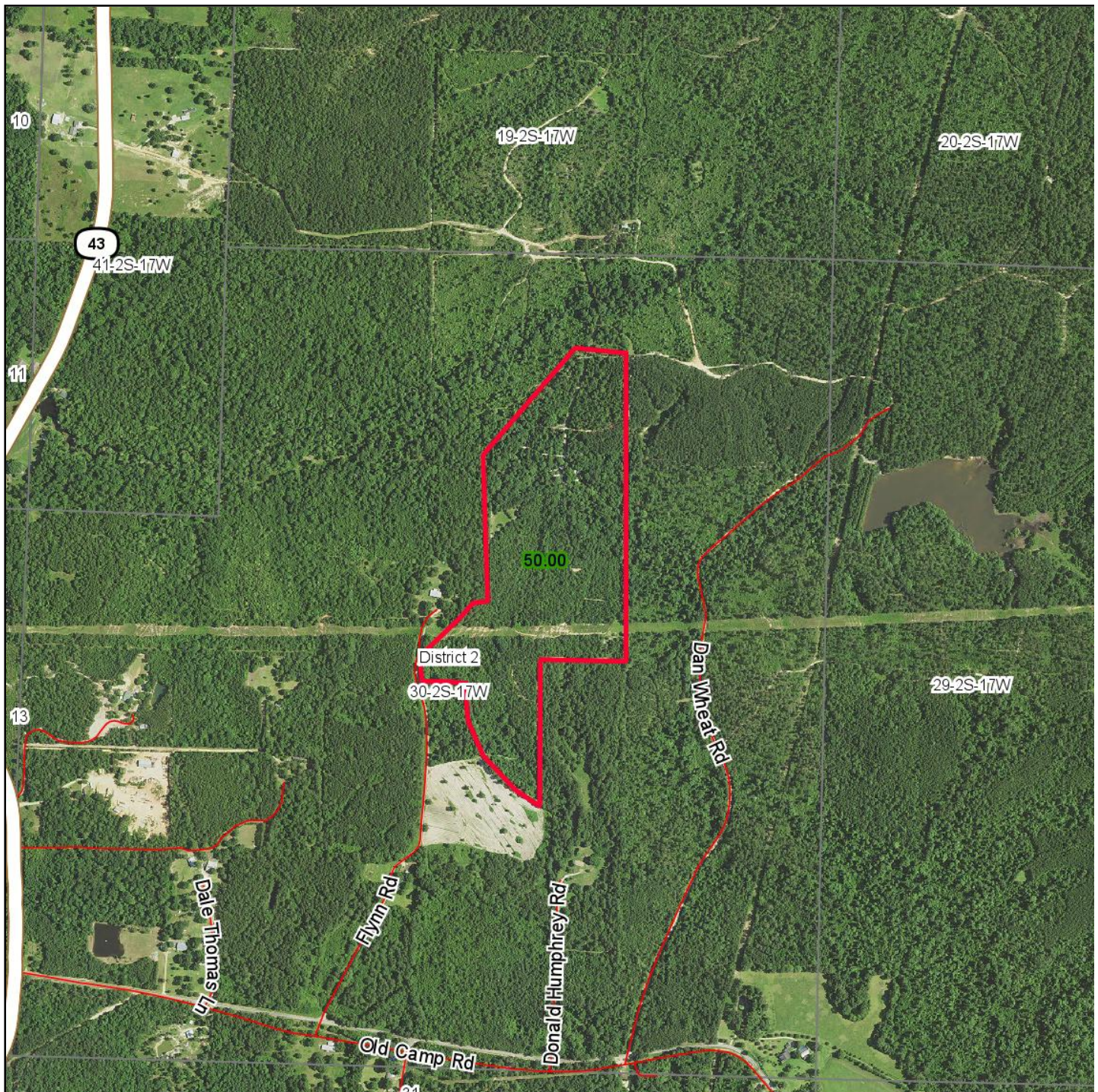
---

**Jared Bales, Land Specialist**  
**4 Corner Properties-LLC**  
**855 S. Pear Orchard Rd. Ste. 401**  
**Ridgeland, MS 39157**





## Aerial Map

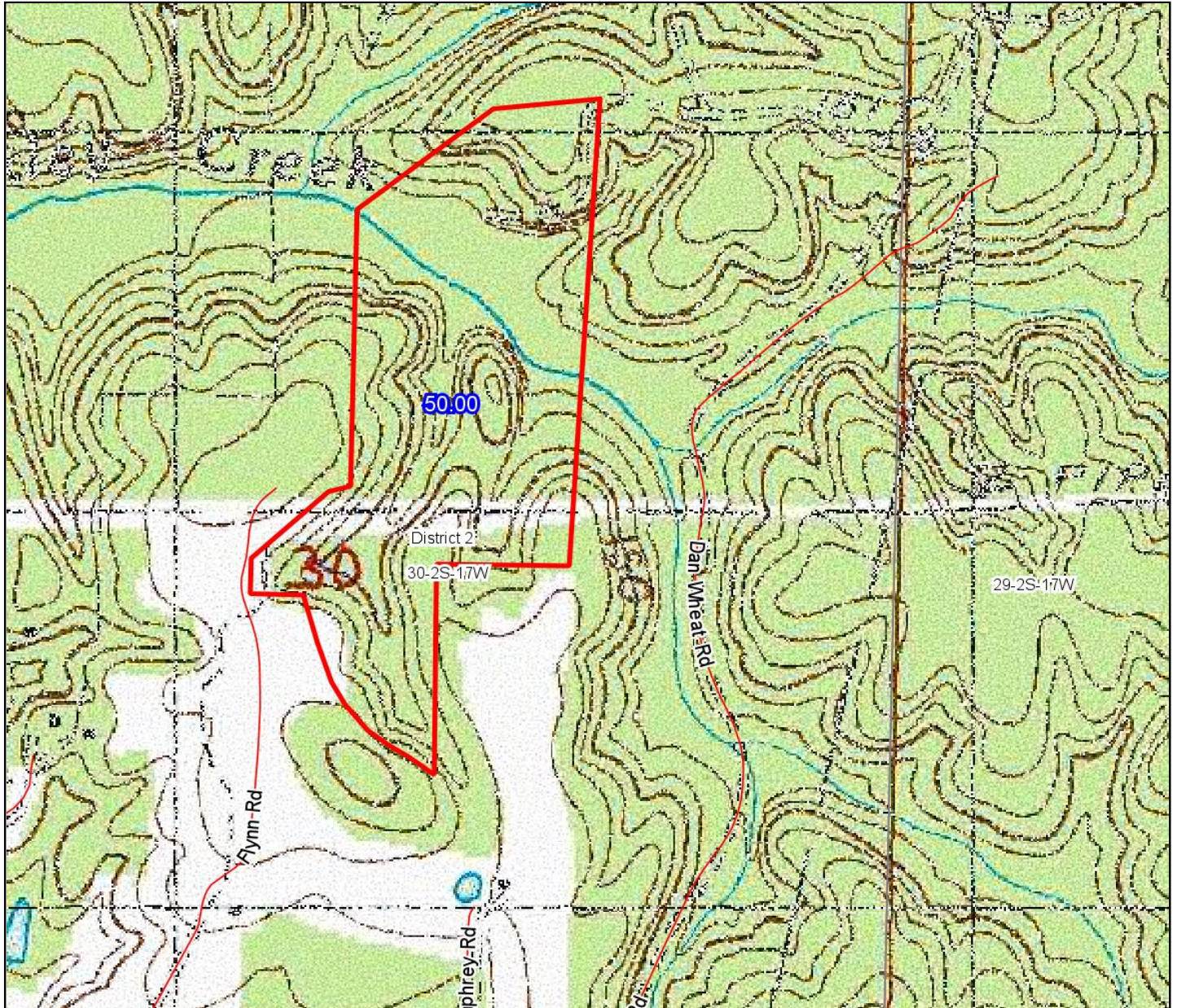


**Jared Bales, Land Specialist**  
**4 Corner Properties-LLC**  
**855 S. Pear Orchard Rd. Ste. 401**  
**Ridgeland, MS 39157**





## Topography Map

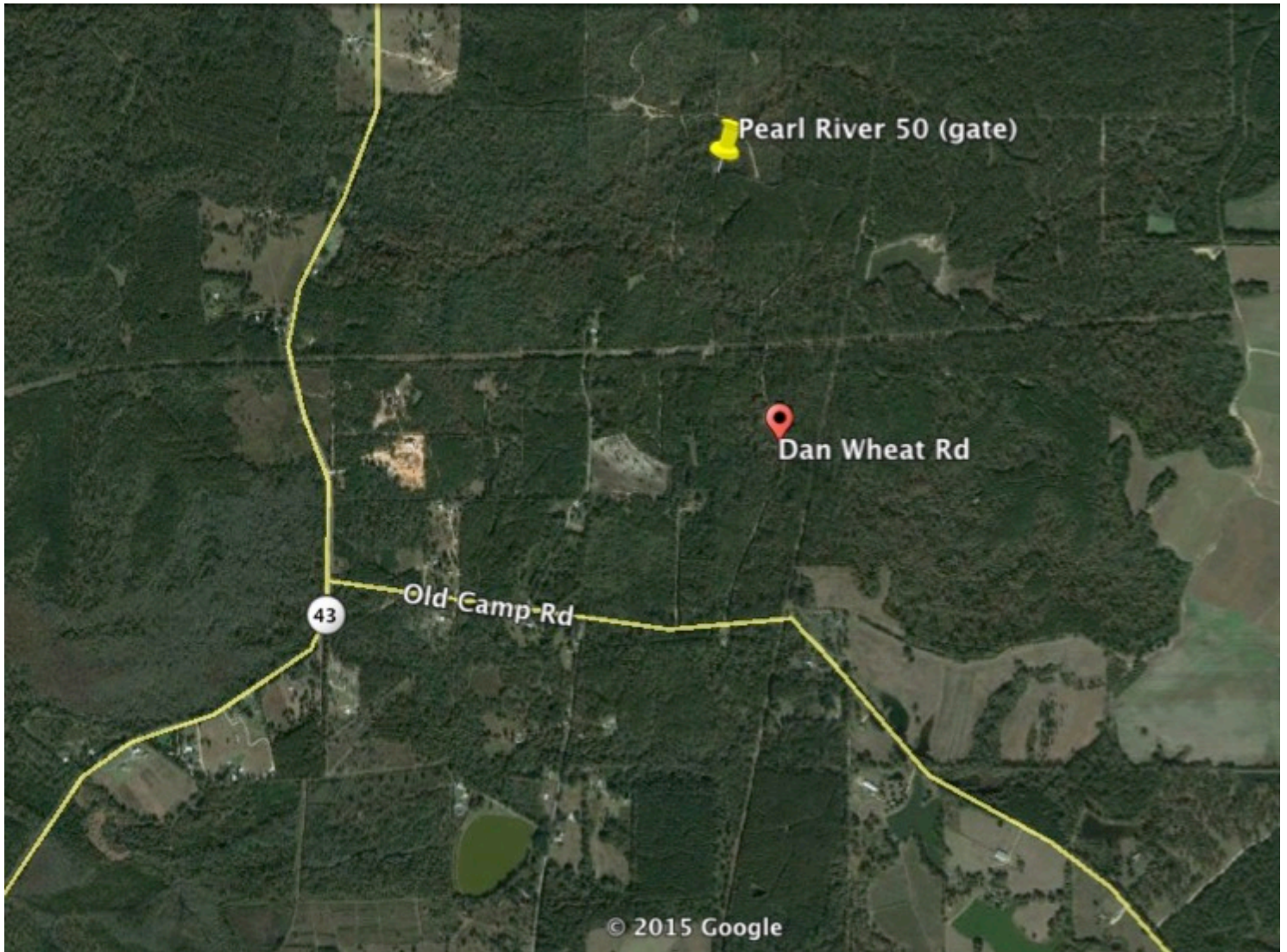


**Jared Bales, Land Specialist**  
**4 Corner Properties-LLC**  
**855 S. Pear Orchard Rd. Ste. 401**  
**Ridgeland, MS 39157**





## Directional Map



## Directions

From Picayune, MS take HWY 43N for 25.1 miles, then turn right onto Old Camp Rd (Poplarville, MS), in 0.8 miles turn left onto Dan Wheat Rd. Property is located 0.4 miles behind the private gate.



**Jared Bales, Land Specialist**  
**4 Corner Properties-LLC**  
**855 S. Pear Orchard Rd. Ste. 401**  
**Ridgeland, MS 39157**

