

FOR SALE

63.39 Acres

Pasture & Hunting Land

Marlin, Falls County, TX 76661

\$209,200

For a virtual tour and investment offering go to: www.texasfarmandranchrealty.com



—“Stewards of Land”—
A DBA of Dube's Commercial, Inc. TREC# 484723

Bob Dube 254-803-5263 (LAND) 512-423-6670 (mobile)

bob@texasfarmandranchrealty.com www.texasfarmandranchrealty.com

**FOR
SALE**

63.39 Acres – Pasture & Hunting Land Marlin, Falls County, TX 76661

Property Highlights

Location – The property is located at 204 CR 236 Marlin, Falls County, Texas. From the intersection of Hwy 6 & Hwy 7 in Marlin take Hwy 7 East 1 mile. Turn right on FM 2958 and go .4 miles. Turn right on CR 236 and right again onto Park St. Property is .6 miles on Left.

Acres – 63.39 acres MOL according to the Falls County Appraisal District and has approximately 1,650 linear feet of road frontage on CR 236.

Improvements – The property has an irrigation well that serves a Pecan Orchard the owner started about 4 years ago. The property has a nice stock tank, a storage/work shed and corral and is fenced and cross fenced with barbed wire. Fencing is in good shape. CR 236 is asphalt and upon entering the property a gravel road leads to the well, corral and shed. Very nice oak tress for beautiful home sites.

Water – There is a City of Marlin Water meter on the property and as mentioned above an irrigation well. A small creek runs through some of the property.

Electricity – TXU services the area and there is an existing meter to the property.

Soil – There are various soil types on the property. Please refer to the USDA Soil Map located in this brochure for soil types.

Minerals – The seller will convey all owned minerals and executory rights. Seller is not exactly sure what percentage of minerals are owned so Buyer will need to perform its due diligence to determine exact ownership.

Topography – The land is flat with gently rolling areas and very nice home sites.

Current Use – Privately owned and is used for grazing cattle and hunting deer.

Ground Cover – Property has numerous legacy oak trees that are very large as well as other native trees to the area. Property has a mixture of Coastal Bermuda, native grasses and wooded areas for wildlife cover. The property also has a Pecan orchid.

Easements – An abstract of title will need to be performed to determine all easements that may exist. Easements known to exist are electrical, water and gas pipeline.

Showings - By appointment only. If applicable, buyers who are represented by an agent/broker must have its agent/broker present at all showings to participate in any co-brokerage commissions.

Price - \$209,200 - \$3,300 an acre



Bob Dube 254-803-5263 (LAND) 512-423-6670 (mobile)

bob@texasfarmandranchrealty.com www.texasfarmandranchrealty.com

**FOR
SALE**

63.39 Acres – Pasture & Hunting Land Marlin, Falls County, TX 76661

Property Pictures



Bob Dube 254-803-5263 (LAND) 512-423-6670 (mobile)

bob@texasfarmandranchrealty.com www.texasfarmandranchrealty.com

**FOR
SALE**

**63.39 Acres – Pasture & Hunting Land
Marlin, Falls County, TX 76661**

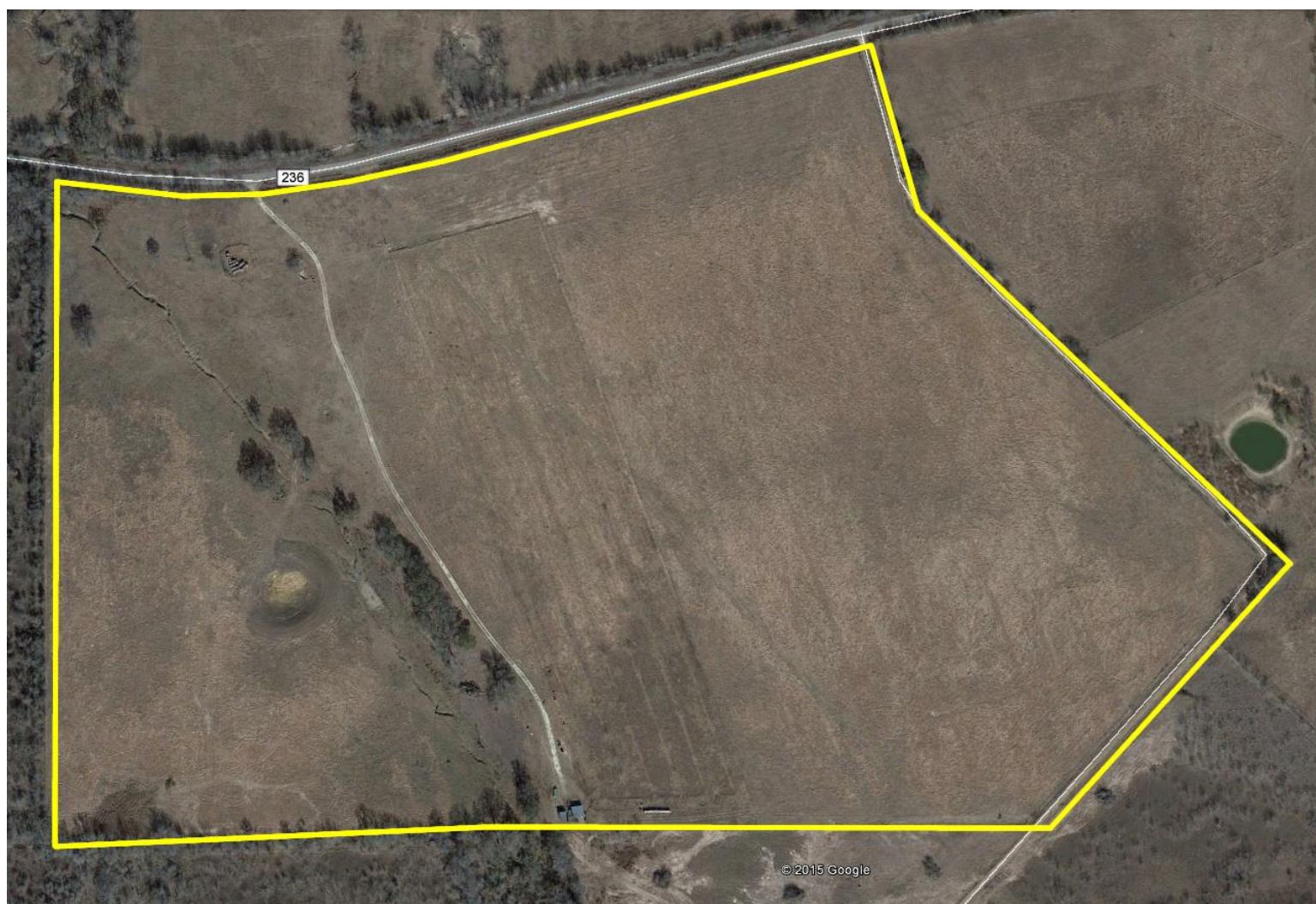
Property Pictures



**FOR
SALE**

63.39 Acres – Pasture & Hunting Land Marlin, Falls County, TX 76661

Property Aerial View



63.39 Acres – Pasture & Hunting Land

Marlin, Falls County, TX 76661

A satellite map of Central Texas. A large red star is placed in the center of the map, with the word "Subject" written in bold black text directly below it. The star is located between the cities of Waco and Temple. Other cities visible on the map include Dallas, Longview, Tyler, Lufkin, Georgetown, College Station, Conroe, Houston, and Baytown. Major highways are shown as yellow lines with their respective shields (e.g., I-35, I-45, I-69, I-820, I-49, I-220, I-10, I-37, I-67, I-77, I-90, I-59, I-610, I-635, I-67, I-84, I-87, I-96, I-100, I-130, I-160, I-170, I-180, I-190, I-200, I-210, I-220, I-230, I-240, I-250, I-260, I-270, I-280, I-290, I-300, I-310, I-320, I-330, I-340, I-350, I-360, I-370, I-380, I-390, I-400, I-410, I-420, I-430, I-440, I-450, I-460, I-470, I-480, I-490, I-500, I-510, I-520, I-530, I-540, I-550, I-560, I-570, I-580, I-590, I-600, I-610, I-620, I-630, I-640, I-650, I-660, I-670, I-680, I-690, I-700, I-710, I-720, I-730, I-740, I-750, I-760, I-770, I-780, I-790, I-800, I-810, I-820, I-830, I-840, I-850, I-860, I-870, I-880, I-890, I-900, I-910, I-920, I-930, I-940, I-950, I-960, I-970, I-980, I-990, I-1000). The map also shows various smaller roads, rivers, and green areas representing vegetation. In the bottom right corner, there is a small copyright notice: "© 2015 Google, © 2015 INEGI, Image Landsat, Data SIO, NOAA, U.S. Navy, NGA, GEBCO".

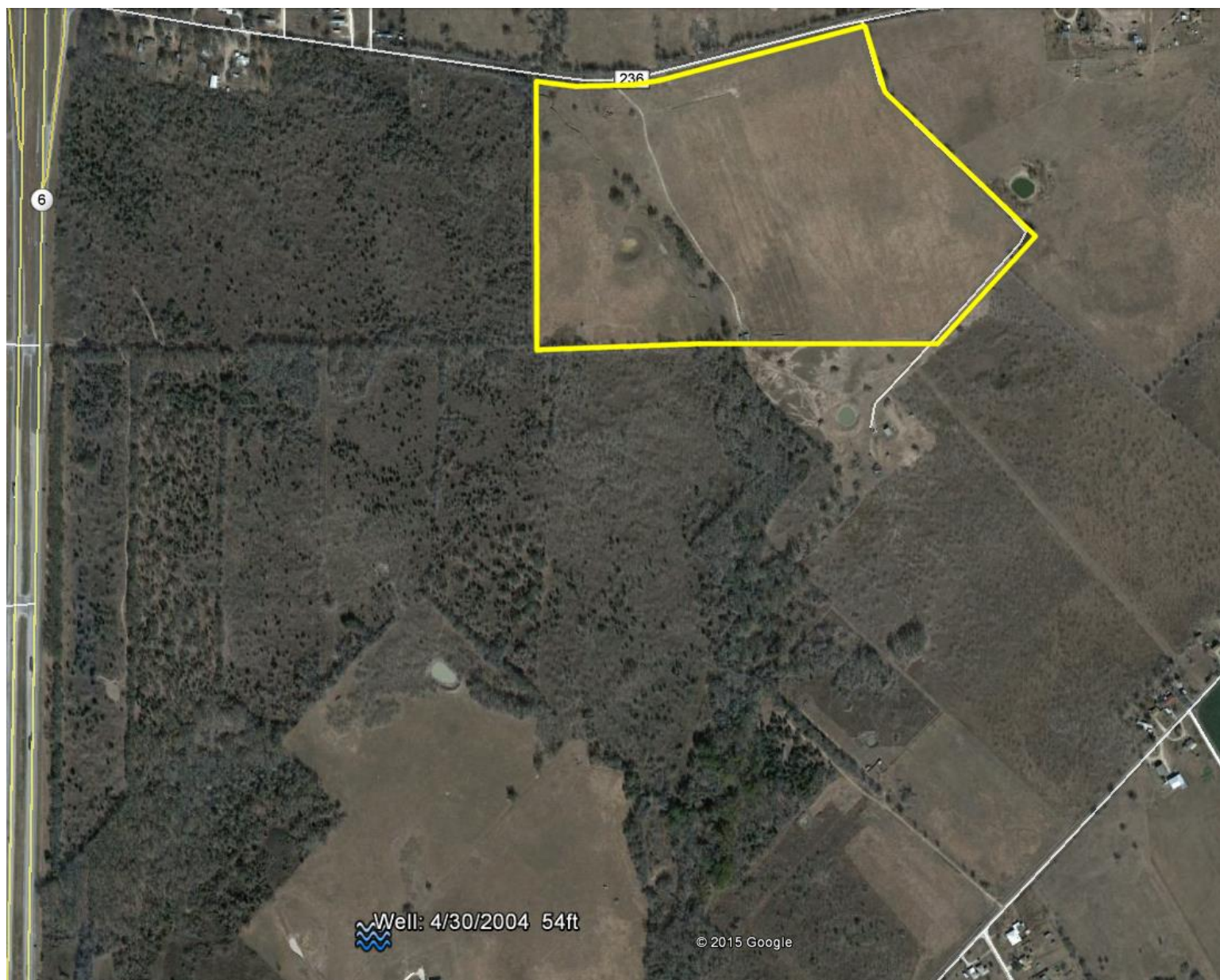


bob@texasfarmandranchrealty.com www.texasfarmandranchrealty.com

**FOR
SALE**

**63.39 Acres – Pasture & Hunting Land
Marlin, Falls County, TX 76661**

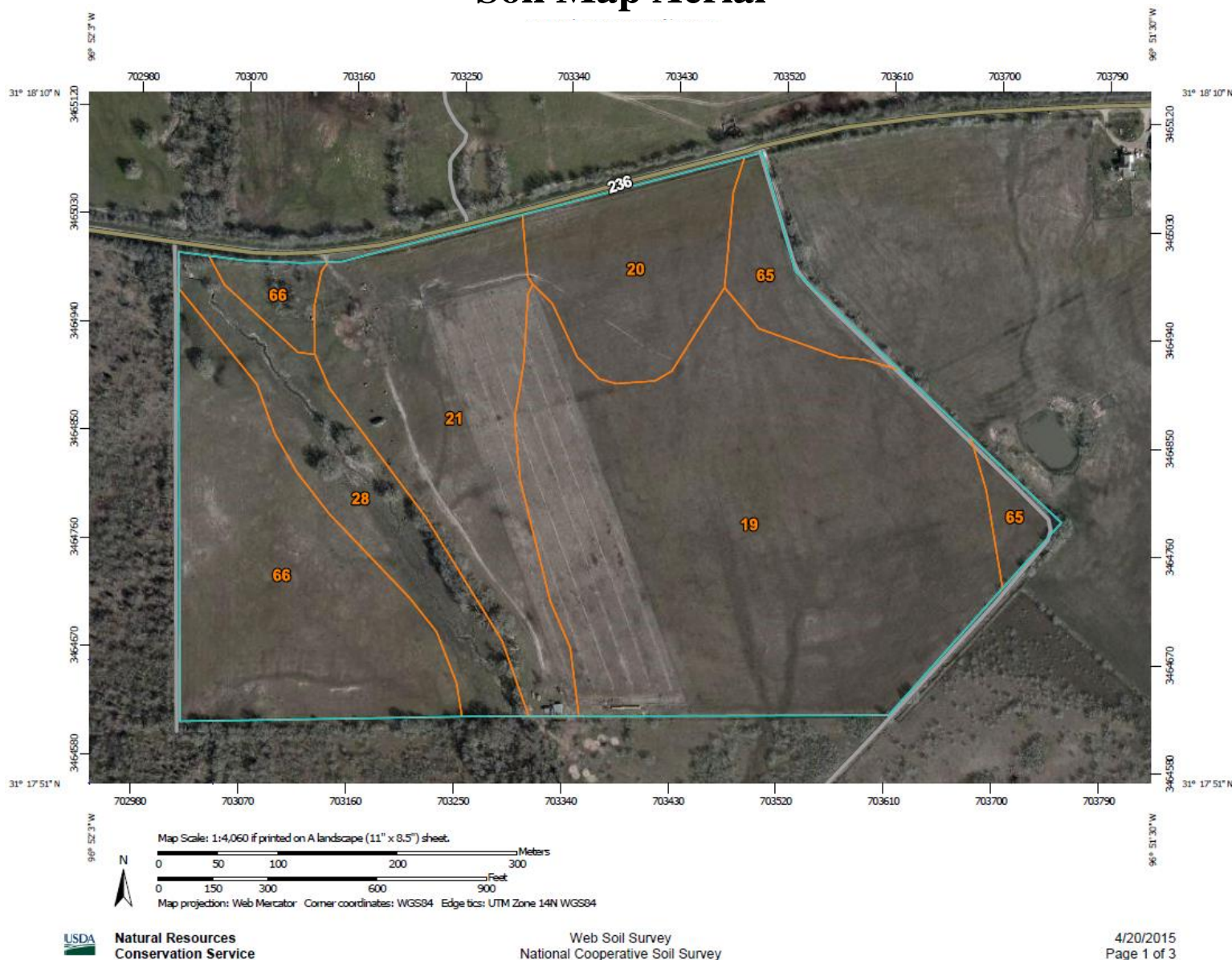
Aerial of Water Well Nearest Property



**FOR
SALE**

63.39 Acres – Pasture & Hunting Land Marlin, Falls County, TX 76661

Soil Map Aerial



**FOR
SALE**

63.39 Acres – Pasture & Hunting Land Marlin, Falls County, TX 76661

Soil Type Legend

Falls County, Texas (TX145)			
Map Unit Symbol	Map Unit Name	Acres in AOI	Percent of AOI
19	Crockett fine sandy loam, 0 to 1 percent slopes	26.7	41.5%
20	Crockett fine sandy loam, 1 to 3 percent slopes	5.6	8.7%
21	Crockett fine sandy loam, 2 to 5 percent slopes, eroded	10.9	17.0%
28	Gowen clay loam, frequently flooded	5.7	8.8%
65	Wilson silty clay loam, 0 to 1 percent slopes	3.1	4.8%
66	Wilson silty clay loam, 1 to 3 percent slopes	12.4	19.2%
Totals for Area of Interest		64.5	100.0%



— "Stewards of Land"
A DBA of Dube's Commercial, Inc. TREC# 484723

Bob Dube 254-803-5263 (LAND) 512-423-6670 (mobile)

bob@texasfarmandranchrealty.com www.texasfarmandranchrealty.com

**FOR
SALE**

63.39 Acres – Pasture & Hunting Land Marlin, Falls County, TX 76661

Soil Type - 19

19—Crockett fine sandy loam, 0 to 1 percent slopes. This deep, moderately well drained, nearly level soil is on broad uplands and narrow ridgetops. Slopes are convex, and areas range from 50 to 200 acres in size.

This soil has a surface layer of brown, medium acid fine sandy loam about 10 inches thick. Between depths of 10 and 15 inches is reddish brown, medium acid clay that has reddish yellow and yellowish brown mottles. Between depths of 15 and 26 inches is brownish yellow, medium acid clay that has yellow and yellowish red mottles. Below this layer, to a depth of 37 inches, is light reddish brown, slightly acid clay that has yellowish red and yellow mottles. Very pale brown, neutral clay that has yellow, brownish yellow, and reddish yellow mottles is between depths of 37 and 56 inches. The underlying layer, to a depth of 80 inches, is light gray, moderately alkaline clay loam.

This soil is difficult to work; when dry, it forms extremely hard surface crusts. A dense plowpan forms in cultivated areas. Permeability is very slow, and available water capacity is high. The root zone is deep, but root penetration is slow and difficult in the underlying layers. Runoff is slow. The hazard of water erosion is slight.

Included with this soil in mapping are a few intermingled areas of Normangee and Wilson soils. The included soils make up 10 to 20 percent of this map unit.

This soil has medium potential for crops. The major crops are small grain for winter grazing and grain sorghum. The major objectives in management of this soil are improving soil tilth, maintaining fertility, and controlling erosion. Proper management includes growing high-residue crops and deep-rooted legumes.

This soil has high potential for pasture. It is well suited to coastal bermudagrass, common bermudagrass, and weeping lovegrass. Good pasture management includes fertilization, weed control, and controlled grazing.

This soil has high potential for range. The climax plant community is a mixture of tall and mid grasses and an overstory of a few live oak, elm, and hackberry trees along streams and occasionally in motts.

This soil has low potential for most urban uses. Its most restrictive limitations are shrinking and swelling with changes in moisture, corrosivity to uncoated steel, low strength, and slow percolation. The potential for recreation is medium. The very slow permeability is the most restrictive limitation for this use. Potential for openland and rangeland wildlife habitat is medium. Capability subclass IIIs; Claypan Prairie range site.



Bob Dube 254-803-5263 (LAND) 512-423-6670 (mobile)

bob@texasfarmandranchrealty.com www.texasfarmandranchrealty.com

—'Stewards of Land'—
A DBA of Dube's Commercial, Inc. TREC# 484723

**FOR
SALE**

63.39 Acres – Pasture & Hunting Land Marlin, Falls County, TX 76661

Soil Type - 20

20—Crockett fine sandy loam, 1 to 3 percent slopes. This deep, moderately well drained, gently sloping soil is on uplands. Slopes are convex. Areas range from 35 to 400 acres in size.

This soil has a surface layer of brown, medium acid fine sandy loam about 9 inches thick. Between depths of 9 and 17 inches is mottled brownish yellow and red, medium acid clay that has grayish brown mottles. Below this layer, to a depth of 29 inches, is mottled yellow and grayish brown, medium acid clay, that has reddish yellow mottles. Between depths of 29 and 42 inches is brown, slightly acid clay that has brownish yellow mottles; and between depths of 42 and 53 inches is brownish yellow, neutral clay that has light brownish gray and reddish yellow mottles. Between depths of 53 and 73 inches is yellow, moderately alkaline sandy clay loam that has light brownish gray, white, and yellowish brown mottles. The underlying layer, to a depth of 80 inches, is mottled yellow light gray, and brownish yellow, moderately alkaline sandy clay loam.

Hard surface crusts and dense plowpans that form in cultivated areas make this soil difficult to work. Permeability is very slow, and available water capacity is high. The root zone is deep, but root penetration is slow and difficult in the underlying layers. Runoff is medium. The hazard of water erosion is moderate.

Included with this soil in mapping are a few intermingled areas of Normangee and Wilson soils and eroded Crockett soils. The included soils make up about 10 to 20 percent of this map unit.

This soil has medium potential for production of crops, but it is limited by low natural fertility and rapid loss of soil moisture during the summer. The major crops are small grain for winter grazing and grain sorghum. The major objectives in management are controlling erosion, maintaining fertility, and improving tilth. Terracing and growing high-residue crops and deep-rooted legumes help control erosion and maintain tilth.

This soil has high potential for pasture. It is well suited to coastal bermudagrass, common bermudagrass, and weeping lovegrass. Proper pasture management includes fertilization, weed control, and controlled grazing.

This soil has high potential for range. The climax plant community is a mixture of tall and mid grasses and an overstory of a few live oak, elm, and hackberry trees along streams and in occasional motts.

This soil has low potential for most urban uses. Its most restrictive limitations are shrinking and swelling with changes in moisture, corrosivity to uncoated steel, and slow percolation. The potential for recreation is medium. The very slow permeability is the most restrictive limitation for this use. Potential for openland and range-land wildlife habitat is medium. Capability subclass IIIe; Claypan Prairie range site.



Bob Dube 254-803-5263 (LAND) 512-423-6670 (mobile)

bob@texasfarmandranchrealty.com www.texasfarmandranchrealty.com

**FOR
SALE**

63.39 Acres – Pasture & Hunting Land Marlin, Falls County, TX 76661

Soil Type - 21

21—Crockett fine sandy loam, 2 to 5 percent slopes, eroded. This deep, moderately well drained, gently sloping soil is on uplands. Soil areas are long, narrow bands that slope to natural drainageways. They range from 10 to 150 acres in size. Slopes are convex. Water erosion has removed part of the original surface layer. Many areas are dissected by gullies about 1 to 2 feet deep and 75 to 100 feet apart.

This soil has a surface layer of yellowish brown, medium acid fine sandy loam about 4 inches thick. Between depths of 4 and 12 inches is reddish brown, slightly acid clay that has reddish yellow and yellowish red mottles; and between depths of 12 and 29 inches is medium acid clay that is brown in the upper part and yellowish brown in the lower part. Mottles are brown and yellowish red. Between depths of 29 and 46 inches is brownish yellow, neutral sandy clay that has pinkish gray and light brownish gray mottles. The underlying layer, to a depth of 80 inches, is mottled brownish yellow and very pale brown, mildly alkaline sandy clay loam.

This soil is difficult to work. When dry, the surface becomes extremely hard. Permeability is very slow, and available water capacity is high. The root zone is deep, but root penetration is slow and difficult in the underlying layers. Runoff is medium. The hazard of water erosion is moderately severe.

Included with this soil in mapping are a few intermingled areas of Normangee and Wilson soils. The included

This soil has low potential for production of crops. The major crops are grain sorghum, cotton, and hay. The objectives in management are improving tilth, maintaining fertility, and controlling erosion. Terracing, growing crops that produce large amounts of residue, and growing deep-rooted legumes help to control erosion and maintain tilth.

This soil has medium potential for pasture. It is well suited to coastal bermudagrass, common bermudagrass, and weeping lovegrass. Proper pasture management includes fertilization, weed control, and controlled grazing.

This soil has high potential for range. The climax plant community is a mixture of tall and mid grasses and an overstory of a few live oak, elm, and hackberry trees along the streams and occasionally in motts.

This soil has low potential for most urban uses. Its most restrictive limitations are shrinking and swelling with changes in moisture, corrosivity to uncoated steel, and slow percolation. The potential for recreation is medium. The very slow permeability and slope are the most restrictive limitations for this use. Potential for both openland and rangeland wildlife habitats is medium. Capability subclass IVE; Claypan Prairie range site.



—“Stewards of Land”—
A DBA of Dube’s Commercial, Inc. TREC# 484723

Bob Dube 254-803-5263 (LAND) 512-423-6670 (mobile)

bob@texasfarmandranchrealty.com www.texasfarmandranchrealty.com

**FOR
SALE**

63.39 Acres – Pasture & Hunting Land Marlin, Falls County, TX 76661

Soil Type - 28

28—Gowen clay loam, frequently flooded. This deep, well drained, nearly level soil is on flood plains along major streams. It is flooded two or three times each year; flooding lasts from several hours to several days. Areas have plane slopes of 0 to 1 percent. These areas are on flood plains in long, narrow bands and are dissected by old creek beds and by meandering channels. Individual areas range from 20 to about 200 acres in size.

The soil has a surface layer of very dark grayish brown, neutral clay loam about 23 inches thick. Below the surface layer, to a depth of 36 inches, is brown, neutral clay loam. The underlying layer, to a depth of 80 inches, is dark grayish brown, neutral clay loam stratified with fine sandy loam and clay in the lower part.

Permeability is moderate, and the available water capacity is high. The root zone is deep and easily penetrated by roots. Runoff is slow. The hazard of water erosion is slight.

Included with this soil in mapping are a few intermingled areas of Bunyan and Trinity soils and areas of Gowen soils that are not flooded each year. The included soils make up about 15 percent of this map unit.

This soil has low potential for production of crops, recreation, and urban uses. The most restrictive limitation is flooding, which can only be overcome by major flood control.

This soil is well suited to pasture and has high potential for this use. It is well suited to improved bermudagrass, johnsongrass, common bermudagrass, and kleingrass. Proper management includes fertilization, controlled grazing, and weed control.

This soil has high potential for range. The climax plant community is a mixture of tall and mid grasses and an overstory of scattered oak, pecan, hackberry, elm, and cottonwood trees.

This soil has low potential for openland wildlife habitat and medium potential for rangeland wildlife habitat. Capability subclass Vw; Loamy Bottomland range site.



—'Stewards of Land'
A DBA of Dube's Commercial, Inc. TREC# 484723

Bob Dube 254-803-5263 (LAND) 512-423-6670 (mobile)

bob@texasfarmandranchrealty.com www.texasfarmandranchrealty.com

**FOR
SALE**

63.39 Acres – Pasture & Hunting Land Marlin, Falls County, TX 76661

Soil Type - 65

65—Wilson silty clay loam, 0 to 1 percent slopes. This deep, somewhat poorly drained, nearly level soil is on uplands and ancient stream terraces. Slopes are plane. Areas range from 20 to 200 acres in size.

This soil has a surface layer of dark gray, mildly alkaline silty clay loam about 6 inches thick. Below the surface layer, to a depth of 25 inches, is dark gray, mildly alkaline clay. Between depths of 25 and 39 inches is gray, mildly alkaline clay. Below this layer, to a depth of 58 inches, is light gray, moderately alkaline clay that has light yellowish brown mottles. The underlying layer, to a depth of 80 inches, is light olive gray, moderately alkaline clay that has yellowish brown mottles (fig. 10).

This soil is difficult to work because of surface crusts and dense plowpan layers that form in cultivated areas. When dry, this soil is extremely hard; when wet, it is sticky and plastic. Permeability is very slow, and available water capacity is high. The root zone is deep, but root penetration is slow and difficult in the underlying layers. Runoff is slow. The hazard of water erosion is slight.

Included with this soil in mapping are a few intermingled areas of Burleson, Crockett, and Normangee soils. The included soils make up about 10 to 20 percent of this map unit.

This soil has medium potential for production of crops. The major crops are grain sorghum, cotton, hay, and some small grain for winter grazing. The objectives of management are improving tilth and maintaining fertility. Growing crops that produce large amounts of residue and legumes helps maintain tilth.

This soil has medium potential for pasture. It is well suited to coastal bermudagrass, King Ranch bluestem, and weeping lovegrass. Pasture management needed includes fertilization, weed control, and controlled grazing.

This soil has medium potential for range. The climax plant community is a mixture of tall and mid grasses and an overstory of a few live oak, elm, and hackberry trees along streams and in occasional motts.

This soil has low potential for most urban uses. Its most restrictive limitation is shrinking and swelling with changes in moisture, occasional wetness, low strength, corrosivity to uncoated steel, and slow percolation. The potential for recreation is medium. Wetness and the very slow permeability are the most restrictive limitations for this use. Potential for both openland and rangeland wildlife habitat is medium. Capability subclass IIIw; Claypan Prairie range site.



Bob Dube 254-803-5263 (LAND) 512-423-6670 (mobile)

bob@texasfarmandranchrealty.com www.texasfarmandranchrealty.com

—'Stewards of Land'—
A DBA of Dube's Commercial, Inc. TREC# 484723

**FOR
SALE**

63.39 Acres – Pasture & Hunting Land Marlin, Falls County, TX 76661

Soil Type - 66

66—Wilson silty clay loam, 1 to 3 percent slopes. This deep, somewhat poorly drained, gently sloping soil is on uplands and ancient stream terraces. Slopes are plane or slightly concave. Areas range from 15 to 150 acres in size.

The soil has a surface layer of very dark gray, mildly alkaline silty clay loam about 6 inches thick. Below the surface, to a depth of 28 inches, is dark gray, mildly alkaline clay. Between depths of 28 and 55 inches is gray, mildly alkaline clay. The underlying layer, to a depth of 80 inches, is light brownish gray, moderately alkaline clay that has brownish yellow mottles.

This soil is difficult to work because of surface crusts and dense plowpan layers that form in cultivated areas. When dry, this soil is extremely hard; when wet, it is sticky and gummy. Permeability is very slow, and available water capacity is high. The root zone is deep, but root penetration is slow and difficult in the underlying layers. Runoff is medium. The hazard of water erosion is moderate.

Included with this soil in mapping are a few intermingled areas of Burleson, Crockett, and Normangee soils. Also included are a few areas of eroded Wilson soils. The included soils make up about 10 to 20 percent of this map unit.

This soil has medium potential for production of crops, but it is limited for this use by surface crusting and rapid loss of soil moisture during the summer. The major crops are grain sorghum, cotton, and small grain for winter grazing. The major objectives of management are controlling erosion, maintaining fertility, and improving tilth. Growing crops that produce large amounts of residue or growing deep-rooted legumes help to control erosion and maintain tilth.

This soil has medium potential for pasture. It is well suited to coastal bermudagrass, King Ranch bluestem, and weeping lovegrass. Needed pasture management includes fertilization, weed control, and controlled grazing.

This soil has medium potential for range. The climax plant community is a mixture of tall and mid grasses and an overstory of a few live oak, elm, and hackberry trees along streams and occasionally in motts.

This soil has low potential for most urban uses. Its most restrictive limitations are shrinking and swelling with changes in moisture, occasional wetness, low strength, corrosivity to uncoated steel, and slow percolation. The potential for recreation is medium. Occasional wetness and the very slow permeability are the most restrictive limitations for this use. Potential for both openland and rangeland wildlife habitat is medium. Capability subclass IIIe; Claypan Prairie range site.



—“Stewards of Land”
A DBA of Dube’s Commercial, Inc. TREC# 484723

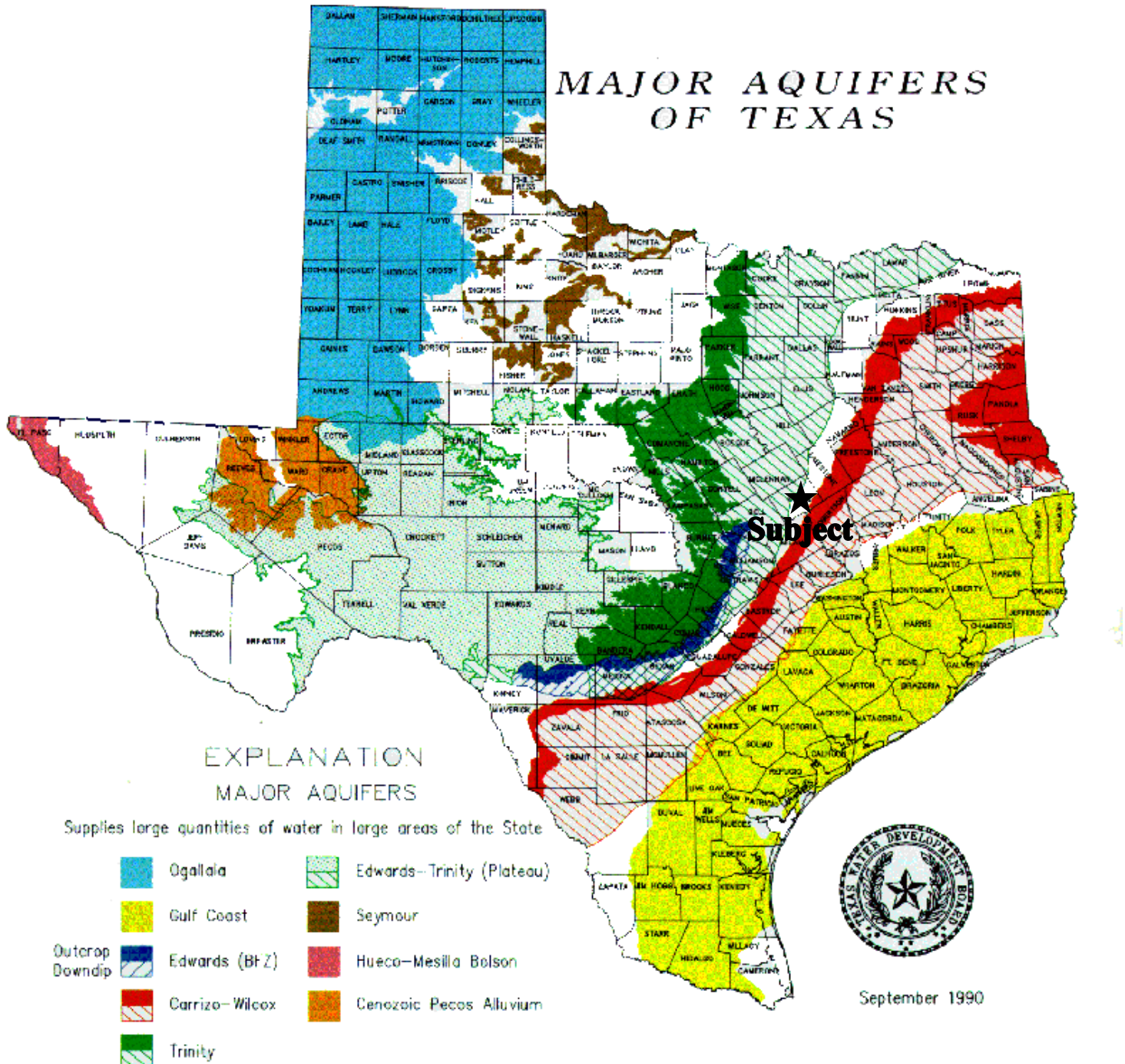
Bob Dube 254-803-5263 (LAND) 512-423-6670 (mobile)

bob@texasfarmandranchrealty.com www.texasfarmandranchrealty.com

**FOR
SALE**

63.39 Acres – Pasture & Hunting Land Marlin, Falls County, TX 76661

Property Location to Major Aquifers of Texas



TEXAS
FARM & RANCH REALTY

—“Stewards of Land”—
A DBA of Dube’s Commercial, Inc. TREC# 484723

Bob Dube 254-803-5263 (LAND) 512-423-6670 (mobile)

bob@texasfarmandranchrealty.com www.texasfarmandranchrealty.com

**FOR
SALE**

63.39 Acres – Pasture & Hunting Land Marlin, Falls County, TX 76661

CONFIDENTIALITY & DISCLAIMER

The information contained in the following Investment Brochure is proprietary and strictly confidential. It is intended to be reviewed only by the party receiving it from Dube's Commercial, Inc., DBA Texas Farm and Ranch Realty and should not be made available to any other person or entity without the written consent of Dube's Commercial, Inc., DBA Texas Farm and Ranch Realty. This Investment Brochure has been prepared to provide summary information to prospective investors, and to establish only a preliminary level of interest in the subject property. The information contained herein is not a substitute for a thorough due diligence investigation. Dube's Commercial, Inc., DBA Texas Farm and Ranch Realty makes no warranty or representation, with respect to the income or expenses for the subject property, the future projected financial performance of the property, the size and square footage of the property and improvements, the presence or absence of contaminating substances, PCB's or asbestos, the compliance with State and Federal regulations, the physical condition of the improvements thereon, or the financial condition or business prospects, or any buyer's plans or intentions to continue its ownership of the subject property. The information contained in this Investment Brochure has been obtained from sources we believe to be reliable; however, Dube's Commercial, Inc., DBA Texas Farm and Ranch Realty makes no warranty or representation whatsoever regarding the accuracy or completeness of the information provided.



Bob Dube 254-803-5263 (LAND) 512-423-6670 (mobile)

bob@texasfarmandranchrealty.com www.texasfarmandranchrealty.com



Information About Brokerage Services

Before working with a real estate broker, you should know that the duties of a broker depend on whom the broker represents. If you are a prospective seller or landlord (owner) or a prospective buyer or tenant (buyer), you should know that the broker who lists the property for sale or lease is the owner's agent. A broker who acts as a subagent represents the owner in cooperation with the listing broker. A broker who acts as a buyer's agent represents the buyer. A broker may act as an intermediary between the parties if the parties consent in writing. A broker can assist you in locating a property, preparing a contract or lease, or obtaining financing without representing you. A broker is obligated by law to treat you honestly.

IF THE BROKER REPRESENTS THE OWNER:

The broker becomes the owner's agent by entering into an agreement with the owner, usually through a written - listing agreement, or by agreeing to act as a subagent by accepting an offer of subagency from the listing broker. A subagent may work in a different real estate office. A listing broker or subagent can assist the buyer but does not represent the buyer and must place the interests of the owner first. The buyer should not tell the owner's agent anything the buyer would not want the owner to know because an owner's agent must disclose to the owner any material information known to the agent.

IF THE BROKER REPRESENTS THE BUYER:

The broker becomes the buyer's agent by entering into an agreement to represent the buyer, usually through a written buyer representation agreement. A buyer's agent can assist the owner but does not represent the owner and must place the interests of the buyer first. The owner should not tell a buyer's agent anything the owner would not want the buyer to know because a buyer's agent must disclose to the buyer any material information known to the agent.

IF THE BROKER ACTS AS AN INTERMEDIARY:

A broker may act as an intermediary between the parties if the broker complies with The Texas Real Estate License Act. The broker must obtain the written consent of each party to the transaction to act as an

intermediary. The written consent must state who will pay the broker and, in conspicuous bold or underlined print, set forth the broker's obligations as an intermediary. The broker is required to treat each party honestly and fairly and to comply with The Texas Real Estate License Act. A broker who acts as an intermediary in a transaction:

(1) shall treat all parties honestly;

(2) may not disclose that the owner will accept a price less than the asking price unless authorized in writing to do so by the owner;

(3) may not disclose that the buyer will pay a price greater than the price submitted in a written offer unless authorized in writing to do so by the buyer; and

(4) may not disclose any confidential information or any information that a party specifically instructs the broker in writing not to disclose unless authorized in writing to disclose the information or required to do so by The Texas Real Estate License Act or a court order or if the information materially relates to the condition of the property.

With the parties' consent, a broker acting as an intermediary between the parties may appoint a person who is licensed under The Texas Real Estate License Act and associated with the broker to communicate with and carry out instructions of one party and another person who is licensed under that Act and associated with the broker to communicate with and carry out instructions of the other party.

If you choose to have a broker represent you, you should enter into a written agreement with the broker that clearly establishes the broker's obligations and your obligations. The agreement should state how and by whom the broker will be paid. You have the right to choose the type of representation, if any, you wish to receive. Your payment of a fee to a broker does not necessarily establish that the broker represents you. If you have any questions regarding the duties and responsibilities of the broker, you should resolve those questions before proceeding.

Real estate licensee asks that you acknowledge receipt of this information about brokerage services for the licensee's records.

Buyer, Seller, Landlord or Tenant

Date

Texas Real Estate Brokers and Salespersons are licensed and regulated by the Texas Real Estate Commission (TREC). If you have a question or complaint regarding a real estate licensee, you should contact TREC at P.O. Box 12188, Austin, Texas 78711-2188, 512-936-3000 (<http://www.trec.texas.gov>)

(TAR-2501) 10-10-11

TREC No. OP-K

Dube's Commercial Inc 401 Congress Austin, TX 78701
Phone: (512)423-6670

Fax: (512)671-8011

Robert Dube

Untitled

Produced with ZipForm® by zipLogix 18070 Fifteen Mile Road, Fraser, Michigan 48026 www.zipLogix.com