



This map is not the official regulatory FIRM or DFIRM. Its purpose is to assist with determining potential flood risk for the selected location.

Map Created on 11/5/2014



Location of the mouse click



**Flood Hazard Zone**  
(1% annual chance floodplain)

#### User Notes:

#### Disclaimer:

The online map is for use in administering the National Flood Insurance Program. It does not necessarily identify all areas subject to flooding, particularly from local drainage sources of small size. To obtain more detailed information in areas where Base Flood Elevations have been determined, users are encouraged to consult the latest Flood Profile data contained in the official flood insurance study. These studies are available online at [www.msc.fema.gov](http://www.msc.fema.gov).

WV Flood Tool is supported by FEMA, WV NFIP Office, and WV GIS Technical Center  
(<http://www.MapWV.gov/flood>)

#### Flood Hazard Area:

**Elevation:** About 1277 feet

**Location (long, lat):** 78.571879 W, 39.446282 N

**Location (UTM 17N):** (708940, 4369117)

**FEMA Issued Flood Map:** 54027C0130C

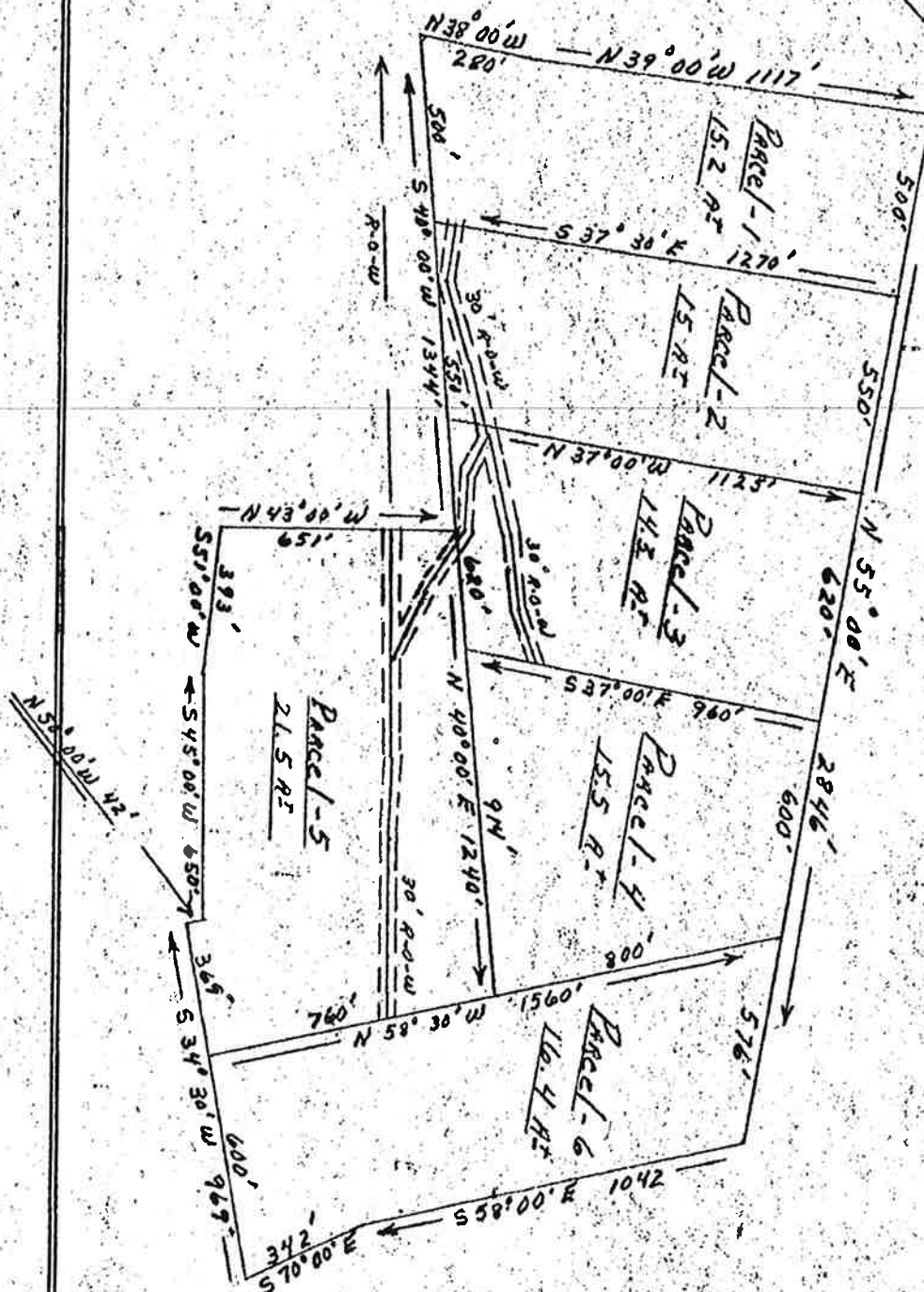
**Contacts:** Hampshire County

**CRS Information:** Hampshire County

**Parcel Number:**



**ALLEN BLUEPRINT and SUPPLY CO.**  
912 Virginia St., E. Charleston, W. Va. 25301



Scale  
1" = 400'

Surveyed: March 10, 1970.  
Clinton Ritter, Surveyor