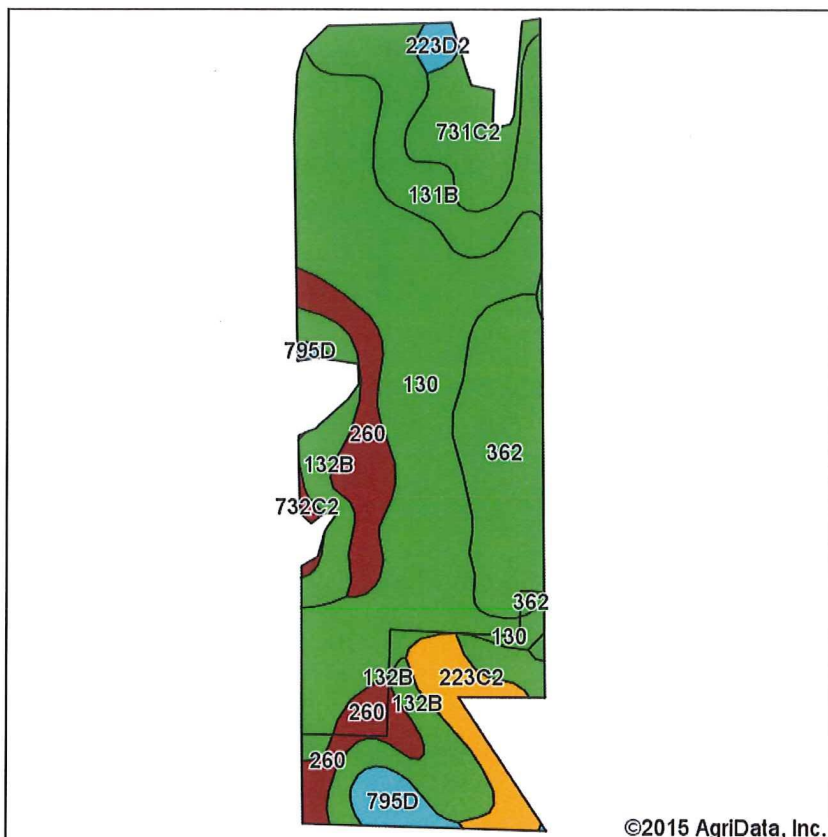
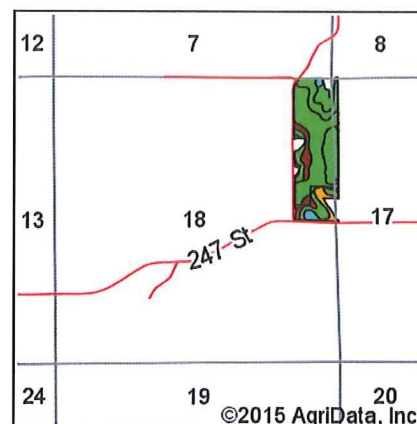


## Soils Map-CSR2



Soils data provided by USDA and NRCS.

©2015 AgriData, Inc.



State: **Iowa**  
 County: **Monroe**  
 Location: **18-71N-17W**  
 Township: **Monroe**  
 Acres: **44.81**  
 Date: **3/30/2015**

**Hawkeye Farm Mgmt & Real Estate**

**United Country Real Estate**  
 22 N Main, Atalia IA Phone: 641-932-7796  
 Email: hawkeye@ucia.com  
 On the web: www.ucia.com www.hawkeyefarm.com



Maps Provided By:  
**surety**  
 CUSTOMIZED ONLINE MAPPING  
 © AgriData, Inc. 2014 www.AgridataInc.com

Area Symbol: IA135, Soil Area Version: 22

Code	Soil Description	Acres	Percent of field	**CSR2 Legend	Non-Irr Class	CSR2**	CSR
130	Belinda silt loam, 0 to 2 percent slopes	17.45	38.9%		IIIw	76	63
362	Haig silty clay loam, 0 to 2 percent slopes	5.91	13.2%		IIw	83	70
131B	Pershing silt loam, 2 to 5 percent slopes	4.95	11.0%		IIIe	70	67
132B	Weller silt loam, 2 to 5 percent slopes	4.74	10.6%		IIIe	69	60
260	Beckwith silt loam, 0 to 2 percent slopes	4.39	9.8%		IIIw	51	56
731C2	Pershing silty clay loam, 5 to 9 percent slopes, moderately eroded	3.50	7.8%		IIIe	60	45
223C2	Rinda silty clay loam, 5 to 9 percent slopes, moderately eroded	2.15	4.8%		IVw	33	22
795D	Ashgrove silt loam, 9 to 14 percent slopes	1.13	2.5%		IVe	5	12
223D2	Rinda silty clay loam, 9 to 14 percent slopes, moderately eroded	0.40	0.9%		IVe	8	9
732C2	Weller silty clay loam, 5 to 9 percent slopes, moderately eroded	0.19	0.4%		IIIe	56	40
Weighted Average						67.3	58.1

Area Symbol: IA135, Soil Area Version: 22

\*\*IA has updated the CSR values for each county to CSR2.

Soils data provided by USDA and NRCS.