

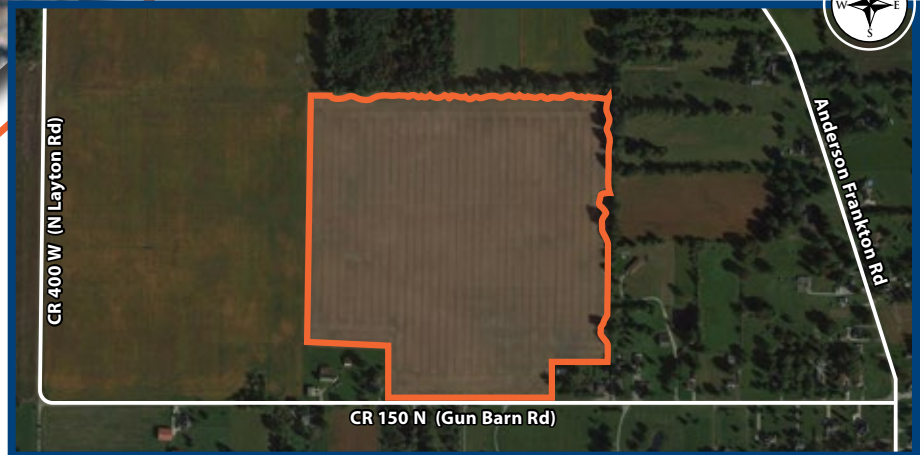
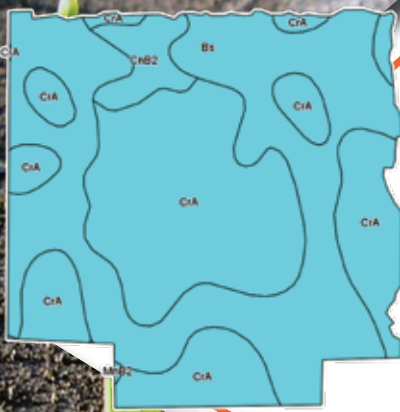
# LAND FOR SALE

## PRIME FARMLAND NEAR ANDERSON

# 42.5<sup>+/-</sup> ACRES

ANDERSON TWP • MADISON COUNTY

### SOILS



Code	Soil Description	Acres	Corn	Soybeans
Field borders provided by Farm Service Agency as of 5/21/2008. Soils data provided by USDA and NRCS.				
CrA	Crosby silt loam, fine loamy subsoil, 0 to 2 percent slopes	21.31	151	50
Bs	Brookston silty clay loam, 0 to 2 percent slopes	19.41	173	51
CnB2	Celina silt loam, 2 to 6 percent slopes, moderately eroded	1.68	112	40
Weighted Average			159.5	50.1

## PROPERTY INFORMATION

**LOCATION:** ON THE NORTH SIDE OF CR 150 N (GUN BARN RD),  
1/4 MILE EAST OF CR 400 W (N LAYTON RD)

**ZONING:** AGRICULTURAL

**TOPOGRAPHY:** LEVEL

**SCHOOL DISTRICT:** ANDERSON  
COMMUNITY SCHOOLS

**ANNUAL TAXES:** \$2,024.00



**JOHN MINER**  
GREENTOWN, IN  
**765-628-7278**  
JOHNM@HALDERMAN.COM

**MICHAEL BONNELL**  
GREENFIELD, IN  
**812-343-6036**  
MICHAELB@HALDERMAN.COM



**DOWNLOAD!**  
Halderman Real Estate App  
Available on Android & Apple iOS



**HALDERMAN**  
REAL ESTATE  
SERVICES

HLS# JMM-11591 (15)

800.424.2324 | www.halderman.com