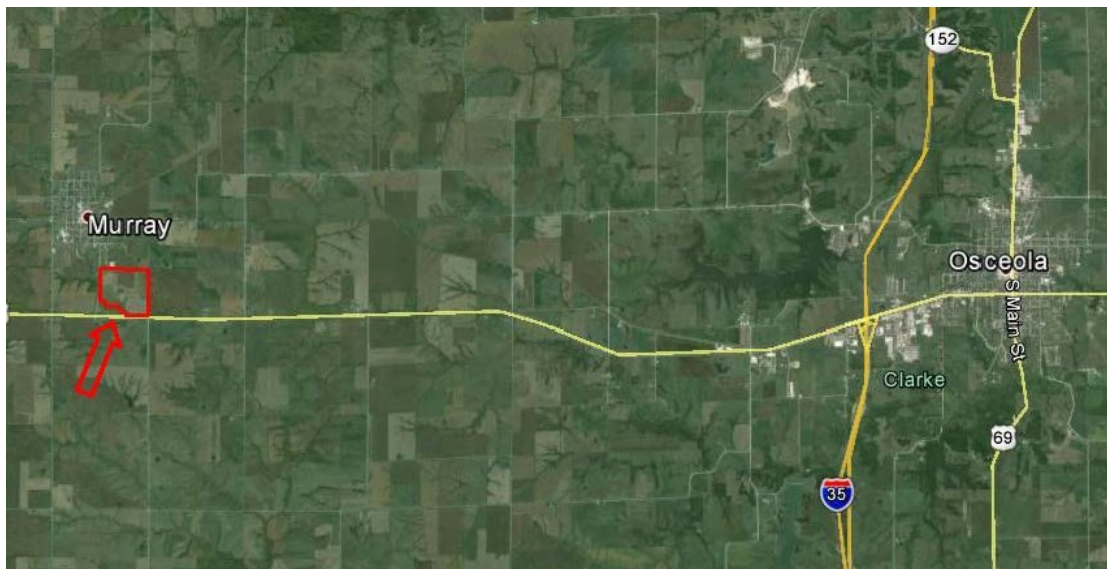


LAND FOR SALE



135 ACRES M/L CLARKE COUNTY, IOWA



LISTING #12487

PRICE: \$549,000 (\$4,067/Acre)

DESCRIPTION: 135 acres m/l of Clarke County farm ground located north of Highway 34 on the southeast side of Murray. Farm consists of 123.57 DCP crop acres per the Clarke County FSA office. Currently farming 85 acres carrying a 48.7 CSR2. Approximately 44 acres of pasture in two separate areas. The northeast pasture is nearly 20 acres, has a large pond, and gently slopes to the east. The west pasture is about 25 acres with a creek and pond overflow water source. These pastures are perfect for rotational grazing or splitting herds. Improvements include a 1470 sq. /ft. house on the northwest side of farm. This home has 4 bedrooms and 1 bath, as well as a detached garage and large older barn. This is a great combination farm with quality tillable and pasture acres in a great location.

DIRECTIONS: Property is located on the southeast side of Murray. The farm surrounds the local cemetery and is northeast of the Highway 34 and 135th Avenue intersection.

TAXES: \$3276 Annually

FARM PROGRAM INFORMATION:

DCP Cropland- 123.57
Corn Base: 28.2 Acres with a Direct and CC Yield of 97
Bean Base: 9.9 Acres with a Direct and CC Yield of 23
Oats Base: 9.4 Acres with a Direct and CC Yield of 49
Total Base Acres: 47.5

KYLE WALKER

C: 515.291.5766

O: 515.222.1347

Kyle@PeoplesCompany.com

© 2015 Peoples Company We obtained this information from sources we believe to be reliable. However, we have not verified its accuracy and make no guarantee, warranty or representation about it. It is submitted subject to the possibility of errors, omissions, change of price, rental or other conditions, prior sale, lease or financing, or withdrawal without notice. We include projections, opinions, assumptions or estimates for example only and they may not represent current or future performance of the property. You and your tax and legal advisors should conduct your own investigation of the property and transaction.