

Lila Robin  
Mobile: 601-748-3080  
lrobin4cp@gmail.com



Office: 601-990-2132  
Fax: 601-952-2829  
www.4cornerprop.com

## Build Your Dream Home! 13+/- Acres Copiah County

- Excellent homesite
- Wesson School District!
- Plenty of road frontage!
- Will divide!
- Power and Water
- Great country living!



**\$70,000**



Build your dream home! 13+/- acres located in Wesson, MS in the much desired Wesson School District! Road frontage on Swilley Road, will divide, call me for details.

Quite living in the country!



4 Corner Properties, LLC  
121 HWY 51 N  
Brookhaven, MS 39601  
601.990.2132  
www.4cornerprop.com



Information is Believed to be Accurate but not Guaranteed



**Copiah - 13 Ac.**



**T9N-R10E**

bing

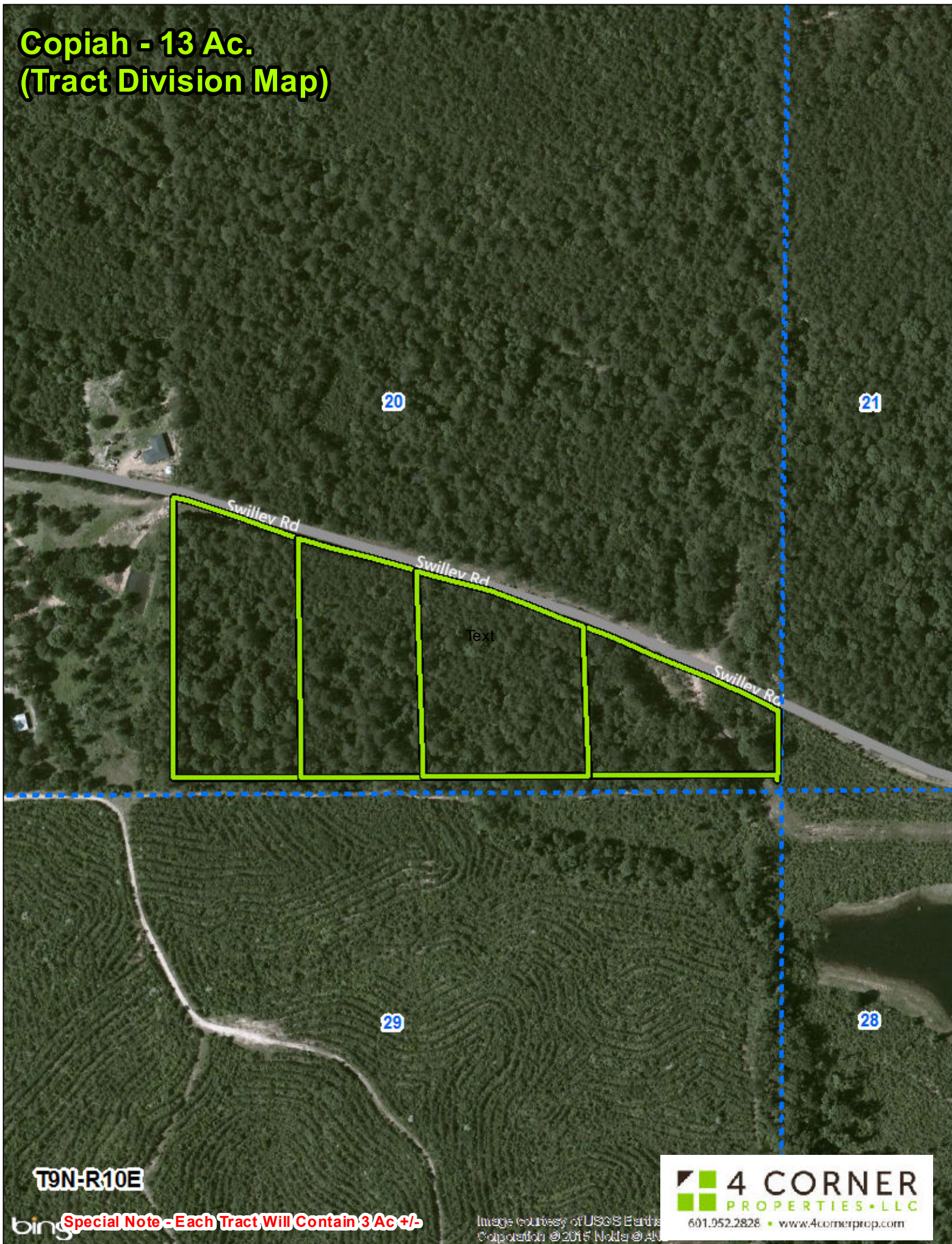
Image courtesy of USGS Earth  
Cooperation © 2015 NOAA/ATLAS

**4 CORNER**  
PROPERTIES • LLC

601.952.2828 • [www.4cornerprop.com](http://www.4cornerprop.com)



# Copiah - 13 Ac. (Tract Division Map)



T9N-R10E

**Special Note - Each Tract Will Contain 3 Ac +/-**

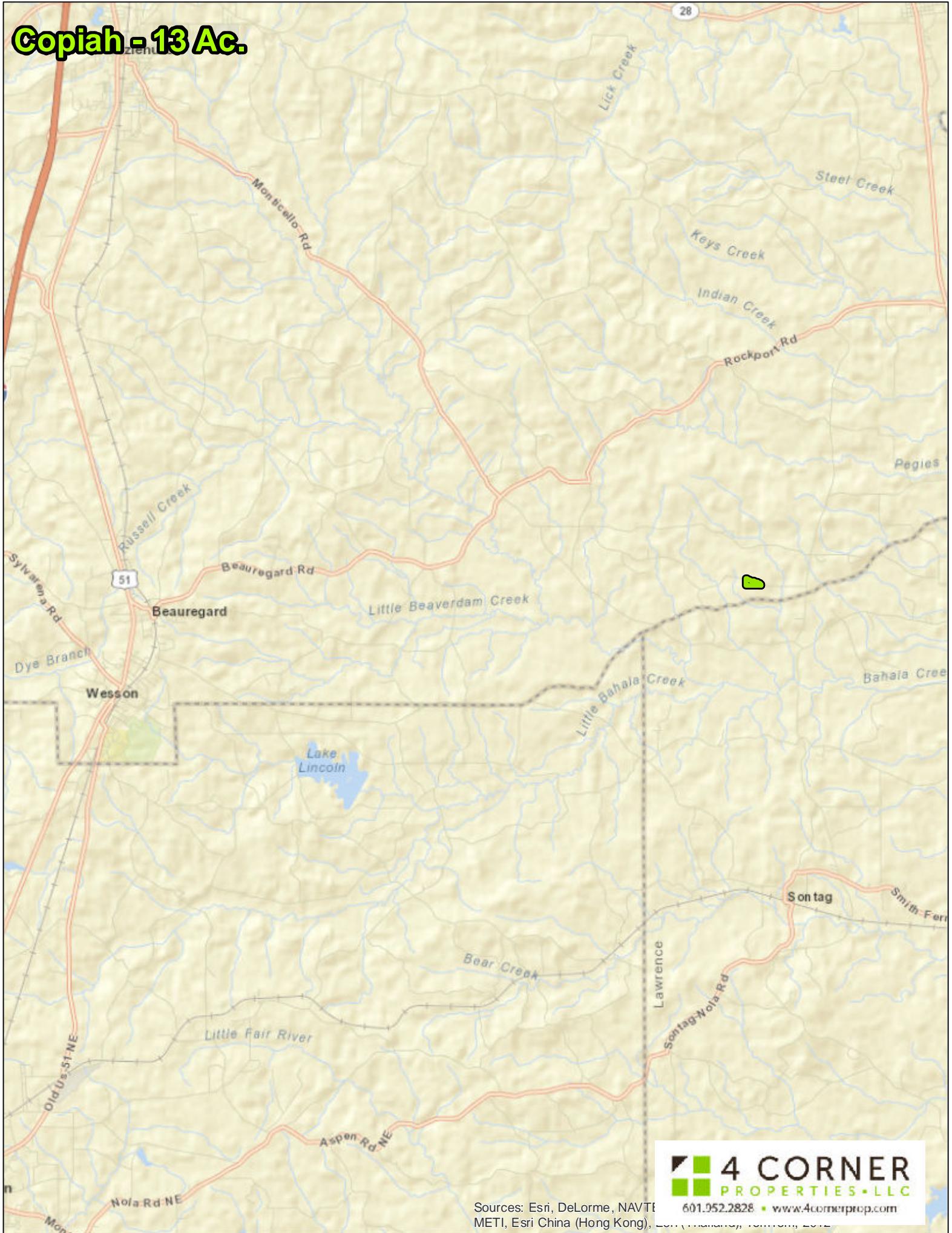
**4 CORNER**  
PROPERTIES • LLC

601.952.2828 • [www.4cornerprop.com](http://www.4cornerprop.com)

Image courtesy of USGS Earth  
Corporation © 2015 Notts © AN



**Copiah - 13 Ac.**



Sources: Esri, DeLorme, NAVTEQ, METI, Esri China (Hong Kong), SONY, Swire, etc. 601.952.2828 • [www.4cornerprop.com](http://www.4cornerprop.com)



**Copiah - 13 Ac.**

20

21

Gravel Pit

322

300

29

28

NDARY

300

**T9N-R10E**

**4 CORNER**  
PROPERTIES • LLC  
601.952.2828 • [www.4cornerprop.com](http://www.4cornerprop.com)

Copyr

ed