

- 36+/- Acres Amite County, MS!
- Pine plantation ready to thin
- Tickfaw river transverses the property
- Easy Access and Lots of Road Frontage!
- All utilities on property
- Possible “as is” fixer up home with storage building and large shed. This property is a must see!



**\$135,000**

## AMITE COUNTY MULTI-USE TRACT



“Fix up” the existing home or build your own home or camp!!! This 36+/- acre tract is perfect for country living or weekend get a ways. All utilities on site. The tract is located far enough from town for privacy, peace, and quiet; but, close enough to make needed trips in just a few minutes. The tract has great access and loads of road frontage. It contains pine plantation stands that are ready to thin and a mix of hardwood running along the banks of the meandering Tickfaw and bottom land. Wildlife and hunter heaven. The additional improvements include a large shed and storage building. Call Keith today for more information or to schedule your private showing



**Keith Carruth**  
Realtor®, Land Specialist  
**4 Corner Properties, LLC (4CP)**  
855 South Pear Orchard, Suite  
401, Ridgeland, MS 39157





Keith Carruth  
Realtor<sup>®</sup>,  
Land Specialist  
Mobile 601-503-5392  
KCarruth@4CornerProp.com



# Amite - 36 Ac.



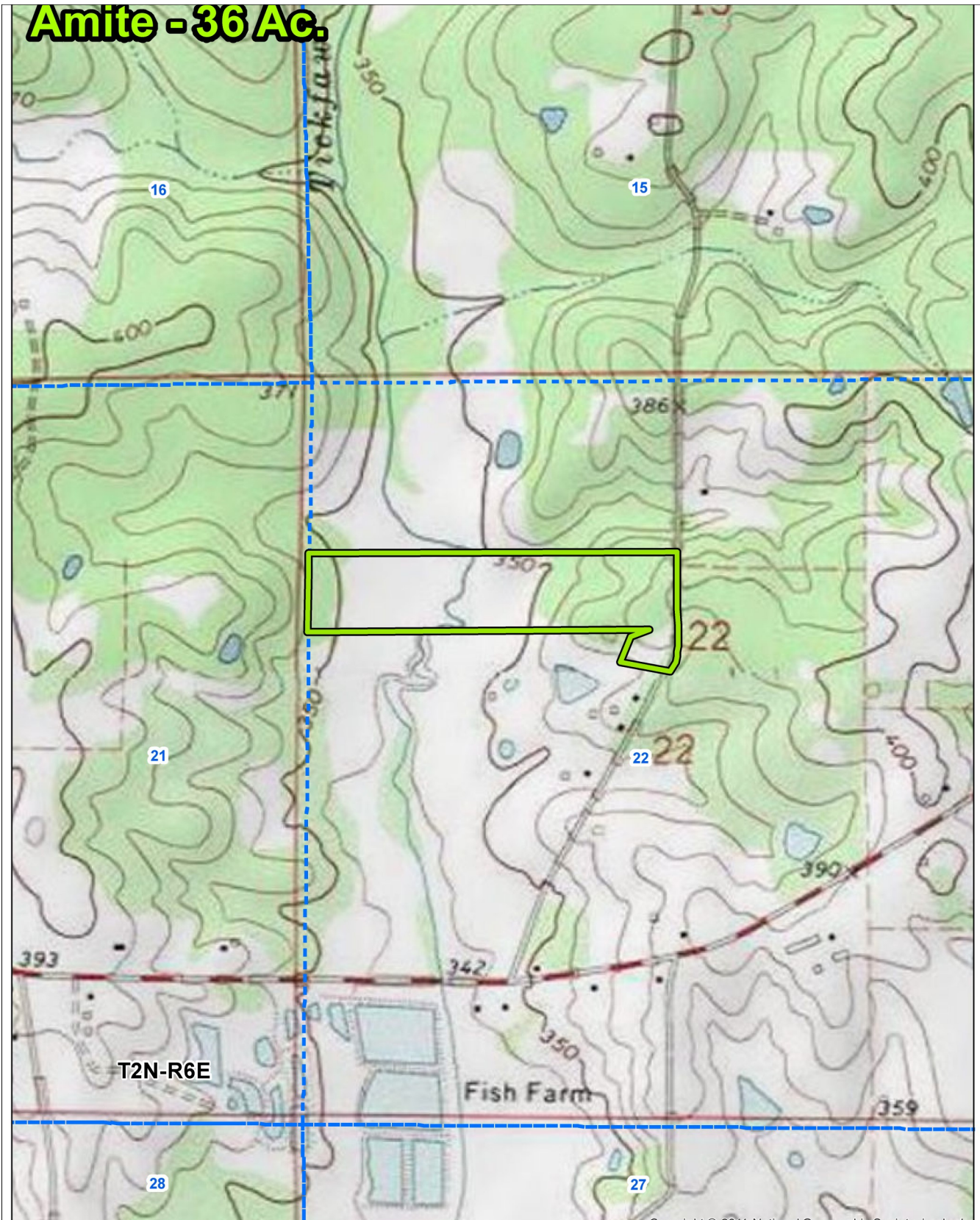
Aerial



Keith Carruth  
Realtor®,  
Land Specialist  
Mobile 601-503-5392  
KCarruth@4CornerProp.com



**Amite - 36 Ac.**

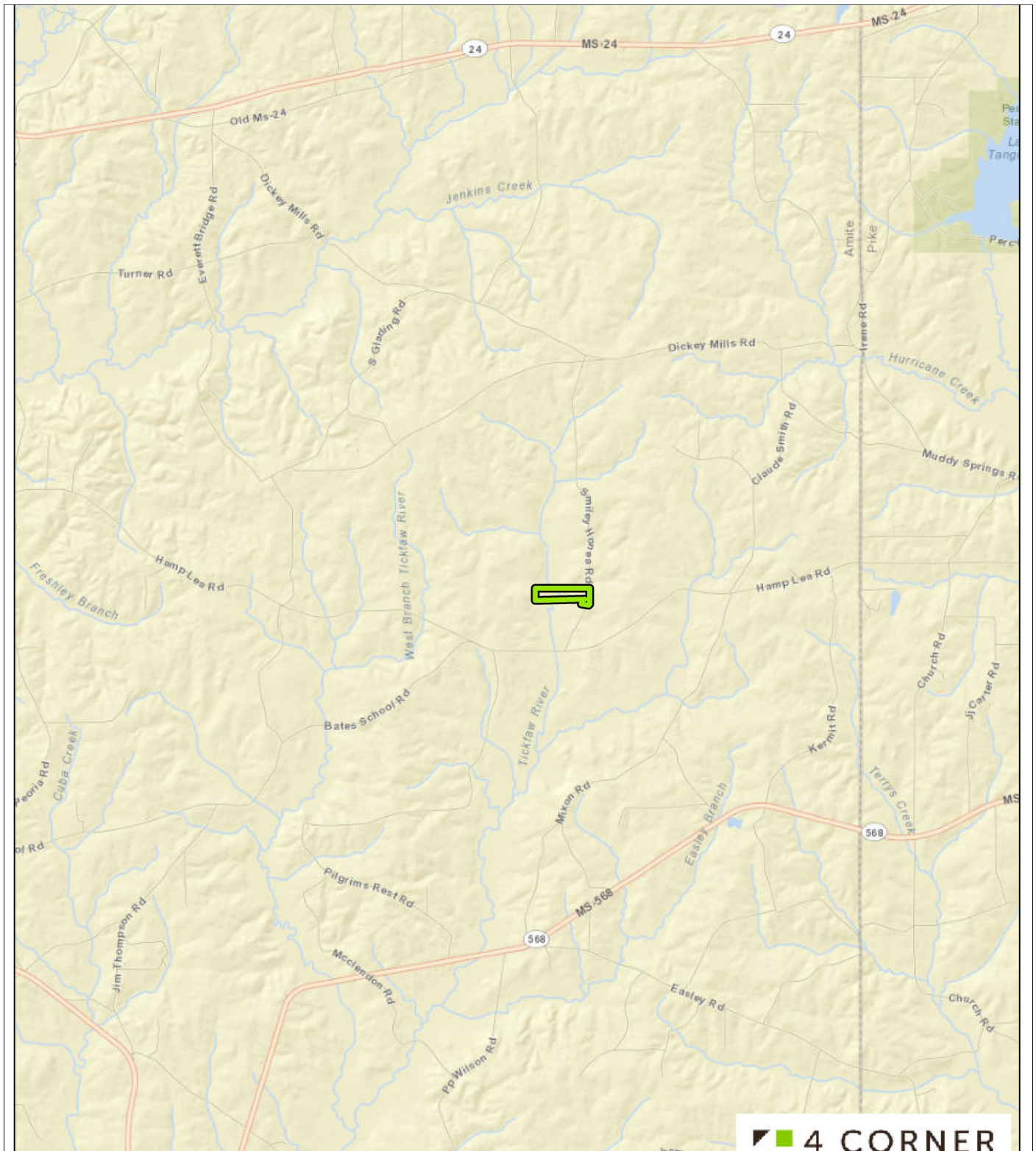


Topo Map



Keith Carruth  
Realtor®,  
Land Specialist  
Mobile 601-503-5392  
KCarruth@4CornerProp.com





Directional



Keith Carruth  
 Realtor®,  
 Land Specialist  
 Mobile 601-503-5392  
[KCarruth@4CornerProp.com](mailto:KCarruth@4CornerProp.com)