



# 131 Bremer Lane, Howard, CO 81233



## Property At A Glance

3.63 Acres

840 SF

35x40 steel 3 car & RV garage

2Bedrooms/1Bath

Heating: Forced Air Propane

In-house Well

Sewer: Septic

Flooring: Carpet, Vinyl

Exterior: Metal, Roofing: Metal

Garage: Carport, RV Parking

2013 Taxes: \$512

**\$189,900**



**MLS #230183**



**Directions: Highway 50 to County Road 47 (Cherry Creek Road) go 3 miles. Then left on Smith Lane, Right on Bremer Road, right on Bremer Lane (red metal star on tree) to 3rd driveway and sign on right.**



**NANCY HOLLEN, CRS, GRI,**

**BROKER ASSOCIATE**

**CELL: 719.530.1217**

**OFFICE: 719.539.6682**

**E-MAIL: NANCY@NANCYHOLLEN.COM**



FIRST COLORADO  
LAND OFFICE

*Your Needs - First*



FIRST COLORADO  
LAND OFFICE

*Your Needs - First*

**OFFICE 719.539.6682 CELL 719.530.1217**

**WWW.FIRSTCOLORADO.COM**

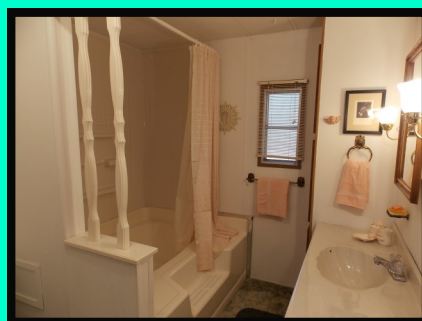
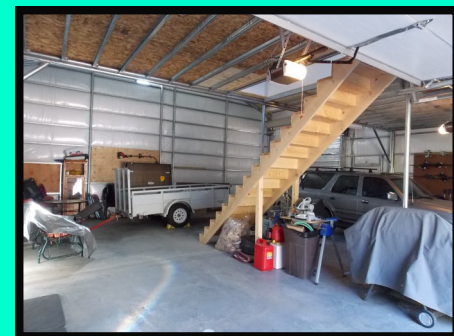
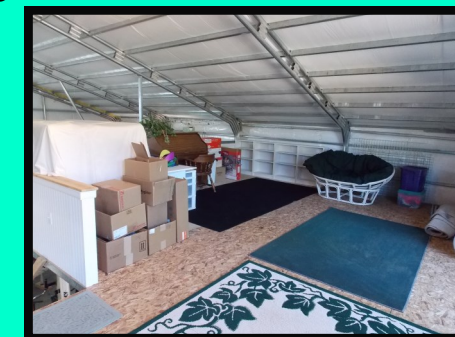
**WWW. NANCYHOLLEN.COM**



Ideal second home or RV “Paradise”. This property is in immaculate condition and is private and secluded at the end of the road. You will love all the tall Ponderosa Pines on the 3.63 acres. Besides the delightful home, a big bonus is the 35’ x 40’ steel building with a 20’ x 35’ loft. You can put 3 full-sized vehicles plus a large RV in the building at one time and still have workshop space. Use the loft for storage or a hangout for your teenagers. Only 5 minutes to Highway 50 and then 15 minutes to Salida, CO. Fishing, rafting, kayaking, hiking, skiing, snowmobiling, shopping, etc are all very close.

Inclusions: Gas range, refrigerator, washer/dryer, drink refrigerator

Exclusions: Seller’s Personal Property



Disclaimer: All data, measurements, square footage, etc. in this brochure deemed reliable.

No warranties or representations in this brochure expressed or implied.