

Mobile: 601.347.3622  
ariser@4cornerprop.com  
www.mslandpro.com



Call Alex Today!  
Office: 601.952.2828  
Fax: 601.952.2829

- 40 Acres in Jefferson Davis County
- Loaded w/ Pine and Scattered Hardwoods
- Utilities in Place
- 3BR/2BA Camp
- Food Plots in Place
- Ideal Get-Away Tract
- Paved Road Frontage
- Loaded with Deer & Turkey



## 40 ACRES IN JEFFERSON DAVIS COUNTY

**\$110,000**

*Includes Furnished Camp, Food Plots, Stands..... TURN KEY!!!*



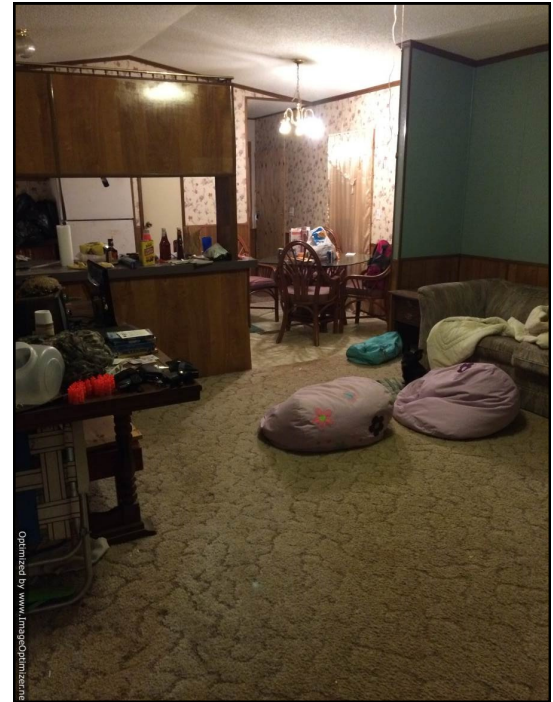
**What a tract in South MS! This property is located in Jefferson Davis County and offers some of the best hunting this part of the state has to offer. This property comes with a 3BR/2BA Camp that is fully furnished..... Just bring your gear!! The property is loaded with pine and hardwoods and has food plots with stands in place. This is a very secluded area with very minimal pressure on the wildlife. This is a very special opportunity that is hard to come by. Call today for your very own private showing.**



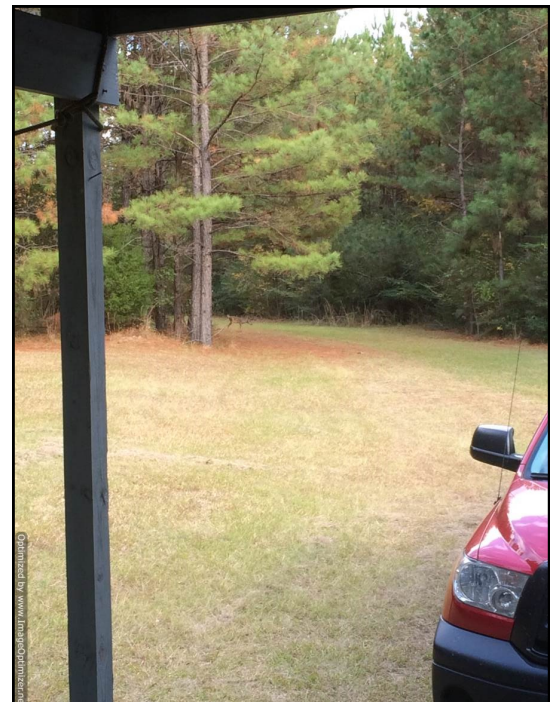
**Alex Riser**  
Certified Land Specialist  
4 Corner Properties, LLC  
855 S. Pear Orchard Rd. Ste. 401  
Ridgeland, MS 39157







**DEER RIGHT OUT IN FRONT THE  
CAMP!**



**BUCK IN THE FRONT YARD!**



**Alex Riser, CLS**  
**4 Corner Properties, LLC**  
**855 S. Pear Orchard Rd. Ste. 401**  
**Ridgeland, MS 39157**  
**[www.mslandpro.com](http://www.mslandpro.com)**







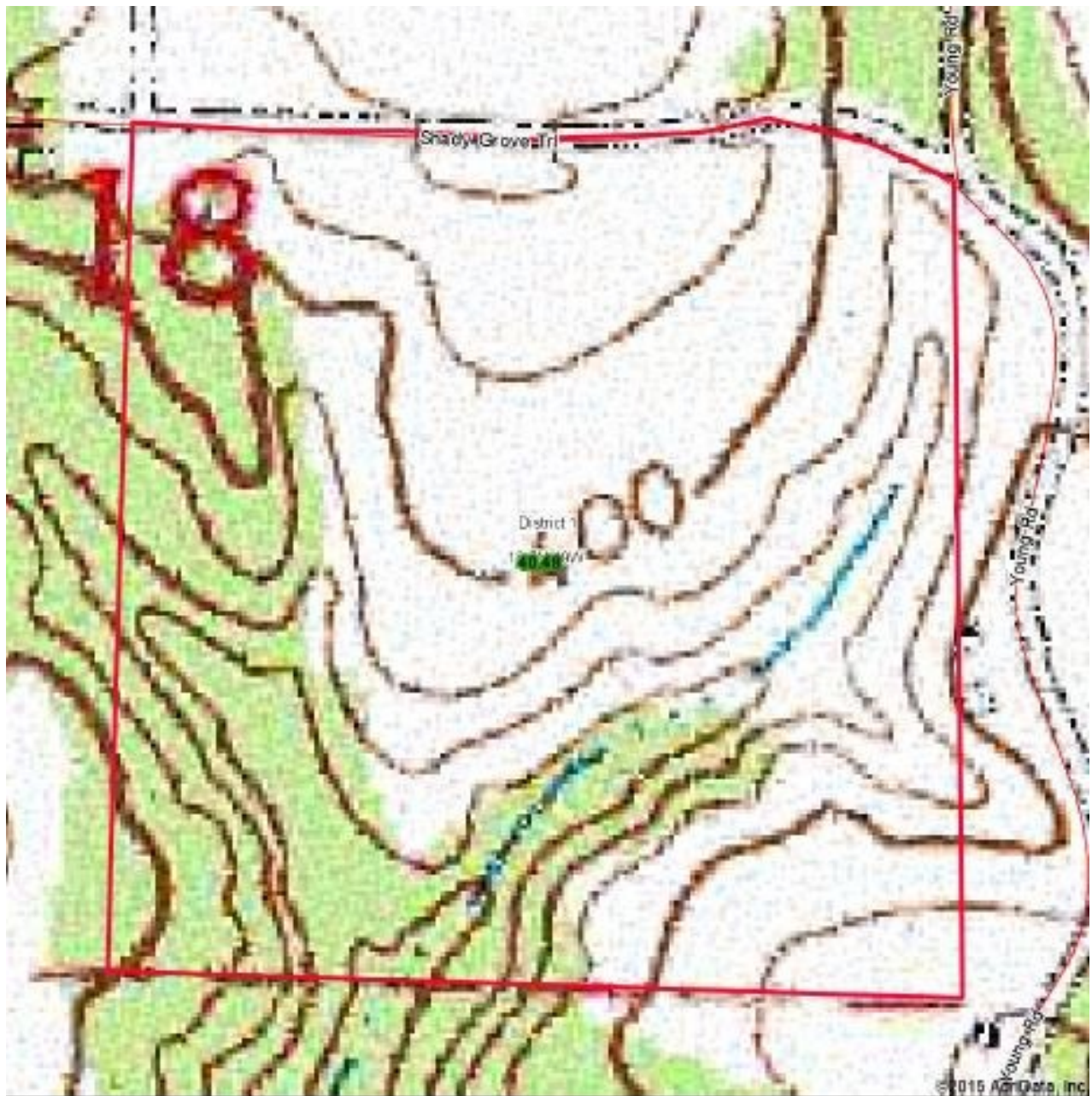
Aerial Map



**Alex Riser, CLS**  
**4 Corner Properties, LLC**  
**855 S. Pear Orchard Rd. Ste. 401**  
**Ridgeland, MS 39157**  
**[www.mslandpro.com](http://www.mslandpro.com)**







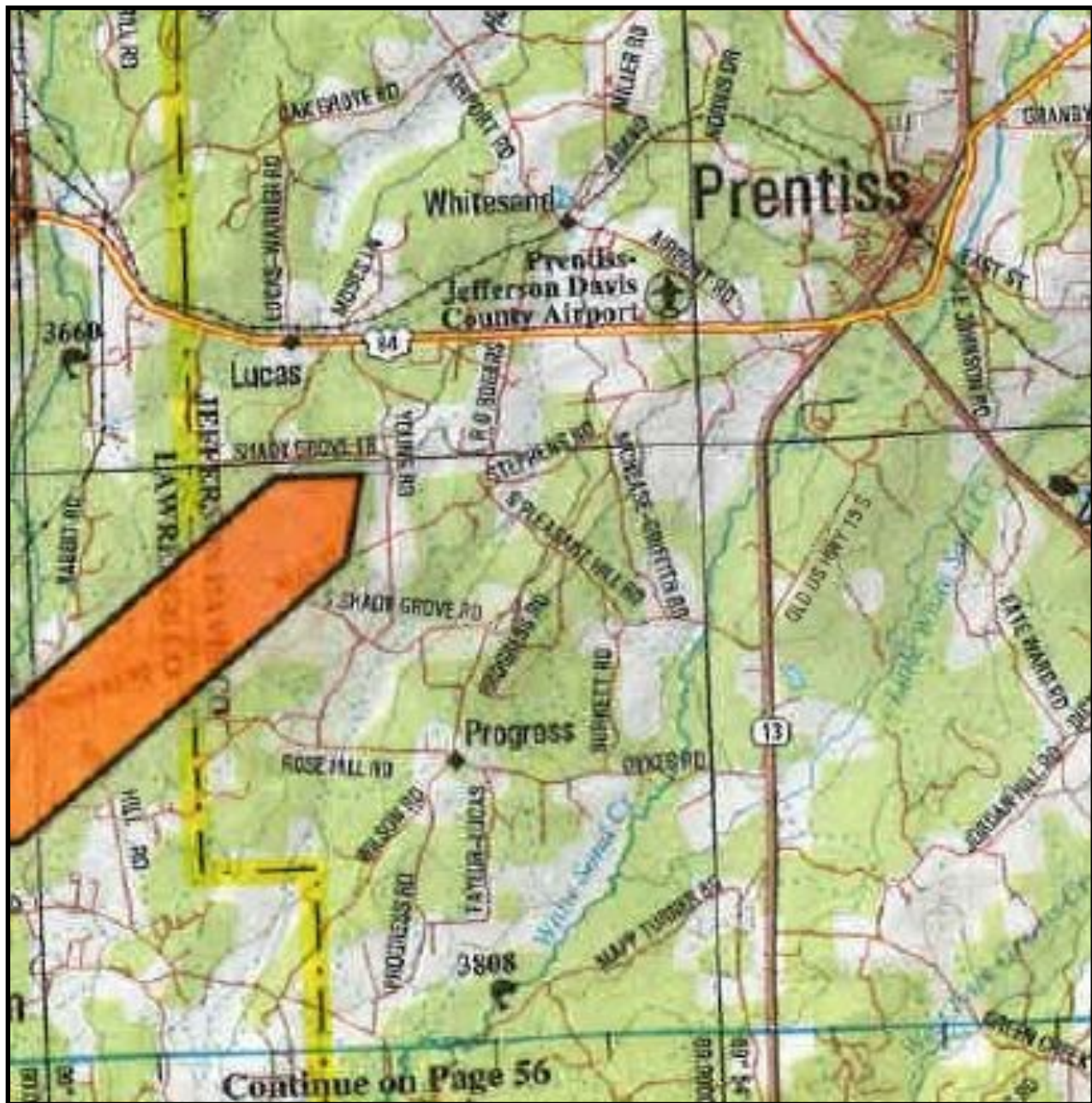
Topo Map



**Alex Riser, CLS**  
**4 Corner Properties, LLC**  
**855 S. Pear Orchard Rd. Ste. 401**  
**Ridgeland, MS 39157**  
**[www.mslandpro.com](http://www.mslandpro.com)**







*Directional Map*



Alex Riser, CLS  
 4 Corner Properties, LLC  
 855 S. Pear Orchard Rd. Ste. 401  
 Ridgeland, MS 39157  
[www.mslandpro.com](http://www.mslandpro.com)

