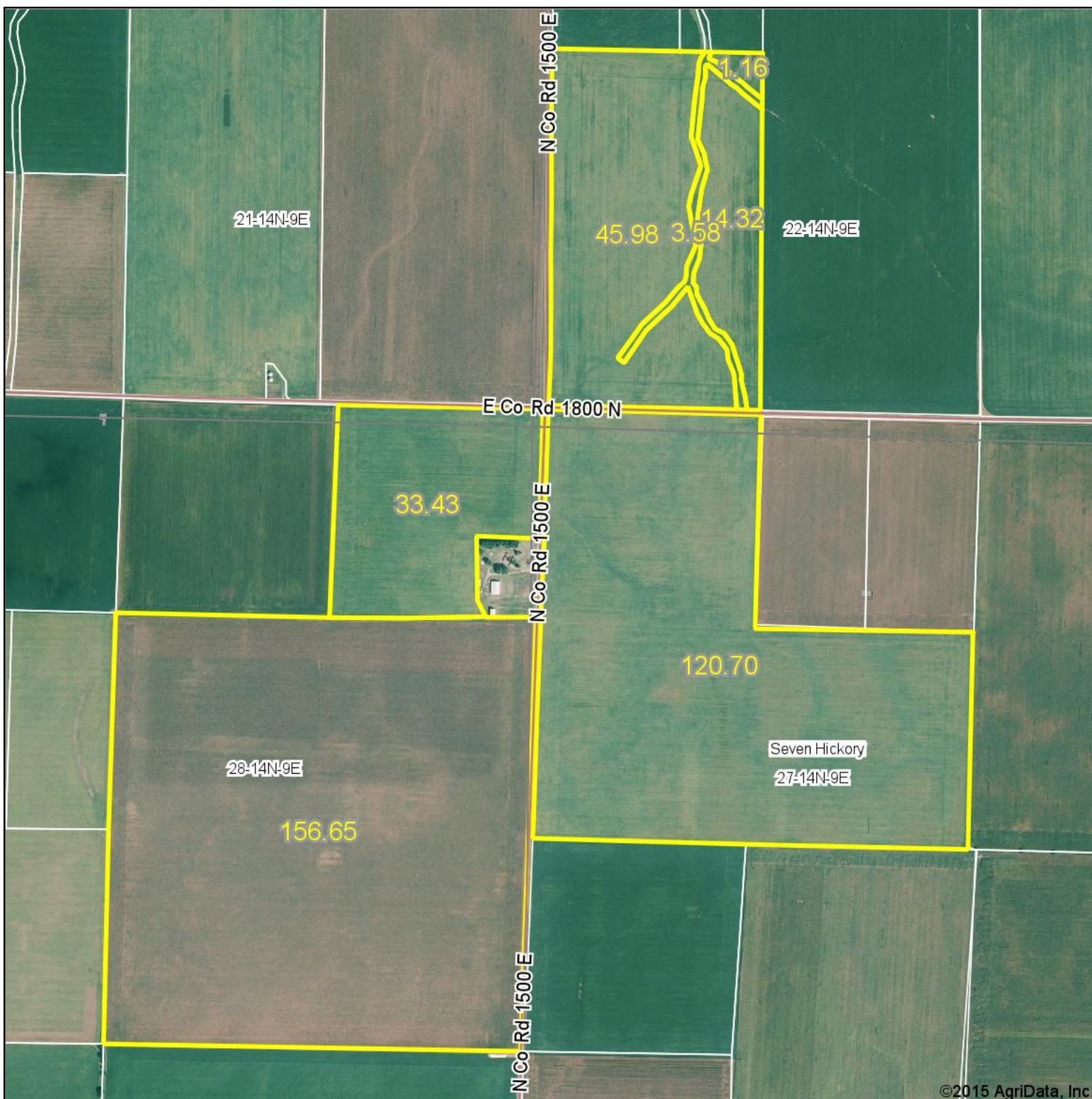


Aerial Map



©2015 AgriData, Inc.

CAPS CAPITAL AGRICULTURAL PROPERTY SERVICES

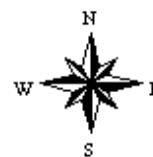
Maps Provided By:

surety®
CUSTOMIZED ONLINE MAPPING

© AgriData, Inc. 2014 www.AgriDataInc.com

27-14N-9E
Coles County
Illinois

map center: 39° 38' 7.1, 88° 11' 42.76
scale: 11021



2/26/2015