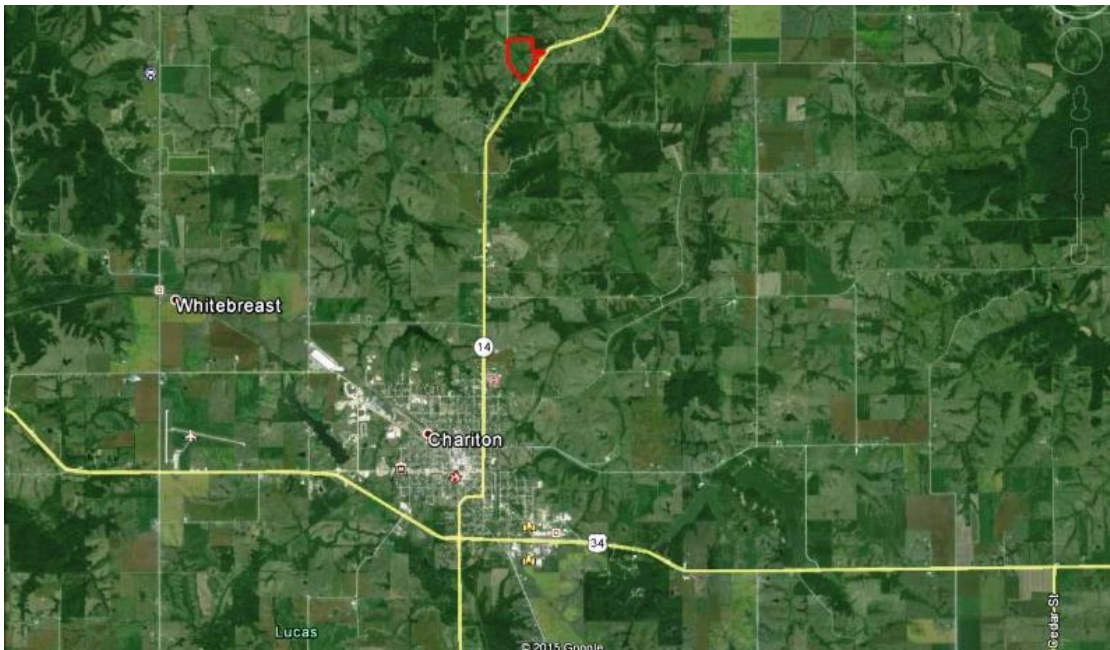


# LAND FOR SALE



## 58 ACRES M/L LUCAS COUNTY, IOWA



### LISTING #12371

**PRICE:** \$197,200 (\$3,400 acre)

**DESCRIPTION:** 58 Acres m/l in Lucas County, Iowa. This combination farm has a little bit of everything including 33 tillable acres with a CSR2 of 72.8, timber and a creek with access from both 235th Trail and Highway 14. Conveniently located just 4 miles north of Chariton.

**DIRECTIONS:** From Chariton: go north on Highway 14 four miles to 235th Trail. The property lies west of Highway 14 and east of 235th Trail.

**TAXES:** \$458.00 Annually

#### KENNY HERRING

C: 515.783.8718

O: 515.222.1347

Kenny@PeoplesCompany.com

#### DAVE MARLENEE

C: 515.991.0308

O: 515.222.1347

Dave@PeoplesCompany.com

© 2014 Peoples Company We obtained this information from sources we believe to be reliable. However, we have not verified its accuracy and make no guarantee, warranty or representation about it. It is submitted subject to the possibility of errors, omissions, change of price, rental or other conditions, prior sale, lease or financing, or withdrawal without notice. We include projections, opinions, assumptions or estimates for example only and they may not represent current or future performance of the property. You and your tax and legal advisors should conduct your own investigation of the property and transaction.