

CROPLAND FOR SALE IN CHEYENNE CO., KS



PROPERTIES FOR SALE:

SW/4 24-4-38

Approx. 156.25 acres
Located South of Bird City at the
intersection of Road I & 28

and

Approx. 36 acres in 36-3-38
located in Bird City

QUALITY DRYLAND IN CHEYENNE COUNTY, KANSAS

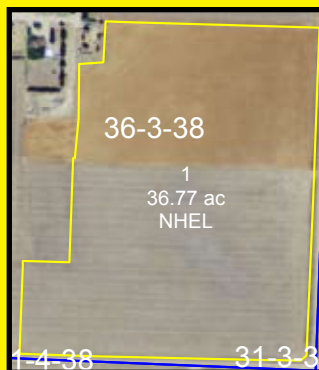
These parcels of excellent farm land are offered for sale
in separate transactions. Call to inquire today!

SW/4 24-4-38 Asking Price: \$2,600/acre or \$416,000.00

Minerals: Transfer to the Purchaser

Possession at closing **2014 Taxes:** \$576.06

FSA Crop Information: 78.0 Wheat Base Ac./Yield 39



FOR SALE

36.77 acres in 36-3-38

Asking Price:

\$2,600/ ac - \$95,600.00

Minerals:

Transfer to the Purchaser

Possession at closing

2014 Taxes: \$513.98

FSA Crop Information:
18.8 Wheat Base Ac./Yield 35

Western

Auction & Real Estate, LLC

785-332-8990

westernauctionandrealestate.com

P.O. Box 928 - St. Francis, KS 67756

Betty L. Petersen, Broker 785-332-8421

**Skip Petersen, Sales Agent
& Auctioneer 785-332-8221**

**Robin A. Petersen, Assoc. Broker
& Auctioneer 785-332-5586**

**Brett Petersen, Ks. Agent
& Auctioneer 785-332-7121**

Gary L. Wickwar, Ks. Agent 785-728-7049

"From Concept to Completion!"

Licensed in Kansas, Colorado & Nebraska

Information provided, while not guaranteed, is believed to be from reliable sources.