

KKN Enterprises, LLC Farm

240 Acres +/- in Towanda/Blue Mound Twps.
McLean County, Illinois



A DIVISION OF SOY CAPITAL BANK & TRUST COMPANY

FARMLAND FOR SALE

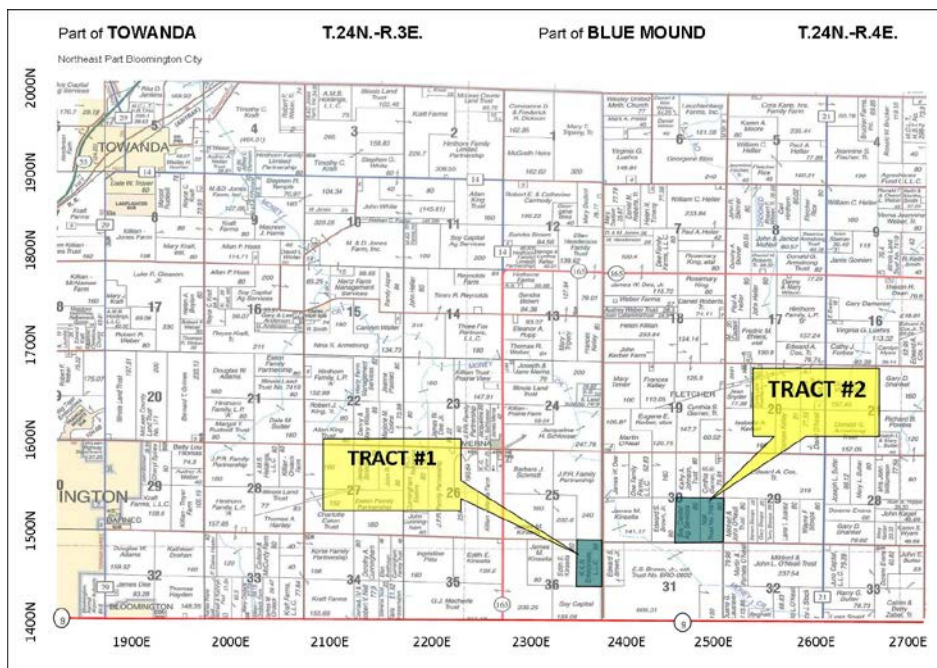
Location

Located 5 miles east of
Bloomington and 1 mile
north of Illinois Route 9.
135 miles southwest of
"The Loop" – Chicago,
Illinois.

LISTING PRICE:

Tract #1 - \$12,800/Acre
Sale Pending

Tract #2 - \$11,900/Acre



Reprinted with permission of Rockford Map Publishers, Inc.

Highlights:

Tract Sizes Estimated Soil Productivity Index

- Tract 1: 80 Acres +/- 140.6
- Tract 2: 160 Acres +/- 133.7

Primary Soils

- Mainly Sable, Drummer/El Paso silty clay loams & Ipava, Elkhart & Osco silt loams

10 Year Actual Average Yields

- Corn: 198.5
- Soybeans: 67.0

Prime Soils!



Call us for a complete brochure with details:

Kevin R. Meiss, Broker

kevin.meiss@soybank.com

(309) 665-0056 / 846-0458

David E. Klein, Managing Broker

dklein@soybank.com

(800) 532-LAND

6 Heartland Drive, Suite A - Bloomington, IL 61702

The information provided is believed to be accurate and representative. However, it is subject to verification and no liability for error or omissions is assumed. The property is being sold in "as is" condition with no financing or inspection contingencies. There are no warranties, expressed or implied, as to the information contained herein and it is recommended that all buyers make an independent inspection of the property with the assistance of the listing broker. Soy Capital Ag Services, a division of Soy Capital Bank and Trust Company is the listing Broker, Kevin Meiss, Real Estate broker is the designated agent and represents the Sellers in this transaction. Soy Capital, the Sellers and designated agent expressly disclaim any liability for errors, omissions or changes regarding any information provided. Potential buyers are urged to rely solely upon their own inspections and opinions in preparing to purchase this property and are expressly advised to not rely on any representations made by the Sellers or their agents. This farm is under lease for 2015. Call for details.

www.soycapitalag.com -- Twitter: @soycapitalag