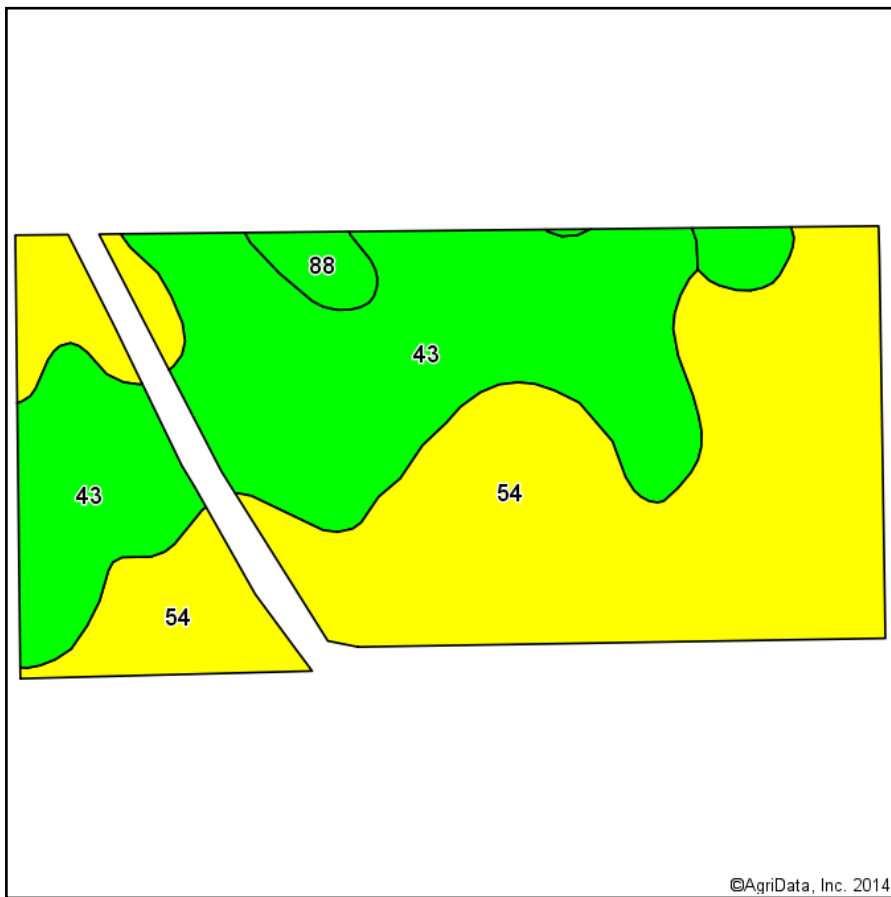
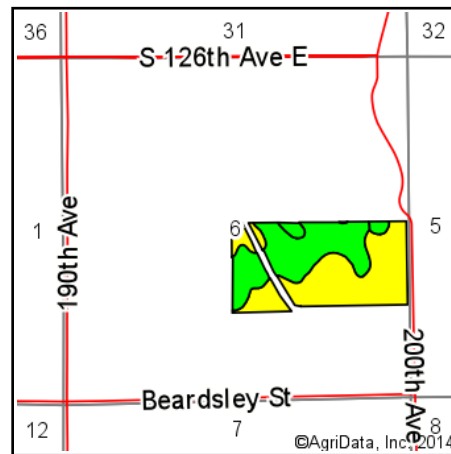


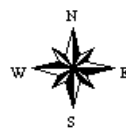
Soils Map-CSR2



Soils data provided by USDA and NRCS.



State: **Iowa**
 County: **Marion**
 Location: **6-77N-18W**
 Township: **Lake Prairie**
 Acres: **73.08**
 Date: **1/20/2015**



Area Symbol: IA125, Soil Area Version: 23

Code	Soil Description	Acres	Percent of field	**CSR2 Legend	Non-Irr Class	CSR2**	CSR
54	Zook silty clay loam, 0 to 2 percent slopes	39.75	54.4%		IIw	69	70
43	Bremer silty clay loam, 0 to 2 percent slopes	30.78	42.1%		IIw	78	82
88	Nevin silty clay loam, 0 to 2 percent slopes	2.55	3.5%		I	95	90
Weighted Average						73.7	75.8

Area Symbol: IA125, Soil Area Version: 23

**IA has updated the CSR values for each county to CSR2.

Field borders provided by Farm Service Agency as of 5/21/2008. Aerial photography provided by Aerial Photography Field Office.