

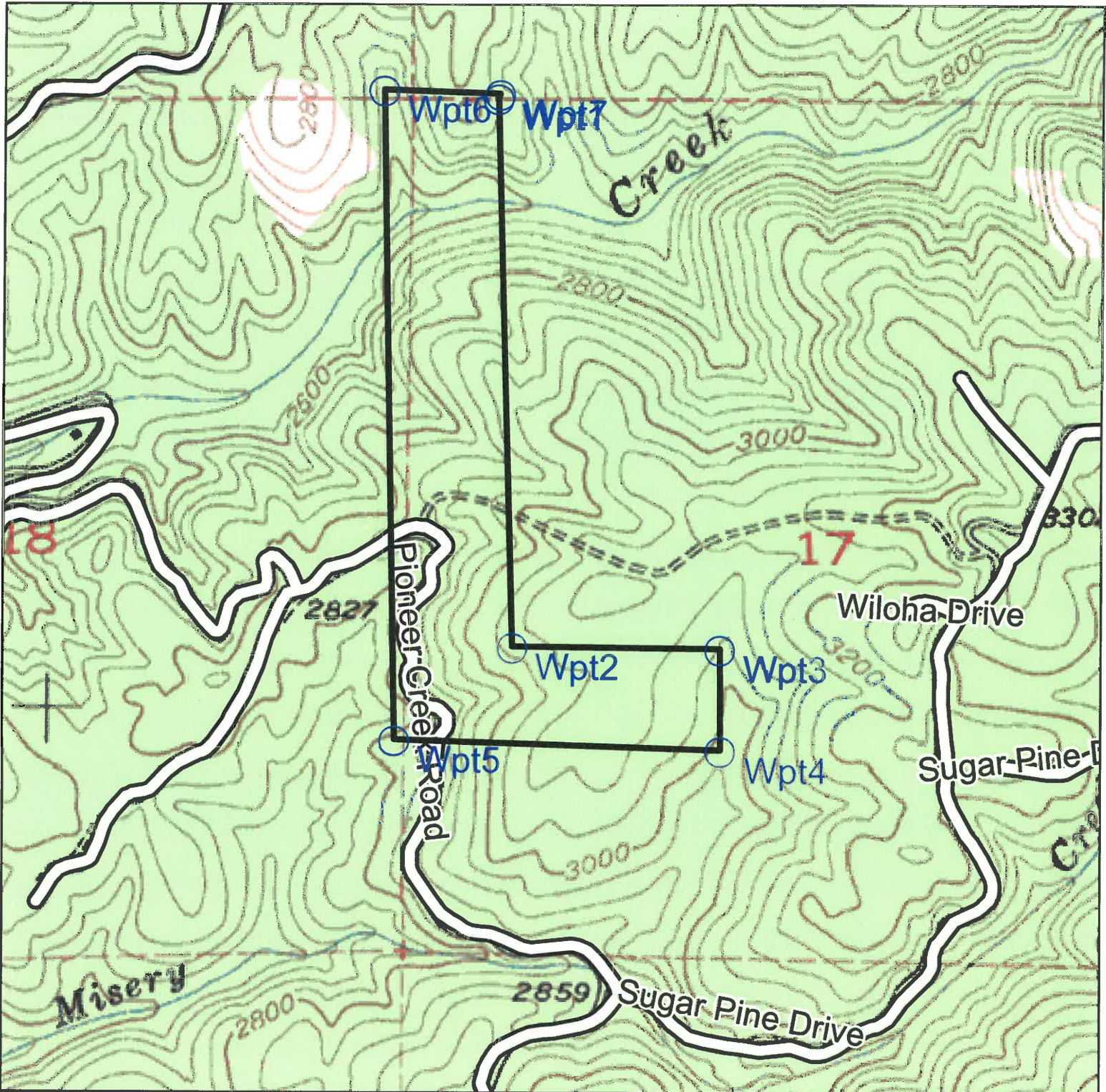
(AUKUM)



120° 35' 07.42" W

038° 28' 11.83" N +

TRI OUTDOOR PROPERTIES
2209 PLAZA DRIVE, SUITE 100 (OMO RANCH)
ROCKLIN, CA 95765
120° 33' 43.40" W
+ 038° 28' 11.83" N



The information and boundaries contained on this map are approximate and are for illustration purposes only. TRI Outdoor Properties makes no representations or warranties as to their use for any legal or title purposes

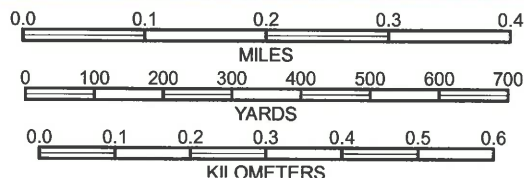
(MORE LUMPY TREE)

Produced by MyTopo Terrain Navigator
Topography based on USGS 1:24,000
Maps

North American 1983 Datum (NAD83)
Polyconic Projection

To place on the predicted North American
1927 move the projection lines 10M S and
91M W

GN 1.50° E
MN 13.63° E



CONTOUR INTERVAL 40 FEET
NATIONAL GEODETIC VERTICAL DATUM 1929

WEST POINT, CA
1948

(TALLER FLAT)